



Authorized commenting Agency for



KITCHENER  
WOODBRIDGE  
LONDON  
BARRIE  
BURLINGTON

January 18, 2023

A-2022-0396

Jeanie Myers  
Secretary-Treasurer  
Committee of Adjustment, City Clerk's Office

Brampton City Hall  
2 Wellington Street West  
Brampton, ON L6Y 4R2

Via email: [Jeanie.myers@brampton.ca](mailto:Jeanie.myers@brampton.ca)

Dear: Jean Myers

**RE: Minor Variance**  
**162 Luella Crescent**  
Indarjit & Kalouti Ramlagan (Owner); Kruti Shah (Agent)  
Your File: A-2022-0396  
Our File: PAR 50143

---

MacNaughton Hermsen Britton Clarkson (MHBC) are the planning consultants for TransCanada PipeLines Limited (TCPL). This letter is in response to a notification and request for comments for the minor variance application outlined above. We understand that the purpose of the proposed variances is to permit a reduced setback from TCPL's right-of-way to facilitate a below-grade entrance and a shed structure on the lands identified as 162 Luella Crescent (the "Subject Lands"). TCPL has two (2) high-pressure natural gas pipeline(s) contained within a right-of-way (easement) abutting the rear lot line of the Subject Lands.

TCPL's pipelines and related facilities are subject to the jurisdiction of the Canada Energy Regulator (CER) – formerly the National Energy Board (NEB). As such, certain activities must comply with the Canadian Energy Regulator Act ("Act") and associated Regulations. The Act and the Regulations noted can be accessed from the CER's website at [www.cer-rec.gc.ca](http://www.cer-rec.gc.ca).

As outlined in Zoning By-law 270-2004, the following setbacks apply to the Subject Lands:

*"1162.2(8) no permanent structures and excavations shall be located within 10.0 metres of the limit of the TransCanada Pipeline right-of-way;"*

The zoning regulations that provide minimum setbacks to TCPL's right-of-way are established as a public safety requirement and to ensure that access to the pipelines for maintenance and emergency service is maintained.

Upon review of the proposed reduced setbacks, due to the location of the pipeline within the right-of-way and the nature of the proposed development, **TCPL is in support of both variances**. The applicant shall apply for Written Consent from TCPL for the below-grade entrance (see instructions below) and adhere to the following regulatory requirements for any work within 30 metres of TCPL's right-of-way:

1. Written consent from TCPL must be obtained in Canada before any of the following:
  - Constructing or installing a facility across, on, along or under a TCPL pipeline right-of-way;
  - Conducting ground disturbance (excavation or digging) on or within the prescribed area (30 metres from the centerline of a pipeline);
  - Driving a vehicle, mobile equipment or machinery across a TCPL pipeline right-of-way outside the travelled portion of a highway or public road;
  - Using any explosives within 300 metres TCPL's right-of-way; and
  - Use of the prescribed area for storage purposes.

How to apply for written consent:

- Determine the location of your work relative to TCPL's facilities.
    - When planning, and before any of the work or activities, listed above, can begin, a request for written consent must be submitted to TCPL through our online application form
    - We no longer accept applications through email
    - Location of the work is required, along with the proximity to TCPL's rights-of-way
    - This information can be obtained through survey plans, or through a locate request
  - **Make a locate request** either online ([ClickBeforeYouDig.com](http://ClickBeforeYouDig.com)) or by calling your [local One-Call Centre](#).
    - The One-Call Centre will notify owners of buried utilities in your area, who will send representatives to mark these facilities with flags, paint or other marks, helping you avoid damaging them. Often written consent for minor activities can be obtained directly from a regional TC Energy representative through a locate request.
  - **Apply for written consent** using TCPL's online application form at <https://writtenconsent.tcenergy.com/> or call [1-877-872-5177](tel:1-877-872-5177).
  - **Application assessment and consent.** Once your information has been assessed and potential impacts have been evaluated, TCPL may:
    - Grant consent without any conditions
    - Grant consent that requires certain conditions to be met to assure safety, or
    - Not grant consent
2. During any construction activities in proximity of the right-of-way, the owner must install and maintain temporary fencing along the limits of TCPL's right-of-way to prevent unauthorized access onto the pipeline right-of-way with heavy equipment. The fence must meet TCPL's specifications concerning type, height and location and must be maintained by the owner for the duration of construction.
  3. Storage of materials and/or equipment on TCPL's right-of-way is not permitted.
  4. In the event that TCPL's pipelines suffer contact damage or other damage as a result of an Owner's operations, work shall stop immediately and TCPL shall be notified at once.
  5. The Owner shall ensure through all contracts entered into, that all contractors and subcontractors are aware of and observe the foregoing terms and conditions.

Enclosed is a copy of TC Energy's Work Safely Handbook for additional information on constructing near TCPL's pipelines.

Thank you for the opportunity to provide comments. Kindly forward a copy of Notice of Decision to [TCEnergy@mhbcolan.com](mailto:TCEnergy@mhbcolan.com). If you have any questions, please do not hesitate to contact our office.

Sincerely,

A handwritten signature in black ink that reads "K. Webber". The signature is written in a cursive, slightly slanted style.

Kaitlin Webber, MA  
Planner | MHBC Planning

*on behalf of TransCanada PipeLines Limited*

# Work safely.

## Development near our pipelines and facilities

These guidelines are intended to provide useful and timely safety information. TC Energy endeavors to ensure the information is as current and accurate as possible.

[TCEnergy.com](https://www.tchenery.com)



## About us

For over 65 years, TC Energy has proudly delivered the energy millions of North Americans rely on to power their lives and fuel industry.

Guided by our values of safety, responsibility, collaboration and integrity, our more than 7,000+ employees are deeply rooted in their communities and ensure that we develop and operate our facilities safely, reliably and with minimal impact on the environment. We are committed to listening to our neighbours and working with all our stakeholders to develop better project plans and create long-term opportunities and economic benefits in the communities where we operate across Canada, the U.S. and Mexico.

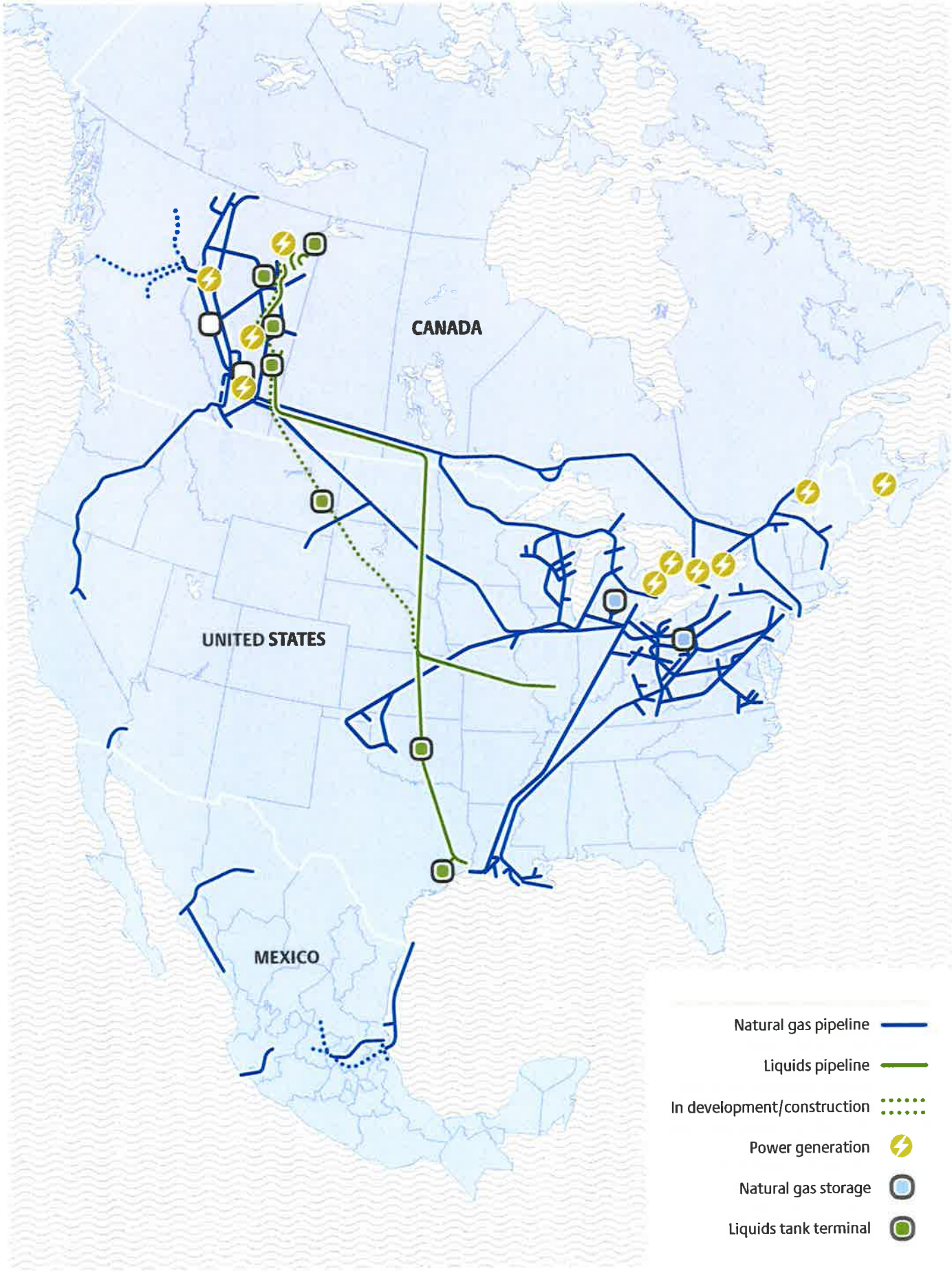
In May 2019, we changed our name from TransCanada to TC Energy to better reflect the scope of our operations and to reinforce our position as a leading North American energy infrastructure company. Whether our stakeholders know us as TC Energy in English, TC Énergie in French, or TC Energía in Spanish, our neighbours, partners and investors can continue to count on us to follow through on our commitments and live up to our values in everything we do.

## Our pipelines

Pipelines are the safest and most efficient method to transport natural gas and oil to market. Natural gas is odourless, colourless and will dissipate quickly when released because it is lighter than air. However, the gas is flammable and can be explosive if ignited. Crude oil is a liquid mixture of naturally occurring petroleum hydrocarbons and can possess a rotten egg, gasoline, tar or "skunk-like" odour. Crude oil vapours are volatile, and can be flammable and explosive.

Typically, TC Energy does not own the land where our pipelines are located, but instead acquires the right prior to construction to install and operate the pipeline and related facilities within a pipeline right-of-way through an easement or right-of-way agreement with the landowner. The terms of the right-of-way agreements vary but generally provide TC Energy with the right to access, construct, operate, maintain and abandon the pipeline within the right-of-way.

The width of the right-of-way is based on the size and type of the pipeline and related facilities. By contrast, TC Energy does typically own the land where both compressor stations, which re-pressurize gas along the pipeline to ensure the gas flows continuously at a desired flow rate, and pump stations, which pump oil through the pipeline from one point to the next, are located. The lands required for meter stations, which measure product volume, are either leased directly from landowners or owned by TC Energy.



## Regulatory requirements

TC Energy's pipeline design, construction and maintenance programs meet or exceed industry and government standards. In Canada, our operations are regulated by provincial and federal authorities including the Canada Energy Regulator (CER). Legislation and regulations set out the requirements governing activities in proximity and on pipeline rights-of-way, including vehicle and equipment crossings, construction of facilities on or near a right-of-way, and other activities that could cause ground disturbances, which might impact the pipeline. Such legislation and regulations aim to ensure the safety and protection of the public, our employees, the environment as well as our pipeline facilities and other property.

## Safety

At TC Energy, we seek to anticipate and minimize hazards of every description. From design and construction to operation and maintenance, safety is an integral part of everything we do. TC Energy regularly communicates pipeline safety information to stakeholders through our public awareness program.

Our safety practices include monitoring changes in land use near our pipeline facilities. This can involve meetings with landowners, municipal decision makers, administrative staff and land use planners.

TC Energy also has an extensive pipeline maintenance program that ensures our pipeline facilities are regularly monitored, inspected and repaired in order to meet or exceed best industry practices and regulatory requirements. Our entire pipeline transmission system is monitored from our control centres 24 hours a day, 7 days a week. In addition, TC Energy carries out the following activities as part of our pipeline maintenance program:

**Aerial patrols** – TC Energy carries out aerial patrols of the pipeline route to identify hazards from outside sources, including unauthorized construction and ground disturbances near the pipeline. Sensitive detection equipment may be used during these patrols to identify gas leaks.

**In-line pipeline inspections** – TC Energy conducts in-line pipeline inspections using tools that travel through the pipeline collecting data and looking for locations where corrosion, metal loss or dents may have occurred.

**Hydrostatic testing** – TC Energy uses hydrostatic testing, typically at the completion of pipeline construction, but to verify the safety of existing pipelines. Sections of the pipeline are filled with water and the pressure is increased beyond normal operating pressure to test pipeline strength and identify any pipeline leaks.

**Cathodic protection** – TC Energy uses cathodic protection, which involves applying a low-voltage electrical current to the metal pipe to protect the pipeline against corrosion. The cathodic protection system is monitored regularly to ensure proper protection against pipeline corrosion.

**Pipeline signage** – TC Energy installs pipeline signs at all road, rail, and waterbody crossings and at other strategic points along the pipeline route to identify the approximate location of our pipelines. Pipeline signs contain important information such as:

- The owner of the pipeline
- The product shipped in the pipeline
- Emergency contact numbers

**BE AWARE:** Pipeline signs will not designate the exact location, depth or number of pipelines in the area. Contact your local one-call centre and TC Energy will send a representative to the proposed excavation site to mark the pipeline.



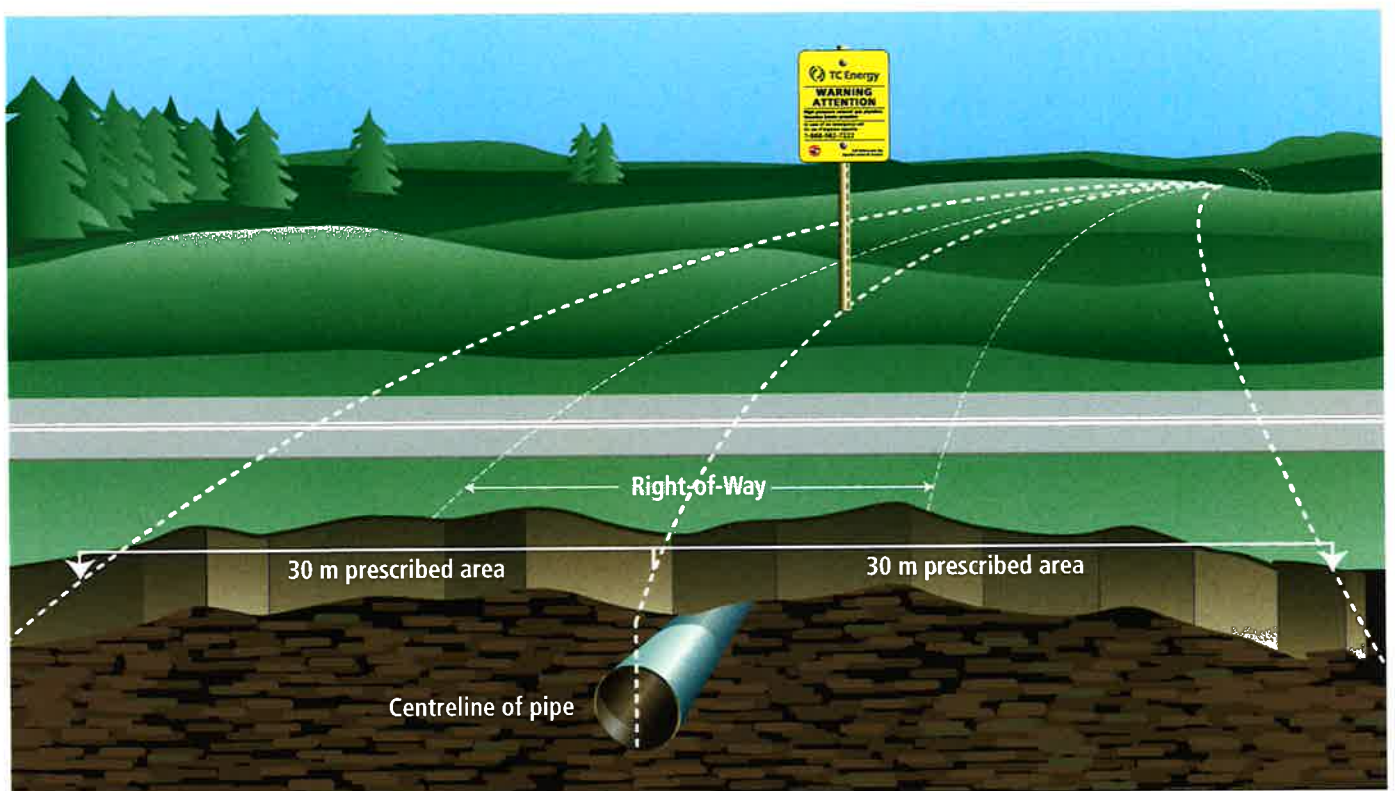
## Approvals for working around TC Energy's facilities

To ensure our pipelines and facilities operate safely, written consent from TC Energy must be obtained in Canada before any of the following:

- Constructing or installing a facility across, on, along or under a TC Energy pipeline right-of-way
- Conducting ground disturbance (excavation or digging) on or within the prescribed area (30 metres or 100 feet from the centreline of the pipeline)
- Driving a vehicle, mobile equipment or machinery across a TC Energy pipeline right-of-way outside the travelled portion of a highway or public road
- Using any explosives within 300 metres or 1,000 feet of TC Energy's pipeline right-of-way
- Use of the prescribed area for storage purposes

### The following are examples of ground disturbances:

- Digging
- Excavation
- Trenching
- Tunneling
- Boring/drilling/pushing
- Augering
- Topsoil stripping
- Land leveling/grading
- Plowing to install underground infrastructure
- Tree or shrub planting
- Cleaning and stump removal
- Subsoiling
- Blasting/using explosives
- Quarrying
- Grinding and milling of asphalt/concrete
- Seismic exploration
- Driving fence posts, bar, rods, pins, anchors or pilings
- In-ground swimming pools





## Locate request

Any person planning to construct a facility across, on, along or under a pipeline (including the right-of-way), conduct a ground disturbance activity within 30 metres of the centreline of a pipe, or operate a vehicle or mobile equipment across a right-of-way, must request a locate service.

Locate requests can be made online ([www.clickbeforeyoudig.com](http://www.clickbeforeyoudig.com)), via mobile apps (Saskatchewan and Quebec) or via phone (see the back of this booklet for more details). The locate request must be made at least three working days in advance of the ground disturbance, construction activity, or vehicle or mobile equipment crossing.

The One-Call Centre will notify TC Energy to send a representative to mark the facilities with flags, paint or other markings in order to help you avoid damaging them. The TC Energy representative will explain the significance of the markings and provide you with a copy of the locate report. The service is free and could prevent accidents, injuries or deaths.

## Written consent

After you apply for written consent, TC Energy will assess the planned work to ensure it does not pose a risk of damage to the pipeline and to ensure that access to the pipeline for maintenance or emergency purposes is not impeded.

Obstacles on a right-of-way, such as sheds, trailers, boats, garbage and vegetation can interfere with TC Energy's pipeline maintenance program (detailed in safety section above). In some cases, TC Energy may require additional time to assess the situation prior to providing consent.

### **In review, prior to commencing any activities in proximity to the pipeline, you must:**

- Make a locate request
- Obtain TC Energy's written consent (apply online at [writtenconsent.transcanada.com](http://writtenconsent.transcanada.com) or call 1-877-872-5177). Often written consent for minor activities can be obtained directly from regional TC Energy representative through a locate request.
- Obtain TC Energy's safety practices to be followed while working in the vicinity of its pipes or prescribed area and information that clearly explains the significance of the locate markings.

## Mobile equipment and vehicle crossings

The operation of a vehicle or mobile equipment across a TC Energy right-of-way requires TC Energy's written consent, except in the following circumstances:

- Vehicle or mobile equipment is operating within the travelled portion of a highway or public road across the right-of-way
- Vehicle and mobile equipment is being used to perform an agricultural activity and the following conditions are being met:
  1. The loaded axle weight and tire pressures of the vehicle is being operated within the manufacturer's approved limits and operating guidelines; and
  2. The point of crossing has not been identified by TC Energy as a location where a crossing could impair the pipeline's safety or security

## Agricultural activities

Agricultural activity involves the work of producing crops and raising livestock and includes tillage, plowing, disking, harrowing, and pasturing but does not include the construction of new buildings or the placement of footings, foundations, pilings or posts.

The following agricultural activities do not require written consent from TC Energy:

- Cultivation activities (e.g. tillage, plowing, disking and harrowing) to a depth of less than 45 centimetres, as these activities are exempt from the applicable statutory definitions of a ground disturbance (See the Approvals for Working Around TC Energy's Facilities section).
- Agricultural vehicle and mobile equipment crossings as described in the mobile equipment and vehicle crossings section above.



Warning sign



Warning sign



Vent marker



Aerial marker

## Development on or near the pipeline right-of-way

It is important for municipal authorities, developers and landowners to consult with TC Energy early in the planning stage of a development project on or near a right-of-way to ensure that TC Energy's pipelines and facilities are appropriately incorporated into the plan and that any new development near our facilities meets regulatory and TC Energy requirements.

Contact TC Energy before developing within 750 metres of TC Energy compressor stations and pump stations so that we can analyze potential impacts and recommend measures to protect adjacent lands from industrial impacts.

TC Energy requires significant advance notice for any development which increases the population density within approximately 200 metres of a pipeline. Population growth means potential changes to the operating requirements of the pipeline, and could result in a revision to operating pressure, a pipeline replacement, and/or other mitigation actions as necessary. Failure to consult with TC Energy in advance may result in significant delays and costs to the development. during these patrols to identify gas leaks.

Municipalities often prescribe minimum setback distances to restrict the building of a structure within a prescribed distance from a curb, property line, right-of-way or structure. These setbacks can help to minimize the risk of damage to buried infrastructure. As municipal setback requirements vary, contact the local authority and TC Energy to determine the requirements in your area.

**Any ground disturbance within 30 metres of the centerline of the pipe, construction of a facility across, on, along or under a pipeline (including the right-of-way), or vehicle or mobile equipment crossing the pipeline right-of-way may not occur without TC Energy's written consent.**

For detailed guidelines about applying for written consent from TC Energy, visit [writtenconsent.transcanada.com](https://www.transcanada.com/writtenconsent) or call **1-877-872-5177**. A copy of the guidelines can also be provided upon request.

The following must be taken into consideration when planning a development project.

**Subdivisions** – Contact TC Energy early in the design process so that we can comment on the proposed subdivision plans. TC Energy's practice is that our right-of-way be used as a passive green space or as part of a linear park system. Permanent structures on the right-of-way are not permissible.

**Roads and Utilities** – Contact TC Energy when designing roads and utilities. Roads may be permitted to cross and/or run parallel to the right-of-way, but no portion of a road allowance can be located on the right-of-way (apart from approved road crossings). TC Energy will also review the location of utilities, which are often proposed to be installed within road allowances.

**Blasting** – Contact TC Energy before conducting any blasting activities within 300 metres of the pipeline right-of-way so TC Energy can review your plans for potential impacts to its facilities. Blasting activities related to prospecting for mines and minerals within 40 metres of a federally regulated pipeline right-of-way require permission from the CER.

**Landscaping** – Contact TC Energy for written consent before landscaping. Projects such as pedestrian pathways and the planting of trees and shrubs may be permitted as long as they do not impede TC Energy's access along its right-of-way for operational or maintenance activities. Our written consent will specify the permitted landscaping requirements.

## Important contact information

### Canadian One-Call centres

British Columbia . . . . . 1-800-474-6886  
Alberta . . . . . 1-800-242-3447  
Saskatchewan . . . . . 1-866-828-4888  
Manitoba . . . . . 1-800-940-3447  
Ontario . . . . . 1-800-400-2255  
Quebec . . . . . 1-800-663-9228  
[www.clickbeforeyoudig.com](http://www.clickbeforeyoudig.com)

### Mobile phone apps

Saskatchewan . . . . . Sask1st Call  
Quebec . . . . . Info-Excavation  
Emergency . . . . . 1-888-982-7222

### General inquiries

Phone . . . . . 1-855-458-6715  
Email . . . . . [public\\_awareness@tcenergy.com](mailto:public_awareness@tcenergy.com)

### Landowner inquiries

Phone . . . . . 1-866-372-1601  
Email . . . . . [cdn\\_landowner\\_help@tcenergy.com](mailto:cdn_landowner_help@tcenergy.com)

### Applying for written consent

Online . . . . . [writtenconsent.transcanada.com](http://writtenconsent.transcanada.com)  
Phone . . . . . 1-877-872-5177

### Crossings inquiries

Email . . . . . [crossings@tcenergy.com](mailto:crossings@tcenergy.com)  
Quebec email . . . . . [quebec\\_crossings@tcenergy.com](mailto:quebec_crossings@tcenergy.com)

The majority of TC Energy's pipelines are regulated by the Canada Energy Regulator in Canada, with some pipelines regulated provincially. For more information on CER-regulated pipelines, visit [www.cer-rec.gc.ca](http://www.cer-rec.gc.ca).

