

A-2022-0158



**URBANTRANS**  
Engineering Solutions Inc.

Parking Justification Study

## Existing Commercial Development

26 Bramsteele Road  
City of Brampton, ON

UT-22-076

January 17, 2023



**URBANTRANS**  
Engineering Solutions Inc.

January 17, 2023

2466482 Ontario Inc.  
C/O Glen Schnarr & Associates  
700-10 Kingsbridge Garden Circle  
Mississauga ON L5R 3K6

UrbanTrans Engineering Solutions Inc.  
9275 Markham Road, Suite 146  
Markham ON L6E 0H9  
Tel: 437-236-7085  
annosan@uteng.ca

**RE: Parking Justification Study  
Existing Commercial Development  
26 Bramsteele Road, City of Brampton  
Reference No.: UT-22-076**

UrbanTrans Engineering Solutions Inc. was retained by 2466482 Ontario Inc. (the "Client") to complete this Parking Justification Study in support of a Minor Variance application. The proposed development is located at the northeast corner of Bramsteele Road and Hale Road intersection municipally known as 26 Bramsteele Road, in the City of Brampton.

The subject lands currently provide a one-storey commercial building comprising of a motor vehicle sales, auto repair shop and a restaurant with approximately 365 square metres, 353 square metres and 250 square metres of gross floor area (GFA), respectively. A total of 39 parking spaces are provided on site including six (6) tandem parking spaces. Based on discussion with the client, the purpose of the minor variance application is to renew the existing commercial uses that were temporarily permitted.

The Parking Justification Study concludes that the existing parking supply of 39 parking spaces including six (6) tandem parking spaces is reasonable and justified based on the justifications provided in this Study. It is understood that the City of Brampton is the Municipal authority to review and approve the Parking Justification Study for the proposed development.

We trust the enclosed comply with your requirements. Should you have any questions, please do not hesitate to contact the undersigned.

Kind Regards,  
**UrbanTrans Engineering Solutions Inc.**

Signature

Annosan Srikantha, P.Eng.  
President



Engineer's Seal

## DISCLAIMER

This document entitled '26 Bramsteele Road - Parking Justification Study' or named part thereof (the "project") was prepared by UrbanTrans Engineering Solutions Inc. ("UrbanTrans") for the account of 2466482 Ontario Inc. (the "Client"). This document is confidential and prepared solely for approval and commenting municipalities and their agencies in their review and approval of this project. The materials in this report reflect the best judgement based on the information available at the time the document was issued. Any reliance on this document by any third party is strictly prohibited and UrbanTrans accepts no responsibility for damages, if any, suffered by any third party by reason of decisions made or actions based on this document.

## RECORD OF REVISIONS

Revision	Date	Identification	Description
0	January 17, 2023	Final Report	Final Submission

## TABLE OF CONTENTS

1.0	INTRODUCTION .....	1
1.1	Background .....	1
1.2	Objective .....	1
1.3	Development Proposal .....	1
2.0	EXISTING CONDITIONS .....	3
2.1	Road Network .....	3
2.2	Transit Network .....	4
2.3	Active Transportation Network .....	5
2.3.1	Sidewalk Network .....	5
2.3.2	Bicycle Network .....	6
3.0	TRANSPORATION DEMAND MANAGEMENT (TDM) .....	7
3.1	Smart Commute .....	7
3.2	TDM Implementation .....	8
4.0	Transportation Planning Context in the Area .....	9
4.1	City of Brampton Official Plan (September 2020) .....	9
5.0	PARKING REQUIREMENT .....	10
5.1	Zoning By-law Review .....	10
5.2	ITE Parking Generation Manual 5 <sup>th</sup> Edition .....	10
5.3	Parking Utilization Survey .....	12

## **LIST OF TABLES**

- Table 1: Existing Building Occupancies
- Table 2: Area Transit Context
- Table 3: TDM/ AT Recommendations
- Table 4: ITE Parking Generation 5<sup>th</sup> Editions (Land Use Average Peak Parking Demand)
- Table 5: ITE Parking Generation 5<sup>th</sup> Editions (Time of Day Distribution Average Peak Parking Demand)
- Table 6: Parking Utilization Survey – 26 Bramsteele Road, City of Richmond Hill

## **LIST OF FIGURES**

- Figure 1 - Site Location
- Figure 2 – Existing Site Plan
- Figure 3 – Brampton Transit System Map
- Figure 4 – Transit Route Frequency Guide
- Figure 5 – City of Brampton Cycling Map

## **LIST OF APPENDICES**

- Appendix A: Existing Site Plan
- Appendix B: Existing Transit Routes
- Appendix C: 2016 TTS Data (City of Brampton, Ward 3)

## **1.0 INTRODUCTION**

### **1.1 Background**

UrbanTrans Engineering Solutions Inc. was retained by 2466482 Ontario Inc. (the “Client”) to complete this Parking Justification Study in support of a Minor Variance application.

### **1.2 Objective**

The study will assess the following components:

- Determine whether the existing shared commercial uses vehicle parking supply can sufficiently accommodate the peak parking demands of the existing commercial uses within the existing buildings.
- Undertake parking utilization surveys at the subject site to derive existing peak parking demands for the site. Furthermore, UrbanTrans will recommend reduced parking rates and identify alternative strategies that can sufficiently accommodate the peak parking demand/requirement of the proposed development (if applicable).

### **1.3 Development Proposal**

The proposed development is located at the northeast corner of Bramsteele Road and Hale Road intersection municipally known as 26 Bramsteele Road, in the City of Brampton.

The subject lands currently provide a one-storey commercial building comprising of a motor vehicle sales, auto repair shop and a restaurant with approximately 365 square metres, 353 square metres and 250 square metres of gross floor area (GFA), respectively. A total of 39 parking spaces are provided on site including six (6) tandem parking spaces. Based on discussion with the client, the purpose of the minor variance application is to renew the existing commercial uses that were temporarily permitted.

The location of the proposed development is illustrated in **Figure 1**. The existing site plan is illustrated in **Figure 2**; **Appendix A** also provides a larger scale version of the existing site plan.

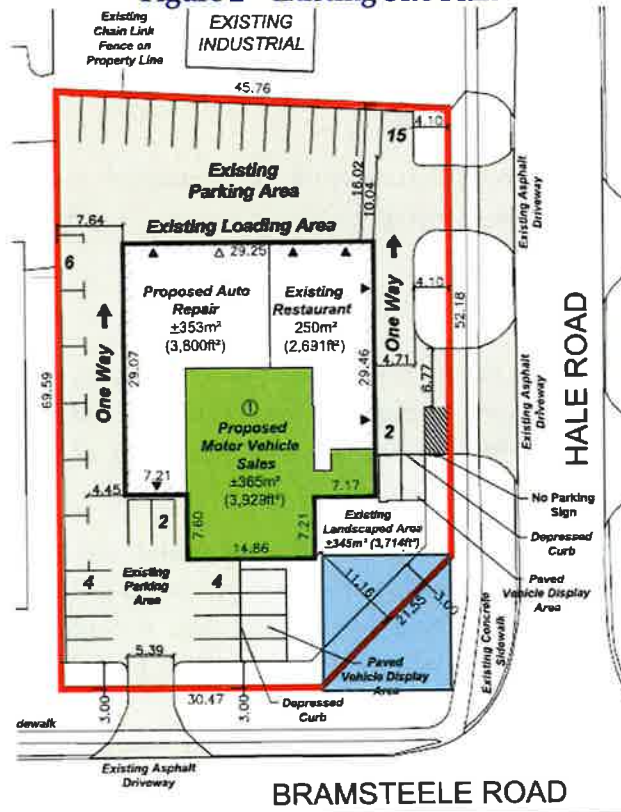


**Figure 1 - Site Location**



Source: Google Map

**Figure 2 - Existing Site Plan**



Source: Glen Schnarr & Associates Inc.

Table 1 details the existing tenant site operations and GFA.

**Table 1: Existing Building Occupancies**

Land Use	Tenant	GFA (sq.m.)	Hours of Operation
Auto Repair Shop	Collision Linx	353	Monday to Friday (9am-5pm)
			Saturday (10am-2pm)
			Sunday (Closed)
Motor Vehicle Sales Shop	ACEZ Auto Sales	365	Monday to Saturday (8:30am-7pm)
			Sunday (10am-1pm)
Restaurant	Steel Bar & Grill	250	Sunday to Wednesday (12pm-7pm)
			Thursday (12pm-11pm)
			Friday & Saturday (12pm-1am)

## 2.0 EXISTING CONDITIONS

This section documents the transportation network in the study area in 2023, including existing roadways, transit services, active transportation network, traffic control measures, and intersection performances.

### 2.1 Road Network

To provide clarity throughout this report, Rutherford Road South and Hale Road have been given a north-south orientation, and Steeles Avenue East and Bramsteele Road have been given an east-west orientation. On this basis, the characteristics of the roads and intersections within the vicinity of the subject site are described below:

- **Rutherford Road South** is a minor arterial road under the jurisdiction of the City of Brampton. It operates as a 4-lane cross section with exclusive left and right turn lanes at the signalized Steeles Avenue East intersection and exclusive left turn lanes at the signalized Bramsteele Road intersection. Rutherford Road South maintains a posted speed limit of 60 km/hr.
- **Steeles Avenue East** is a major arterial road under the jurisdiction of the Region of Peel. It operates as a 4-lane cross-section with exclusive left and right turn lanes at the signalized



Rutherford Road South intersection. Steeles Avenue East maintains a posted speed limit of 70 km/hr.

- **Bramsteele Road** is a local road under the jurisdiction of the City of Brampton. It operates as a 2-lane cross-section with exclusive left turn lanes at the signalized Rutherford Road South intersection. Bramsteele Road maintains an unposted speed limit of 50 km/hr.
- **Hale Road** is a local road under the jurisdiction of the City of Brampton. It operates as a 2-lane cross-section and maintains an unposted speed limit of 60 km/hr.

## 2.2 Transit Network

The proposed subject site is situated within an area that is currently well serviced by the existing Brampton transit network and GO Transit. Brampton Transit Bus stops are located right at the site intersection of Bramsteele Road & Hale Road. The transit routes are provided in **Appendix B** and the route services in the vicinity of the subject site are summarized in **Table 2**. The existing Brampton Transit System Map and Transit Frequency Schedule by the vicinity of the subject site are illustrated in **Figure 3** and **Figure 4**, respectively.

**Table 2: Area Transit Context**

Bus Route	Route Description	Frequency
<b>511/ 511A Züm Steeles (East of Brampton Gateway Terminal)</b>	Operates in a mostly east-west direction between Lisgar GO Station, Mississauga to Humber College Terminal, Toronto. The 511/511A bus operates from Monday to Sunday.	See Figure 4
<b>511C Züm Steeles (East of Brampton Gateway Terminal)</b>	Operates in a mostly east-west direction between Lisgar GO Station, Mississauga to Humber College Terminal, Toronto. The 511C bus operates from Monday to Friday, no evening service.	
<b>7/7A Kennedy</b>	Operates in a mostly north-south direction between Hurontario Street @ Courtenypark Drive, Mississauga to Hurontario Street south of Mayfield Road, Brampton. The 7 Kennedy bus operates Monday to Sunday, and the 7A operates from Monday to Saturday.	
<b>10 South Industrial</b>	Operates in a north-south direction with service between Kennedy Road north of First Gulf Boulevard to Bramalea Terminal, Brampton. The 10 Industrial South bus operates from Monday to Friday, no evening service.	
<b>11/11A Steeles</b>	Operates in an east-west direction between Lisgar GO Station, Mississauga to Humber College Terminal, Toronto. The 11/11A Steeles bus operates from Monday to Sunday.	
<b>Kitchener GO Train Line</b>	Operates in an east-west direction between Downtown Kitchener to Union Station, Toronto. The Kitchener Go train line operates from Monday to Friday from 4:30 am to 10:00 pm.	30 minutes



### 2.3.2 Bicycle Network

Currently, cycling routes do not exist within the general area of the proposed development, as seen in **Figure 5**. However, in general, cyclists will have to share the road with automobile traffic. This is an area of improvement that the Region of Peel and the City of Brampton should fast track. This provision will facilitate and encourage new residents and employees to take alternative and sustainable modes of transportation to work, school, shopping, or other discretionary trips during the peak periods.

**Figure 5: City of Brampton Cycling Map**



Source: Brampton Cycling Map

Based on the above, it is UrbanTrans' opinion that the area surrounding the proposed development is well served by existing active transportation, including walking, cycling, and transit. The existing and future network will continue to reduce the demand of single occupancy vehicular use.

### 3.0 TRANSPORTATION DEMAND MANAGEMENT (TDM)

Transportation Demand Management (TDM) Plan discusses measures to reduce congestion, minimize the number of single-occupant vehicle and encourage non-auto modes of travel such as walking, cycling and transit as well as ridesharing. TDM plans consist of specialized policies, targeted plans, innovative mobility services and products that encourage people to use sustainable modes of transportation, rather than driving alone, or make fewer trips by car.

TDM strategies have multiple benefits including reduce auto-related emissions to improve air quality, decreased traffic congestion to reduce travel time, increased travel options, reduce personal transportation costs and energy consumption and support Provincial smart growth objectives.

The primary objective of this TDM plan are as follows:

- Provision of facilities/operations to promote behavioural change for reduced automobile uses and encourage the use of alternative sustainable transportation modes aside from single-occupancy vehicle (SOV).
- Maximize average auto occupancies, with the intent of a net minimization of site-related auto trips.
- Create and support opportunities for an inclusive transportation system to accommodate and facilitate all potential road uses in a safe and efficient manner.

#### 3.1 Smart Commute

In accordance with UrbanTrans review of the 2016 Transportation Tomorrow Survey Data Ward 3, in the City of Brampton provided in **Appendix C**, it is suggested that there is a considerable number of trips made by residents in Ward 3 and trips made to Ward 3 that are passenger (carpool), and active transportation with approximately 35% and 30%, respectively.

The Smart Commute Brampton-Caledon are non-profit Transportation Management Associations (TMAs) that promote commuter options and transportation services to employers as well as promoting sustainable transportation which are ways of travelling between places with little or no effect on the environment. The Smart Commute aims to reduce traffic and fight climate change by encouraging people to use more environmentally friendly ways of travelling in and around Brampton and Caledon. Furthermore, Smart Commute works with employers to provide easier, less stressful ways for employees to get to and from work. Smart Commute offers employers:

- Site assessments and surveys to understand employee commute behaviour.
- Customized action plans to encourage employees to explore and try out smart travel options including exclusive carpool ride-matching programs, emergency ride home programs, discounted transit pass programs, walking and cycling programs.
- Executing employee trip reduction programs at local workplaces.
- Reduce traffic congestion and improve air quality and health by reducing vehicle emissions.



- Enhance employee efficiency and confidence, and reduce employee turnover
- Support for improved transit service, and increased local transportation infrastructure
- Bus-only and cycling lanes, and a wider network of subway and light rapid transit.
- Encourage the benefits of transit-supportive development and smart-growth strategies
- Promote legislative flexibility in support of high value, cost effective transportation strategies such as vanpools, telework, transit subsidies and shuttle services; and,
- Increase opportunities for TMA collaboration with business and government

Smart Commute offers one-on-one support for staff to use sustainable modes and provides promotions and incentives on an on-going basis. A web-based car matching tool is provided to allow carpoolers to easily identify ride matching options among a large membership base and form carpooling arrangements. It is recommended the Owner enrolls in the Smart Commute program as the benefits of this program include the following:

**Employer/Property Owners & Managers Benefits:**

- A more attractive workplace for potential recruits
- Better employee retention
- Increased employee productivity
- Less employees will need to park on-site

**Employee Benefits:**

- Reduced commuting time and costs
- Increased job satisfaction
- Improved health and safety

**Community Benefits:**

- Less cars on the roads
- Less need to build or widen roads
- Cleaner air
- Better health

### **3.2 TDM Implementation**

Based on our experience, excessive parking supply imposes environmental costs, contradicts community development objects for more livable and walkable communities, and tends to increase driving and discourage the use of alternative mode of travel. It is anticipated that the combination of reduced parking supply and an efficient public transit system will encourage the use of alternative modes of travel.

Sustainable Transportation Strategy recognizes and identifies Region of Peel's role to build awareness relating to sustainable modes of commuting. Travel Demand Management / Active Transportation Design recommendations have a vital role in the design of urban environments and its influence on travel choices. The Region of Peel - Sustainable Transportation and Strategic Initiatives (STSI) aim to achieve outcomes by integrating TDM/AT and development to provide

more attractive streetscapes that are inclusive and inviting for everyone: motorists, pedestrians, and cyclists; and promotes a healthy and active lifestyle.

Based on our review of the context of the proposed development in relation to the Regions' TDM/AT recommendations, **Table 3** details TDM measures and incentives recommended for the proposed development.

**Table 3: TDM/AT Recommendations**

Category	Transportation Mobility Plan Guidelines	Recommended Actions	Responsibility
<b>Transit Incentives &amp; Parking</b>	- To reduce the number of parking spaces, it is recommended that development provides PRESTO Transit cards with discounted pricing as an incentive to staff to use transit rather than vehicle travel.	<ul style="list-style-type: none"> <li>- It is recommended the applicant provide a one-time monthly Presto Card with value of \$25 each to be provided for 25% of employees.</li> <li>- The applicant shall coordinate with Region of Peel and City of Brampton to deliver and promote the Transit Incentive information packages and programs to employees. The information packages include Brampton Transit and GO maps and schedules, community and cycling maps, where appropriate.</li> <li>- The applicant enrolls in the Smart Commute Program and provides Smart Commute information to the employees.</li> </ul>	-Applicant

## 4.0 Transportation Planning Context in the Area

### 4.1 City of Brampton Official Plan (September 2020)

The City of Brampton Official Plan provides direction for the next stage of the Cities growth and provides a vision for a future Brampton through specific guidance for both the public and private sectors. The most recent office consolidation of Brampton's Official Plan was updated September 2020.

The Official Plan indicates that: *"In order to provide for more sustainable transportation practices in the future, Brampton must find ways and design policies to assist in reducing the number and length of automobile trips, by accommodating and encouraging increased transit ridership, by encouraging active transportation such as cycling and walking, by increasing car occupancy (i.e. carrying passengers, carpooling, etc.). This Plan endeavours to increase the modal share of transit and alternative modes by improving the features – passenger and pedestrian amenities, routes, operating speeds, interregional connections, multi-use paths – that make transit and other transportation alternatives convenient,*



*attractive and reliable. Streets will be designed to be complete streets; their design and operation will provide for the needs of all users, including pedestrians, bicyclists and transit passengers of all ages and abilities, as well as trucks, buses and automobiles.”*

Based on our review of the Official Plan Transportation Policies and directions, the City indicates that there is a desire to steer development towards a transit-oriented transportation network. This will have the effect to reduce single-occupant-vehicle trips and to support other modes of transportation such as public transit and active transportation.

## **5.0 PARKING REQUIREMENT**

### **5.1 Zoning By-law Review**

As previously mentioned, the subject lands currently provide a one-storey commercial building comprising of a restaurant, auto repair shop and a motor vehicle sales with approximately 250 square metres, 353 square metres and 365 square metres of gross floor area (GFA), respectively. A total of 39 parking spaces are provided on site including six (6) tandem parking spaces.

The City of Brampton’s Zoning By-law No. 270-2004 is applied to the proposed commercial development. The subject lands are designated M2 – SECTION 3237 on Sheet 61 of Schedule A to this by-law which specifies a minimum of 50 parking spaces shall be provided on the site.

Based on the applicable Zoning By-law, the proposed development is required to provide 50 vehicle parking spaces. The proposed development will provide a total of 39 parking spaces including six (6) tandem parking spaces resulting in a parking deficiency of 11 spaces.

As previously mentioned, based on our review of the City of Brampton’s Official Plan, policies and directions indicate that there is a need to reduce automobile trips by managing parking in the City to reduce single-occupant vehicle trips and to steer development towards a transit-oriented transportation network.

### **5.2 ITE Parking Generation Manual 5<sup>th</sup> Edition**

The Parking Generation Manual 5<sup>th</sup> Edition (January 2019) published by the Institute of Transportation Engineers (ITE) is an educational tool for planners, transportation professionals, zoning boards, and others who are interested in estimating parking demand of a proposed development. For the purposes of this assessment, **Table 4** calculates the existing Land Use’s average peak period parking demand per 1000 sq.ft GFA. The calculated peak parking demands for each land use summarized in Table 4 was multiplied by the time-of-day distribution fractions for their respective ITE Land Use Code to get the hourly land use parking demands over the course of a typical weekday at study sites in a general urban/suburban setting. The land use hourly parking demands were added together to calculate the total onsite parking demand estimates over the course of a typical weekday and is summarized in **Table 5**.

**Table 4: ITE Parking Generation 5<sup>th</sup> Edition  
(Land Use Average Peak Parking Demand)**

Land Use	GFA (sq.ft.)	Average Parking Rates	Parking Requirement
<b>Automobile Sale (Used) Land Use (841)</b>	3,928.83	3.08 parking spaces / 1000 sq.ft. GFA	12
<b>Automobile Parts and Service Centre Land Use (943)</b>	3,799.66	1.69 parking spaces / 1000 sq.ft. GFA	6
<b>High Turnover (Sit-Down) Restaurant Land Use (932)</b>	2,690.98	3.08 parking spaces / 1000 sq.ft. GFA	25

**Table 5: ITE Parking Generation 5<sup>th</sup> Edition  
(Time of Day Distribution Average Peak Parking Demand)**

Time	Automobile Sales (Used) LUC 841		Automobile Parts and Service Centre LUC 943		High Turnover (Sit-Down) Restaurant LUC 932		Total On-site Parking Demand
	% of Weekday Parking Demand	Vehicle Parking Demand	% of Weekday Parking Demand	Vehicle Parking Demand	% of Weekday Parking Demand	Vehicle Parking Demand	Vehicle Parking Demand
8:00 AM	14%	2	45%	3	0%	0	5
9:00 AM	44%	5	84%	5	0%	0	10
10:00 AM	69%	8	97%	6	9%	2	16
11:00 AM	90%	11	100%	6	15%	4	21
12:00 PM	79%	9	87%	5	100%	25	39
1:00 PM	79%	9	81%	5	81%	20	34
2:00 PM	75%	9	87%	5	54%	14	28
3:00 PM	92%	11	91%	5	33%	8	24
4:00 PM	94%	11	86%	5	26%	7	23
5:00 PM	100%	12	71%	4	29%	7	23
6:00 PM	63%	8	23%	1	58%	15	24
7:00 PM	32%	4	6%	0	70%	18	22
8:00 PM	13%	2	0%	0	77%	19	21
9:00 PM	0%	0	0%	0	61%	15	15
10:00 PM	0%	0	0%	0	41%	10	10
<b>Total Parking Required</b>							<b>39</b>
<b>Total Parking Demand</b>							<b>39</b>
<b>Difference</b>							<b>0</b>

Based on the recommended parking rates outlined in the ITE Parking Generation Manual 5<sup>th</sup> Edition detailed in Table 5, the proposed development is required to provide 39 vehicle parking spaces. The proposed development will provide a total of 39 vehicle parking spaces, thereby meeting the parking requirement based on the recommended ITE parking rates.

### 5.3 Parking Utilization Survey

As previously mentioned, a total of 39 parking spaces are provided on site including six (6) tandem parking spaces which falls short of the Zoning By-law requirement of a minimum of 50 parking spaces.

As requested by City Staff, to determine the existing peak parking demands at 26 Bramsteele Road, parking utilization surveys were conducted on a typical weekday and weekend during the operating hours of the proposed development. The survey time periods selected to capture the expected peak periods of the combined site land uses were based on the ITE Parking Generation forecast detailed in Table 5. On this basis, parking utilization surveys were conducted by UrbanTrans Engineering on the following days in 30-minute intervals:

- Thursday, January 12, 2023, between 11:00 AM to 5:00 PM
- Saturday, January 14, 2023, between 8:30 AM to 5:00 PM

Table 6 details the existing peak parking demands at the subject site on a typical weekday and weekend.

**Table 6: Parking Utilization Survey (26 Bramsteele Road, City of Brampton)**

Time Period (Starting)	Thursday, January 12, 2023			Saturday, January 14, 2023		
	Total Demand	Utilization Rate	Available Spaces	Total Demand	Utilization Rate	Available Spaces
<b>Supply</b>	<b>39 Spaces</b>					
11:00 AM	33	85%	6	29	74%	10
11:30 AM	34	87%	5	30	77%	9
12:00 PM	34	87%	5	30	77%	9
12:30 PM	29	74%	10	30	77%	9
1:00 PM	29	74%	10	30	77%	9
1:30 PM	30	77%	9	30	77%	9
2:00 PM	30	77%	9	30	77%	9
2:30 PM	33	85%	6	30	77%	9
3:00 PM	33	85%	6	30	77%	9
3:30 PM	33	85%	6	30	77%	9
4:00 PM	33	85%	6	27	69%	12
4:30 PM	28	72%	11	25	64%	14
5:00 PM	27	69%	12	24	61%	15
<b>Max Demand</b>	<b>34</b>			<b>30</b>		
<b>Max Utilization</b>	<b>87%</b>			<b>77%</b>		

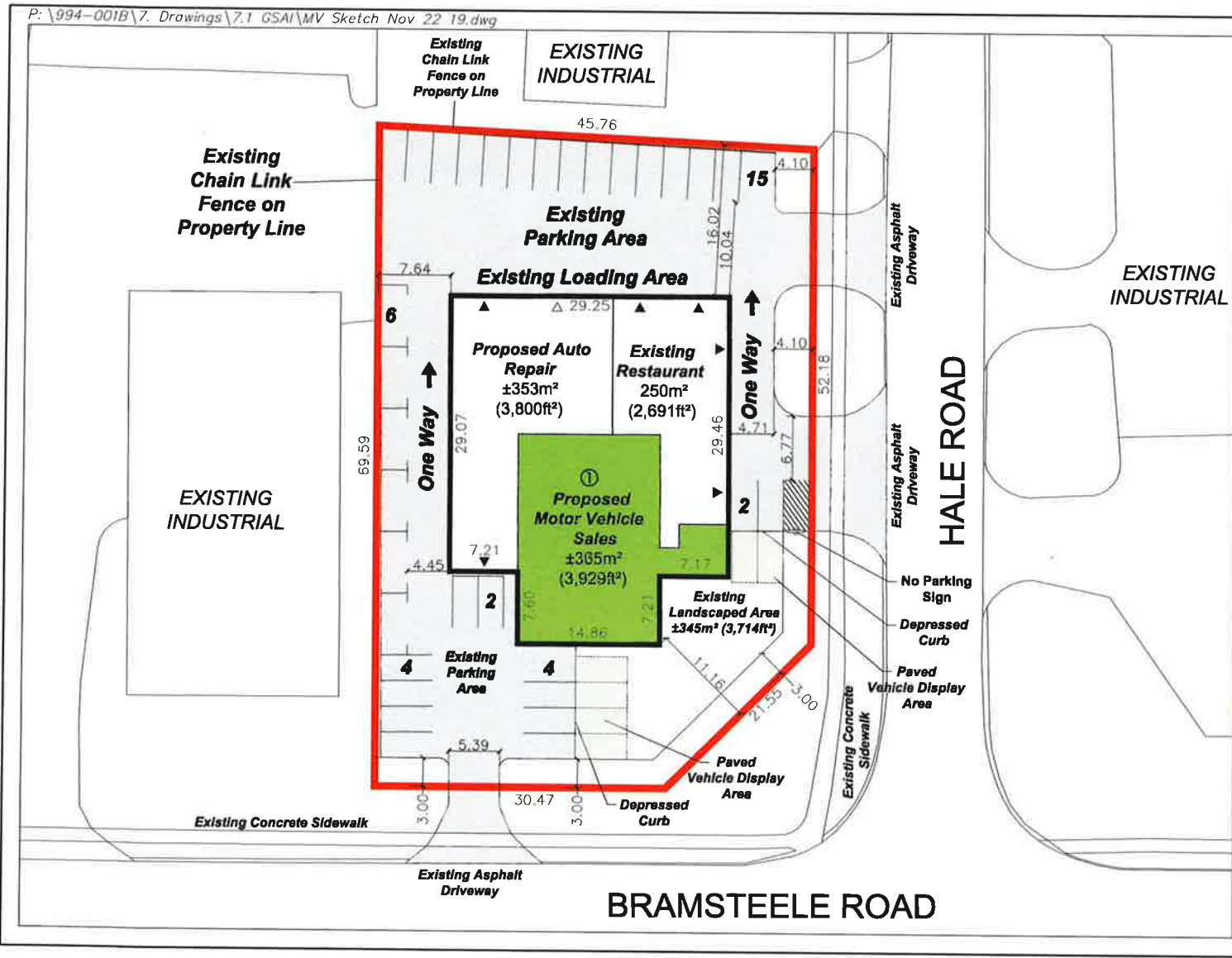
As shown from the parking utilization survey results above, of the 39 parking spaces made available at 26 Bramsteele Road, a peak parking demand of 34 and 30 parking spaces (or approximately 87% and 77%) were utilized during the highest peak parking demands over the course of two survey days. As such, a total of five (5) parking spaces are technically always made available during the expected peak periods.

**It is UrbanTrans' opinion that the minimum of 50 parking spaces based on the Zoning By-law is overly conservative. Furthermore, parking management is the best TDM measure to encourage employees to walk and cycle to and from the proposed development. The City continues to evolve into an increasingly urban environment with more pervasive and frequent public transportation and has recognized the need to review its parking standards. High minimum parking requirements contribute to an oversupply of parking, inefficient use of land, and dispersed development patterns, which in turn strengthen automobile dependence and discourages alternative forms of transportation such as transit and walking.**

**It is UrbanTrans' opinion the existing parking provision to accommodate all future parking demands on the subject site comprising of a motor vehicle sales, auto repair shop and a restaurant with approximately 365 square metres, 353 square metres and 250 square metres of gross floor area (GFA), respectively is reasonable and justified based on the justifications and TDM measures and incentives provided in this Study without adversely impacting users of the 26 Bramsteele Road property users.**

**Appendix  
Existing Site Plan**





**DEVELOPMENT CONCEPT PLAN - 2466482 ONTARIO INC.**

26 BRAMSTEELE ROAD  
PART OF LOT 1,  
CONCESSION 2 E.H.S.  
CITY OF BRAMPTON  
REGION OF PEEL

█ Subject Lands

**Existing Development Statistics**

Site Area: ±0.30ha (0.74ac)  
Total GFA: ±968m² (10,420ft²)  
Parking Provided: 33 Spaces  
6 Tandem Spaces

**Notes:**

Typical Perpendicular Parking Space: 2.7m x 5.4m  
Typical Parallel Parking Space: 2.75m x 6.5m

- ▼ Denotes an entrance door
- ▽ Denotes an overhead door

**Required Variances:**

- ① To permit a motor vehicle sales establishment having a gross floor area of 365 square metres (3,928.83 square feet);
- ② To permit an existing convenience restaurant having a commercial gross floor area of 250 square metres (2,690.67 square feet); and
- ③ To permit a total of 33 parking spaces.



Scale 1:250  
November 22, 2019





**Appendix B**  
**Existing Transit Routes**







**7 Kennedy**

[View In Website Mode](#)

The 7 bus line (Kennedy) has 6 routes. For regular weekdays, their operation hours are:

(1) 7 Kennedy North: 12:17 AM - 11:47 PM (2) 7 Kennedy North To Heart Lake Terminal: 12:00 AM - 11:30 PM (3) 7 Kennedy Sb-Htlk: 1:30 AM - 11:43 PM (4) 7 Kennedy South: 12:08 AM - 11:37 PM (5) 7a Kennedy North: 12:13 AM - 10:57 PM (6) 7a Kennedy South: 5:11 AM - 11:39 PM

Use the Moovit App to find the closest 7 bus station near you and find out when is the next 7 bus arriving.

**Direction: 7 Kennedy North**

60 stops

[VIEW LINE SCHEDULE](#)

- Hurontario St At Courtneypark Dr E
- Hurontario St At Ambassador Dr
- Hurontario St At Superior Blvd
- Hurontario St At Admiral Blvd
- Hurontario St At Derry Rd E
- Derry Rd At Edwards Blvd
- Derry Rd Btwn Edwards Blvd And Kenderry Gate
- Derry Rd At Kenderry Gate
- Kennedy Rd S N/Of Derry Rd
- Kennedy Rd S at Secretariat Crt
- Kennedy Rd S at Caa Centre
- Kennedy Rd at 7580 Kennedy Rd
- Kennedy Rd at 7725 Kennedy Rd
- Kennedy Rd S N/Of First Gulf Blvd
- Kennedy Rd S/Of Steeles Ave
- Kennedy Rd S N/Of Steeles Ave E
- Kennedy Rd S at 370 Kennedy Rd S
- Kennedy Rd Opp Rambler Dr
- Kennedy Rd S N/Of Rambler Dr
- Kennedy Rd S at Glidden Rd
- Kennedy Rd S Opp Tullamore Rd

**7 bus Time Schedule**

7 Kennedy North Route Timetable:

Sunday	12:04 AM - 11:03 PM
Monday	6:28 AM - 11:03 PM
Tuesday	4:25 AM - 11:47 PM
Wednesday	12:17 AM - 11:47 PM
Thursday	12:17 AM - 11:47 PM
Friday	12:17 AM - 11:47 PM
Saturday	12:17 AM - 11:34 PM

**7 bus Info**

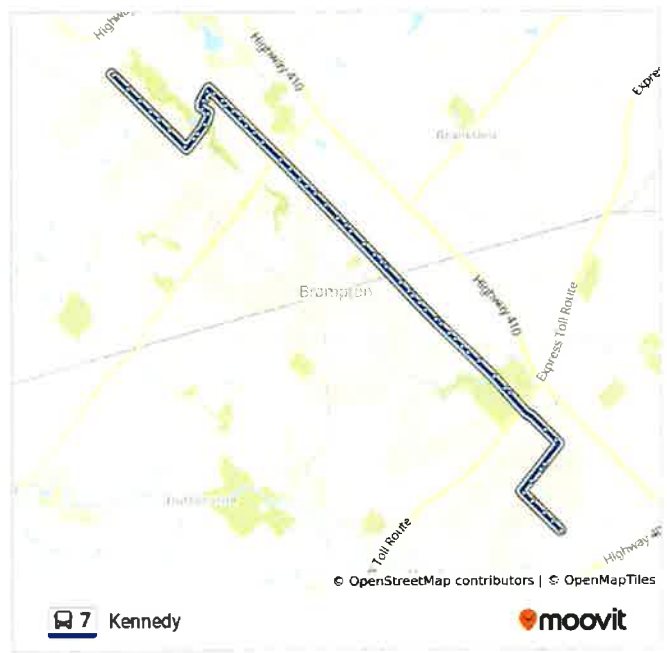
**Direction:** 7 Kennedy North

**Stops:** 60

**Trip Duration:** 49 min

**Line Summary:**

Kennedy Rd S at Stafford Dr  
 Kennedy Rd S Opp Dean St (At 110 Kennedy Rd )  
 Kennedy Rd S Opp Research Rd (At 90 Kennedy Rd )  
 Kennedy Rd S at Clarence St  
 Kennedy Rd S N/Of Orenda Rd  
 Kennedy Rd S at Eastern Ave  
 Kennedy Rd S at Queen St E  
 Kennedy Rd N Opp Church St  
 Kennedy Rd N Opp Edgemont Dr  
 Kennedy Rd N at Centennial Mall  
 Kennedy Rd N at Vodden St E  
 Kennedy Rd N at Townsend Gate  
 Kennedy Rd N at Williams Pky E  
 Kennedy Rd N N/Of Williams Pky E  
 Kennedy Rd N at Rutherford Rd N  
 Kennedy Rd N Btwn Rutherford Rd N & Bovaird Dr E  
 Kennedy Rd N at Bovaird Dr E  
 Kennedy Rd N at Notre Dame Ave  
 Kennedy Rd N Btwn Notre Dame Ave & Cochrane Ave  
 Kennedy Rd N at Cochrane Ave  
 Kennedy Rd N at Heart Lake Medical  
 Kennedy Rd N at Piedmont Dr  
 Kennedy Rd N N/Of Piedmont Dr  
 Kennedy Rd N at Sandalwood Pky E  
 Kennedy Rd N N/Of Sandalwood Pky E  
 Conestoga Dr at Mondragon Circle  
 Heart Lake Terminal  
 Conestoga Dr at Loafers Lake Lane  
 Sandalwood Pky E W/Of Conestoga Dr  
 Sandalwood Pky E Opp 95 Sandalwood Pky E (Firestat



Sandalwood Pky E at Braidwood Lake Rd

Sandalwood Pky E W/Of Braidwood Lake Rd

Sandalwood - Zum Main Station Stop Nb

Hurontario St S/Of Petworth Rd

Hurontario St Opp 10866 Hurontario St

Hurontario St S/Of Conservation Dr

Hurontario St S/Of Perth St

Hurontario St S/Of Roycrest St

Hurontario St S/Of Mayfield Rd



**Direction: 7 Kennedy North To Heart Lake Terminal**

48 stops

[VIEW LINE SCHEDULE](#)

- Hurontario St At Courtneypark Dr E
- Hurontario St At Ambassador Dr
- Hurontario St At Superior Blvd
- Hurontario St At Admiral Blvd
- Hurontario St At Derry Rd E
- Derry Rd At Edwards Blvd
- Derry Rd Btwn Edwards Blvd And Kenderry Gate
- Derry Rd At Kenderry Gate
- Kennedy Rd S N/Of Derry Rd
- Kennedy Rd S at Secretariat Crt
- Kennedy Rd S at Caa Centre
- Kennedy Rd at 7580 Kennedy Rd
- Kennedy Rd at 7725 Kennedy Rd
- Kennedy Rd S N/Of First Gulf Blvd
- Kennedy Rd S/Of Steeles Ave
- Kennedy Rd S N/Of Steeles Ave E
- Kennedy Rd S at 370 Kennedy Rd S
- Kennedy Rd Opp Rambler Dr
- Kennedy Rd S N/Of Rambler Dr
- Kennedy Rd S at Glidden Rd
- Kennedy Rd S Opp Tullamore Rd
- Kennedy Rd S at Stafford Dr
- Kennedy Rd S Opp Dean St (At 110 Kennedy Rd )
- Kennedy Rd S Opp Research Rd (At 90 Kennedy Rd )
- Kennedy Rd S at Clarence St
- Kennedy Rd S N/Of Orenda Rd
- Kennedy Rd S at Eastern Ave
- Kennedy Rd S at Queen St E

**7 bus Time Schedule**

7 Kennedy North To Heart Lake Terminal Route  
Timetable:

Sunday	12:00 AM - 11:30 PM
Monday	12:00 AM - 11:30 PM
Tuesday	12:00 AM - 11:30 PM
Wednesday	12:00 AM - 11:30 PM
Thursday	12:00 AM - 11:30 PM
Friday	12:00 AM - 11:30 PM
Saturday	12:00 AM - 11:30 PM

**7 bus Info**

**Direction:** 7 Kennedy North To Heart Lake Terminal

**Stops:** 48

**Trip Duration:** 34 min

**Line Summary:**



Kennedy Rd N Opp Church St

Kennedy Rd N Opp Edgemont Dr

Kennedy Rd N at Centennial Mall

Kennedy Rd N at Vodden St E

Kennedy Rd N at Townsend Gate

Kennedy Rd N at Williams Pky E

Kennedy Rd N N/Of Williams Pky E

Kennedy Rd N at Rutherford Rd N

Kennedy Rd N Btwn Rutherford Rd N & Bovaird Dr  
E

Kennedy Rd N at Bovaird Dr E

Kennedy Rd N at Notre Dame Ave

Kennedy Rd N Btwn Notre Dame Ave & Cochrane  
Ave

Kennedy Rd N at Cochrane Ave

Kennedy Rd N at Heart Lake Medical

Kennedy Rd N at Piedmont Dr

Kennedy Rd N N/Of Piedmont Dr

Kennedy Rd N at Sandalwood Pky E

Kennedy Rd N N/Of Sandalwood Pky E

Conestoga Dr at Mondragon Circle

Heart Lake Terminal

**Direction: 7 Kennedy Sb-Htlk**

12 stops

[VIEW LINE SCHEDULE](#)

- Hurontario St S/Of Mayfield Rd
- Mayfield Rd Opp Summer Valley Dr
- Mayfield Rd W/Of Inder Heights Dr
- Mayfield Rd W/Of Kennedy Rd
- Kennedy Rd N S/Of Kenpark Ave
- Kennedy Rd N at Carnforth Dr
- Kennedy Rd N Opp Christie Dr
- Kennedy Dr N S/Of Conservation Dr
- Kennedy Rd N Opp Mcfadden Dr
- Kennedy Rd N S/Of Somerset Dr
- Conestoga Dr at Mondragon Circle
- Heart Lake Terminal

**7 bus Time Schedule**

7 Kennedy Sb-Htlk Route Timetable:

Sunday	1:16 AM - 11:43 PM
Monday	8:11 PM - 11:43 PM
Tuesday	3:39 PM - 11:43 PM
Wednesday	1:30 AM - 11:43 PM
Thursday	1:30 AM - 11:43 PM
Friday	1:30 AM - 11:43 PM
Saturday	1:30 AM - 11:43 PM

**7 bus Info**

**Direction:** 7 Kennedy Sb-Htlk

**Stops:** 12

**Trip Duration:** 8 min

**Line Summary:**



## Direction: 7 Kennedy South

60 stops

[VIEW LINE SCHEDULE](#)

Hurontario St S/Of Mayfield Rd  
Mayfield Rd Opp Summer Valley Dr  
Mayfield Rd W/Of Inder Heights Dr  
Mayfield Rd W/Of Kennedy Rd  
Kennedy Rd N S/Of Kenpark Ave  
Kennedy Rd N at Carnforth Dr  
Kennedy Rd N Opp Christie Dr  
Kennedy Dr N S/Of Conservation Dr  
Kennedy Rd N Opp Mcfadden Dr  
Kennedy Rd N S/Of Somerset Dr  
Conestoga Dr at Mondragon Circle  
Heart Lake Terminal  
Conestoga Dr at Loafers Lake Lane  
Sandalwood Pky E E/Of Conestoga Dr  
Sandalwood Pkwy W/Of Kennedy Rd  
Kennedy Rd N Opp Piedmont Dr  
Kennedy Rd N Opp Heart Lake Medical Bldg  
Kennedy Rd N at Ruth Ave  
Kennedy Rd N Btwn Ruth Ave & Wexford Rd  
Kennedy Rd N at Wexford Rd  
Kennedy Rd N at Bovaird Dr E  
Kennedy Rd N Btwn Bovaird Dr E & Centre St N  
Kennedy Rd N at Centre St N  
Kennedy Rd N Btwn Centre St N & Williams Pky E  
Kennedy Rd N at Williams Pky E  
Kennedy Rd N at Linkdale Rd  
Kennedy Rd N at Vodden St E  
Kennedy Rd N Opp Centennial Mall Private Entrance

## 7 bus Time Schedule

7 Kennedy South Route Timetable:

Sunday	12:21 AM - 11:19 PM
Monday	6:42 AM - 11:19 PM
Tuesday	4:35 AM - 11:37 PM
Wednesday	12:08 AM - 11:37 PM
Thursday	12:08 AM - 11:37 PM
Friday	12:08 AM - 11:37 PM
Saturday	12:08 AM - 11:52 PM

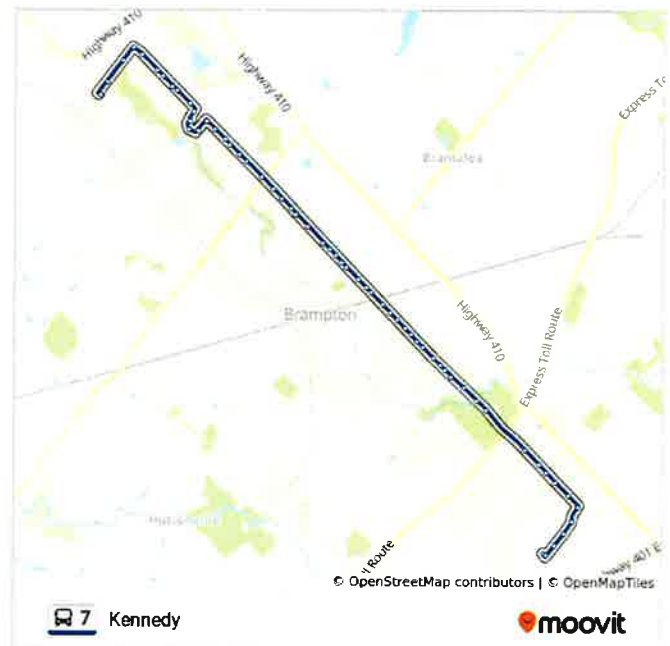
## 7 bus Info

**Direction:** 7 Kennedy South

**Stops:** 60

**Trip Duration:** 48 min

**Line Summary:**



Kennedy Rd N at Edgemont Dr

Kennedy Rd N at Mccauley St

Kennedy Rd N at Church St E

Kennedy Rd S S/Of Queen St E

Kennedy Rd S S/Of Eastern Ave

Kennedy Rd S at Orenda Rd

Kennedy Rd S at Clarence St

Kennedy Rd S at Research Rd

Kennedy Rd S at Dean St

Kennedy Rd S at Tullamore Crt (Tullamore  
Nursing)

Kennedy Rd S S/Of Tullamore Crt

Kennedy Rd S at Chamney Crt

Kennedy Rd S/Of Chamney Crt

Kennedy Rd S S/Of Rambler Dr

Kennedy Rd S at 365 Kennedy Rd S

Kennedy Rd N/Of Steeles Ave

Kennedy Rd S S/Of Steeles Ave E

Kennedy Rd S at Hartford Trail

Kennedy Rd S at Brampton Golf Club (7700  
Kennedy)

Kennedy Rd S Opp Caa Centre

Kennedy Rd S Opp Secretariat Court

Kennedy Rd S N/Of Derry Rd

Kennedy Rd At Gibraltar Dr

Kennedy Rd S at Admiral Blvd

Kennedy Rd At Ambassador Dr

Kennedy Rd At Courtneypark Dr

Courtneypark Dr E W/Of Kennedy Rd

Courtneypark Dr E at Innovator Dr

Courtneypark Dr Btwn Innovator Dr And Edwards  
Bl

Courtneypark Dr at Edwards Blvd

Courtneypark Dr At Hurontario St





## Direction: 7a Kennedy North

48 stops

[VIEW LINE SCHEDULE](#)

Hurontario St At Courtneypark Dr E  
Hurontario St At Ambassador Dr  
Hurontario St At Superior Blvd  
Hurontario St At Admiral Blvd  
Hurontario St At Derry Rd E  
Derry Rd At Edwards Blvd  
Derry Rd Btwn Edwards Blvd And Kenderry Gate  
Derry Rd At Kenderry Gate  
Kennedy Rd S N/Of Derry Rd  
Kennedy Rd S at Secretariat Crt  
Kennedy Rd S at Caa Centre  
Kennedy Rd at 7580 Kennedy Rd  
Kennedy Rd at 7725 Kennedy Rd  
Kennedy Rd S N/Of First Gulf Blvd  
Kennedy Rd S/Of Steeles Ave  
Kennedy Rd S N/Of Steeles Ave E  
Kennedy Rd S at 370 Kennedy Rd S  
Kennedy Rd Opp Rambler Dr  
Kennedy Rd S N/Of Rambler Dr  
Kennedy Rd S at Glidden Rd  
Kennedy Rd S Opp Tullamore Rd  
Kennedy Rd S at Stafford Dr  
Kennedy Rd S Opp Dean St (At 110 Kennedy Rd )  
Kennedy Rd S Opp Research Rd (At 90 Kennedy Rd )  
Kennedy Rd S at Clarence St  
Kennedy Rd S N/Of Orenda Rd  
Kennedy Rd S at Eastern Ave  
Kennedy Rd S at Queen St E

## 7 bus Time Schedule

7a Kennedy North Route Timetable:

Sunday	Not Operational
Monday	Not Operational
Tuesday	6:10 AM - 10:57 PM
Wednesday	12:13 AM - 10:57 PM
Thursday	12:13 AM - 10:57 PM
Friday	12:13 AM - 10:57 PM
Saturday	12:13 AM - 7:06 PM

## 7 bus Info

**Direction:** 7a Kennedy North

**Stops:** 48

**Trip Duration:** 47 min

**Line Summary:**



Kennedy Rd N Opp Church St

Kennedy Rd N Opp Edgemont Dr

Kennedy Rd N at Centennial Mall

Kennedy Rd N at Vodden St E

Kennedy Rd N at Townsend Gate

Kennedy Rd N at Williams Pky E

Kennedy Rd N N/Of Williams Pky E

Kennedy Rd N at Rutherford Rd N

Kennedy Rd N Btwn Rutherford Rd N & Bovaird Dr  
E

Kennedy Rd N at Bovaird Dr E

Kennedy Rd N at Notre Dame Ave

Kennedy Rd N Btwn Notre Dame Ave & Cochrane  
Ave

Kennedy Rd N at Cochrane Ave

Kennedy Rd N at Heart Lake Medical

Kennedy Rd N at Piedmont Dr

Kennedy Rd N N/Of Piedmont Dr

Kennedy Rd N at Sandalwood Pky E

Kennedy Rd N N/Of Sandalwood Pky E

Conestoga Dr at Mondragon Circle

Heart Lake Terminal

**Direction: 7a Kennedy South**

49 stops

[VIEW LINE SCHEDULE](#)

- Heart Lake Terminal
- Conestoga Dr at Loafers Lake Lane
- Sandalwood Pky E E/Of Conestoga Dr
- Sandalwood Pkwy W/Of Kennedy Rd
- Kennedy Rd N Opp Piedmont Dr
- Kennedy Rd N Opp Heart Lake Medical Bldg
- Kennedy Rd N at Ruth Ave
- Kennedy Rd N Btwn Ruth Ave & Wexford Rd
- Kennedy Rd N at Wexford Rd
- Kennedy Rd N at Bovaird Dr E
- Kennedy Rd N Btwn Bovaird Dr E & Centre St N
- Kennedy Rd N at Centre St N
- Kennedy Rd N Btwn Centre St N & Williams Pky E
- Kennedy Rd N at Williams Pky E
- Kennedy Rd N at Linkdale Rd
- Kennedy Rd N at Vodden St E
- Kennedy Rd N Opp Centennial Mall Private Entrance
- Kennedy Rd N at Edgemont Dr
- Kennedy Rd N at Mccaull St
- Kennedy Rd N at Church St E
- Kennedy Rd S S/Of Queen St E
- Kennedy Rd S S/Of Eastern Ave
- Kennedy Rd S at Orenda Rd
- Kennedy Rd S at Clarence St
- Kennedy Rd S at Research Rd
- Kennedy Rd S at Dean St
- Kennedy Rd S at Tullamore Crt (Tullamore Nursing)
- Kennedy Rd S S/Of Tullamore Crt

**7 bus Time Schedule**

7a Kennedy South Route Timetable:

Sunday	Not Operational
Monday	Not Operational
Tuesday	5:11 AM - 11:39 PM
Wednesday	5:11 AM - 11:39 PM
Thursday	5:11 AM - 11:39 PM
Friday	5:11 AM - 11:39 PM
Saturday	10:09 AM - 6:58 PM

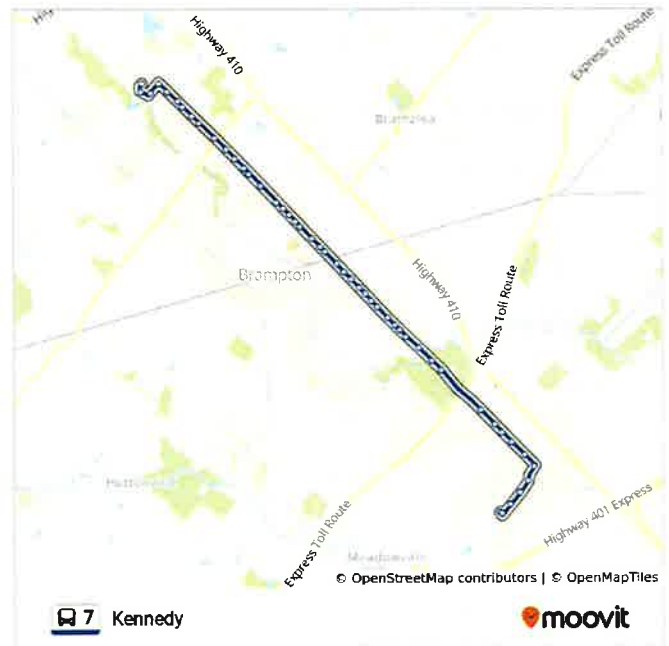
**7 bus Info**

**Direction:** 7a Kennedy South

**Stops:** 49

**Trip Duration:** 43 min

**Line Summary:**



Kennedy Rd S at Chamney Crt

Kennedy Rd S/Of Chamney Crt

Kennedy Rd S S/Of Rambler Dr

Kennedy Rd S at 365 Kennedy Rd S

Kennedy Rd N/Of Steeles Ave

Kennedy Rd S S/Of Steeles Ave E

Kennedy Rd S at Hartford Trail

Kennedy Rd S at Brampton Golf Club (7700  
Kennedy)

Kennedy Rd S Opp Caa Centre

Kennedy Rd S Opp Secretariat Court

Kennedy Rd S N/Of Derry Rd

Kennedy Rd At Gibraltar Dr

Kennedy Rd S at Admiral Blvd

Kennedy Rd At Ambassador Dr

Kennedy Rd At Courtneypark Dr

Courtneypark Dr E W/Of Kennedy Rd

Courtneypark Dr E at Innovator Dr

Courtneypark Dr Btwn Innovator Dr And Edwards  
Bl

Courtneypark Dr at Edwards Blvd

Courtneypark Dr At Hurontario St

Hurontario St At Courtneypark Dr E

7 bus time schedules and route maps are available in an offline PDF at [moovitapp.com](https://moovitapp.com). Use the [Moovit App](#) to see live bus times, train schedule or subway schedule, and step-by-step directions for all public transit in Toronto.

[About Moovit](#) · [MaaS Solutions](#) · [Supported Countries](#) · [Mooviter Community](#)

© 2022 Moovit - All Rights Reserved

## Check Live Arrival Times





## South Industrial

[View In Website Mode](#)

The 10 bus line (South Industrial) has 2 routes. For regular weekdays, their operation hours are:  
 (1) 10 South Industrial Northbound: 5:53 AM - 7:20 PM (2) 10 South Industrial Southbound: 5:25 AM - 6:55 PM  
 Use the Moovit App to find the closest 10 bus station near you and find out when is the next 10 bus arriving.

### Direction: 10 South Industrial Northbound

28 stops

[VIEW LINE SCHEDULE](#)

- Kennedy Rd S N/Of First Gulf Blvd
- Kennedy Rd S/Of Steeles Ave
- Kennedy - Zum Steeles Station Stop Eb
- Rutherford Rd S N/Of Steeles Ave E
- Rutherford Rd S/Of Bramsteele Rd
- Rutherford Rd S N/Of Bramsteele Rd
- Rutherford Rd S at Glidden Rd
- Rutherford Rd S at Selby Rd
- Rutherford Rd S Opp Stafford Rd
- Rutherford Rd S at Clarence St
- Orenda Rd E/Of Rutherford Rd S
- Orenda Rd Btw Rutherford Rd S & Heart Lake Rd
- Orenda Rd Opp Heart Lake Rd
- Orenda Rd Opp Tilbury Crt
- Orenda Rd at 237 Orenda Rd
- Orenda Rd at Titan Rd
- West Dr N/Of Orenda Rd
- West Dr S/Of Clark Blvd ( 55 West Dr )
- Clark Blvd E/Of West Dr
- Clark Blvd at 185 Clark Blvd
- Clark Blvd at Terese Rd
- Clark Blvd at Braemar Dr

### 10 bus Time Schedule

10 South Industrial Northbound Route Timetable:

Sunday	Not Operational
Monday	Not Operational
Tuesday	5:53 AM - 7:20 PM
Wednesday	5:53 AM - 7:20 PM
Thursday	5:53 AM - 7:20 PM
Friday	5:53 AM - 7:20 PM
Saturday	Not Operational

### 10 bus Info

**Direction:** 10 South Industrial Northbound

**Stops:** 28

**Trip Duration:** 22 min

**Line Summary:**



Clark Blvd at Briar Path

Clark Blvd W/Of Central Park Dr

Central Park Dr N/Of Clark Blvd

Knightsbridge Rd W/Of Central Park Drive

Team Canada Dr Btwn Knightsbridge & Peel Cente  
Dr

Bramalea Terminal



**Direction: 10 South Industrial Southbound**

28 stops

[VIEW LINE SCHEDULE](#)

- Bramalea Terminal
- Central Park Dr N/Of Clark Blvd
- Clark Blvd W/Of Peel Centre Dr
- Clark Blvd E/Of Dixie Rd
- Clark Blvd at Lisa St
- Clark Blvd Opp 185 Clark Blvd
- West Dr S/Of Clark Blvd
- West Dr at 60 West Dr
- West Dr at Norpak Whse
- West Dr S/Of Orenda Rd
- Glidden Rd W/Of West Dr
- Glidden Rd at Blair Dr
- Glidden Rd at Heart Lake Rd
- Glidden Rd W/Of Heart Lake Rd
- Glidden Rd at Hale Rd
- Hale Rd S/Of Glidden Rd
- Hale Rd Btwn Glidden Rd & Bramsteele Ave
- Hale Rd N/Of Bramsteele Ave
- Bramsteele Ave E/Of Rutherford Rd
- Rutherford Rd S at Steeles Ave E
- First Gulf Blvd N/Of Biscayne Cres (N)
- Biscayne Cres E/Of First Gulf Blvd (S)
- Biscayne Cres E/Of Clipper Crt
- Biscayne Cres at 150 Biscayne Cres
- Biscayne Cres E/Of First Gulf Blvd (N)
- First Gulf Blvd at Biscayne Cres S
- First Gulf Blvd Btwn Biscayne Cres (S) And Kennedy
- Kennedy Rd S N/Of First Gulf Blvd

**10 bus Time Schedule**

10 South Industrial Southbound Route Timetable:

Sunday	Not Operational
Monday	Not Operational
Tuesday	5:25 AM - 6:55 PM
Wednesday	5:25 AM - 6:55 PM
Thursday	5:25 AM - 6:55 PM
Friday	5:25 AM - 6:55 PM
Saturday	Not Operational

**10 bus Info**

**Direction:** 10 South Industrial Southbound

**Stops:** 28

**Trip Duration:** 24 min

**Line Summary:**



10 bus time schedules and route maps are available in an offline PDF at moovitapp.com. Use the [Moovit App](#) to see live bus times, train schedule or subway schedule, and step-by-step directions for all public transit in Toronto.

[About Moovit](#) · [MaaS Solutions](#) · [Supported Countries](#) · [Mooviter Community](#)

© 2022 Moovit - All Rights Reserved

### Check Live Arrival Times





## 11 Steeles Eastbound

[View In Website Mode](#)

The 11 bus line (11 Steeles Eastbound) has 8 routes. For regular weekdays, their operation hours are:  
 (1) 11 Steeles Eastbound: 1:45 AM - 11:50 PM (2) 11 Steeles Eb - Gate: 7:17 AM - 6:23 PM (3) 11 Steeles Westbound: 12:08 AM - 11:41 PM (4) 11a Steeles Eastbound: 1:00 AM - 11:57 PM (5) 11a Steeles Westbound: 12:11 AM - 11:56 PM (6) 11d Steeles Eb - Gate: 12:15 AM - 11:36 PM (7) 11d Steeles Eb - Humber: 7:24 AM (8) 11d Steeles Wb - Lisgar: 5:50 AM - 9:50 PM

Use the Moovit App to find the closest 11 bus station near you and find out when is the next 11 bus arriving.

**Direction: 11 Steeles Eastbound**  
 63 stops  
[VIEW LINE SCHEDULE](#)

- Lisgar Go Station
- Argentia - Zum Steeles Stop Eb
- Winston Churchill - Zum Steeles Station Stop Eb
- Heritage - Zum Steeles Station Stop Eb
- Hereford - Zum Steeles Station Stop Eb
- Mississauga Road - Zum Steeles Station Stop Eb
- Financial - Zum Steeles Station Stop Eb
- Steeles Ave W at Churchville Rd
- Steeles Ave Opp Polonia Ave
- Steeles Ave W at Clementine Dr
- Steeles Ave W/Of Mavis Rd
- Steeles Ave W E/Of Mavis Rd
- Steeles Ave W Btwn Mavis Rd & Windmill Blvd
- Steeles Ave W at Windmill Blvd
- Steeles Ave W at Mclaughlin Rd S
- Sheridan College
- Sheridan College
- Malta - Zum Steeles Station Stop Eb
- Gateway Terminal at Shoppers World
- Steeles Ave E E/Of Hurontario St

### 11 bus Time Schedule

11 Steeles Eastbound Route Timetable:

Sunday	5:07 AM - 11:50 PM
Monday	5:07 AM - 11:50 PM
Tuesday	4:25 AM - 11:50 PM
Wednesday	1:45 AM - 11:50 PM
Thursday	1:45 AM - 11:50 PM
Friday	1:45 AM - 11:50 PM
Saturday	1:45 AM - 11:50 PM

### 11 bus Info

**Direction:** 11 Steeles Eastbound  
**Stops:** 63  
**Trip Duration:** 70 min  
**Line Summary:**

Steeles Ave E Btwn Hurontario St & Hartford Tr

Steeles Ave At Hartford Trail

Kennedy - Zum Steeles Station Stop Eb

Steeles Ave E/Of Resolution Dr

Steeles Ave At First Gulf Blvd

Tomken - Zum Steeles Station Stop Eb

Steeles Ave E Btwn Tomken Rd & Dixie Rd

Steeles Ave W/Of Dixie Rd

Dixie - Zum Steeles Station Stop Eb

Steeles Ave E at Advance Blvd

Bramalea Go Station-Route 11/11a/511/A/C Eb Stop

Steeles Ave E/Of Bramalea Rd

Steeles Ave At Melanie Dr

Steeles Ave At Melanie Dr

Torbram - Zum Steeles Station Stop Eb

Steeles Ave Opp Pearson Convention Centre

Steeles Ave At Airport Rd

Steeles Ave E Opp Parkhurst Sq

Steeles Ave E at 3389 Steeles Ave E (Bombay Whse)

Steeles Ave E at Goreway Dr

Goreway Dr S/Of Steeles Ave E

Kenview Blvd E/Of Goreway Dr

Kenview Blvd at 5 Kenview Blvd

Kenview Blvd at 11 Kenview Blvd

Kenview Blvd E/Of Castlview Dr (19 Kenview Blvd)

Kenview Blvd at Parkshore Dr

Finch Ave N/Of Kenview Blvd

Finch Ave S/Of Steeles Ave

Steeles Ave W/Of Hwy 50

Steeles Ave W/Of Alcide St

Steeles Ave W/Of Signal Hill Ave



Signal Hill Ave N/Of Steinway Blvd

Steinway Blvd W/Of Signal Hill Ave

Steinway Blvd N/Of Albion Rd

Humberline Dr S/Of Albion Rd

Humberline Dr At Hundersfield Rd

Humberline Dr at 310 Humberline Dr

Humberline Dr N/Of Claireville Dr (S)

Finch Ave E/Of Humberline Dr

Finch Ave Btwn Humberline Dr And Humber  
College Bl

Finch Ave At Humber College Blvd

Humber College Blvd S/Of Humberline Dr

Humber College Terminal - Route 11/11a Stop



## Direction: 11 Steeles Eb - Gate

19 stops

[VIEW LINE SCHEDULE](#)

Lisgar Go Station  
Argentia - Zum Steeles Stop Eb  
Winston Churchill - Zum Steeles Station Stop Eb  
Heritage - Zum Steeles Station Stop Eb  
Hereford - Zum Steeles Station Stop Eb  
Mississauga Road - Zum Steeles Station Stop Eb  
Financial - Zum Steeles Station Stop Eb  
Steeles Ave W at Churchville Rd  
Steeles Ave Opp Polonia Ave  
Steeles Ave W at Clementine Dr  
Steeles Ave W/Of Mavis Rd  
Steeles Ave W E/Of Mavis Rd  
Steeles Ave W Btwn Mavis Rd & Windmill Blvd  
Steeles Ave W at Windmill Blvd  
Steeles Ave W at Mclaughlin Rd S  
Sheridan College  
Sheridan College  
Malta - Zum Steeles Station Stop Eb  
Gateway Terminal at Shoppers World

## 11 bus Time Schedule

11 Steeles Eb - Gate Route Timetable:

Sunday	7:17 AM - 12:48 PM
Monday	7:17 AM - 12:48 PM
Tuesday	7:17 AM - 6:23 PM
Wednesday	7:17 AM - 6:23 PM
Thursday	7:17 AM - 6:23 PM
Friday	7:17 AM - 6:23 PM
Saturday	7:17 AM - 12:48 PM

## 11 bus Info

**Direction:** 11 Steeles Eb - Gate

**Stops:** 19

**Trip Duration:** 25 min

**Line Summary:**



**Direction: 11 Steeles Westbound**

49 stops

[VIEW LINE SCHEDULE](#)

- Humber College Terminal - Route 11/11a Stop
- Finch Ave West at Woodbine Downs Blvd
- Finch Ave W/Of Humber College Blvd
- Finch Ave At Humberline Dr
- Finch Ave At Longo Circle
- Finch Ave N/Of Longo Circle
- Kenview Blvd W/Of Finch Ave
- Kenview Blvd W/Of Parkshore Dr
- Kenview Blvd at 26 Kenview Blvd
- Kenview Blvd at 14 Kenview Blvd
- Kenview Blvd at Paget Rd
- Kenview Blvd at Goreway Dr
- Goreway Dr Btwn Kenview Blvd And Steeles Ave E
- Steeles Ave At Goreway Dr
- Steeles Ave E at Parkhurst Sq
- Steeles Ave At Airport Rd
- Torbram - Zum Steeles Station Stop Wb
- Steeles Ave At Melanie Dr
- Steeles Ave At Melanie Dr
- Steeles Ave E/Of Bramalea Rd
- Bramalea Go Station-Route 11/11a/511/A/C Wb Stop
- Steeles Ave W/Of Advance Blvd
- Dixie - Zum Steeles Station Stop Wb
- Steeles Ave E Btwn Dixie Rd & West Dr
- West Drive - Zum Steeles Station Stop Wb
- Rutherford - Zum Steeles Station Stop Wb
- Steeles Ave E E/Of Resolution Dr
- Steeles Ave E/Of Kennedy Rd

**11 bus Time Schedule**

11 Steeles Westbound Route Timetable:

Sunday	12:02 AM - 11:34 PM
Monday	6:27 AM - 11:34 PM
Tuesday	5:46 AM - 11:41 PM
Wednesday	12:08 AM - 11:41 PM
Thursday	12:08 AM - 11:41 PM
Friday	12:08 AM - 11:41 PM
Saturday	12:08 AM - 11:34 PM

**11 bus Info**

**Direction:** 11 Steeles Westbound

**Stops:** 49

**Trip Duration:** 68 min

**Line Summary:**



Steeles Ave At Kennedy Rd

Steeles Ave At Orchard Dr

Steeles Ave E at 152 Steeles Ave

Steeles Ave E/Of Main St

Gateway Terminal at Shoppers World

Mcmurphy - Zum Steeles Station Stop Wb

Sheridan College

Steeles Ave W at Tait Blvd

Steeles Ave W at Beaconsfield Walkway

Chinguacousy - Zum Steeles Station Stop Wb

Steeles Ave W W/Of James Potter Dr

Steeles Ave W at Polonia Ave

Steeles Ave at Churchville Rd

Steeles Ave W E/Of Financial Dr

Financial - Zum Steeles Station Stop Wb

Mississauga Road - Zum Steeles Station Stop Wb

Rivermont - Zum Steeles Station Stop Wb

Heritage - Zum Steeles Station Stop Wb

Winston Churchill - Zum Steeles Station Stop Wb

Argentia - Zum Steeles Stop Wb

Lisgar Go Station

**Direction: 11a Steeles Eastbound**

45 stops

[VIEW LINE SCHEDULE](#)

- Gateway Terminal at Shoppers World
- Steeles Ave E E/Of Hurontario St
- Steeles Ave E Btwn Hurontario St & Hartford Tr
- Steeles Ave At Hartford Trail
- Kennedy - Zum Steeles Station Stop Eb
- Steeles Ave E/Of Resolution Dr
- Steeles Ave At First Gulf Blvd
- Tomken - Zum Steeles Station Stop Eb
- Steeles Ave E Btwn Tomken Rd & Dixie Rd
- Steeles Ave W/Of Dixie Rd
- Dixie - Zum Steeles Station Stop Eb
- Steeles Ave E at Advance Blvd
- Bramalea Go Station-Route 11/11a/511/A/C Eb Stop
- Steeles Ave E/Of Bramalea Rd
- Steeles Ave At Melanie Dr
- Steeles Ave At Melanie Dr
- Torbram - Zum Steeles Station Stop Eb
- Steeles Ave Opp Pearson Convention Centre
- Steeles Ave At Airport Rd
- Steeles Ave E Opp Parkhurst Sq
- Steeles Ave E at 3389 Steeles Ave E (Bombay Whse)
- Steeles Ave E at Goreway Dr
- Goreway Dr S/Of Steeles Ave E
- Kenview Blvd E/Of Goreway Dr
- Kenview Blvd at 5 Kenview Blvd
- Kenview Blvd at 11 Kenview Blvd
- Kenview Blvd E/Of Castlerview Dr (19 Kenview Blvd)

**11 bus Time Schedule**

11a Steeles Eastbound Route Timetable:

Sunday	7:51 AM - 10:45 PM
Monday	7:51 AM - 10:45 PM
Tuesday	4:24 AM - 11:57 PM
Wednesday	1:00 AM - 11:57 PM
Thursday	1:00 AM - 11:57 PM
Friday	1:00 AM - 11:57 PM
Saturday	1:00 AM - 11:48 PM

**11 bus Info**

**Direction:** 11a Steeles Eastbound

**Stops:** 45

**Trip Duration:** 48 min

**Line Summary:**



Kenview Blvd at Parkshore Dr

Finch Ave N/Of Kenview Blvd

Finch Ave S/Of Steeles Ave

Steeles Ave W/Of Hwy 50

Steeles Ave W/Of Alcide St

Steeles Ave W/Of Signal Hill Ave

Signal Hill Ave N/Of Steinway Blvd

Steinway Blvd W/Of Signal Hill Ave

Steinway Blvd N/Of Albion Rd

Humberline Dr S/Of Albion Rd

Humberline Dr At Hundersfield Rd

Humberline Dr at 310 Humberline Dr

Humberline Dr N/Of Claireville Dr (S)

Finch Ave E/Of Humberline Dr

Finch Ave Btwn Humberline Dr And Humber  
College Bl

Finch Ave At Humber College Blvd

Humber College Blvd S/Of Humberline Dr

Humber College Terminal - Route 11/11a Stop

**Direction: 11a Steeles Westbound**

33 stops

[VIEW LINE SCHEDULE](#)

- Humber College Terminal - Route 11/11a Stop
- Finch Ave West at Woodbine Downs Blvd
- Finch Ave W/Of Humber College Blvd
- Finch Ave At Humberline Dr
- Finch Ave At Longo Circle
- Finch Ave N/Of Longo Circle
- Kenview Blvd W/Of Finch Ave
- Kenview Blvd W/Of Parkshore Dr
- Kenview Blvd at 26 Kenview Blvd
- Kenview Blvd at 14 Kenview Blvd
- Kenview Blvd at Paget Rd
- Kenview Blvd at Goreway Dr
- Goreway Dr Btwn Kenview Blvd And Steeles Ave E
- Steeles Ave At Goreway Dr
- Steeles Ave E at Parkhurst Sq
- Steeles Ave At Airport Rd
- Torbram - Zum Steeles Station Stop Wb
- Steeles Ave At Melanie Dr
- Steeles Ave At Melanie Dr
- Steeles Ave E/Of Bramalea Rd
- Bramalea Go Station-Route 11/11a/511/A/C Wb Stop
- Steeles Ave W/Of Advance Blvd
- Dixie - Zum Steeles Station Stop Wb
- Steeles Ave E Btwn Dixie Rd & West Dr
- West Drive - Zum Steeles Station Stop Wb
- Rutherford - Zum Steeles Station Stop Wb
- Steeles Ave E E/Of Resolution Dr
- Steeles Ave E/Of Kennedy Rd

**11 bus Time Schedule**

11a Steeles Westbound Route Timetable:

Sunday	1:02 AM - 11:56 PM
Monday	6:55 AM - 11:56 PM
Tuesday	5:05 AM - 11:56 PM
Wednesday	12:11 AM - 11:56 PM
Thursday	12:11 AM - 11:56 PM
Friday	12:11 AM - 11:56 PM
Saturday	12:11 AM - 11:56 PM

**11 bus Info**

**Direction:** 11a Steeles Westbound

**Stops:** 33

**Trip Duration:** 45 min

**Line Summary:**





Steeles Ave At Kennedy Rd

Steeles Ave At Orchard Dr

Steeles Ave E at 152 Steeles Ave

Steeles Ave E/Of Main St

Gateway Terminal at Shoppers World

## Direction: 11d Steeles Eb - Gate

21 stops

[VIEW LINE SCHEDULE](#)

Lisgar Go Station  
Argentia - Zum Steeles Stop Eb  
Winston Churchill Blvd N/Of Steeles Ave  
Winston Churchill Blvd at Maple Lodge Farms  
Winston Churchill - Zum Steeles Station Stop Eb  
Heritage - Zum Steeles Station Stop Eb  
Hereford - Zum Steeles Station Stop Eb  
Mississauga Road - Zum Steeles Station Stop Eb  
Financial - Zum Steeles Station Stop Eb  
Steeles Ave W at Churchville Rd  
Steeles Ave Opp Polonia Ave  
Steeles Ave W at Clementine Dr  
Steeles Ave W/Of Mavis Rd  
Steeles Ave W E/Of Mavis Rd  
Steeles Ave W Btwn Mavis Rd & Windmill Blvd  
Steeles Ave W at Windmill Blvd  
Steeles Ave W at Mclaughlin Rd S  
Sheridan College  
Sheridan College  
Malta - Zum Steeles Station Stop Eb  
Gateway Terminal at Shoppers World

## 11 bus Time Schedule

11d Steeles Eb - Gate Route Timetable:

Sunday	Not Operational
Monday	Not Operational
Tuesday	2:23 PM - 11:36 PM
Wednesday	12:15 AM - 11:36 PM
Thursday	12:15 AM - 11:36 PM
Friday	12:15 AM - 11:36 PM
Saturday	12:15 AM - 12:21 AM

## 11 bus Info

**Direction:** 11d Steeles Eb - Gate

**Stops:** 21

**Trip Duration:** 30 min

**Line Summary:**



**Direction: 11d Steeles Eb - Humber**

65 stops

[VIEW LINE SCHEDULE](#)

- Lisgar Go Station
- Argentia - Zum Steeles Stop Eb
- Winston Churchill Blvd N/Of Steeles Ave
- Winston Churchill Blvd at Maple Lodge Farms
- Winston Churchill - Zum Steeles Station Stop Eb
- Heritage - Zum Steeles Station Stop Eb
- Hereford - Zum Steeles Station Stop Eb
- Mississauga Road - Zum Steeles Station Stop Eb
- Financial - Zum Steeles Station Stop Eb
- Steeles Ave W at Churchville Rd
- Steeles Ave Opp Polonia Ave
- Steeles Ave W at Clementine Dr
- Steeles Ave W/Of Mavis Rd
- Steeles Ave W E/Of Mavis Rd
- Steeles Ave W Btwn Mavis Rd & Windmill Blvd
- Steeles Ave W at Windmill Blvd
- Steeles Ave W at Mclaughlin Rd S
- Sheridan College
- Sheridan College
- Malta - Zum Steeles Station Stop Eb
- Gateway Terminal at Shoppers World
- Steeles Ave E E/Of Hurontario St
- Steeles Ave E Btwn Hurontario St & Hartford Tr
- Steeles Ave At Hartford Trail
- Kennedy - Zum Steeles Station Stop Eb
- Steeles Ave E/Of Resolution Dr
- Steeles Ave At First Gulf Blvd
- Tomken - Zum Steeles Station Stop Eb
- Steeles Ave E Btwn Tomken Rd & Dixie Rd

**11 bus Time Schedule**

11d Steeles Eb - Humber Route Timetable:

Sunday	Not Operational
Monday	Not Operational
Tuesday	7:24 AM
Wednesday	7:24 AM
Thursday	7:24 AM
Friday	7:24 AM
Saturday	Not Operational

**11 bus Info**

**Direction:** 11d Steeles Eb - Humber

**Stops:** 65

**Trip Duration:** 88 min

**Line Summary:**



Steeles Ave W/Of Dixie Rd

Dixie - Zum Steeles Station Stop Eb

Steeles Ave E at Advance Blvd

Bramalea Go Station-Route 11/11a/511/A/C Eb  
Stop

Steeles Ave E/Of Bramalea Rd

Steeles Ave At Melanie Dr

Steeles Ave At Melanie Dr

Torbram - Zum Steeles Station Stop Eb

Steeles Ave Opp Pearson Convention Centre

Steeles Ave At Airport Rd

Steeles Ave E Opp Parkhurst Sq

Steeles Ave E at 3389 Steeles Ave E (Bombay  
Whse)

Steeles Ave E at Goreway Dr

Goreway Dr S/Of Steeles Ave E

Kenview Blvd E/Of Goreway Dr

Kenview Blvd at 5 Kenview Blvd

Kenview Blvd at 11 Kenview Blvd

Kenview Blvd E/Of Castlview Dr (19 Kenview  
Blvd)

Kenview Blvd at Parkshore Dr

Finch Ave N/Of Kenview Blvd

Finch Ave S/Of Steeles Ave

Steeles Ave W/Of Hwy 50

Steeles Ave W/Of Alcide St

Steeles Ave W/Of Signal Hill Ave

Signal Hill Ave N/Of Steinway Blvd

Steinway Blvd W/Of Signal Hill Ave

Steinway Blvd N/Of Albion Rd

Humberline Dr S/Of Albion Rd

Humberline Dr At Hudersfield Rd

Humberline Dr at 310 Humberline Dr

Humberline Dr N/Of Claireville Dr (S)

Finch Ave E/Of Humberline Dr

Finch Ave Btwn Humberline Dr And Humber  
College Bl

Finch Ave At Humber College Blvd

Humber College Blvd S/Of Humberline Dr

Humber College Terminal - Route 11/11a Stop

**Direction: 11d Steeles Wb - Lisgar**

19 stops

[VIEW LINE SCHEDULE](#)

- Gateway Terminal at Shoppers World
- Mcmurphy - Zum Steeles Station Stop Wb
- Sheridan College
- Steeles Ave W at Tait Blvd
- Steeles Ave W at Beaconsfield Walkway
- Chinguacousy - Zum Steeles Station Stop Wb
- Steeles Ave W W/Of James Potter Dr
- Steeles Ave W at Polonia Ave
- Steeles Ave at Churchville Rd
- Steeles Ave W E/Of Financial Dr
- Financial - Zum Steeles Station Stop Wb
- Mississauga Road - Zum Steeles Station Stop Wb
- Rivermont - Zum Steeles Station Stop Wb
- Heritage - Zum Steeles Station Stop Wb
- Winston Churchill Blvd N/Of Steeles Ave
- Winston Churchill Blvd at Maple Lodge Farms
- Winston Churchill - Zum Steeles Station Stop Wb
- Argentia - Zum Steeles Stop Wb
- Lisgar Go Station

**11 bus Time Schedule**

11d Steeles Wb - Lisgar Route Timetable:

Sunday	Not Operational
Monday	Not Operational
Tuesday	5:50 AM - 9:50 PM
Wednesday	5:50 AM - 9:50 PM
Thursday	5:50 AM - 9:50 PM
Friday	5:50 AM - 9:50 PM
Saturday	Not Operational

**11 bus Info**

**Direction:** 11d Steeles Wb - Lisgar

**Stops:** 19

**Trip Duration:** 34 min

**Line Summary:**





11 bus time schedules and route maps are available in an offline PDF at [moovitapp.com](https://moovitapp.com). Use the [Moovit App](#) to see live bus times, train schedule or subway schedule, and step-by-step directions for all public transit in Toronto.

[About Moovit](#) · [MaaS Solutions](#) · [Supported Countries](#) · [Mooviter Community](#)

© 2022 Moovit - All Rights Reserved

## Check Live Arrival Times



511

## 511 Zum Steeles East-Gtt

[View In Website Mode](#)

The 511 bus line (511 Zum Steeles East-Gtt) has 7 routes. For regular weekdays, their operation hours are:  
(1) 511 Zum Steeles East-Gtt: 5:32 PM - 6:08 PM (2) 511 Zum Steeles Eastbound: 4:23 AM - 11:45 PM (3) 511 Zum Steeles Westbound: 12:36 AM - 10:36 PM (4) 511a Zum Steeles East: 12:17 AM - 11:57 PM (5) 511a Zum Steeles West: 12:16 AM - 11:56 PM (6) 511c Zum Steeles East: 5:11 AM - 6:59 PM (7) 511c Zum Steeles West: 6:30 AM - 6:14 PM  
Use the Moovit App to find the closest 511 bus station near you and find out when is the next 511 bus arriving.

### Direction: 511 Zum Steeles East-Gtt

11 stops

[VIEW LINE SCHEDULE](#)

Lisgar Go Station  
Argentia - Zum Steeles Stop Eb  
Winston Churchill - Zum Steeles Station Stop Eb  
Heritage - Zum Steeles Station Stop Eb  
Hereford - Zum Steeles Station Stop Eb  
Mississauga Road - Zum Steeles Station Stop Eb  
Financial - Zum Steeles Station Stop Eb  
Steeles Ave W E/Of Mavis Rd  
Sheridan College  
Malta - Zum Steeles Station Stop Eb  
Gateway Terminal at Shoppers World

### 511 bus Time Schedule

511 Zum Steeles East-Gtt Route Timetable:

Sunday	Not Operational
Monday	Not Operational
Tuesday	5:32 PM - 6:08 PM
Wednesday	5:32 PM - 6:08 PM
Thursday	5:32 PM - 6:08 PM
Friday	5:32 PM - 6:08 PM
Saturday	Not Operational

### 511 bus Info

**Direction:** 511 Zum Steeles East-Gtt

**Stops:** 11

**Trip Duration:** 29 min

**Line Summary:**



**Direction: 511 Zum Steeles Eastbound**

23 stops

[VIEW LINE SCHEDULE](#)

- Lisgar Go Station
- Argentia - Zum Steeles Stop Eb
- Winston Churchill - Zum Steeles Station Stop Eb
- Heritage - Zum Steeles Station Stop Eb
- Hereford - Zum Steeles Station Stop Eb
- Mississauga Road - Zum Steeles Station Stop Eb
- Financial - Zum Steeles Station Stop Eb
- Steeles Ave W E/Of Mavis Rd
- Sheridan College
- Malta - Zum Steeles Station Stop Eb
- Gateway Terminal at Shoppers World
- Kennedy - Zum Steeles Station Stop Eb
- Steeles Ave At First Gulf Blvd
- Tomken - Zum Steeles Station Stop Eb
- Dixie - Zum Steeles Station Stop Eb
- Bramalea Go Station-Route 11/11a/511/A/C Eb Stop
- Torbram - Zum Steeles Station Stop Eb
- Steeles Ave At Airport Rd
- Steeles Ave At Goreway Dr
- Finch - Zum Steeles Station Stop Eb
- Darcel - Zum Steeles Stop
- Finch Ave At Humber College Blvd
- Humber College Terminal- Zum Steeles 511/511a/511c

**511 bus Time Schedule**

511 Zum Steeles Eastbound Route Timetable:

Sunday	4:23 AM - 10:20 PM
Monday	4:23 AM - 10:20 PM
Tuesday	4:23 AM - 11:45 PM
Wednesday	4:23 AM - 11:45 PM
Thursday	4:23 AM - 11:45 PM
Friday	4:23 AM - 11:45 PM
Saturday	4:23 AM - 10:20 PM

**511 bus info**

**Direction:** 511 Zum Steeles Eastbound

**Stops:** 23

**Trip Duration:** 62 min

**Line Summary:**



**Direction: 511 Zum Steeles Westbound**

23 stops

[VIEW LINE SCHEDULE](#)

- Humber College Terminal- Zum Steeles  
511/511a/511c
- Finch Ave W/Of Humber College Blvd
- Finch Ave At Longo Circle
- Finch - Zum Steeles Station Stop Wb
- Steeles Ave At Goreway Dr
- Steeles Ave At Airport Rd
- Torbram - Zum Steeles Station Stop Wb
- Bramalea Go Station-Route 11/11a/511/A/C Wb  
Stop
- Dixie - Zum Steeles Station Stop Wb
- West Drive - Zum Steeles Station Stop Wb
- Rutherford - Zum Steeles Station Stop Wb
- Steeles Ave At Kennedy Rd
- Gateway Terminal at Shoppers World
- Mcmurphy - Zum Steeles Station Stop Wb
- Sheridan College
- Chinguacousy - Zum Steeles Station Stop Wb
- Financial - Zum Steeles Station Stop Wb
- Mississauga Road - Zum Steeles Station Stop Wb
- Rivermont - Zum Steeles Station Stop Wb
- Heritage - Zum Steeles Station Stop Wb
- Winston Churchill - Zum Steeles Station Stop Wb
- Argentia - Zum Steeles Stop Wb
- Lisgar Go Station

**511 bus Time Schedule**

511 Zum Steeles Westbound Route Timetable:

Sunday	5:35 AM - 9:22 PM
Monday	5:35 AM - 9:22 PM
Tuesday	5:24 AM - 10:36 PM
Wednesday	12:36 AM - 10:36 PM
Thursday	12:36 AM - 10:36 PM
Friday	12:36 AM - 10:36 PM
Saturday	12:36 AM - 9:22 PM

**511 bus Info**

**Direction:** 511 Zum Steeles Westbound

**Stops:** 23

**Trip Duration:** 60 min

**Line Summary:**



**Direction: 511a Zum Steeles East**

13 stops

[VIEW LINE SCHEDULE](#)

- Gateway Terminal at Shoppers World
- Kennedy - Zum Steeles Station Stop Eb
- Steeles Ave At First Gulf Blvd
- Tomken - Zum Steeles Station Stop Eb
- Dixie - Zum Steeles Station Stop Eb
- Bramalea Go Station-Route 11/11a/511/A/C Eb Stop
- Torbram - Zum Steeles Station Stop Eb
- Steeles Ave At Airport Rd
- Steeles Ave At Goreway Dr
- Finch - Zum Steeles Station Stop Eb
- Darcel - Zum Steeles Stop
- Finch Ave At Humber College Blvd
- Humber College Terminal- Zum Steeles 511/511a/511c

**511 bus Time Schedule**

511a Zum Steeles East Route Timetable:

Sunday	7:04 AM - 9:44 PM
Monday	7:04 AM - 9:44 PM
Tuesday	7:04 AM - 11:57 PM
Wednesday	12:17 AM - 11:57 PM
Thursday	12:17 AM - 11:57 PM
Friday	12:17 AM - 11:57 PM
Saturday	12:17 AM - 10:15 PM

**511 bus Info**

**Direction:** 511a Zum Steeles East

**Stops:** 13

**Trip Duration:** 35 min

**Line Summary:**



**Direction: 511 a Zum Steeles West**

13 stops

[VIEW LINE SCHEDULE](#)

- Humber College Terminal- Zum Steeles  
511/511a/511c
- Finch Ave W/Of Humber College Blvd
- Finch Ave At Longo Circle
- Finch - Zum Steeles Station Stop Wb
- Steeles Ave At Goreway Dr
- Steeles Ave At Airport Rd
- Torbram - Zum Steeles Station Stop Wb
- Bramalea Go Station-Route 11/11a/511/A/C Wb  
Stop
- Dixie - Zum Steeles Station Stop Wb
- West Drive - Zum Steeles Station Stop Wb
- Rutherford - Zum Steeles Station Stop Wb
- Steeles Ave At Kennedy Rd
- Gateway Terminal at Shoppers World

**511 bus Time Schedule**

511a Zum Steeles West Route Timetable:

Sunday	7:25 AM - 9:45 PM
Monday	7:25 AM - 9:45 PM
Tuesday	7:25 AM - 11:56 PM
Wednesday	12:16 AM - 11:56 PM
Thursday	12:16 AM - 11:56 PM
Friday	12:16 AM - 11:56 PM
Saturday	12:16 AM - 10:40 PM

**511 bus Info**

**Direction:** 511 a Zum Steeles West

**Stops:** 13

**Trip Duration:** 35 min

**Line Summary:**





**Direction: 511c Zum Steeles East**

15 stops

[VIEW LINE SCHEDULE](#)

- Sheridan College
- Malta - Zum Steeles Station Stop Eb
- Gateway Terminal at Shoppers World
- Kennedy - Zum Steeles Station Stop Eb
- Steeles Ave At First Gulf Blvd
- Tomken - Zum Steeles Station Stop Eb
- Dixie - Zum Steeles Station Stop Eb
- Bramalea Go Station-Route 11/11a/511/A/C Eb Stop
- Torbram - Zum Steeles Station Stop Eb
- Steeles Ave At Airport Rd
- Steeles Ave At Goreway Dr
- Finch - Zum Steeles Station Stop Eb
- Darcel - Zum Steeles Stop
- Finch Ave At Humber College Blvd
- Humber College Terminal- Zum Steeles 511/511a/511c

**511 bus Time Schedule**

511c Zum Steeles East Route Timetable:

Sunday	Not Operational
Monday	Not Operational
Tuesday	5:11 AM - 6:59 PM
Wednesday	5:11 AM - 6:59 PM
Thursday	5:11 AM - 6:59 PM
Friday	5:11 AM - 6:59 PM
Saturday	Not Operational

**511 bus Info**

**Direction:** 511c Zum Steeles East

**Stops:** 15

**Trip Duration:** 50 min

**Line Summary:**



**Direction: 511c Zum Steeles West**

15 stops

[VIEW LINE SCHEDULE](#)

- Humber College Terminal- Zum Steeles  
511/511a/511c
- Finch Ave W/Of Humber College Blvd
- Finch Ave At Longo Circle
- Finch - Zum Steeles Station Stop Wb
- Steeles Ave At Goreway Dr
- Steeles Ave At Airport Rd
- Torbram - Zum Steeles Station Stop Wb
- Bramalea Go Station-Route 11/11a/511/A/C Wb  
Stop
- Dixie - Zum Steeles Station Stop Wb
- West Drive - Zum Steeles Station Stop Wb
- Rutherford - Zum Steeles Station Stop Wb
- Steeles Ave At Kennedy Rd
- Gateway Terminal at Shoppers World
- Mcmurphy - Zum Steeles Station Stop Wb
- Sheridan College

**511 bus Time Schedule**

511c Zum Steeles West Route Timetable:

Sunday	Not Operational
Monday	Not Operational
Tuesday	6:30 AM - 6:14 PM
Wednesday	6:30 AM - 6:14 PM
Thursday	6:30 AM - 6:14 PM
Friday	6:30 AM - 6:14 PM
Saturday	Not Operational

**511 bus Info**

**Direction:** 511c Zum Steeles West

**Stops:** 15

**Trip Duration:** 47 min

**Line Summary:**



511 bus time schedules and route maps are available in an offline PDF at [moovitapp.com](https://moovitapp.com). Use the [Moovit App](#) to see live bus times, train schedule or subway schedule, and step-by-step directions for all public transit in Toronto.

[About Moovit](#) • [MaaS Solutions](#) • [Supported Countries](#) • [Mooviter Community](#)

© 2022 Moovit - All Rights Reserved

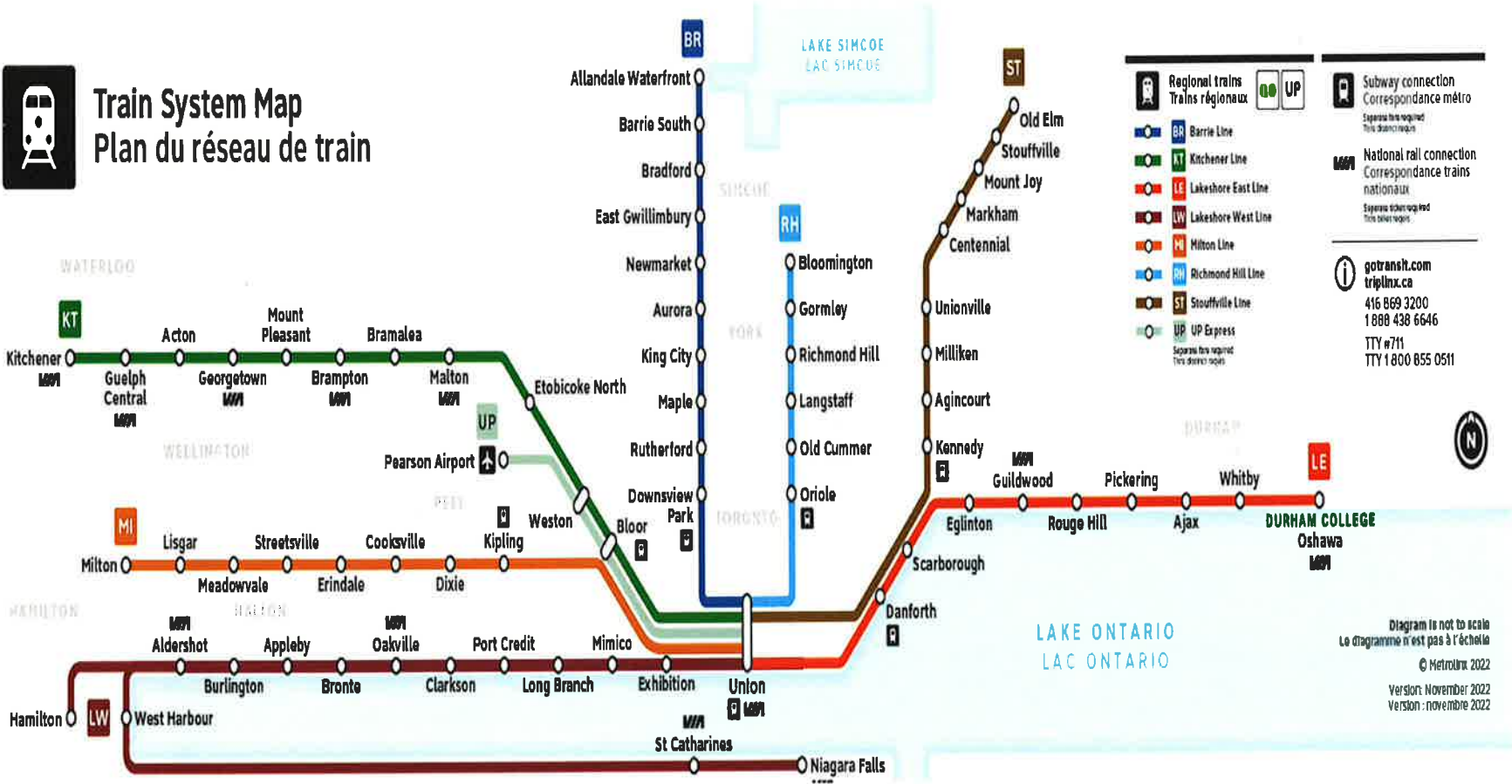
## Check Live Arrival Times





# Train System Map

## Plan du réseau de train



**Regional trains**  
Trains régionaux

- BR Barrie Line
- KT Kitchener Line
- LE Lakeshore East Line
- LW Lakeshore West Line
- MI Milton Line
- RH Richmond Hill Line
- ST Stouffville Line
- UP UP Express

**Subway connection**  
Correspondance métro

**National rail connection**  
Correspondance trains nationaux

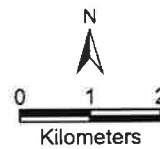
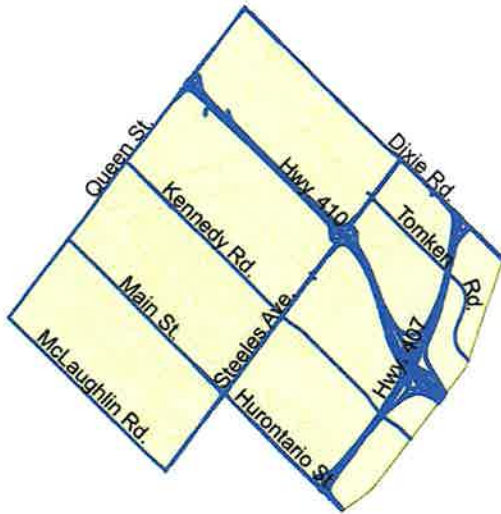
**gotransit.com**  
triplinx.ca  
416 869 3200  
1 888 438 6646  
TTY #711  
TTY 1 800 855 0511

Diagram is not to scale  
Le diagramme n'est pas à l'échelle

© Metrolinx 2022  
Version: November 2022  
Version: novembre 2022

**Appendix C**  
**2016 TTS Data (City of Brampton, Ward 3)**

CITY OF BRAMPTON  
WARD 3



WARD 3

HOUSEHOLD CHARACTERISTICS

Households	Dwelling Type			Household Size					Number of Available Vehicles					Household Averages				
	House	Townhouse	Apartment	1	2	3	4	5+	0	1	2	3	4+	Persons	Workers	Drivers	Vehicles	Trips/Day
17,700	33%	8%	59%	26%	31%	18%	15%	10%	14%	46%	31%	6%	3%	2.6	1.3	1.7	1.4	4.7

POPULATION CHARACTERISTICS

Population	Age							Daily Trips per Person (age 11+)	Daily Work Trips per Worker	Population	Employment Type			Student	Licensed	Transit Pass
	0-10	11-15	16-25	26-45	46-64	65+	Median				Full Time	Part Time	At Home			
											Male					
45,400	12%	5%	14%	27%	27%	15%	39.8	2.1	0.77	22,200	45%	6%	3%	22%	71%	26%
										23,200	32%	9%	3%	19%	61%	27%

TRIPS MADE BY RESIDENTS OF CITY OF BRAMPTON - WARD 3

Time Period	Trips	% 24hr	Trip Purpose				Mode of Travel						Median Trip Length (km)			
			HB-W	HB-S	HB-D	N-HB	Driver	Pass.	Transit	GO Train	Walk & Cycle	Other	Driver	Pass.	Transit	GO Train
6-9 AM	19,900	24.1%	52%	18%	20%	9%	65%	11%	10%	2%	9%	3%	8.0	3.9	8.4	29.2
24 Hrs	82,800		37%	11%	38%	14%	65%	13%	11%	1%	7%	3%	6.2	3.6	7.2	29.5

TRIPS MADE TO CITY OF BRAMPTON - WARD 3 - BY RESIDENTS OF THE TTS AREA

Time Period	Trips	% 24 hr	Trip Purpose				Mode of Travel						Median Trip Length (km)			
			Work	School	Home	Other	Driver	Pass.	Transit	GO Train	Walk & Cycle	Other	Driver	Pass.	Transit	GO Train
6-9 AM	33,900	29%	63%	17%	3%	16%	70%	15%	4%	*	5%	6%	9.4	5.0	5.5	*
24 Hrs	117,200		30%	5%	30%	34%	69%	16%	7%	0%	4%	3%	7.0	4.7	5.8	29.5