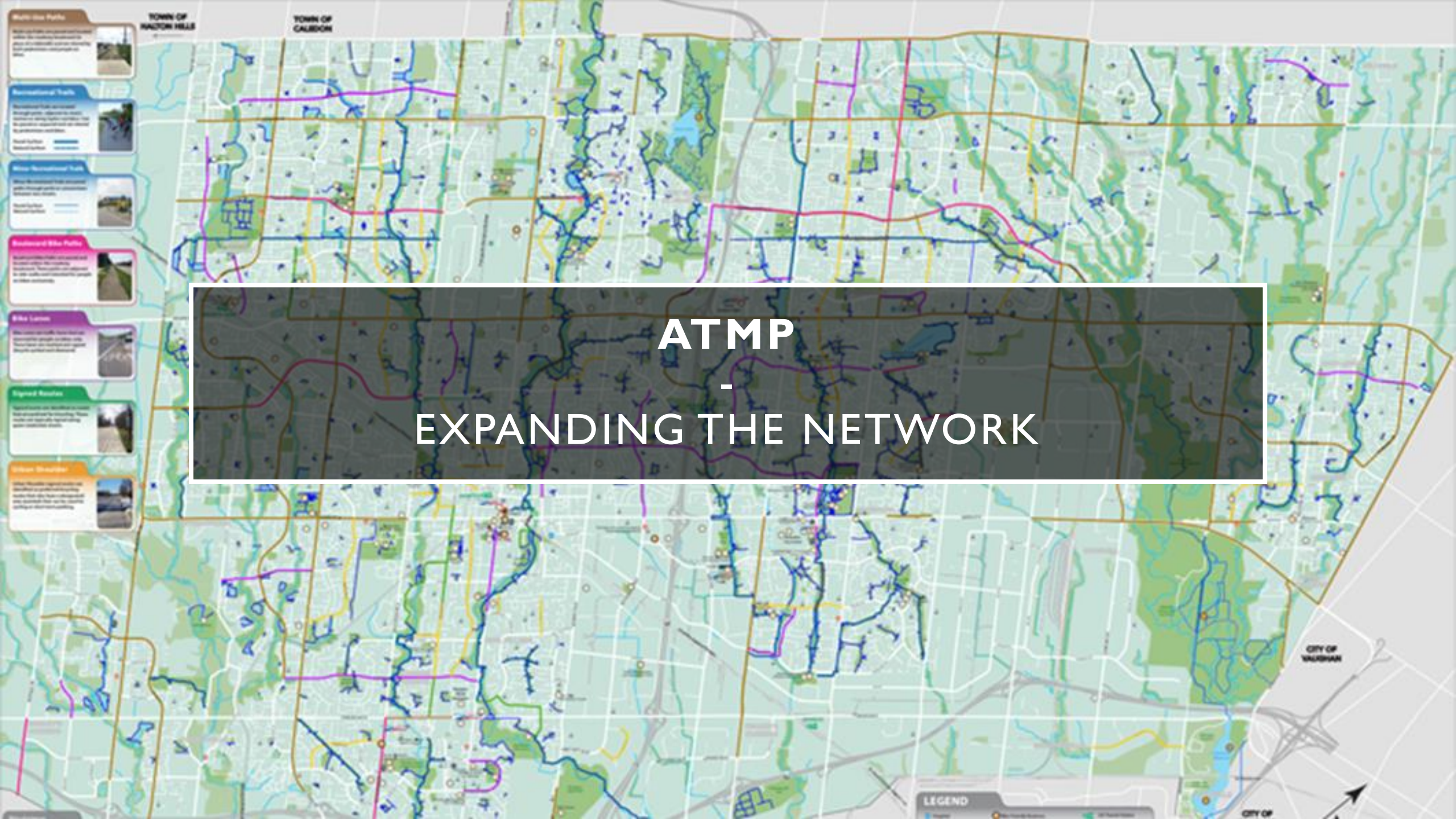


ACTIVE
TRANSPORTATION
ANNUAL REPORT
★
COMMUNITY RIDES
★
BIKE THE CREEK

- Committee of Council
- Dayle Laing, BikeBrampton
- March 8, 2023



BikeBrampton.ca
Biking in Brampton
Builds our Community



ATMP
-
EXPANDING THE NETWORK

- Greenway Paths**
Greenway paths are multi-use paths that provide a safe and scenic route for walking, jogging, and cycling. They are typically located along waterways, parks, and other natural areas.
- Recreational Trails**
Recreational trails are paths that are primarily used for recreation, such as hiking, jogging, and cycling. They are often located in parks, forests, and other natural areas.
- Multi-Use Paths**
Multi-use paths are paths that are designed to be used by a variety of people, including walkers, joggers, and cyclists. They are typically located in parks and other recreational areas.
- Bicycle Paths**
Bicycle paths are paths that are specifically designed for use by cyclists. They are typically located in parks, forests, and other recreational areas.
- Bike Lanes**
Bike lanes are lanes on roads that are specifically designated for use by cyclists. They are typically located on roads that have a high volume of traffic.
- Signed Routes**
Signed routes are routes that are marked with signs to indicate that they are suitable for use by cyclists. They are typically located on roads that have a high volume of traffic.

LEGEND

CITY OF VALDIAH

CITY OF

SERVING
DIVERSE
POPULATION
OF COMMUTER
&
RECREATIONAL
CYCLISTS

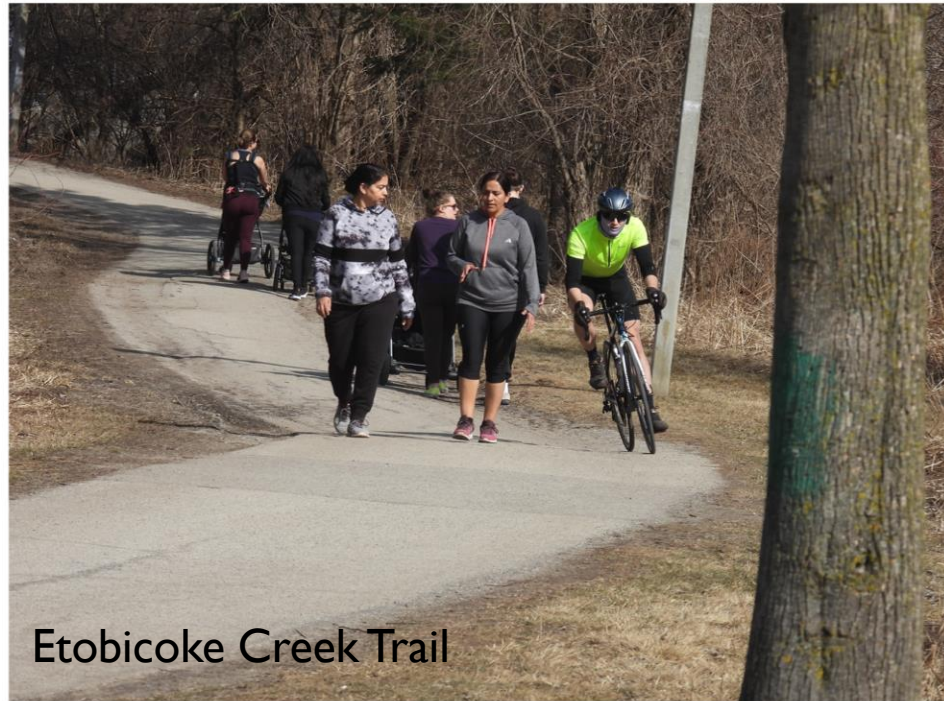


Different Spokes

Brampton Bike Hub

AT INFRASTRUCTURE

- Sidewalks = pedestrians
- Multi-use paths = pedestrians & cyclists sharing
- On-street infrastructure (bike lanes) **NECESSARY TO MANAGE CAPACITY**



Etobicoke Creek Trail



Vodden Street bike lanes

INTERSECTION DESIGN CONSISTENCY





PARKING IN BIKE LANES

Forces cyclists (and kids riding to this school) out into the vehicle lane



CROSSRIDE SIGNALS

- Crossrides are great for multi-use path intersections
- Signal timing design should be in line with adjacent municipalities
- We should not have to stop and push beg button to cross, then have signal turn yellow within a couple of seconds
- Bike signal heads should synchronize with vehicle traffic



CURB DEPRESSIONS = ACCESSIBILITY

COMMUNITY RIDES

- 14 Themed rides for 2023
- Different Spokes Bike Month
- Library Appreciation
- Downtown Heritage
- Public Art
- Lakes & Bridges
- Heart Lake Nature
- Chinguacousy Park
- Claireville Critter
- Mount Pleasant Transit
- Sheridan
- Tour the Trees (with Parks)
- Mississauga Connector
- Scones & Valleys – Caledon

RIDE A BIKE. DISCOVER YOUR CITY.

www.brampton.ca/communityrides



Bike the Creek

June 10, 2023

9th annual cycling event
through Peel Region's
urban roads and trails.



For more information and to register visit trca.ca/bike-the-creek

In collaboration with:



BIKE THE CREEK



PEEL-WIDE SIGNATURE CYCLING EVENT

- 9th annual signature bike ride
- FREE event aimed at encouraging people of all ages to discover joy of cycling
- Attracts over **1,350** cycling enthusiasts from Brampton & GTHA (Cycle Tourism)
- Promoted to **800** people at ‘Experience Brampton’ booth at The Great Outdoor Adventure Show
- “Resilient Communities”
- Cycling leads to strong, healthy, vibrant, sustainable communities
- Aligns with: Active Transportation Master Plan, 2040 Vision, Climate Emergency
- Zero-waste event



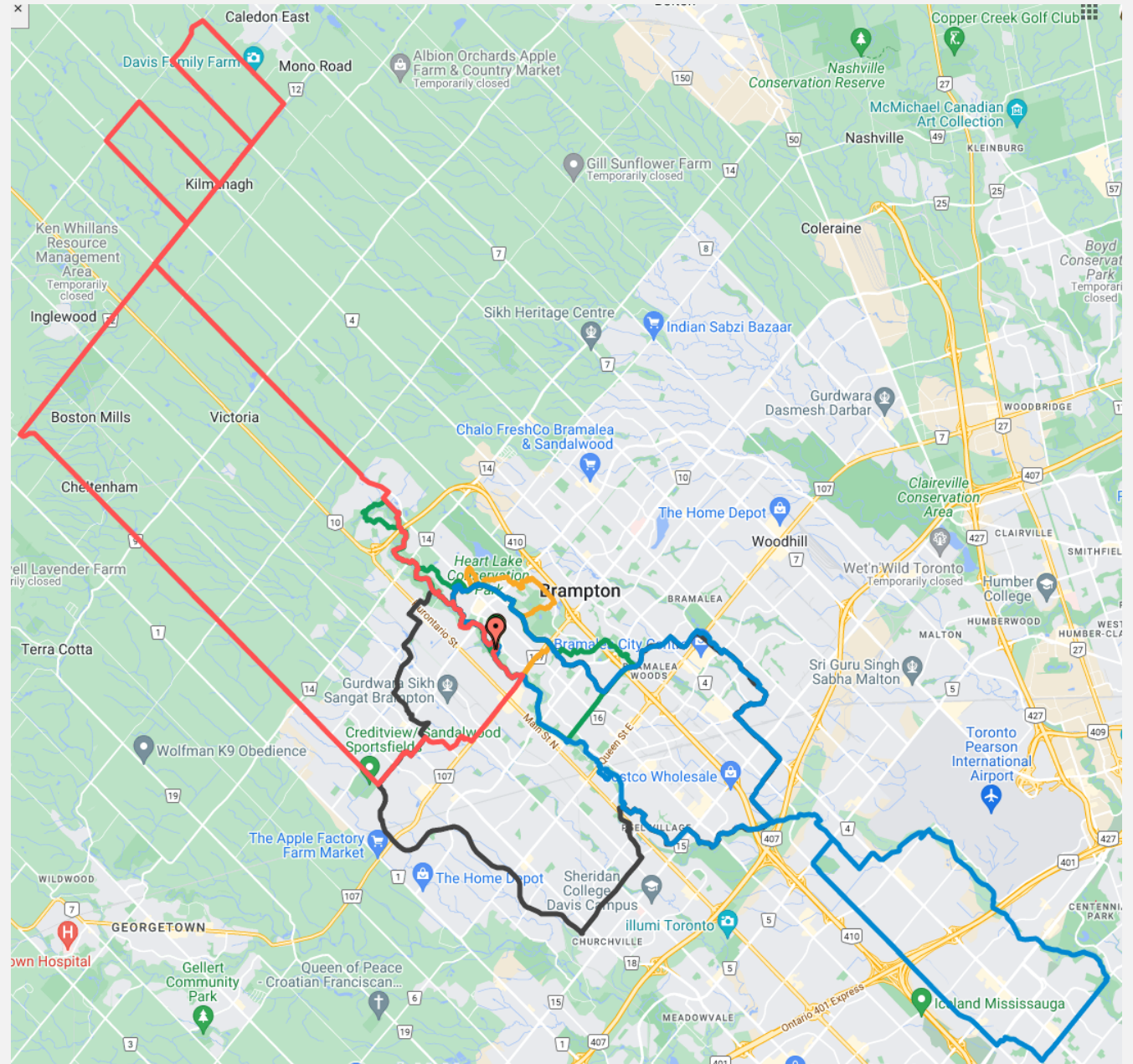
BikeBrampton.ca
Biking in Brampton
Builds our Community



Toronto and Region
Conservation
Authority

6 ROUTES

- Inclusivity, Diversity, Equality...
- New routes this year
- 6 km Family Ride
- 12 km Family Ride
- 30 km Nature Ride
- 50 km Brampton City Ride
- 61 km Brampton Bramalea Mississauga Ride
- 44 & 67 km Caledon Town Ride



#BIKETHECREEK23 PROMOTION

- Councillor Newsletters
- Social Media
- City Website
- Pre-event Signage
- Jerseys & T-shirts for purchase



BTC DIGNITARY RIDES - YOU'RE INVITED!

