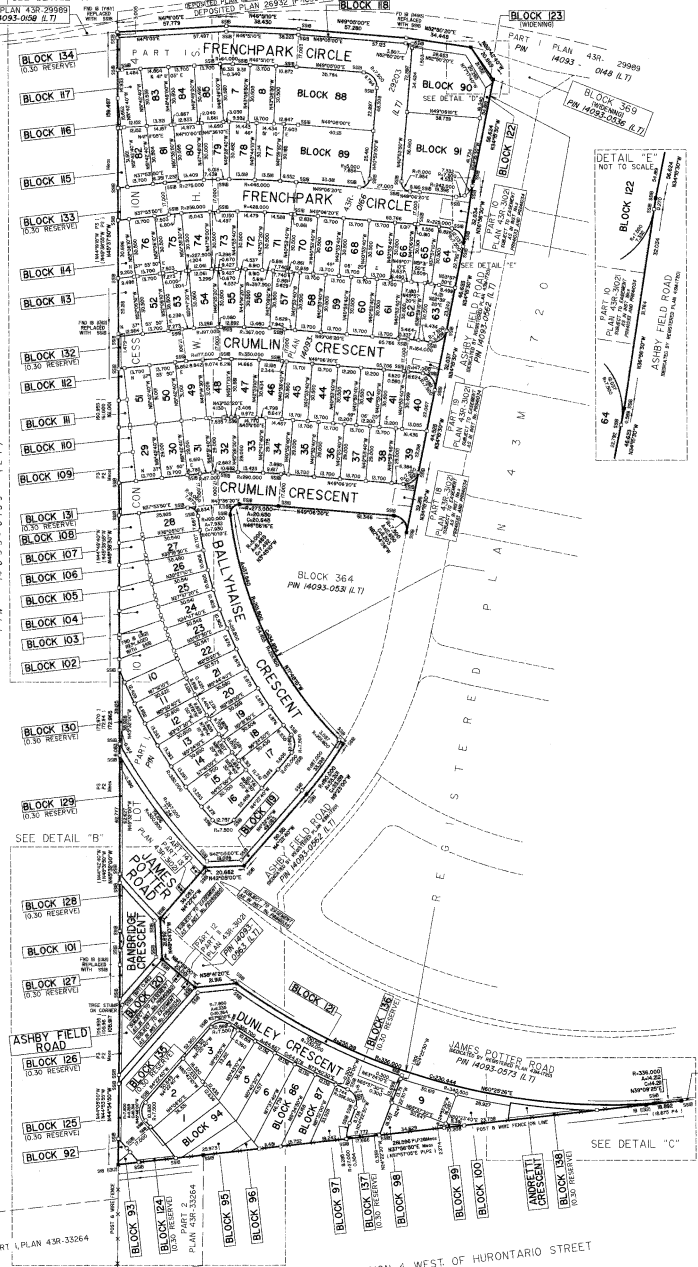
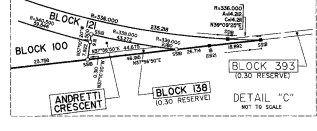
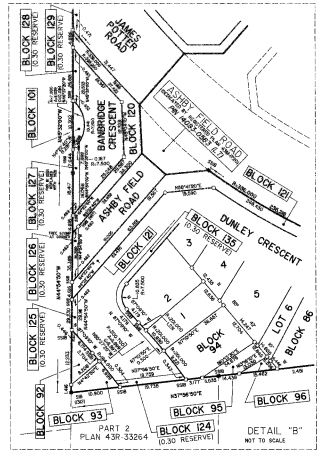
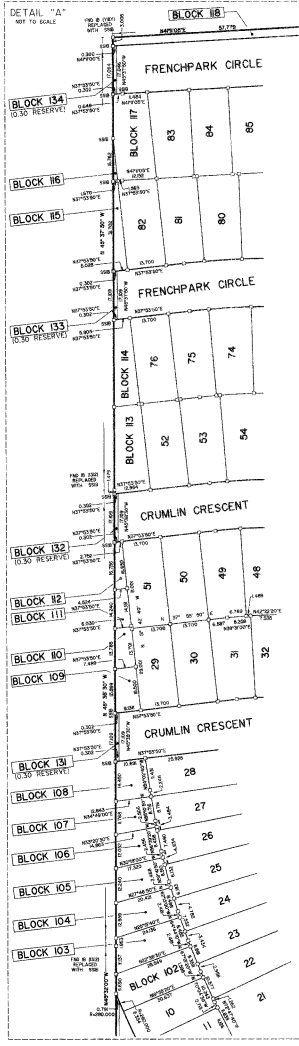


CURVE TABLE				CURVE TABLE			
LOT/BLOCK	RADIUS	ARC	CHORD	LOT/BLOCK	RADIUS	ARC	CHORD
LOT 1	250.000	10.883	9.877	LOT 71	287.000	0.881	11.841
LOT 2	250.000	10.883	9.877	LOT 72	287.000	0.881	11.841
LOT 3	250.000	10.883	9.877	LOT 73	287.000	0.881	11.841
LOT 4	250.000	10.883	9.877	LOT 74	287.000	0.881	11.841
LOT 5	250.000	10.883	9.877	LOT 75	287.000	0.881	11.841
LOT 6	250.000	10.883	9.877	LOT 76	287.000	0.881	11.841
LOT 7	250.000	10.883	9.877	LOT 77	287.000	0.881	11.841
LOT 8	250.000	10.883	9.877	LOT 78	287.000	0.881	11.841
LOT 9	250.000	10.883	9.877	LOT 79	287.000	0.881	11.841
LOT 10	250.000	10.883	9.877	LOT 80	287.000	0.881	11.841
LOT 11	250.000	10.883	9.877	LOT 81	287.000	0.881	11.841
LOT 12	250.000	10.883	9.877	LOT 82	287.000	0.881	11.841
LOT 13	250.000	10.883	9.877	LOT 83	287.000	0.881	11.841
LOT 14	250.000	10.883	9.877	LOT 84	287.000	0.881	11.841
LOT 15	250.000	10.883	9.877	LOT 85	287.000	0.881	11.841
LOT 16	250.000	10.883	9.877	LOT 86	287.000	0.881	11.841
LOT 17	250.000	10.883	9.877	LOT 87	287.000	0.881	11.841
LOT 18	250.000	10.883	9.877	LOT 88	287.000	0.881	11.841
LOT 19	250.000	10.883	9.877	LOT 89	287.000	0.881	11.841
LOT 20	250.000	10.883	9.877	LOT 90	287.000	0.881	11.841
LOT 21	250.000	10.883	9.877	LOT 91	287.000	0.881	11.841
LOT 22	250.000	10.883	9.877	LOT 92	287.000	0.881	11.841
LOT 23	250.000	10.883	9.877	LOT 93	287.000	0.881	11.841
LOT 24	250.000	10.883	9.877	LOT 94	287.000	0.881	11.841
LOT 25	250.000	10.883	9.877	LOT 95	287.000	0.881	11.841
LOT 26	250.000	10.883	9.877	LOT 96	287.000	0.881	11.841
LOT 27	250.000	10.883	9.877	LOT 97	287.000	0.881	11.841
LOT 28	250.000	10.883	9.877	LOT 98	287.000	0.881	11.841
LOT 29	250.000	10.883	9.877	LOT 99	287.000	0.881	11.841
LOT 30	250.000	10.883	9.877	LOT 100	287.000	0.881	11.841

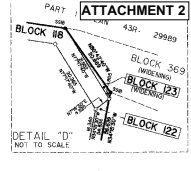


WEST HALF OF LOT 10 CONCESSION 4 WEST OF HURONTARIO STREET  
 PART 1 PLAN 43R-23403  
 P.I.N. 14093-0159 (L7)



PART 1 PLAN 43R-33264

EAST HALF OF LOT 9, CONCESSION 4 WEST OF HURONTARIO STREET  
 PART 1 PLAN 43R-29240  
 P.I.N. 14093-0164 (L7)



PLAN 43M-12111  
 I CERTIFY THAT THIS PLAN IS REGISTERED IN THE LAND REGISTRY OFFICE FOR THE LAND TITLES DIVISION OF PEEL (NO-43) AT 12:21 O'CLOCK ON THE 12th DAY OF July 2010  
 AND ENTERED IN THE PARCEL REGISTER FOR PROPERTY IDENTIFIER 14093-0166  
 AND REQUIRED CONSENTS ARE REGISTERED AS PLAN DOCUMENT NO. PR1578899  
 LAND REGISTRAR

THE PLAN CONVEYS ALL OF THE INTERESTS IN THE LAND SHOWN HEREIN SUBJECT TO EASEMENTS AS NOTED IN FOOTNOTES. THE INTERESTS IN THE LAND SHOWN HEREIN ARE SUBJECT TO EASEMENTS AS NOTED IN FOOTNOTES. THE INTERESTS IN THE LAND SHOWN HEREIN ARE SUBJECT TO EASEMENTS AS NOTED IN FOOTNOTES. THE INTERESTS IN THE LAND SHOWN HEREIN ARE SUBJECT TO EASEMENTS AS NOTED IN FOOTNOTES.

SCALE 1:500  
 METRIC DISTANCES SHOWN ON THIS PLAN ARE IN METRES AND CAN BE CONVERTED TO FEET BY DIVIDING BY 0.3048  
 J.D. BARNES LIMITED

OWNER'S CERTIFICATE  
 I CERTIFY THAT:  
 1. LOTS 1 TO 100 WITH INCLUSIVE BLOCKS 88 TO 122 BEING SHOWN ON THE ATTACHED ORIGINAL SURVEYING PLAN ARE A RESULT OF THE SUBDIVISION OF THE LAND SHOWN ON THE ATTACHED ORIGINAL SURVEYING PLAN AND HAVE BEEN LAID OUT IN ACCORDANCE WITH OUR INSTRUCTIONS.  
 2. THE STREETS ARE HEREBY REFERRED TO THE CORPORATION OF THE CITY OF BRAMPTON AS PUBLIC HIGHWAYS.  
 3. THE STREET DIMENSIONS SHOWN ON THIS PLAN ARE IN METRES AND CAN BE CONVERTED TO FEET BY DIVIDING BY 0.3048.  
 DATED THIS 12th DAY OF July 2010.  
 CREWEN DEVELOPMENT INC.  
 SHARON MAZITA PRESIDENT  
 I HAVE THE AUTHORITY TO SIGN AND CORPORAION

NOTES  
 1. DIMENSIONS SHOWN ARE GRID BEARINGS AND ARE DERIVED FROM STATION OPERATIONS E 34884 007 N 882329 175  
 AND STATION OPERATIONS E 34884 007 N 882329 175  
 AND ARE REFERRED TO THE CENTRAL MERIDIAN BY WEST LONGITUDE, ELEV. FT. 160.85  
 2. DISTANCES ARE SHOWN IN METRES AND MAY BE CONVERTED TO FEET BY DIVIDING BY THE CONVERSION FACTOR OF 0.3048  
 3. DIMENSIONS SHOWN ARE GRID BEARINGS AND ARE DERIVED FROM STATION OPERATIONS E 34884 007 N 882329 175  
 AND STATION OPERATIONS E 34884 007 N 882329 175  
 AND ARE REFERRED TO THE CENTRAL MERIDIAN BY WEST LONGITUDE, ELEV. FT. 160.85  
 4. DISTANCES ARE SHOWN IN METRES AND MAY BE CONVERTED TO FEET BY DIVIDING BY THE CONVERSION FACTOR OF 0.3048

MUNICIPAL APPROVAL  
 2010-00008  
 APPROVED BY THE CITY OF BRAMPTON  
 JUN 18 2010  
 CITY OF BRAMPTON  
 PLANNING, DEVELOPMENT AND COMMUNITY SERVICES DEPARTMENT  
 CORPORATION OF THE CITY OF BRAMPTON

SURVEYOR'S CERTIFICATE  
 I CERTIFY THAT:  
 1. THIS SURVEY AND PLAN ARE CORRECT AND IN ACCORDANCE WITH THE SURVEY ACT, THE SURVEYORS ACT, THE LAND TITLES ACT AND THE REGULATIONS MADE UNDER THEM.  
 2. THE SURVEY WAS COMPLETED ON THE 12th DAY OF July, 2010.  
 DATE: MAY 7, 2010  
 S.I. BARNES  
 CHIEF LAND SURVEYOR

J.D. BARNES  
 LAND INFORMATION SPECIALISTS  
 1 MILLIKEN AVENUE, SUITE 100  
 MISSISSAUGA, ONTARIO L4X 1L7  
 TEL: (905) 872-0500 FAX: (905) 872-0501  
 WWW.JDBARNES.COM