



URBANTRANS
Engineering Solutions Inc.

Parking Justification Study

Existing Commercial Development

26 Bramsteele Road
City of Brampton, ON

UT-22-076

March 22, 2023



URBANTRANS
Engineering Solutions Inc.

UrbanTrans Engineering Solutions Inc.
3275 Markham Road, Suite 146
Markham ON L3E 0H9
Tel: 437-236-7085
annosan@uteng.ca

March 31, 2023

2466482 Ontario Inc.
C/O Glen Schnarr & Associates
700-10 Kingsbridge Garden Circle
Mississauga ON L5R 3K6

**RE: Parking Justification Study
Existing Commercial Development
26 Bramsteele Road, City of Brampton
Reference No.: UT-22-076**

UrbanTrans Engineering Solutions Inc. was retained by 2466482 Ontario Inc. (the "Client") to complete this Parking Justification Study in support of a Minor Variance application. The proposed development is located at the northeast corner of Bramsteele Road and Hale Road intersection municipally known as 26 Bramsteele Road, in the City of Brampton.

The subject lands currently provide a one-storey commercial building comprising of a motor vehicle sales, auto repair shop and a restaurant with approximately 365 m², 353 m² and 250 m² of gross floor area (GFA), respectively. Based on discussion with the client, the purpose of the minor variance application is to renew the existing uses that were temporarily permitted while removing the restaurant and replacing it with the motor vehicle repair shop. As such, a total of 365 m² and 602 m² of gross floor area (GFA) for motor vehicle sales and motor vehicle repair shop, respectively are proposed. A total of 39 parking spaces are proposed on site including six (6) tandem parking spaces.

The Parking Justification Study concludes that the proposed parking supply of 39 parking spaces including six (6) tandem parking spaces is reasonable and justified based on the justifications provided in this Study. It is understood that the City of Brampton is the Municipal authority to review and approve the Parking Justification Study for the proposed development.

We trust the enclosed comply with your requirements. Should you have any questions, please do not hesitate to contact the undersigned.

Kind Regards,
UrbanTrans Engineering Solutions Inc.

Signature



Engineer's Seal

Annosan Srikantha, P.Eng.
President

DISCLAIMER

This document entitled '26 Bramsteele Road - Parking Justification Study' or named part thereof (the "project") was prepared by UrbanTrans Engineering Solutions Inc. ("UrbanTrans") for the account of 2466482 Ontario Inc. (the "Client"). This document is confidential and prepared solely for approval and commenting municipalities and their agencies in their review and approval of this project. The materials in this report reflect the best judgement based on the information available at the time the document was issued. Any reliance on this document by any third party is strictly prohibited and UrbanTrans accepts no responsibility for damages, if any, suffered by any third party by reason of decisions made or actions based on this document.

RECORD OF REVISIONS

Revision	Date	Identification	Description
0	January 17, 2023	Final Report	Final Submission
1	March 22, 2023	Revised Site Plan	Second Submission

TABLE OF CONTENTS

1.0	INTRODUCTION	1
1.1	Background	1
1.2	Objective.....	1
1.3	Development Proposal.....	1
2.0	EXISTING CONDITIONS.....	3
2.1	Road Network	3
2.2	Transit Network	4
2.3	Active Transportation Network.....	5
2.3.1	Sidewalk Network	5
2.3.2	Bicycle Network	6
3.0	TRANSPORATION DEMAND MANAGEMENT (TDM).....	7
3.1	Smart Commute	7
3.2	TDM Implementation.....	8
4.0	Transportation Planning Context in the Area.....	9
4.1	City of Brampton Official Plan (September 2020)	9
5.0	PARKING REQUIREMENT	10
5.1	Zoning By-law Review	10
5.2	ITE Parking Generation Manual 5 th Edition.....	10
5.3	Parking Utilization Survey	12

LIST OF TABLES

- Table 1: Existing Building Occupancies
- Table 2: Area Transit Context
- Table 3: TDM/ AT Recommendations
- Table 4: City of Brampton Zoning By-law No. 270-2004 Vehicle Parking Requirements
- Table 5: ITE Parking Generation 5th Editions (Land Use Average Peak Parking Demand)
- Table 6: ITE Parking Generation 5th Editions (Time of Day Distribution Average Peak Parking Demand)
- Table 7: Parking Utilization Survey – 26 Bramsteele Road, City of Brampton

LIST OF FIGURES

- Figure 1 - Site Location
- Figure 2 - Existing Site Plan
- Figure 3 - Brampton Transit System Map
- Figure 4 - Transit Route Frequency Guide
- Figure 5 - City of Brampton Cycling Map

LIST OF APPENDICES

- Appendix A: Existing Site Plan
- Appendix B: Existing Transit Routes
- Appendix C: 2016 TTS Data (City of Brampton, Ward 3)

1.0 INTRODUCTION

1.1 Background

UrbanTrans Engineering Solutions Inc. was retained by 2466482 Ontario Inc. (the “Client”) to complete this Parking Justification Study in support of a Minor Variance application.

1.2 Objective

The study will assess the following components:

- Determine whether the existing shared commercial uses vehicle parking supply can sufficiently accommodate the peak parking demands of the existing commercial uses within the existing buildings.
- Undertake parking utilization surveys at the subject site to derive existing peak parking demands for the site. Furthermore, UrbanTrans will recommend reduced parking rates and identify alternative strategies that can sufficiently accommodate the peak parking demand/requirement of the proposed development (if applicable).

1.3 Development Proposal

The proposed development is located at the northeast corner of Bramsteele Road and Hale Road intersection municipally known as 26 Bramsteele Road, in the City of Brampton.

The subject lands currently provide a one-storey commercial building comprising of a motor vehicle sales, auto repair shop and a restaurant with approximately 365 m², 353 m² and 250 m² of gross floor area (GFA), respectively. Based on discussion with the client, the purpose of the minor variance application is to renew the existing uses that were temporarily permitted while removing the restaurant and replacing it with the motor vehicle repair shop. As such, a total of 365 m² and 602 m² of gross floor area (GFA) for motor vehicle sales and motor vehicle repair shop, respectively are proposed. A total of 39 parking spaces are proposed on site including six (6) tandem parking spaces.

The location of the proposed development is illustrated in **Figure 1**. The existing site plan is illustrated in **Figure 2**; **Appendix A** also provides a larger scale version of the existing site plan.

Figure 1 - Site Location



Source: Google Map

Figure 2 - Existing Site Plan



Source: Glen Schnarr & Associates Inc.

Table 1 details the proposed tenant site operations and GFA.

Table 1: Existing Building Occupancies

Land Use	Tenant	GFA (sq.m.)	GFA (sq.ft.)	Hours of Operation
Motor Vehicle Repair Shop	Collision Linx	602	6,479	Monday to Friday (9am-5pm)
				Saturday (10am-2pm)
				Sunday (Closed)
Motor Vehicle Sales Shop	ACEZ Auto Sales	365	3,929	Monday to Saturday (8:30am-7pm)
				Sunday (10am-1pm)

2.0 EXISTING CONDITIONS

This section documents the transportation network in the study area in 2023, including existing roadways, transit services, active transportation network, traffic control measures, and intersection performances.

2.1 Road Network

To provide clarity throughout this report, Rutherford Road South and Hale Road have been given a north-south orientation, and Steeles Avenue East and Bramsteele Road have been given an east-west orientation. On this basis, the characteristics of the roads and intersections within the vicinity of the subject site are described below:

- **Rutherford Road South** is a minor arterial road under the jurisdiction of the City of Brampton. It operates as a 4-lane cross section with exclusive left and right turn lanes at the signalized Steeles Avenue East intersection and exclusive left turn lanes at the signalized Bramsteele Road intersection. Rutherford Road South maintains a posted speed limit of 60 km/hr.
- **Steeles Avenue East** is a major arterial road under the jurisdiction of the Region of Peel. It operates as a 4-lane cross-section with exclusive left and right turn lanes at the signalized Rutherford Road South intersection. Steeles Avenue East maintains a posted speed limit of 70 km/hr.
- **Bramsteele Road** is a local road under the jurisdiction of the City of Brampton. It operates as a 2-lane cross-section with exclusive left turn lanes at the signalized Rutherford Road South intersection. Bramsteele Road maintains an unposted speed limit of 50 km/hr.

- **Hale Road** is a local road under the jurisdiction of the City of Brampton. It operates as a 2-lane cross-section and maintains an unposted speed limit of 60 km/hr.

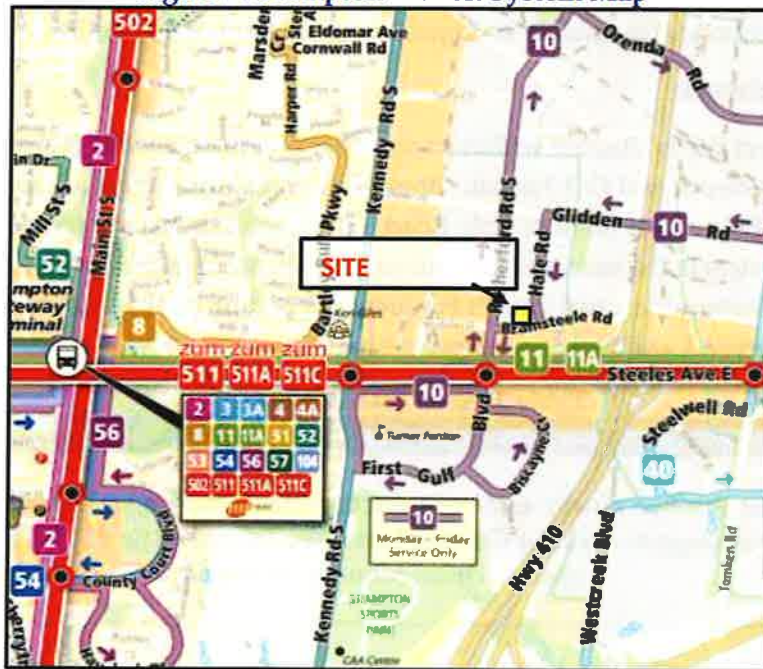
2.2 Transit Network

The proposed subject site is situated within an area that is currently well serviced by the existing Brampton transit network and GO Transit. Brampton Transit Bus stops are located right at the site intersection of Bramsteele Road & Hale Road. The transit routes are provided in **Appendix B** and the route services in the vicinity of the subject site are summarized in **Table 2**. The existing Brampton Transit System Map and Transit Frequency Schedule by the vicinity of the subject site are illustrated in **Figure 3** and **Figure 4**, respectively.

Table 2: Area Transit Context

Bus Route	Route Description	Frequency
511/ 511A Züm Steeles (East of Brampton Gateway Terminal)	Operates in a mostly east-west direction between Lisgar GO Station, Mississauga to Humber College Terminal, Toronto. The 511/511A bus operates from Monday to Sunday.	See Figure 4
511C Züm Steeles (East of Brampton Gateway Terminal)	Operates in a mostly east-west direction between Lisgar GO Station, Mississauga to Humber College Terminal, Toronto. The 511C bus operates from Monday to Friday, no evening service.	
7/7A Kennedy	Operates in a mostly north-south direction between Hurontario Street @ Courtneypark Drive, Mississauga to Hurontario Street south of Mayfield Road, Brampton. The 7 Kennedy bus operates Monday to Sunday, and the 7A operates from Monday to Saturday.	
10 South Industrial	Operates in a north-south direction with service between Kennedy Road north of First Gulf Boulevard to Bramalea Terminal, Brampton. The 10 Industrial South bus operates from Monday to Friday, no evening service.	
11/11A Steeles	Operates in an east-west direction between Lisgar GO Station, Mississauga to Humber College Terminal, Toronto. The 11/11A Steeles bus operates from Monday to Sunday.	
Kitchener GO Train Line	Operates in an east-west direction between Downtown Kitchener to Union Station, Toronto. The Kitchener Go train line operates from Monday to Friday from 4:30 am to 10:00 pm.	

Figure 3: Brampton Transit System Map



Source: Brampton Transit Route Map

Figure 4: Transit Route Frequency Guide

Route Name & Number		Monday-Friday			Saturday		Sunday		Notes
		AM/PM Peak	Midday	Evening After 7 pm	Day	Evening	Day	Evening	
511/511A	Steeles (East of Gateway Terminal)	7.5	10	15/20	15/12	20	20	20	
511C	Steeles (To Sheridan College)	15	20	—	—	—	—	—	
777A	Kennedy ¹	7.5	15	20/30	12	25/30	15	30	
10	South Industrial	25	50	—	—	—	—	—	
11/11A	Steeles' (East)	10/8	20	30	30	30	30	30	

2.3 Active Transportation Network

Active transportation network involves human-powered forms of travel with walking and cycling being the most dominant and can be combined with other modes such as public transit.

2.3.1 Sidewalk Network

Currently, there are sidewalks located on both sides of Rutherford Road South, west side of Bramsteele Road and south side of Hale Road. The proposed development provides direct sidewalk connections to the surrounding road network. The sidewalk connections to the surrounding intersections and roadways will facilitate pedestrian movement to and from the development.

2.3.2 Bicycle Network

Currently, cycling routes do not exist within the general area of the proposed development, as seen in **Figure 5**. However, in general, cyclists will have to share the road with automobile traffic. This is an area of improvement that the Region of Peel and the City of Brampton should fast track. This provision will facilitate and encourage new residents and employees to take alternative and sustainable modes of transportation to work, school, shopping, or other discretionary trips during the peak periods.

Figure 5: City of Brampton Cycling Map



Source: Brampton Cycling Map

Based on the above, it is UrbanTrans’ opinion that the area surrounding the proposed development is well served by existing active transportation, including walking, cycling, and transit. The existing and future network will continue to reduce the demand of single occupancy vehicular use.

3.0 TRANSPORTATION DEMAND MANAGEMENT (TDM)

Transportation Demand Management (TDM) Plan discusses measures to reduce congestion, minimize the number of single-occupant vehicle and encourage non-auto modes of travel such as walking, cycling and transit as well as ridesharing. TDM plans consist of specialized policies, targeted plans, innovative mobility services and products that encourage people to use sustainable modes of transportation, rather than driving alone, or make fewer trips by car.

TDM strategies have multiple benefits including reduce auto-related emissions to improve air quality, decreased traffic congestion to reduce travel time, increased travel options, reduce personal transportation costs and energy consumption and support Provincial smart growth objectives.

The primary objective of this TDM plan are as follows:

- Provision of facilities/operations to promote behavioural change for reduced automobile uses and encourage the use of alternative sustainable transportation modes aside from single-occupancy vehicle (SOV).
- Maximize average auto occupancies, with the intent of a net minimization of site-related auto trips.
- Create and support opportunities for an inclusive transportation system to accommodate and facilitate all potential road uses in a safe and efficient manner.

3.1 Smart Commute

In accordance with UrbanTrans review of the 2016 Transportation Tomorrow Survey Data Ward 3, in the City of Brampton provided in **Appendix C**, it is suggested that there is a considerable number of trips made by residents in Ward 3 and trips made to Ward 3 that are passenger (carpool), and active transportation with approximately 35% and 30%, respectively.

The Smart Commute Brampton-Caledon are non-profit Transportation Management Associations (TMAs) that promote commuter options and transportation services to employers as well as promoting sustainable transportation which are ways of travelling between places with little or no effect on the environment. The Smart Commute aims to reduce traffic and fight climate change by encouraging people to use more environmentally friendly ways of travelling in and around Brampton and Caledon. Furthermore, Smart Commute works with employers to provide easier, less stressful ways for employees to get to and from work. Smart Commute offers employers:

- Site assessments and surveys to understand employee commute behaviour.
- Customized action plans to encourage employees to explore and try out smart travel options including exclusive carpool ride-matching programs, emergency ride home programs, discounted transit pass programs, walking and cycling programs.
- Executing employee trip reduction programs at local workplaces.
- Reduce traffic congestion and improve air quality and health by reducing vehicle emissions.

- Enhance employee efficiency and confidence, and reduce employee turnover
- Support for improved transit service, and increased local transportation infrastructure
- Bus-only and cycling lanes, and a wider network of subway and light rapid transit.
- Encourage the benefits of transit-supportive development and smart-growth strategies
- Promote legislative flexibility in support of high value, cost effective transportation strategies such as vanpools, telework, transit subsidies and shuttle services; and,
- Increase opportunities for TMA collaboration with business and government

Smart Commute offers one-on-one support for staff to use sustainable modes and provides promotions and incentives on an on-going basis. A web-based car matching tool is provided to allow carpoolers to easily identify ride matching options among a large membership base and form carpooling arrangements. It is recommended the Owner enrolls in the Smart Commute program as the benefits of this program include the following:

Employer/Property Owners & Managers Benefits:

- A more attractive workplace for potential recruits
- Better employee retention
- Increased employee productivity
- Less employees will need to park on-site

Employee Benefits:

- Reduced commuting time and costs
- Increased job satisfaction
- Improved health and safety

Community Benefits:

- Less cars on the roads
- Less need to build or widen roads
- Cleaner air
- Better health

3.2 TDM Implementation

Based on our experience, excessive parking supply imposes environmental costs, contradicts community development objects for more livable and walkable communities, and tends to increase driving and discourage the use of alternative mode of travel. It is anticipated that the combination of reduced parking supply and an efficient public transit system will encourage the use of alternative modes of travel.

Sustainable Transportation Strategy recognizes and identifies Region of Peel's role to build awareness relating to sustainable modes of commuting. Travel Demand Management / Active Transportation Design recommendations have a vital role in the design of urban environments and its influence on travel choices. The Region of Peel – Sustainable Transportation and Strategic Initiatives (STSI) aim to achieve outcomes by integrating TDM/AT and development to provide

more attractive streetscapes that are inclusive and inviting for everyone: motorists, pedestrians, and cyclists; and promotes a healthy and active lifestyle.

Based on our review of the context of the proposed development in relation to the Regions' TDM/AT recommendations, **Table 3** details TDM measures and incentives recommended for the proposed development.

Table 3: TDM/AT Recommendations

Category	Transportation Mobility Plan Guidelines	Recommended Actions	Responsibility
Transit Incentives & Parking	- To reduce the number of parking spaces, it is recommended that development provides PRESTO Transit cards with discounted pricing as an incentive to staff to use transit rather than vehicle travel.	- It is recommended the applicant provide a one-time monthly Presto Card with value of \$25 each to be provided for 25% of employees. - The applicant shall coordinate with Region of Peel and City of Brampton to deliver and promote the Transit Incentive information packages and programs to employees. The information packages include Brampton Transit and GO maps and schedules, community and cycling maps, where appropriate. - The applicant enrolls in the Smart Commute Program and provides Smart Commute information to the employees.	-Applicant

4.0 Transportation Planning Context in the Area

4.1 City of Brampton Official Plan (September 2020)

The City of Brampton Official Plan provides direction for the next stage of the Cities growth and provides a vision for a future Brampton through specific guidance for both the public and private sectors. The most recent office consolidation of Brampton's Official Plan was updated September 2020.

The Official Plan indicates that: *"In order to provide for more sustainable transportation practices in the future, Brampton must find ways and design policies to assist in reducing the number and length of automobile trips, by accommodating and encouraging increased transit ridership, by encouraging active transportation such as cycling and walking, by increasing car occupancy (i.e. carrying passengers, carpooling, etc.). This Plan endeavours to increase the modal share of transit and alternative modes by improving the features – passenger and pedestrian amenities, routes, operating speeds, interregional connections, multi-use paths – that make transit and other transportation alternatives convenient,*

attractive and reliable. Streets will be designed to be complete streets; their design and operation will provide for the needs of all users, including pedestrians, bicyclists and transit passengers of all ages and abilities, as well as trucks, buses and automobiles.”

Based on our review of the Official Plan Transportation Policies and directions, the City indicates that there is a desire to steer development towards a transit-oriented transportation network. This will have the effect to reduce single-occupant-vehicle trips and to support other modes of transportation such as public transit and active transportation.

5.0 PARKING REQUIREMENT

5.1 Zoning By-law Review

As previously mentioned, the subject lands currently provide a one-storey commercial building comprising of a motor vehicle sales, auto repair shop and a restaurant with approximately 365 m², 353 m² and 250 m² of gross floor area (GFA), respectively. Based on discussion with the client, the purpose of the minor variance application is to renew the existing uses that were temporarily permitted while removing the restaurant and replacing it with the motor vehicle repair shop. As such, a total of 365 m² and 602 m² of gross floor area (GFA) for motor vehicle sales and motor vehicle repair shop, respectively are proposed. A total of 39 parking spaces are proposed on site including six (6) tandem parking spaces.

The City of Brampton’s Zoning By-law No. 270-2004 is applied to the proposed commercial development. The subject lands are designated M2 – SECTION 3237 on Sheet 61 of Schedule A to this by-law which specifies a minimum of 50 parking spaces shall be provided on the site.

Based on the applicable Zoning By-law, the proposed development is required to provide 50 vehicle parking spaces. The proposed development will provide a total of 39 parking spaces including six (6) tandem parking spaces resulting in a parking deficiency of 11 spaces.

As previously mentioned, based on our review of the City of Brampton’s Official Plan, policies and directions indicate that there is a need to reduce automobile trips by managing parking in the City to reduce single-occupant vehicle trips and to steer development towards a transit-oriented transportation network.

5.2 ITE Parking Generation Manual 5th Edition

The Parking Generation Manual 5th Edition (January 2019) published by the Institute of Transportation Engineers (ITE) is an educational tool for planners, transportation professionals, zoning boards, and others who are interested in estimating parking demand of a proposed development. For the purposes of this assessment, **Table 5** calculates the existing Land Use’s average peak period parking demand per 1000 sq.ft GFA. The calculated peak parking demands for each land use summarized in Table 5 was multiplied by the time-of-day distribution fractions for their respective ITE Land Use Code to get the hourly land use parking demands over the course of a typical weekday at study sites in a general urban/suburban setting. The land use

hourly parking demands were added together to calculate the total onsite parking demand estimates over the course of a typical weekday and is summarized in Table 6.

**Table 5: ITE Parking Generation 5th Edition
(Land Use Average Peak Parking Demand)**

Land Use	GFA (sq.ft.)	Average Parking Rates	Parking Requirement
Automobile Sale (Used) Land Use (841)	3,929	3.08 parking spaces / 1000 sq.ft. GFA	12
Automobile Parts and Service Centre Land Use (943)	6,749	1.69 parking spaces / 1000 sq.ft. GFA	11

**Table 6: ITE Parking Generation 5th Edition
(Time of Day Distribution Average Peak Parking Demand)**

Time	Automobile Sales (Used) LUC 841		Automobile Parts and Service Centre LUC 943		Total On-site Parking Demand
	% of Weekday Parking Demand	Vehicle Parking Demand	% of Weekday Parking Demand	Vehicle Parking Demand	Vehicle Parking Demand
8:00 AM	14%	2	45%	5	7
9:00 AM	44%	5	84%	9	14
10:00 AM	69%	8	97%	11	19
11:00 AM	90%	11	100%	11	22
12:00 PM	79%	9	87%	10	19
1:00 PM	79%	9	81%	9	18
2:00 PM	75%	9	87%	10	19
3:00 PM	92%	11	91%	10	21

**Table 6: ITE Parking Generation 5th Edition (Cont'd)
(Time of Day Distribution Average Peak Parking Demand)**

Time	Automobile Sales (Used) LUC 841		Automobile Parts and Service Centre LUC 943		Total On-site Parking Demand
	% of Weekday Parking Demand	Vehicle Parking Demand	% of Weekday Parking Demand	Vehicle Parking Demand	Vehicle Parking Demand
4:00 PM	94%	11	86%	9	20
5:00 PM	100%	12	71%	8	20
6:00 PM	63%	8	23%	3	11
7:00 PM	32%	4	6%	1	5

8:00 PM	13%	2	0%	0	2
Total Parking Required					22
Total Parking Demand					39
Difference					+17

Based on the recommended parking rates outlined in the ITE Parking Generation Manual 5th Edition detailed in Table 5, the proposed development is required to provide 22 vehicle parking spaces. The proposed development will provide a total of 39 vehicle parking spaces resulting in a parking surplus of 17 spaces, thereby meeting the parking requirement based on the recommended ITE parking rates.

5.3 Parking Utilization Survey

As previously mentioned, a total of 39 parking spaces are provided on site including six (6) tandem parking spaces which falls short of the Zoning By-law requirement of a minimum of 50 parking spaces.

As requested by City Staff, to determine the existing peak parking demands at 26 Bramsteele Road, parking utilization surveys were conducted on a typical weekday and weekend during the operating hours of the proposed development. The survey time periods selected to capture the expected peak periods of the combined site land uses were based on the ITE Parking Generation forecast detailed in Table 5. On this basis, parking utilization surveys were conducted by UrbanTrans Engineering on the following days in 30-minute intervals:

- Thursday, January 12, 2023, between 11:00 AM to 5:00 PM
- Saturday, January 14, 2023, between 8:30 AM to 5:00 PM

Table 7 details the existing peak parking demands at the subject site on a typical weekday and weekend.

Table 7: Parking Utilization Survey (26 Bramsteele Road, City of Brampton)

Time Period (Starting)	Thursday, January 12, 2023			Saturday, January 14, 2023		
	Total Demand	Utilization Rate	Available Spaces	Total Demand	Utilization Rate	Available Spaces
Supply	39 Spaces					
11:00 AM	33	85%	6	29	74%	10
11:30 AM	34	87%	5	30	77%	9
12:00 PM	34	87%	5	30	77%	9
12:30 PM	29	74%	10	30	77%	9
1:00 PM	29	74%	10	30	77%	9
1:30 PM	30	77%	9	30	77%	9
2:00 PM	30	77%	9	30	77%	9
2:30 PM	33	85%	6	30	77%	9

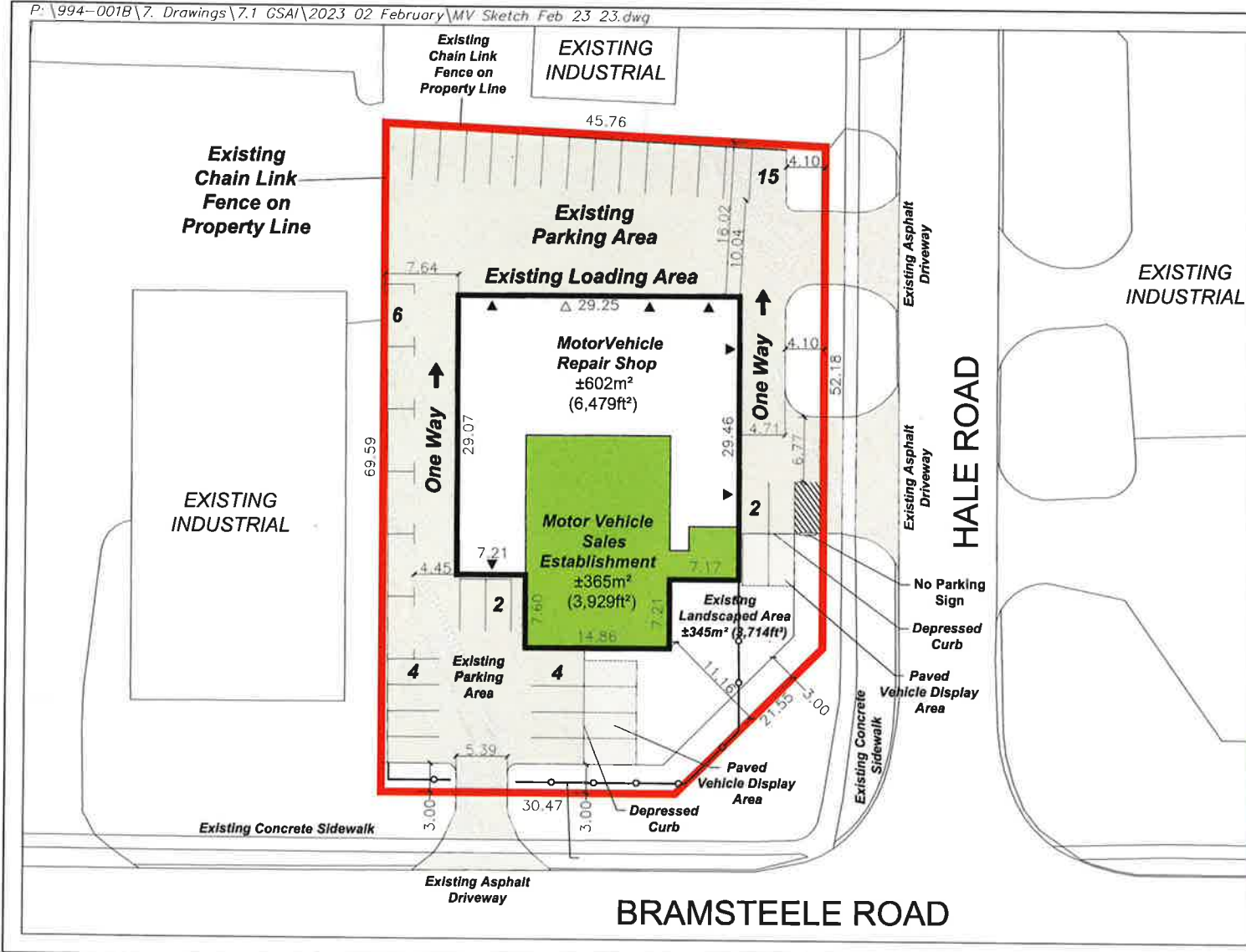
3:00 PM	33	85%	6	30	77%	9
3:30 PM	33	85%	6	30	77%	9
4:00 PM	33	85%	6	27	69%	12
4:30 PM	28	72%	11	25	64%	14
5:00 PM	27	69%	12	24	61%	15
Max Demand	34			30		
Max Utilization	87%			77%		

As shown from the parking utilization survey results above, of the 39 parking spaces made available at 26 Bramsteele Road, a peak parking demand of 34 and 30 parking spaces (or approximately 87% and 77%) were utilized during the highest peak parking demands over the course of two survey days. As such, a total of five (5) parking spaces are technically always made available during the expected peak periods.

It is UrbanTrans' opinion that the minimum of 50 parking spaces based on the Zoning By-law is overly conservative. Furthermore, parking management is the best TDM measure to encourage employees to walk and cycle to and from the proposed development. The City continues to evolve into an increasingly urban environment with more pervasive and frequent public transportation and has recognized the need to review its parking standards. High minimum parking requirements contribute to an oversupply of parking, inefficient use of land, and dispersed development patterns, which in turn strengthen automobile dependence and discourages alternative forms of transportation such as transit and walking.

It is UrbanTrans' opinion the parking provision to accommodate all future parking demands on the subject site comprising of a total of 365 m² and 602 m² of gross floor area (GFA) for motor vehicle sales and motor vehicle repair shop, respectively is reasonable and justified based on the justifications and TDM measures and incentives provided in this Study without adversely impacting users of the 26 Bramsteele Road property users.

**Appendix
Existing Site Plan**



DEVELOPMENT CONCEPT PLAN - 2466482 ONTARIO INC.

26 BRAMSTEELE ROAD
PART OF LOT 1,
CONCESSION 2 E.H.S.
CITY OF BRAMPTON
REGION OF PEEL

█ Subject Lands

Existing Development Statistics

Site Area: ±0.30ha (0.74ac)
Total GFA: ±967m² (10,408ft²)
Parking Provided: 33 Spaces
8 Tandem Spaces
Total Parking: 39 Spaces

Existing Auto Repair ±602m² (6,479ft²) - 62%
Proposed Motor Vehicle Sales ±365m² (3,929ft²) - 38%

Notes:

Typical Perpendicular Parking Space: 2.7m x 5.4m
Typical Parallel Parking Space: 2.75m x 6.5m

- ▼ Denotes an entrance door
- ▽ Denotes an overhead door

Required Variances:

- 1 To permit a motor vehicle sales establishment having a gross floor area of 355 square metres (3,929 square feet) accessory to the motor vehicle repair, whereas the Zoning By-law does not currently permit a motor vehicle sales establishment in the M2-3237 zone; and,
- 2 To permit a minimum of 39 parking spaces (including 8 tandem parking spaces) on-site, whereas the M2-3237 zone permits a minimum of 50 parking spaces on site.



Scale 1:250
February 22, 2023



Appendix B
Existing Transit Routes

511 511A 511C Lisgar GO Station • Steeles Avenue East • Humber College

EASTBOUND: Saturday

Route Branch	A	B	C	D	E	F	G	H	I	J	K	L	M	N
511	6:00	6:15	6:30	6:45	7:00	7:15	7:30	7:45	8:00	8:15	8:30	8:45	9:00	9:15
511A	6:00	6:15	6:30	6:45	7:00	7:15	7:30	7:45	8:00	8:15	8:30	8:45	9:00	9:15
511C	6:00	6:15	6:30	6:45	7:00	7:15	7:30	7:45	8:00	8:15	8:30	8:45	9:00	9:15

WESTBOUND: Saturday

Route Branch	M	N	O	P	Q	R	S	T	U	V	W	X	Y	Z
511	6:00	6:15	6:30	6:45	7:00	7:15	7:30	7:45	8:00	8:15	8:30	8:45	9:00	9:15
511A	6:00	6:15	6:30	6:45	7:00	7:15	7:30	7:45	8:00	8:15	8:30	8:45	9:00	9:15
511C	6:00	6:15	6:30	6:45	7:00	7:15	7:30	7:45	8:00	8:15	8:30	8:45	9:00	9:15

EASTBOUND: Sunday / Holidays

Route Branch	A	B	C	D	E	F	G	H	I	J	K	L	M	N
511	6:00	6:15	6:30	6:45	7:00	7:15	7:30	7:45	8:00	8:15	8:30	8:45	9:00	9:15
511A	6:00	6:15	6:30	6:45	7:00	7:15	7:30	7:45	8:00	8:15	8:30	8:45	9:00	9:15
511C	6:00	6:15	6:30	6:45	7:00	7:15	7:30	7:45	8:00	8:15	8:30	8:45	9:00	9:15

WESTBOUND: Sunday / Holidays

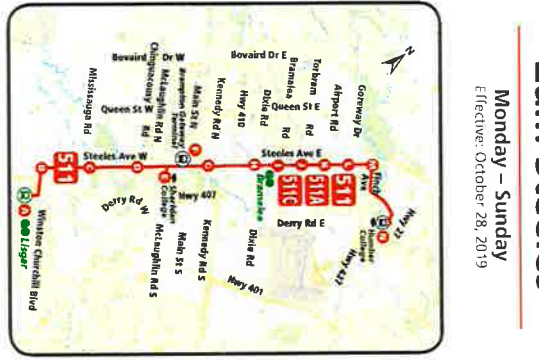
Route Branch	M	N	O	P	Q	R	S	T	U	V	W	X	Y	Z
511	6:00	6:15	6:30	6:45	7:00	7:15	7:30	7:45	8:00	8:15	8:30	8:45	9:00	9:15
511A	6:00	6:15	6:30	6:45	7:00	7:15	7:30	7:45	8:00	8:15	8:30	8:45	9:00	9:15
511C	6:00	6:15	6:30	6:45	7:00	7:15	7:30	7:45	8:00	8:15	8:30	8:45	9:00	9:15

While every effort will be made to keep to the timetables, Brampton Transit does not undertake that its buses will be operated in accordance with them, or at all. Brampton Transit will not be responsible for any loss, damage or inconvenience caused by any operating failure or in consequence of any inaccuracies in this timetable. Timings highlighted in blue indicate the trip is in a.m. hours. Timings highlighted in red indicate the trip is in p.m. hours.

For more information, call 905-874-2999.
 Monday to Friday 7:00 a.m. to 9:00 p.m.
 Saturday 7:00 a.m. to 7:00 p.m.
 Sunday 9:00 a.m. to 6:00 p.m.



Alternate formats available upon request.



Zim Steeles
 Monday - Sunday
 Effective: October 28, 2019

Brampton Transit
 YOUNG FOR LIFE
 Zim
 bramptonart.com



Kennedy

[View In Website Mode](#)

The 7 bus line (Kennedy) has 6 routes. For regular weekdays, their operation hours are:

(1) 7 Kennedy North: 12:17 AM - 11:47 PM (2) 7 Kennedy North To Heart Lake Terminal: 12:00 AM - 11:30 PM (3) 7 Kennedy Sb-Htlk: 1:30 AM - 11:43 PM (4) 7 Kennedy South: 12:08 AM - 11:37 PM (5) 7a Kennedy North: 12:13 AM - 10:57 PM (6) 7a Kennedy South: 5:11 AM - 11:39 PM

Use the Moovit App to find the closest 7 bus station near you and find out when is the next 7 bus arriving.

Direction: 7 Kennedy North

60 stops

[VIEW LINE SCHEDULE](#)

- Hurontario St At Courtneypark Dr E
- Hurontario St At Ambassador Dr
- Hurontario St At Superior Blvd
- Hurontario St At Admiral Blvd
- Hurontario St At Derry Rd E
- Derry Rd At Edwards Blvd
- Derry Rd Btwn Edwards Blvd And Kenderry Gate
- Derry Rd At Kenderry Gate
- Kennedy Rd S N/Of Derry Rd
- Kennedy Rd S at Secretariat Crt
- Kennedy Rd S at Caa Centre
- Kennedy Rd at 7580 Kennedy Rd
- Kennedy Rd at 7725 Kennedy Rd
- Kennedy Rd S N/Of First Gulf Blvd
- Kennedy Rd S/Of Steeles Ave
- Kennedy Rd S N/Of Steeles Ave E
- Kennedy Rd S at 370 Kennedy Rd S
- Kennedy Rd Opp Rambler Dr
- Kennedy Rd S N/Of Rambler Dr
- Kennedy Rd S at Glidden Rd
- Kennedy Rd S Opp Tullamore Rd

7 bus Time Schedule

7 Kennedy North Route Timetable:

Sunday	12:04 AM - 11:03 PM
Monday	6:28 AM - 11:03 PM
Tuesday	4:25 AM - 11:47 PM
Wednesday	12:17 AM - 11:47 PM
Thursday	12:17 AM - 11:47 PM
Friday	12:17 AM - 11:47 PM
Saturday	12:17 AM - 11:34 PM

7 bus Info

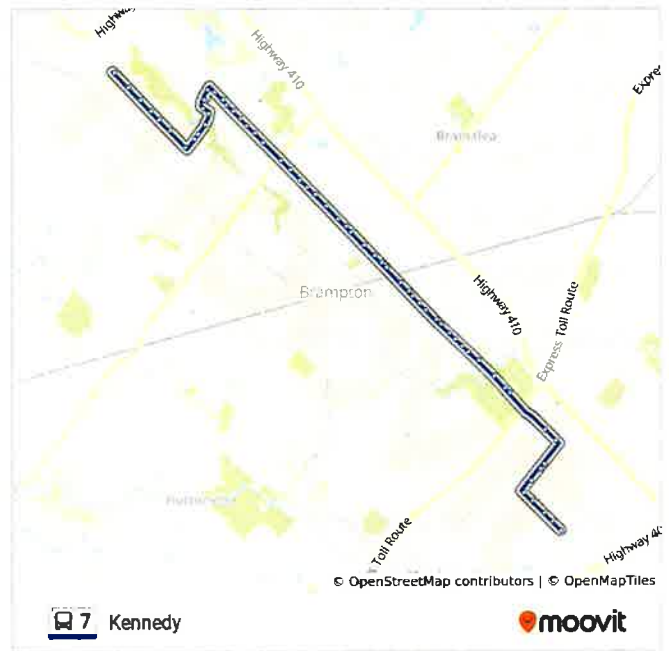
Direction: 7 Kennedy North

Stops: 60

Trip Duration: 49 min

Line Summary:

Kennedy Rd S at Stafford Dr
 Kennedy Rd S Opp Dean St (At 110 Kennedy Rd)
 Kennedy Rd S Opp Research Rd (At 90 Kennedy Rd)
 Kennedy Rd S at Clarence St
 Kennedy Rd S N/Of Orenda Rd
 Kennedy Rd S at Eastern Ave
 Kennedy Rd S at Queen St E
 Kennedy Rd N Opp Church St
 Kennedy Rd N Opp Edgemont Dr
 Kennedy Rd N at Centennial Mall
 Kennedy Rd N at Vodden St E
 Kennedy Rd N at Townsend Gate
 Kennedy Rd N at Williams Pky E
 Kennedy Rd N N/Of Williams Pky E
 Kennedy Rd N at Rutherford Rd N
 Kennedy Rd N Btwn Rutherford Rd N & Bovaird Dr E
 Kennedy Rd N at Bovaird Dr E
 Kennedy Rd N at Notre Dame Ave
 Kennedy Rd N Btwn Notre Dame Ave & Cochrane Ave
 Kennedy Rd N at Cochrane Ave
 Kennedy Rd N at Heart Lake Medical
 Kennedy Rd N at Piedmont Dr
 Kennedy Rd N N/Of Piedmont Dr
 Kennedy Rd N at Sandalwood Pky E
 Kennedy Rd N N/Of Sandalwood Pky E
 Conestoga Dr at Mondragon Circle
 Heart Lake Terminal
 Conestoga Dr at Loafers Lake Lane
 Sandalwood Pky E W/Of Conestoga Dr
 Sandalwood Pky E Opp 95 Sandalwood Pky E (Firestat



Sandalwood Pky E at Braidwood Lake Rd

Sandalwood Pky E W/Of Braidwood Lake Rd

Sandalwood - Zum Main Station Stop Nb

Hurontario St S/Of Petworth Rd

Hurontario St Opp 10866 Hurontario St

Hurontario St S/Of Conservation Dr

Hurontario St S/Of Perth St

Hurontario St S/Of Roycrest St

Hurontario St S/Of Mayfield Rd

Direction: 7 Kennedy North To Heart Lake Terminal

48 stops

[VIEW LINE SCHEDULE](#)

- Hurontario St At Courtneypark Dr E
- Hurontario St At Ambassador Dr
- Hurontario St At Superior Blvd
- Hurontario St At Admiral Blvd
- Hurontario St At Derry Rd E
- Derry Rd At Edwards Blvd
- Derry Rd Btwn Edwards Blvd And Kenderry Gate
- Derry Rd At Kenderry Gate
- Kennedy Rd S N/Of Derry Rd
- Kennedy Rd S at Secretariat Crt
- Kennedy Rd S at Caa Centre
- Kennedy Rd at 7580 Kennedy Rd
- Kennedy Rd at 7725 Kennedy Rd
- Kennedy Rd S N/Of First Gulf Blvd
- Kennedy Rd S/Of Steeles Ave
- Kennedy Rd S N/Of Steeles Ave E
- Kennedy Rd S at 370 Kennedy Rd S
- Kennedy Rd Opp Rambler Dr
- Kennedy Rd S N/Of Rambler Dr
- Kennedy Rd S at Glidden Rd
- Kennedy Rd S Opp Tullamore Rd
- Kennedy Rd S at Stafford Dr
- Kennedy Rd S Opp Dean St (At 110 Kennedy Rd)
- Kennedy Rd S Opp Research Rd (At 90 Kennedy Rd)
- Kennedy Rd S at Clarence St
- Kennedy Rd S N/Of Orenda Rd
- Kennedy Rd S at Eastern Ave
- Kennedy Rd S at Queen St E

7 bus Time Schedule

7 Kennedy North To Heart Lake Terminal Route
Timetable:

Sunday	12:00 AM - 11:30 PM
Monday	12:00 AM - 11:30 PM
Tuesday	12:00 AM - 11:30 PM
Wednesday	12:00 AM - 11:30 PM
Thursday	12:00 AM - 11:30 PM
Friday	12:00 AM - 11:30 PM
Saturday	12:00 AM - 11:30 PM

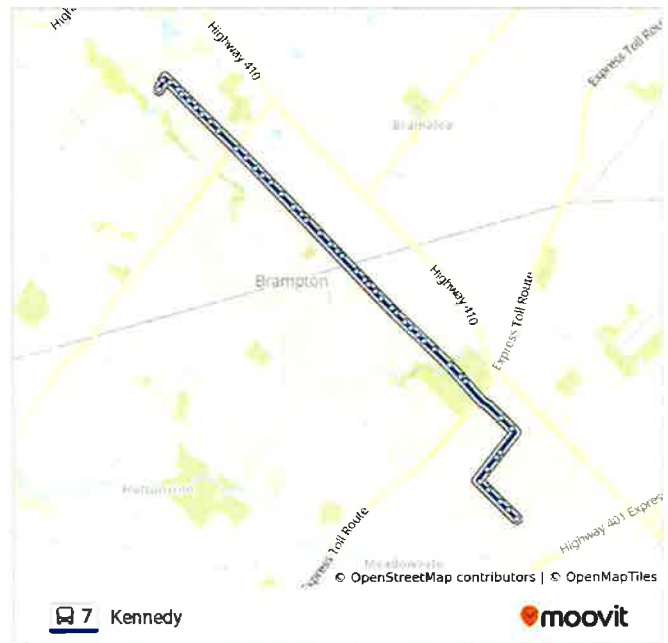
7 bus Info

Direction: 7 Kennedy North To Heart Lake Terminal

Stops: 48

Trip Duration: 34 min

Line Summary:



Kennedy Rd N Opp Church St

Kennedy Rd N Opp Edgemont Dr

Kennedy Rd N at Centennial Mall

Kennedy Rd N at Vodden St E

Kennedy Rd N at Townsend Gate

Kennedy Rd N at Williams Pky E

Kennedy Rd N N/Of Williams Pky E

Kennedy Rd N at Rutherford Rd N

Kennedy Rd N Btwn Rutherford Rd N & Bovaird Dr
E

Kennedy Rd N at Bovaird Dr E

Kennedy Rd N at Notre Dame Ave

Kennedy Rd N Btwn Notre Dame Ave & Cochrane
Ave

Kennedy Rd N at Cochrane Ave

Kennedy Rd N at Heart Lake Medical

Kennedy Rd N at Piedmont Dr

Kennedy Rd N N/Of Piedmont Dr

Kennedy Rd N at Sandalwood Pky E

Kennedy Rd N N/Of Sandalwood Pky E

Conestoga Dr at Mondragon Circle

Heart Lake Terminal

Direction: 7 Kennedy Sb-Htlk

12 stops

[VIEW LINE SCHEDULE](#)

- Hurontario St S/Of Mayfield Rd
- Mayfield Rd Opp Summer Valley Dr
- Mayfield Rd W/Of Inder Heights Dr
- Mayfield Rd W/Of Kennedy Rd
- Kennedy Rd N S/Of Kenpark Ave
- Kennedy Rd N at Carnforth Dr
- Kennedy Rd N Opp Christie Dr
- Kennedy Dr N S/Of Conservation Dr
- Kennedy Rd N Opp Mcfadden Dr
- Kennedy Rd N S/Of Somerset Dr
- Conestoga Dr at Mondragon Circle
- Heart Lake Terminal

7 bus Time Schedule

7 Kennedy Sb-Htlk Route Timetable:

Sunday	1:16 AM - 11:43 PM
Monday	8:11 PM - 11:43 PM
Tuesday	3:39 PM - 11:43 PM
Wednesday	1:30 AM - 11:43 PM
Thursday	1:30 AM - 11:43 PM
Friday	1:30 AM - 11:43 PM
Saturday	1:30 AM - 11:43 PM

7 bus Info

Direction: 7 Kennedy Sb-Htlk

Stops: 12

Trip Duration: 8 min

Line Summary:



Direction: 7 Kennedy South

60 stops

[VIEW LINE SCHEDULE](#)

Hurontario St S/Of Mayfield Rd
Mayfield Rd Opp Summer Valley Dr
Mayfield Rd W/Of Inder Heights Dr
Mayfield Rd W/Of Kennedy Rd
Kennedy Rd N S/Of Kenpark Ave
Kennedy Rd N at Carnforth Dr
Kennedy Rd N Opp Christie Dr
Kennedy Dr N S/Of Conservation Dr
Kennedy Rd N Opp Mcfadden Dr
Kennedy Rd N S/Of Somerset Dr
Conestoga Dr at Mondragon Circle
Heart Lake Terminal
Conestoga Dr at Loafers Lake Lane
Sandalwood Pky E E/Of Conestoga Dr
Sandalwood Pkwy W/Of Kennedy Rd
Kennedy Rd N Opp Piedmont Dr
Kennedy Rd N Opp Heart Lake Medical Bldg
Kennedy Rd N at Ruth Ave
Kennedy Rd N Btwn Ruth Ave & Wexford Rd
Kennedy Rd N at Wexford Rd
Kennedy Rd N at Bovaird Dr E
Kennedy Rd N Btwn Bovaird Dr E & Centre St N
Kennedy Rd N at Centre St N
Kennedy Rd N Btwn Centre St N & Williams Pky E
Kennedy Rd N at Williams Pky E
Kennedy Rd N at Linkdale Rd
Kennedy Rd N at Vodden St E
Kennedy Rd N Opp Centennial Mall Private Entrance

7 bus Time Schedule

7 Kennedy South Route Timetable:

Sunday	12:21 AM - 11:19 PM
Monday	6:42 AM - 11:19 PM
Tuesday	4:35 AM - 11:37 PM
Wednesday	12:08 AM - 11:37 PM
Thursday	12:08 AM - 11:37 PM
Friday	12:08 AM - 11:37 PM
Saturday	12:08 AM - 11:52 PM

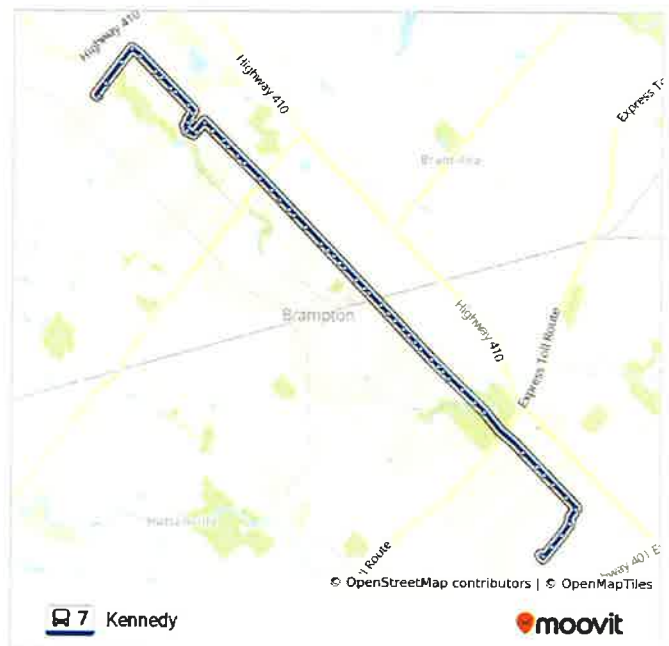
7 bus Info

Direction: 7 Kennedy South

Stops: 60

Trip Duration: 48 min

Line Summary:



Kennedy Rd N at Edgemont Dr
Kennedy Rd N at Mccaul St
Kennedy Rd N at Church St E
Kennedy Rd S S/Of Queen St E
Kennedy Rd S S/Of Eastern Ave
Kennedy Rd S at Orenda Rd
Kennedy Rd S at Clarence St
Kennedy Rd S at Research Rd
Kennedy Rd S at Dean St
Kennedy Rd S at Tullamore Crt (Tullamore
Nursing)
Kennedy Rd S S/Of Tullamore Crt
Kennedy Rd S at Chamney Crt
Kennedy Rd S/Of Chamney Crt
Kennedy Rd S S/Of Rambler Dr
Kennedy Rd S at 365 Kennedy Rd S
Kennedy Rd N/Of Steeles Ave
Kennedy Rd S S/Of Steeles Ave E
Kennedy Rd S at Hartford Trail
Kennedy Rd S at Brampton Golf Club (7700
Kennedy)
Kennedy Rd S Opp Caa Centre
Kennedy Rd S Opp Secretariat Court
Kennedy Rd S N/Of Derry Rd
Kennedy Rd At Gibraltar Dr
Kennedy Rd S at Admiral Blvd
Kennedy Rd At Ambassador Dr
Kennedy Rd At Courtneypark Dr
Courtneypark Dr E W/Of Kennedy Rd
Courtneypark Dr E at Innovator Dr
Courtneypark Dr Btwn Innovator Dr And Edwards
Bl
Courtneypark Dr at Edwards Blvd
Courtneypark Dr At Hurontario St

Direction: 7a Kennedy North

48 stops

[VIEW LINE SCHEDULE](#)

Hurontario St At Courtneypark Dr E
Hurontario St At Ambassador Dr
Hurontario St At Superior Blvd
Hurontario St At Admiral Blvd
Hurontario St At Derry Rd E
Derry Rd At Edwards Blvd
Derry Rd Btwn Edwards Blvd And Kenderry Gate
Derry Rd At Kenderry Gate
Kennedy Rd S N/Of Derry Rd
Kennedy Rd S at Secretariat Crt
Kennedy Rd S at Caa Centre
Kennedy Rd at 7580 Kennedy Rd
Kennedy Rd at 7725 Kennedy Rd
Kennedy Rd S N/Of First Gulf Blvd
Kennedy Rd S/Of Steeles Ave
Kennedy Rd S N/Of Steeles Ave E
Kennedy Rd S at 370 Kennedy Rd S
Kennedy Rd Opp Rambler Dr
Kennedy Rd S N/Of Rambler Dr
Kennedy Rd S at Glidden Rd
Kennedy Rd S Opp Tullamore Rd
Kennedy Rd S at Stafford Dr
Kennedy Rd S Opp Dean St (At 110 Kennedy Rd)
Kennedy Rd S Opp Research Rd (At 90 Kennedy Rd)
Kennedy Rd S at Clarence St
Kennedy Rd S N/Of Orenda Rd
Kennedy Rd S at Eastern Ave
Kennedy Rd S at Queen St E

7 bus Time Schedule

7a Kennedy North Route Timetable:

Sunday	Not Operational
Monday	Not Operational
Tuesday	6:10 AM - 10:57 PM
Wednesday	12:13 AM - 10:57 PM
Thursday	12:13 AM - 10:57 PM
Friday	12:13 AM - 10:57 PM
Saturday	12:13 AM - 7:06 PM

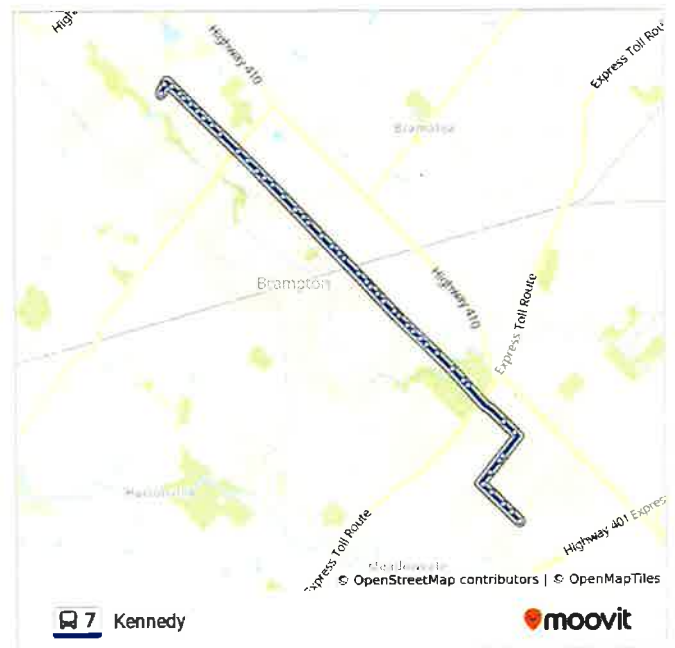
7 bus Info

Direction: 7a Kennedy North

Stops: 48

Trip Duration: 47 min

Line Summary:



Kennedy Rd N Opp Church St

Kennedy Rd N Opp Edgemont Dr

Kennedy Rd N at Centennial Mall

Kennedy Rd N at Vodden St E

Kennedy Rd N at Townsend Gate

Kennedy Rd N at Williams Pky E

Kennedy Rd N N/Of Williams Pky E

Kennedy Rd N at Rutherford Rd N

Kennedy Rd N Btwn Rutherford Rd N & Bovaird Dr
E

Kennedy Rd N at Bovaird Dr E

Kennedy Rd N at Notre Dame Ave

Kennedy Rd N Btwn Notre Dame Ave & Cochrane
Ave

Kennedy Rd N at Cochrane Ave

Kennedy Rd N at Heart Lake Medical

Kennedy Rd N at Piedmont Dr

Kennedy Rd N N/Of Piedmont Dr

Kennedy Rd N at Sandalwood Pky E

Kennedy Rd N N/Of Sandalwood Pky E

Conestoga Dr at Mondragon Circle

Heart Lake Terminal

Direction: 7a Kennedy South

49 stops

[VIEW LINE SCHEDULE](#)

Heart Lake Terminal

Conestoga Dr at Loafers Lake Lane

Sandalwood Pky E E/Of Conestoga Dr

Sandalwood Pkwy W/Of Kennedy Rd

Kennedy Rd N Opp Piedmont Dr

Kennedy Rd N Opp Heart Lake Medical Bldg

Kennedy Rd N at Ruth Ave

Kennedy Rd N Btwn Ruth Ave & Wexford Rd

Kennedy Rd N at Wexford Rd

Kennedy Rd N at Bovaird Dr E

Kennedy Rd N Btwn Bovaird Dr E & Centre St N

Kennedy Rd N at Centre St N

Kennedy Rd N Btwn Centre St N & Williams Pky E

Kennedy Rd N at Williams Pky E

Kennedy Rd N at Linkdale Rd

Kennedy Rd N at Vodden St E

Kennedy Rd N Opp Centennial Mall Private Entrance

Kennedy Rd N at Edgemont Dr

Kennedy Rd N at Mccaul St

Kennedy Rd N at Church St E

Kennedy Rd S S/Of Queen St E

Kennedy Rd S S/Of Eastern Ave

Kennedy Rd S at Orenda Rd

Kennedy Rd S at Clarence St

Kennedy Rd S at Research Rd

Kennedy Rd S at Dean St

Kennedy Rd S at Tullamore Crt (Tullamore Nursing)

Kennedy Rd S S/Of Tullamore Crt

7 bus Time Schedule

7a Kennedy South Route Timetable:

Sunday	Not Operational
Monday	Not Operational
Tuesday	5:11 AM - 11:39 PM
Wednesday	5:11 AM - 11:39 PM
Thursday	5:11 AM - 11:39 PM
Friday	5:11 AM - 11:39 PM
Saturday	10:09 AM - 6:58 PM

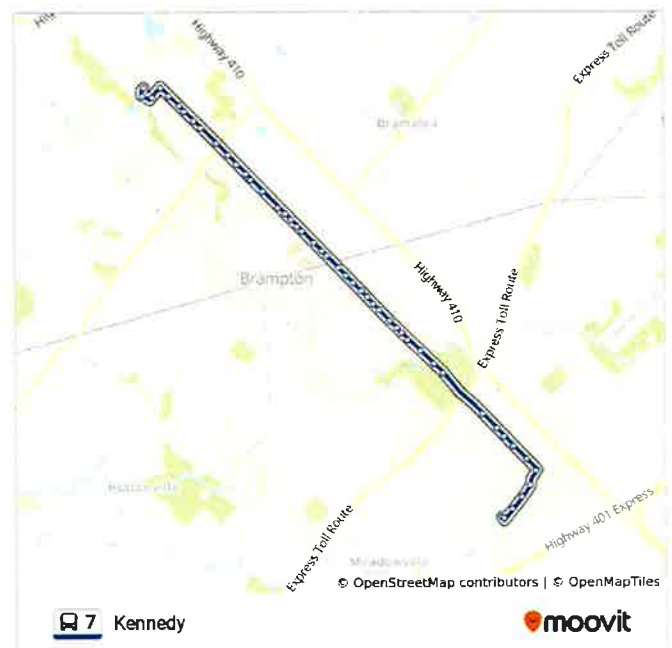
7 bus info

Direction: 7a Kennedy South

Stops: 49

Trip Duration: 43 min

Line Summary:



Kennedy Rd S at Chamney Crt

Kennedy Rd S/Of Chamney Crt

Kennedy Rd S S/Of Rambler Dr

Kennedy Rd S at 365 Kennedy Rd S

Kennedy Rd N/Of Steeles Ave

Kennedy Rd S S/Of Steeles Ave E

Kennedy Rd S at Hartford Trail

Kennedy Rd S at Brampton Golf Club (7700
Kennedy)

Kennedy Rd S Opp Caa Centre

Kennedy Rd S Opp Secretariat Court

Kennedy Rd S N/Of Derry Rd

Kennedy Rd At Gibraltar Dr

Kennedy Rd S at Admiral Blvd

Kennedy Rd At Ambassador Dr

Kennedy Rd At Courtneypark Dr

Courtneypark Dr E W/Of Kennedy Rd

Courtneypark Dr E at Innovator Dr

Courtneypark Dr Btwn Innovator Dr And Edwards
Bl

Courtneypark Dr at Edwards Blvd

Courtneypark Dr At Hurontario St

Hurontario St At Courtneypark Dr E

7 bus time schedules and route maps are available in an offline PDF at moovitapp.com. Use the [Moovit App](#) to see live bus times, train schedule or subway schedule, and step-by-step directions for all public transit in Toronto.

[About Moovit](#) · [MaaS Solutions](#) · [Supported Countries](#) · [Mooviter Community](#)

© 2022 Moovit - All Rights Reserved

Check Live Arrival Times





South Industrial

[View In Website Mode](#)

The 10 bus line (South Industrial) has 2 routes. For regular weekdays, their operation hours are:
 (1) 10 South Industrial Northbound: 5:53 AM - 7:20 PM (2) 10 South Industrial Southbound: 5:25 AM - 6:55 PM
 Use the Moovit App to find the closest 10 bus station near you and find out when is the next 10 bus arriving.

Direction: 10 South Industrial Northbound
 28 stops
[VIEW LINE SCHEDULE](#)

- Kennedy Rd S N/Of First Gulf Blvd
- Kennedy Rd S/Of Steeles Ave
- Kennedy - Zum Steeles Station Stop Eb
- Rutherford Rd S N/Of Steeles Ave E
- Rutherford Rd S/Of Bramsteele Rd
- Rutherford Rd S N/Of Bramsteele Rd
- Rutherford Rd S at Glidden Rd
- Rutherford Rd S at Selby Rd
- Rutherford Rd S Opp Stafford Rd
- Rutherford Rd S at Clarence St
- Orenda Rd E/Of Rutherford Rd S
- Orenda Rd Btw Rutherford Rd S & Heart Lake Rd
- Orenda Rd Opp Heart Lake Rd
- Orenda Rd Opp Tilbury Crt
- Orenda Rd at 237 Orenda Rd
- Orenda Rd at Titan Rd
- West Dr N/Of Orenda Rd
- West Dr S/Of Clark Blvd (55 West Dr)
- Clark Blvd E/Of West Dr
- Clark Blvd at 185 Clark Blvd
- Clark Blvd at Terese Rd
- Clark Blvd at Braemar Dr

10 bus Time Schedule

10 South Industrial Northbound Route Timetable:

Sunday	Not Operational
Monday	Not Operational
Tuesday	5:53 AM - 7:20 PM
Wednesday	5:53 AM - 7:20 PM
Thursday	5:53 AM - 7:20 PM
Friday	5:53 AM - 7:20 PM
Saturday	Not Operational

10 bus Info

Direction: 10 South Industrial Northbound
Stops: 28
Trip Duration: 22 min
Line Summary:

Clark Blvd at Briar Path

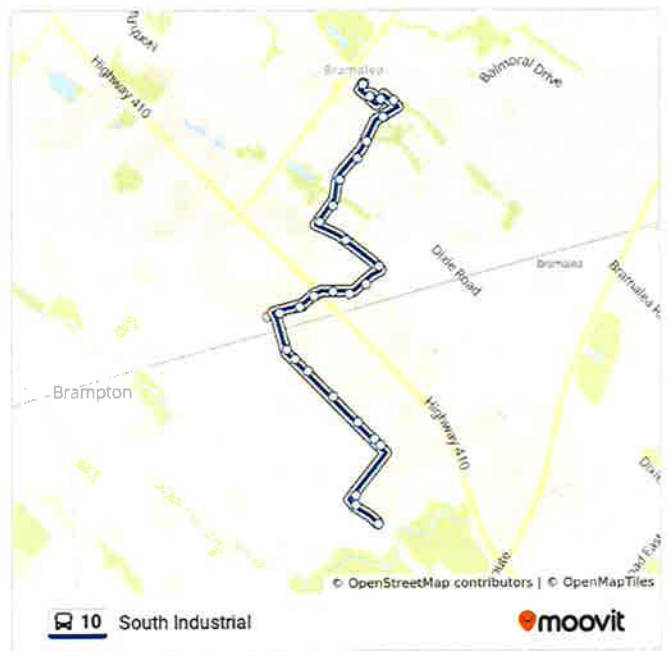
Clark Blvd W/Of Central Park Dr

Central Park Dr N/Of Clark Blvd

Knightsbridge Rd W/Of Central Park Drive

Team Canada Dr Btwn Knightsbridge & Peel Cente
Dr

Bramalea Terminal



Direction: 10 South Industrial Southbound

28 stops

[VIEW LINE SCHEDULE](#)

Bramalea Terminal
Central Park Dr N/Of Clark Blvd
Clark Blvd W/Of Peel Centre Dr
Clark Blvd E/Of Dixie Rd
Clark Blvd at Lisa St
Clark Blvd Opp 185 Clark Blvd
West Dr S/Of Clark Blvd
West Dr at 60 West Dr
West Dr at Norpak Whse
West Dr S/Of Orenda Rd
Glidden Rd W/Of West Dr
Glidden Rd at Blair Dr
Glidden Rd at Heart Lake Rd
Glidden Rd W/Of Heart Lake Rd
Glidden Rd at Hale Rd
Hale Rd S/Of Glidden Rd
Hale Rd Btwn Glidden Rd & Bramsteele Ave
Hale Rd N/Of Bramsteele Ave
Bramsteele Ave E/Of Rutherford Rd
Rutherford Rd S at Steeles Ave E
First Gulf Blvd N/Of Biscayne Cres (N)
Biscayne Cres E/Of First Gulf Blvd (S)
Biscayne Cres E/Of Clipper Crt
Biscayne Cres at 150 Biscayne Cres
Biscayne Cres E/Of First Gulf Blvd (N)
First Gulf Blvd at Biscayne Cres S
First Gulf Blvd Btwn Biscayne Cres (S) And Kennedy
Kennedy Rd S N/Of First Gulf Blvd

10 bus Time Schedule

10 South Industrial Southbound Route Timetable:

Sunday	Not Operational
Monday	Not Operational
Tuesday	5:25 AM - 6:55 PM
Wednesday	5:25 AM - 6:55 PM
Thursday	5:25 AM - 6:55 PM
Friday	5:25 AM - 6:55 PM
Saturday	Not Operational

10 bus Info

Direction: 10 South Industrial Southbound

Stops: 28

Trip Duration: 24 min

Line Summary:



10 bus time schedules and route maps are available in an offline PDF at moovitapp.com. Use the [Moovit App](#) to see live bus times, train schedule or subway schedule, and step-by-step directions for all public transit in Toronto.

[About Moovit](#) • [MaaS Solutions](#) • [Supported Countries](#) • [Mooviter Community](#)

© 2022 Moovit - All Rights Reserved

Check Live Arrival Times





11 Steeles Eastbound

[View In Website Mode](#)

The 11 bus line (11 Steeles Eastbound) has 8 routes. For regular weekdays, their operation hours are:

(1) 11 Steeles Eastbound: 1:45 AM - 11:50 PM (2) 11 Steeles Eb - Gate: 7:17 AM - 6:23 PM (3) 11 Steeles Westbound: 12:08 AM - 11:41 PM (4) 11a Steeles Eastbound: 1:00 AM - 11:57 PM (5) 11a Steeles Westbound: 12:11 AM - 11:56 PM (6) 11d Steeles Eb - Gate: 12:15 AM - 11:36 PM (7) 11d Steeles Eb - Humber: 7:24 AM (8) 11d Steeles Wb - Lisgar: 5:50 AM - 9:50 PM

Use the Moovit App to find the closest 11 bus station near you and find out when is the next 11 bus arriving.

Direction: 11 Steeles Eastbound

63 stops

[VIEW LINE SCHEDULE](#)

- Lisgar Go Station
- Argentia - Zum Steeles Stop Eb
- Winston Churchill - Zum Steeles Station Stop Eb
- Heritage - Zum Steeles Station Stop Eb
- Hereford - Zum Steeles Station Stop Eb
- Mississauga Road - Zum Steeles Station Stop Eb
- Financial - Zum Steeles Station Stop Eb
- Steeles Ave W at Churchville Rd
- Steeles Ave Opp Polonia Ave
- Steeles Ave W at Clementine Dr
- Steeles Ave W/Of Mavis Rd
- Steeles Ave W E/Of Mavis Rd
- Steeles Ave W Btwn Mavis Rd & Windmill Blvd
- Steeles Ave W at Windmill Blvd
- Steeles Ave W at Mclaughlin Rd S
- Sheridan College
- Sheridan College
- Malta - Zum Steeles Station Stop Eb
- Gateway Terminal at Shoppers World
- Steeles Ave E E/Of Hurontario St

11 bus Time Schedule

11 Steeles Eastbound Route Timetable:

Sunday	5:07 AM - 11:50 PM
Monday	5:07 AM - 11:50 PM
Tuesday	4:25 AM - 11:50 PM
Wednesday	1:45 AM - 11:50 PM
Thursday	1:45 AM - 11:50 PM
Friday	1:45 AM - 11:50 PM
Saturday	1:45 AM - 11:50 PM

11 bus Info

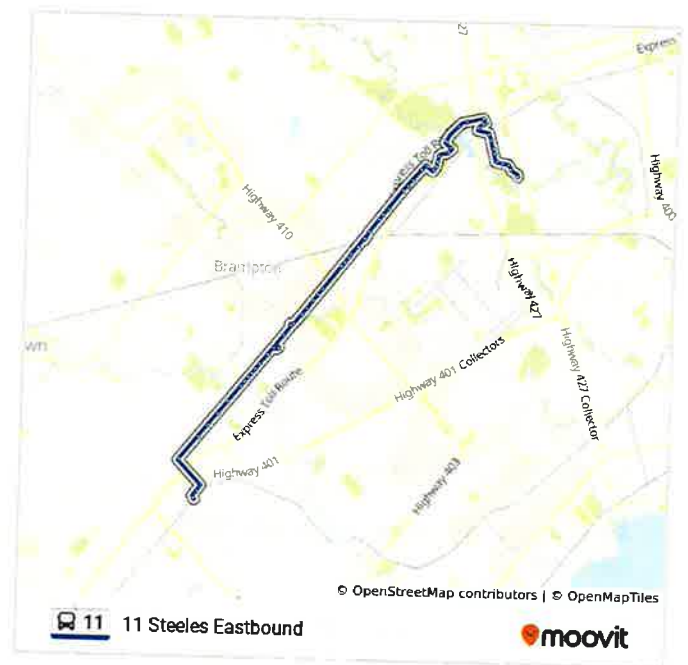
Direction: 11 Steeles Eastbound

Stops: 63

Trip Duration: 70 min

Line Summary:

Steeles Ave E Btwn Hurontario St & Hartford Tr
 Steeles Ave At Hartford Trail
 Kennedy - Zum Steeles Station Stop Eb
 Steeles Ave E/Of Resolution Dr
 Steeles Ave At First Gulf Blvd
 Tomken - Zum Steeles Station Stop Eb
 Steeles Ave E Btwn Tomken Rd & Dixie Rd
 Steeles Ave W/Of Dixie Rd
 Dixie - Zum Steeles Station Stop Eb
 Steeles Ave E at Advance Blvd
 Bramalea Go Station-Route 11/11a/511/A/C Eb
 Stop
 Steeles Ave E/Of Bramalea Rd
 Steeles Ave At Melanie Dr
 Steeles Ave At Melanie Dr
 Torbram - Zum Steeles Station Stop Eb
 Steeles Ave Opp Pearson Convention Centre
 Steeles Ave At Airport Rd
 Steeles Ave E Opp Parkhurst Sq
 Steeles Ave E at 3389 Steeles Ave E (Bombay
 Whse)
 Steeles Ave E at Goreway Dr
 Goreway Dr S/Of Steeles Ave E
 Kenview Blvd E/Of Goreway Dr
 Kenview Blvd at 5 Kenview Blvd
 Kenview Blvd at 11 Kenview Blvd
 Kenview Blvd E/Of Castlview Dr (19 Kenview
 Blvd)
 Kenview Blvd at Parkshore Dr
 Finch Ave N/Of Kenview Blvd
 Finch Ave S/Of Steeles Ave
 Steeles Ave W/Of Hwy 50
 Steeles Ave W/Of Alcide St
 Steeles Ave W/Of Signal Hill Ave



Signal Hill Ave N/Of Steinway Blvd

Steinway Blvd W/Of Signal Hill Ave

Steinway Blvd N/Of Albion Rd

Humberline Dr S/Of Albion Rd

Humberline Dr At Hudersfield Rd

Humberline Dr at 310 Humberline Dr

Humberline Dr N/Of Claireville Dr (S)

Finch Ave E/Of Humberline Dr

Finch Ave Btwn Humberline Dr And Humber
College Bl

Finch Ave At Humber College Blvd

Humber College Blvd S/Of Humberline Dr

Humber College Terminal - Route 11/11a Stop

Direction: 11 Steeles Eb - Gate

19 stops

[VIEW LINE SCHEDULE](#)

- Lisgar Go Station
- Argentia - Zum Steeles Stop Eb
- Winston Churchill - Zum Steeles Station Stop Eb
- Heritage - Zum Steeles Station Stop Eb
- Hereford - Zum Steeles Station Stop Eb
- Mississauga Road - Zum Steeles Station Stop Eb
- Financial - Zum Steeles Station Stop Eb
- Steeles Ave W at Churchville Rd
- Steeles Ave Opp Polonia Ave
- Steeles Ave W at Clementine Dr
- Steeles Ave W/Of Mavis Rd
- Steeles Ave W E/Of Mavis Rd
- Steeles Ave W Btwn Mavis Rd & Windmill Blvd
- Steeles Ave W at Windmill Blvd
- Steeles Ave W at Mclaughlin Rd S
- Sheridan College
- Sheridan College
- Malta - Zum Steeles Station Stop Eb
- Gateway Terminal at Shoppers World

11 bus Time Schedule

11 Steeles Eb - Gate Route Timetable:

Sunday	7:17 AM - 12:48 PM
Monday	7:17 AM - 12:48 PM
Tuesday	7:17 AM - 6:23 PM
Wednesday	7:17 AM - 6:23 PM
Thursday	7:17 AM - 6:23 PM
Friday	7:17 AM - 6:23 PM
Saturday	7:17 AM - 12:48 PM

11 bus Info

Direction: 11 Steeles Eb - Gate

Stops: 19

Trip Duration: 25 min

Line Summary:



Direction: 11 Steeles Westbound

49 stops

[VIEW LINE SCHEDULE](#)

Humber College Terminal - Route 11/11a Stop
Finch Ave West at Woodbine Downs Blvd
Finch Ave W/Of Humber College Blvd
Finch Ave At Humberline Dr
Finch Ave At Longo Circle
Finch Ave N/Of Longo Circle
Kenview Blvd W/Of Finch Ave
Kenview Blvd W/Of Parkshore Dr
Kenview Blvd at 26 Kenview Blvd
Kenview Blvd at 14 Kenview Blvd
Kenview Blvd at Paget Rd
Kenview Blvd at Goreway Dr
Goreway Dr Btwn Kenview Blvd And Steeles Ave E
Steeles Ave At Goreway Dr
Steeles Ave E at Parkhurst Sq
Steeles Ave At Airport Rd
Torbram - Zum Steeles Station Stop Wb
Steeles Ave At Melanie Dr
Steeles Ave At Melanie Dr
Steeles Ave E/Of Bramalea Rd
Bramalea Go Station-Route 11/11a/511/A/C Wb Stop
Steeles Ave W/Of Advance Blvd
Dixie - Zum Steeles Station Stop Wb
Steeles Ave E Btwn Dixie Rd & West Dr
West Drive - Zum Steeles Station Stop Wb
Rutherford - Zum Steeles Station Stop Wb
Steeles Ave E E/Of Resolution Dr
Steeles Ave E/Of Kennedy Rd

11 bus Time Schedule

11 Steeles Westbound Route Timetable:

Sunday	12:02 AM - 11:34 PM
Monday	6:27 AM - 11:34 PM
Tuesday	5:46 AM - 11:41 PM
Wednesday	12:08 AM - 11:41 PM
Thursday	12:08 AM - 11:41 PM
Friday	12:08 AM - 11:41 PM
Saturday	12:08 AM - 11:34 PM

11 bus Info

Direction: 11 Steeles Westbound

Stops: 49

Trip Duration: 68 min

Line Summary:



Steeles Ave At Kennedy Rd
Steeles Ave At Orchard Dr
Steeles Ave E at 152 Steeles Ave
Steeles Ave E/Of Main St
Gateway Terminal at Shoppers World
Mcmurphy - Zum Steeles Station Stop Wb
Sheridan College
Steeles Ave W at Tait Blvd
Steeles Ave W at Beaconsfield Walkway
Chinguacousy - Zum Steeles Station Stop Wb
Steeles Ave W W/Of James Potter Dr
Steeles Ave W at Polonia Ave
Steeles Ave at Churchville Rd
Steeles Ave W E/Of Financial Dr
Financial - Zum Steeles Station Stop Wb
Mississauga Road - Zum Steeles Station Stop Wb
Rivermont - Zum Steeles Station Stop Wb
Heritage - Zum Steeles Station Stop Wb
Winston Churchill - Zum Steeles Station Stop Wb
Argentia - Zum Steeles Stop Wb
Lisgar Go Station

Direction: 11a Steeles Eastbound

45 stops

[VIEW LINE SCHEDULE](#)

Gateway Terminal at Shoppers World
Steeles Ave E E/Of Hurontario St
Steeles Ave E Btwn Hurontario St & Hartford Tr
Steeles Ave At Hartford Trail
Kennedy - Zum Steeles Station Stop Eb
Steeles Ave E/Of Resolution Dr
Steeles Ave At First Gulf Blvd
Tomken - Zum Steeles Station Stop Eb
Steeles Ave E Btwn Tomken Rd & Dixie Rd
Steeles Ave W/Of Dixie Rd
Dixie - Zum Steeles Station Stop Eb
Steeles Ave E at Advance Blvd
Bramalea Go Station-Route 11/11a/511/A/C Eb
Stop
Steeles Ave E/Of Bramalea Rd
Steeles Ave At Melanie Dr
Steeles Ave At Melanie Dr
Torbram - Zum Steeles Station Stop Eb
Steeles Ave Opp Pearson Convention Centre
Steeles Ave At Airport Rd
Steeles Ave E Opp Parkhurst Sq
Steeles Ave E at 3389 Steeles Ave E (Bombay Whse)
Steeles Ave E at Goreway Dr
Goreway Dr S/Of Steeles Ave E
Kenview Blvd E/Of Goreway Dr
Kenview Blvd at 5 Kenview Blvd
Kenview Blvd at 11 Kenview Blvd
Kenview Blvd E/Of Castlview Dr (19 Kenview Blvd)

11 bus Time Schedule

11a Steeles Eastbound Route Timetable:

Sunday	7:51 AM - 10:45 PM
Monday	7:51 AM - 10:45 PM
Tuesday	4:24 AM - 11:57 PM
Wednesday	1:00 AM - 11:57 PM
Thursday	1:00 AM - 11:57 PM
Friday	1:00 AM - 11:57 PM
Saturday	1:00 AM - 11:48 PM

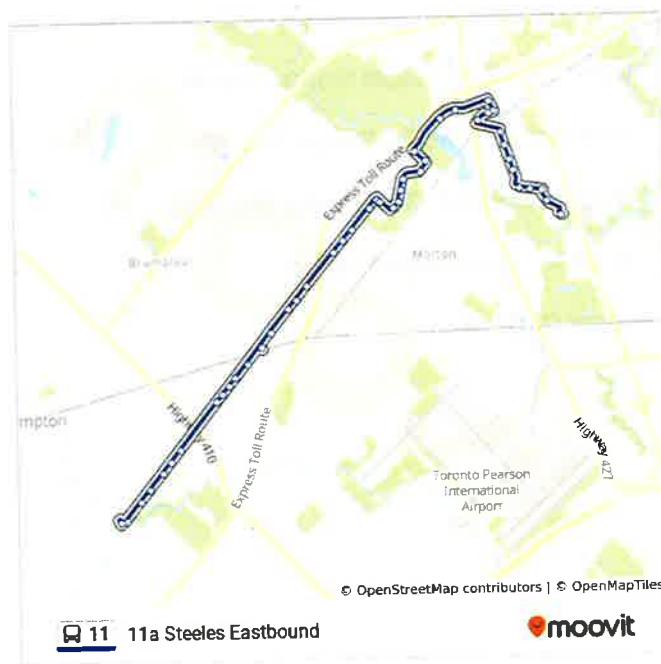
11 bus Info

Direction: 11a Steeles Eastbound

Stops: 45

Trip Duration: 48 min

Line Summary:



Kenview Blvd at Parkshore Dr

Finch Ave N/Of Kenview Blvd

Finch Ave S/Of Steeles Ave

Steeles Ave W/Of Hwy 50

Steeles Ave W/Of Alcide St

Steeles Ave W/Of Signal Hill Ave

Signal Hill Ave N/Of Steinway Blvd

Steinway Blvd W/Of Signal Hill Ave

Steinway Blvd N/Of Albion Rd

Humberline Dr S/Of Albion Rd

Humberline Dr At Hundersfield Rd

Humberline Dr at 310 Humberline Dr

Humberline Dr N/Of Claireville Dr (S)

Finch Ave E/Of Humberline Dr

Finch Ave Btwn Humberline Dr And Humber
College Bl

Finch Ave At Humber College Blvd

Humber College Blvd S/Of Humberline Dr

Humber College Terminal - Route 11/11a Stop

Direction: 11a Steeles Westbound

33 stops

[VIEW LINE SCHEDULE](#)

Humber College Terminal - Route 11/11a Stop

Finch Ave West at Woodbine Downs Blvd

Finch Ave W/Of Humber College Blvd

Finch Ave At Humberline Dr

Finch Ave At Longo Circle

Finch Ave N/Of Longo Circle

Kenview Blvd W/Of Finch Ave

Kenview Blvd W/Of Parkshore Dr

Kenview Blvd at 26 Kenview Blvd

Kenview Blvd at 14 Kenview Blvd

Kenview Blvd at Paget Rd

Kenview Blvd at Goreway Dr

Goreway Dr Btwn Kenview Blvd And Steeles Ave E

Steeles Ave At Goreway Dr

Steeles Ave E at Parkhurst Sq

Steeles Ave At Airport Rd

Torbram - Zum Steeles Station Stop Wb

Steeles Ave At Melanie Dr

Steeles Ave At Melanie Dr

Steeles Ave E/Of Bramalea Rd

Bramalea Go Station-Route 11/11a/511/A/C Wb Stop

Steeles Ave W/Of Advance Blvd

Dixie - Zum Steeles Station Stop Wb

Steeles Ave E Btwn Dixie Rd & West Dr

West Drive - Zum Steeles Station Stop Wb

Rutherford - Zum Steeles Station Stop Wb

Steeles Ave E E/Of Resolution Dr

Steeles Ave E/Of Kennedy Rd

11 bus Time Schedule

11a Steeles Westbound Route Timetable:

Sunday	1:02 AM - 11:56 PM
Monday	6:55 AM - 11:56 PM
Tuesday	5:05 AM - 11:56 PM
Wednesday	12:11 AM - 11:56 PM
Thursday	12:11 AM - 11:56 PM
Friday	12:11 AM - 11:56 PM
Saturday	12:11 AM - 11:56 PM

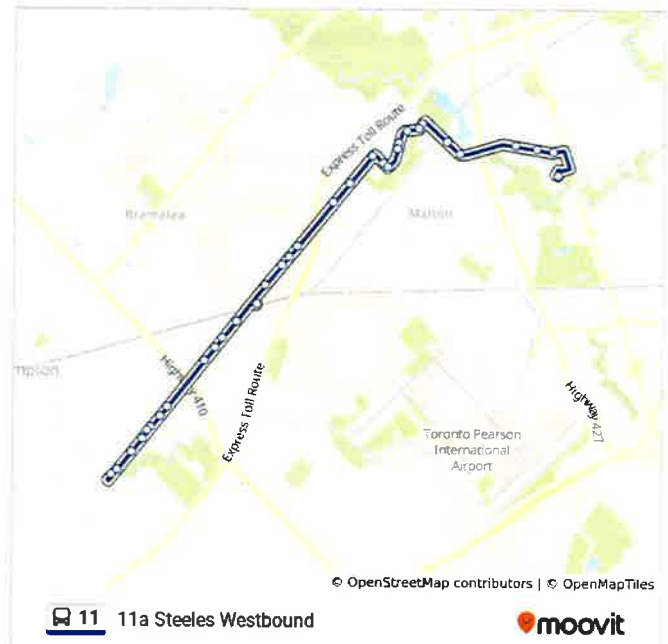
11 bus Info

Direction: 11a Steeles Westbound

Stops: 33

Trip Duration: 45 min

Line Summary:



Steeles Ave At Kennedy Rd

Steeles Ave At Orchard Dr

Steeles Ave E at 152 Steeles Ave

Steeles Ave E/Of Main St

Gateway Terminal at Shoppers World

Direction: 11d Steeles Eb - Gate

21 stops

[VIEW LINE SCHEDULE](#)

- Lisgar Go Station
- Argentia - Zum Steeles Stop Eb
- Winston Churchill Blvd N/Of Steeles Ave
- Winston Churchill Blvd at Maple Lodge Farms
- Winston Churchill - Zum Steeles Station Stop Eb
- Heritage - Zum Steeles Station Stop Eb
- Hereford - Zum Steeles Station Stop Eb
- Mississauga Road - Zum Steeles Station Stop Eb
- Financial - Zum Steeles Station Stop Eb
- Steeles Ave W at Churchville Rd
- Steeles Ave Opp Polonia Ave
- Steeles Ave W at Clementine Dr
- Steeles Ave W/Of Mavis Rd
- Steeles Ave W E/Of Mavis Rd
- Steeles Ave W Btwn Mavis Rd & Windmill Blvd
- Steeles Ave W at Windmill Blvd
- Steeles Ave W at Mclaughlin Rd S
- Sheridan College
- Sheridan College
- Malta - Zum Steeles Station Stop Eb
- Gateway Terminal at Shoppers World

11 bus Time Schedule

11d Steeles Eb - Gate Route Timetable:

Sunday	Not Operational
Monday	Not Operational
Tuesday	2:23 PM - 11:36 PM
Wednesday	12:15 AM - 11:36 PM
Thursday	12:15 AM - 11:36 PM
Friday	12:15 AM - 11:36 PM
Saturday	12:15 AM - 12:21 AM

11 bus Info

Direction: 11d Steeles Eb - Gate

Stops: 21

Trip Duration: 30 min

Line Summary:



Direction: 11d Steeles Eb - Humber

65 stops

[VIEW LINE SCHEDULE](#)

- Lisgar Go Station
- Argentia - Zum Steeles Stop Eb
- Winston Churchill Blvd N/Of Steeles Ave
- Winston Churchill Blvd at Maple Lodge Farms
- Winston Churchill - Zum Steeles Station Stop Eb
- Heritage - Zum Steeles Station Stop Eb
- Hereford - Zum Steeles Station Stop Eb
- Mississauga Road - Zum Steeles Station Stop Eb
- Financial - Zum Steeles Station Stop Eb
- Steeles Ave W at Churchville Rd
- Steeles Ave Opp Polonia Ave
- Steeles Ave W at Clementine Dr
- Steeles Ave W/Of Mavis Rd
- Steeles Ave W E/Of Mavis Rd
- Steeles Ave W Btwn Mavis Rd & Windmill Blvd
- Steeles Ave W at Windmill Blvd
- Steeles Ave W at Mclaughlin Rd S
- Sheridan College
- Sheridan College
- Malta - Zum Steeles Station Stop Eb
- Gateway Terminal at Shoppers World
- Steeles Ave E E/Of Hurontario St
- Steeles Ave E Btwn Hurontario St & Hartford Tr
- Steeles Ave At Hartford Trail
- Kennedy - Zum Steeles Station Stop Eb
- Steeles Ave E/Of Resolution Dr
- Steeles Ave At First Gulf Blvd
- Tomken - Zum Steeles Station Stop Eb
- Steeles Ave E Btwn Tomken Rd & Dixie Rd

11 bus Time Schedule

11d Steeles Eb - Humber Route Timetable:

Sunday	Not Operational
Monday	Not Operational
Tuesday	7:24 AM
Wednesday	7:24 AM
Thursday	7:24 AM
Friday	7:24 AM
Saturday	Not Operational

11 bus Info

Direction: 11d Steeles Eb - Humber

Stops: 65

Trip Duration: 88 min

Line Summary:



Steeles Ave W/Of Dixie Rd
Dixie - Zum Steeles Station Stop Eb
Steeles Ave E at Advance Blvd
Bramalea Go Station-Route 11/11a/511/A/C Eb
Stop
Steeles Ave E/Of Bramalea Rd
Steeles Ave At Melanie Dr
Steeles Ave At Melanie Dr
Torbram - Zum Steeles Station Stop Eb
Steeles Ave Opp Pearson Convention Centre
Steeles Ave At Airport Rd
Steeles Ave E Opp Parkhurst Sq
Steeles Ave E at 3389 Steeles Ave E (Bombay
Whse)
Steeles Ave E at Goreway Dr
Goreway Dr S/Of Steeles Ave E
Kenview Blvd E/Of Goreway Dr
Kenview Blvd at 5 Kenview Blvd
Kenview Blvd at 11 Kenview Blvd
Kenview Blvd E/Of Castlevue Dr (19 Kenview
Blvd)
Kenview Blvd at Parkshore Dr
Finch Ave N/Of Kenview Blvd
Finch Ave S/Of Steeles Ave
Steeles Ave W/Of Hwy 50
Steeles Ave W/Of Alcide St
Steeles Ave W/Of Signal Hill Ave
Signal Hill Ave N/Of Steinway Blvd
Steinway Blvd W/Of Signal Hill Ave
Steinway Blvd N/Of Albion Rd
Humberline Dr S/Of Albion Rd
Humberline Dr At Hundersfield Rd
Humberline Dr at 310 Humberline Dr
Humberline Dr N/Of Claireville Dr (S)

Finch Ave E/Of Humberline Dr

Finch Ave Btwn Humberline Dr And Humber
College Bl

Finch Ave At Humber College Blvd

Humber College Blvd S/Of Humberline Dr

Humber College Terminal - Route 11/11a Stop

Direction: 11d Steeles Wb - Lisgar

19 stops

[VIEW LINE SCHEDULE](#)

- Gateway Terminal at Shoppers World
- Mcmurchy - Zum Steeles Station Stop Wb
- Sheridan College
- Steeles Ave W at Tait Blvd
- Steeles Ave W at Beaconsfield Walkway
- Chinguacousy - Zum Steeles Station Stop Wb
- Steeles Ave W W/Of James Potter Dr
- Steeles Ave W at Polonia Ave
- Steeles Ave at Churchville Rd
- Steeles Ave W E/Of Financial Dr
- Financial - Zum Steeles Station Stop Wb
- Mississauga Road - Zum Steeles Station Stop Wb
- Rivermont - Zum Steeles Station Stop Wb
- Heritage - Zum Steeles Station Stop Wb
- Winston Churchill Blvd N/Of Steeles Ave
- Winston Churchill Blvd at Maple Lodge Farms
- Winston Churchill - Zum Steeles Station Stop Wb
- Argentia - Zum Steeles Stop Wb
- Lisgar Go Station

11 bus Time Schedule

11d Steeles Wb - Lisgar Route Timetable:

Sunday	Not Operational
Monday	Not Operational
Tuesday	5:50 AM - 9:50 PM
Wednesday	5:50 AM - 9:50 PM
Thursday	5:50 AM - 9:50 PM
Friday	5:50 AM - 9:50 PM
Saturday	Not Operational

11 bus Info

Direction: 11d Steeles Wb - Lisgar

Stops: 19

Trip Duration: 34 min

Line Summary:



11 bus time schedules and route maps are available in an offline PDF at moovitapp.com. Use the [Moovit App](#) to see live bus times, train schedule or subway schedule, and step-by-step directions for all public transit in Toronto.

[About Moovit](#) • [MaaS Solutions](#) • [Supported Countries](#) • [Mooviter Community](#)

© 2022 Moovit - All Rights Reserved

Check Live Arrival Times



511

511 Zum Steeles East-Gtt

View In Website Mode

The 511 bus line (511 Zum Steeles East-Gtt) has 7 routes. For regular weekdays, their operation hours are: (1) 511 Zum Steeles East-Gtt: 5:32 PM - 6:08 PM (2) 511 Zum Steeles Eastbound: 4:23 AM - 11:45 PM (3) 511 Zum Steeles Westbound: 12:36 AM - 10:36 PM (4) 511a Zum Steeles East: 12:17 AM - 11:57 PM (5) 511a Zum Steeles West: 12:16 AM - 11:56 PM (6) 511c Zum Steeles East: 5:11 AM - 6:59 PM (7) 511c Zum Steeles West: 6:30 AM - 6:14 PM Use the Moovit App to find the closest 511 bus station near you and find out when is the next 511 bus arriving.

Direction: 511 Zum Steeles East-Gtt

11 stops

[VIEW LINE SCHEDULE](#)

- Lisgar Go Station
- Argentia - Zum Steeles Stop Eb
- Winston Churchill - Zum Steeles Station Stop Eb
- Heritage - Zum Steeles Station Stop Eb
- Hereford - Zum Steeles Station Stop Eb
- Mississauga Road - Zum Steeles Station Stop Eb
- Financial - Zum Steeles Station Stop Eb
- Steeles Ave W E/Of Mavis Rd
- Sheridan College
- Malta - Zum Steeles Station Stop Eb
- Gateway Terminal at Shoppers World

511 bus Time Schedule

511 Zum Steeles East-Gtt Route Timetable:

Sunday	Not Operational
Monday	Not Operational
Tuesday	5:32 PM - 6:08 PM
Wednesday	5:32 PM - 6:08 PM
Thursday	5:32 PM - 6:08 PM
Friday	5:32 PM - 6:08 PM
Saturday	Not Operational

511 bus Info

Direction: 511 Zum Steeles East-Gtt

Stops: 11

Trip Duration: 29 min

Line Summary:



Direction: 511 Zum Steeles Eastbound

23 stops

[VIEW LINE SCHEDULE](#)

- Lisgar Go Station
- Argentia - Zum Steeles Stop Eb
- Winston Churchill - Zum Steeles Station Stop Eb
- Heritage - Zum Steeles Station Stop Eb
- Hereford - Zum Steeles Station Stop Eb
- Mississauga Road - Zum Steeles Station Stop Eb
- Financial - Zum Steeles Station Stop Eb
- Steeles Ave W E/Of Mavis Rd
- Sheridan College
- Malta - Zum Steeles Station Stop Eb
- Gateway Terminal at Shoppers World
- Kennedy - Zum Steeles Station Stop Eb
- Steeles Ave At First Gulf Blvd
- Tomken - Zum Steeles Station Stop Eb
- Dixie - Zum Steeles Station Stop Eb
- Bramalea Go Station-Route 11/11a/511/A/C Eb Stop
- Torbram - Zum Steeles Station Stop Eb
- Steeles Ave At Airport Rd
- Steeles Ave At Goreway Dr
- Finch - Zum Steeles Station Stop Eb
- Darcel - Zum Steeles Stop
- Finch Ave At Humber College Blvd
- Humber College Terminal- Zum Steeles 511/511a/511c

511 bus Time Schedule

511 Zum Steeles Eastbound Route Timetable:

Sunday	4:23 AM - 10:20 PM
Monday	4:23 AM - 10:20 PM
Tuesday	4:23 AM - 11:45 PM
Wednesday	4:23 AM - 11:45 PM
Thursday	4:23 AM - 11:45 PM
Friday	4:23 AM - 11:45 PM
Saturday	4:23 AM - 10:20 PM

511 bus Info

Direction: 511 Zum Steeles Eastbound

Stops: 23

Trip Duration: 62 min

Line Summary:



Direction: 511 Zum Steeles Westbound

23 stops

[VIEW LINE SCHEDULE](#)

Humber College Terminal- Zum Steeles
511/511a/511c

Finch Ave W/Of Humber College Blvd

Finch Ave At Longo Circle

Finch - Zum Steeles Station Stop Wb

Steeles Ave At Goreway Dr

Steeles Ave At Airport Rd

Torbram - Zum Steeles Station Stop Wb

Bramalea Go Station-Route 11/11a/511/A/C Wb
Stop

Dixie - Zum Steeles Station Stop Wb

West Drive - Zum Steeles Station Stop Wb

Rutherford - Zum Steeles Station Stop Wb

Steeles Ave At Kennedy Rd

Gateway Terminal at Shoppers World

Mcmurphy - Zum Steeles Station Stop Wb

Sheridan College

Chinguacousy - Zum Steeles Station Stop Wb

Financial - Zum Steeles Station Stop Wb

Mississauga Road - Zum Steeles Station Stop Wb

Rivermont - Zum Steeles Station Stop Wb

Heritage - Zum Steeles Station Stop Wb

Winston Churchill - Zum Steeles Station Stop Wb

Argentia - Zum Steeles Stop Wb

Lisgar Go Station

511 bus Time Schedule

511 Zum Steeles Westbound Route Timetable:

Sunday	5:35 AM - 9:22 PM
Monday	5:35 AM - 9:22 PM
Tuesday	5:24 AM - 10:36 PM
Wednesday	12:36 AM - 10:36 PM
Thursday	12:36 AM - 10:36 PM
Friday	12:36 AM - 10:36 PM
Saturday	12:36 AM - 9:22 PM

511 bus Info

Direction: 511 Zum Steeles Westbound

Stops: 23

Trip Duration: 60 min

Line Summary:



Direction: 511a Zum Steeles East

13 stops

[VIEW LINE SCHEDULE](#)

- Gateway Terminal at Shoppers World
- Kennedy - Zum Steeles Station Stop Eb
- Steeles Ave At First Gulf Blvd
- Tomken - Zum Steeles Station Stop Eb
- Dixie - Zum Steeles Station Stop Eb
- Bramalea Go Station-Route 11/11a/511/A/C Eb Stop
- Torbram - Zum Steeles Station Stop Eb
- Steeles Ave At Airport Rd
- Steeles Ave At Goreway Dr
- Finch - Zum Steeles Station Stop Eb
- Darcel - Zum Steeles Stop
- Finch Ave At Humber College Blvd
- Humber College Terminal- Zum Steeles 511/511a/511c

511 bus Time Schedule

511a Zum Steeles East Route Timetable:

Sunday	7:04 AM - 9:44 PM
Monday	7:04 AM - 9:44 PM
Tuesday	7:04 AM - 11:57 PM
Wednesday	12:17 AM - 11:57 PM
Thursday	12:17 AM - 11:57 PM
Friday	12:17 AM - 11:57 PM
Saturday	12:17 AM - 10:15 PM

511 bus Info

Direction: 511a Zum Steeles East

Stops: 13

Trip Duration: 35 min

Line Summary:



Direction: 511a Zum Steeles West

13 stops

[VIEW LINE SCHEDULE](#)

- Humber College Terminal- Zum Steeles 511/511a/511c
- Finch Ave W/Of Humber College Blvd
- Finch Ave At Longo Circle
- Finch - Zum Steeles Station Stop Wb
- Steeles Ave At Goreway Dr
- Steeles Ave At Airport Rd
- Torbram - Zum Steeles Station Stop Wb
- Bramalea Go Station-Route 11/11a/511/A/C Wb Stop
- Dixie - Zum Steeles Station Stop Wb
- West Drive - Zum Steeles Station Stop Wb
- Rutherford - Zum Steeles Station Stop Wb
- Steeles Ave At Kennedy Rd
- Gateway Terminal at Shoppers World

511 bus Time Schedule

511a Zum Steeles West Route Timetable:

Sunday	7:25 AM - 9:45 PM
Monday	7:25 AM - 9:45 PM
Tuesday	7:25 AM - 11:56 PM
Wednesday	12:16 AM - 11:56 PM
Thursday	12:16 AM - 11:56 PM
Friday	12:16 AM - 11:56 PM
Saturday	12:16 AM - 10:40 PM

511 bus Info

Direction: 511a Zum Steeles West

Stops: 13

Trip Duration: 35 min

Line Summary:



Direction: 511c Zum Steeles East

15 stops

[VIEW LINE SCHEDULE](#)

- Sheridan College
- Malta - Zum Steeles Station Stop Eb
- Gateway Terminal at Shoppers World
- Kennedy - Zum Steeles Station Stop Eb
- Steeles Ave At First Gulf Blvd
- Tomken - Zum Steeles Station Stop Eb
- Dixie - Zum Steeles Station Stop Eb
- Bramalea Go Station-Route 11/11a/511/A/C Eb Stop
- Torbram - Zum Steeles Station Stop Eb
- Steeles Ave At Airport Rd
- Steeles Ave At Goreway Dr
- Finch - Zum Steeles Station Stop Eb
- Darcel - Zum Steeles Stop
- Finch Ave At Humber College Blvd
- Humber College Terminal- Zum Steeles 511/511a/511c

511 bus Time Schedule

511c Zum Steeles East Route Timetable:

Sunday	Not Operational
Monday	Not Operational
Tuesday	5:11 AM - 6:59 PM
Wednesday	5:11 AM - 6:59 PM
Thursday	5:11 AM - 6:59 PM
Friday	5:11 AM - 6:59 PM
Saturday	Not Operational

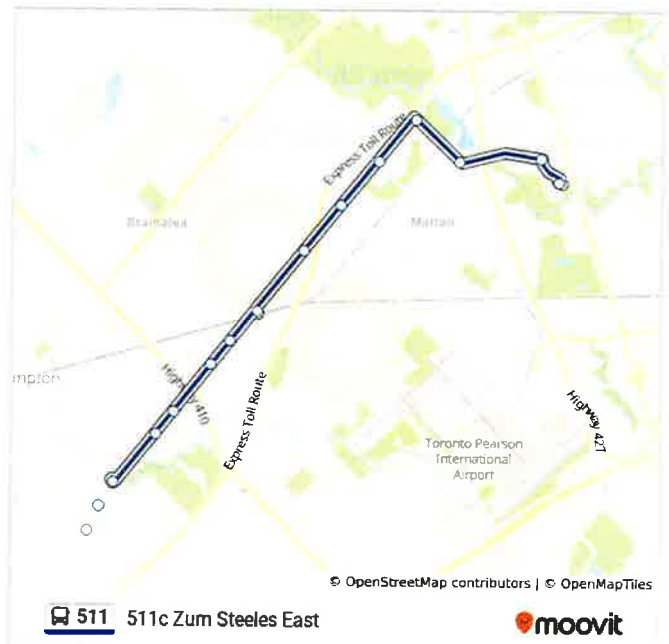
511 bus Info

Direction: 511c Zum Steeles East

Stops: 15

Trip Duration: 50 min

Line Summary:



Direction: 511c Zum Steeles West

15 stops

[VIEW LINE SCHEDULE](#)

- Humber College Terminal- Zum Steeles
511/511a/511c
- Finch Ave W/Of Humber College Blvd
- Finch Ave At Longo Circle
- Finch - Zum Steeles Station Stop Wb
- Steeles Ave At Goreway Dr
- Steeles Ave At Airport Rd
- Torbram - Zum Steeles Station Stop Wb
- Bramalea Go Station-Route 11/11a/511/A/C Wb
Stop
- Dixie - Zum Steeles Station Stop Wb
- West Drive - Zum Steeles Station Stop Wb
- Rutherford - Zum Steeles Station Stop Wb
- Steeles Ave At Kennedy Rd
- Gateway Terminal at Shoppers World
- Mcmurphy - Zum Steeles Station Stop Wb
- Sheridan College

511 bus Time Schedule

511c Zum Steeles West Route Timetable:

Sunday	Not Operational
Monday	Not Operational
Tuesday	6:30 AM - 6:14 PM
Wednesday	6:30 AM - 6:14 PM
Thursday	6:30 AM - 6:14 PM
Friday	6:30 AM - 6:14 PM
Saturday	Not Operational

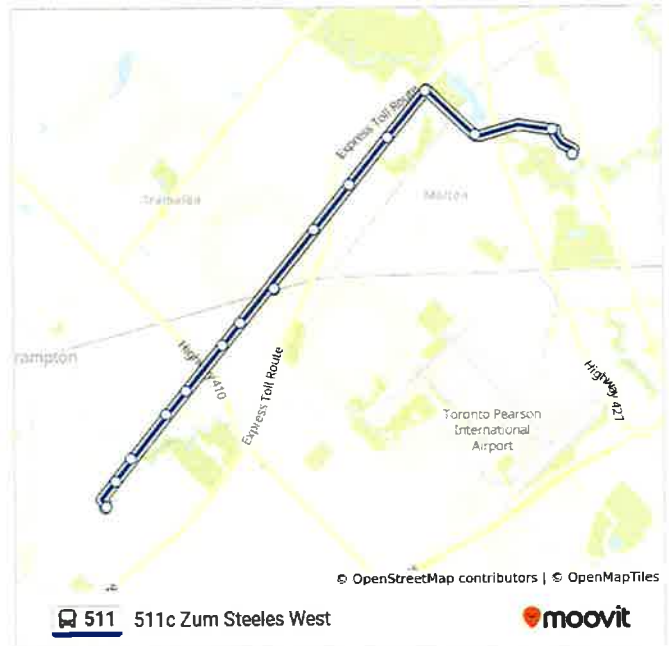
511 bus Info

Direction: 511c Zum Steeles West

Stops: 15

Trip Duration: 47 min

Line Summary:



511 bus time schedules and route maps are available in an offline PDF at moovitapp.com. Use the [Moovit App](#) to see live bus times, train schedule or subway schedule, and step-by-step directions for all public transit in Toronto.

[About Moovit](#) • [MaaS Solutions](#) • [Supported Countries](#) • [Mooviter Community](#)

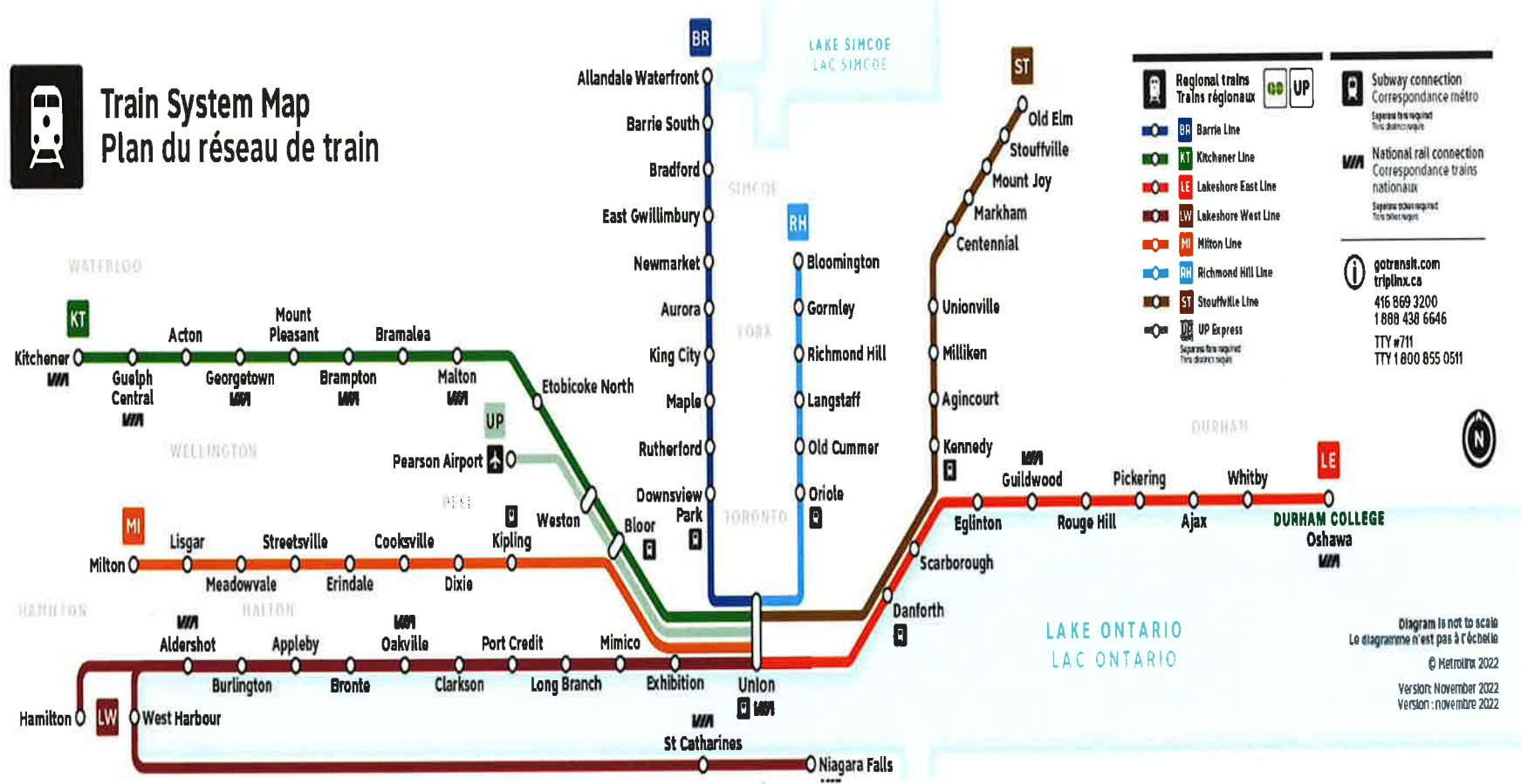
© 2022 Moovit - All Rights Reserved

Check Live Arrival Times





Train System Map Plan du réseau de train



Regional trains / Trains régionaux

- BR Barrie Line
- KT Kitchener Line
- LE Lakeshore East Line
- LW Lakeshore West Line
- MI Milton Line
- RH Richmond Hill Line
- ST Stouffville Line
- UP Express

Subway connection / Correspondance métro
Separate fare required / Tarif distinct requis

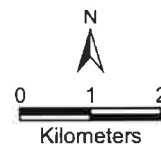
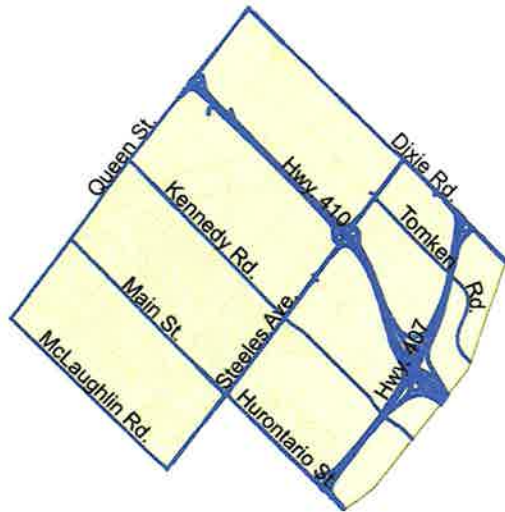
National rail connection / Correspondance trains nationaux
Separate fares required / Tarif distinct requis

gotransit.com / triplinx.ca
416 869 3200
1 800 438 6646
TTY #711
TTY 1 800 855 0511

Diagram is not to scale
Le diagramme n'est pas à l'échelle

© Metrolinx 2022
Version: November 2022
Version: novembre 2022

Appendix C
2016 TTS Data (City of Brampton, Ward 3)

**CITY OF BRAMPTON
WARD 3**

WARD 3
HOUSEHOLD CHARACTERISTICS

Households	Dwelling Type			Household Size					Number of Available Vehicles					Household Averages				
	House	Townhouse	Apartment	1	2	3	4	5+	0	1	2	3	4+	Persons	Workers	Drivers	Vehicles	Trips/Day
17,700	33%	8%	59%	26%	31%	18%	15%	10%	14%	46%	31%	6%	3%	2.6	1.3	1.7	1.4	4.7

POPULATION CHARACTERISTICS

Population	Age							Daily Trips per Person (age 11+)	Daily Work Trips per Worker	Population	Employment Type						
	0-10	11-15	16-25	26-45	46-64	65+	Median				Full Time	Part Time	At Home	Student	Licensed	Transit Pass	
	45,400	12%	5%	14%	27%	27%	15%				39.8	2.1	0.77	23,200	45%	6%	3%
											Male						
											22,200	45%	6%	3%	22%	71%	26%
											Female						
											23,200	32%	9%	3%	19%	61%	27%

TRIPS MADE BY RESIDENTS OF CITY OF BRAMPTON - WARD 3

Time Period	Trips	% 24hr	Trip Purpose				Mode of Travel							Median Trip Length (km)			
			HB-W	HB-S	HB-D	N-HB	Driver	Pass.	Transit	GO Train	Walk & Cycle	Other	Driver	Pass.	Transit	GO Train	
6-9 AM	19,900	24.1%	52%	18%	20%	9%	65%	11%	10%	2%	9%	3%	8.0	3.9	8.4	29.2	
24 Hrs	82,800		37%	11%	38%	14%	65%	13%	11%	1%	7%	3%	6.2	3.6	7.2	29.5	

TRIPS MADE TO CITY OF BRAMPTON - WARD 3 - BY RESIDENTS OF THE TTS AREA

Time Period	Trips	% 24 hr	Trip Purpose				Mode of Travel							Median Trip Length (km)			
			Work	School	Home	Other	Driver	Pass.	Transit	GO Train	Walk & Cycle	Other	Driver	Pass.	Transit	GO Train	
6-9 AM	33,900	29%	63%	17%	3%	16%	70%	15%	4%	*	5%	6%	9.4	5.0	5.5	*	
24 Hrs	117,200		30%	5%	30%	34%	69%	16%	7%	0%	4%	3%	7.0	4.7	5.8	29.5	