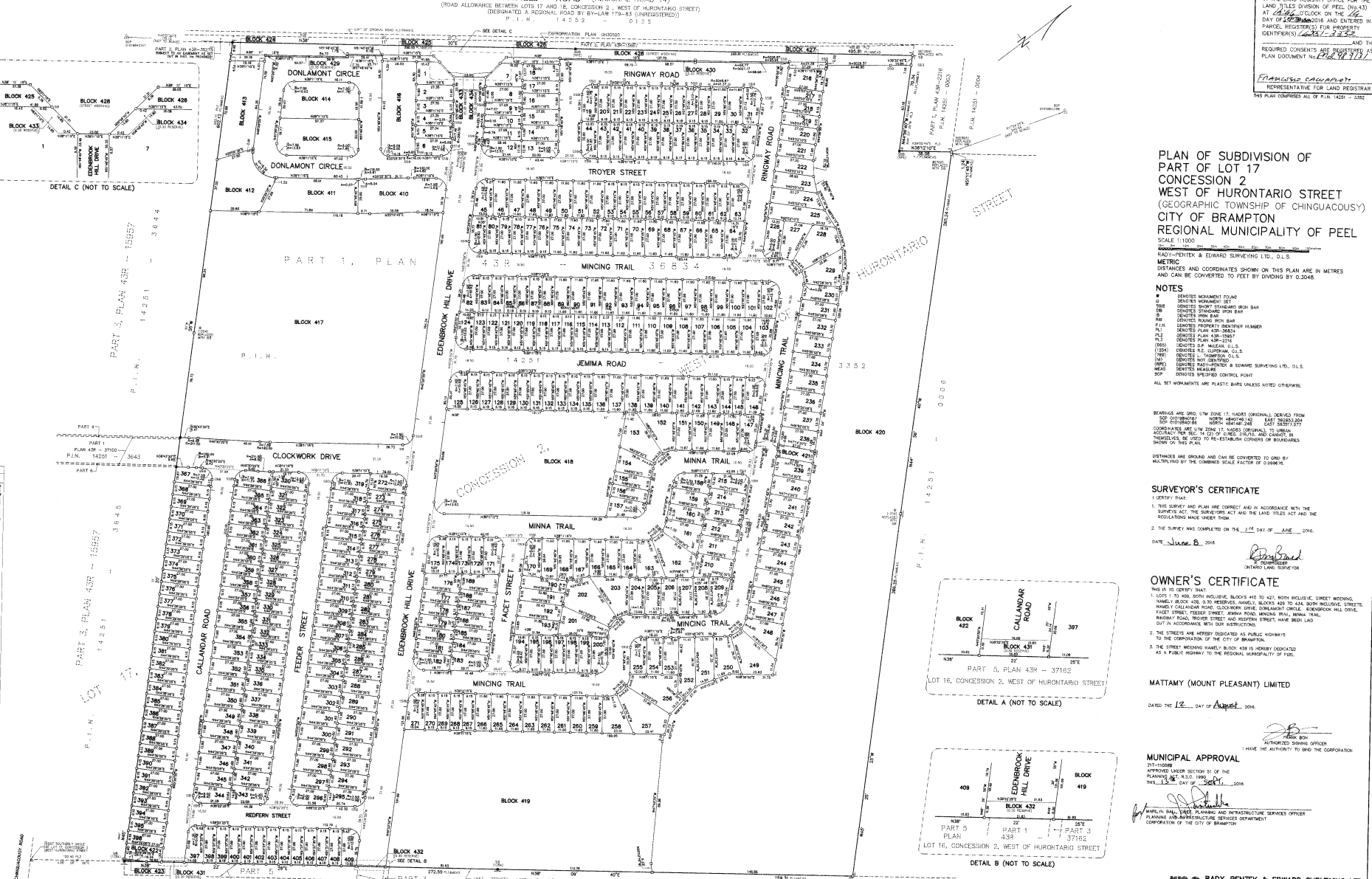


I CERTIFY THAT THIS PLAN IS REGISTERED IN THE LAND REGISTER'S OFFICE FOR THE LAND TITLES DIVISION OF PEEL (REG-43) AT 2:59:59 PM ON THE 12th DAY OF August 2016 AND ENTERED IN PARCEL REGISTRY FOR PROPERTY IDENTIFIERS: 42421, 3335

AND THE PLAN DOCUMENT NO. P43-9173

Francoise Cauchon
REPRESENTATIVE FOR LAND REGISTRAR

CURVE DATA	CURVE		BEARING
	ANGLE (DEGREES)	RADIUS (METERS)	
1	90.00	1.00	N89°15'00"W
2	90.00	1.00	N00°00'00"W
3	90.00	1.00	S89°15'00"W
4	90.00	1.00	S00°00'00"W
5	90.00	1.00	N89°15'00"W
6	90.00	1.00	N00°00'00"W
7	90.00	1.00	S89°15'00"W
8	90.00	1.00	S00°00'00"W
9	90.00	1.00	N89°15'00"W
10	90.00	1.00	N00°00'00"W
11	90.00	1.00	S89°15'00"W
12	90.00	1.00	S00°00'00"W
13	90.00	1.00	N89°15'00"W
14	90.00	1.00	N00°00'00"W
15	90.00	1.00	S89°15'00"W
16	90.00	1.00	S00°00'00"W
17	90.00	1.00	N89°15'00"W
18	90.00	1.00	N00°00'00"W
19	90.00	1.00	S89°15'00"W
20	90.00	1.00	S00°00'00"W
21	90.00	1.00	N89°15'00"W
22	90.00	1.00	N00°00'00"W
23	90.00	1.00	S89°15'00"W
24	90.00	1.00	S00°00'00"W
25	90.00	1.00	N89°15'00"W
26	90.00	1.00	N00°00'00"W
27	90.00	1.00	S89°15'00"W
28	90.00	1.00	S00°00'00"W
29	90.00	1.00	N89°15'00"W
30	90.00	1.00	N00°00'00"W
31	90.00	1.00	S89°15'00"W
32	90.00	1.00	S00°00'00"W
33	90.00	1.00	N89°15'00"W
34	90.00	1.00	N00°00'00"W
35	90.00	1.00	S89°15'00"W
36	90.00	1.00	S00°00'00"W
37	90.00	1.00	N89°15'00"W
38	90.00	1.00	N00°00'00"W
39	90.00	1.00	S89°15'00"W
40	90.00	1.00	S00°00'00"W



PLAN OF SUBDIVISION OF PART OF LOT 17 CONCESSION 2 WEST OF HURONTARIO STREET (GEOGRAPHIC TOWNSHIP OF CHINGUACOUSY) CITY OF BRAMPTON REGIONAL MUNICIPALITY OF PEEL

SCALE 1:1000

RADY-PENTEK & EDWARD SURVEYING LTD., O.L.S.

METRIC DISTANCES AND COORDINATES SHOWN ON THIS PLAN ARE IN METRES AND CAN BE CONVERTED TO FEET BY DIVIDING BY 0.3048.

- NOTES**
- 1. IDENTIFIED MONUMENT FOUND
 - 2. IDENTIFIED MONUMENT SET
 - 3. IDENTIFIED SPLIT CORNER MONUMENT
 - 4. IDENTIFIED MONUMENT FOR BAY
 - 5. IDENTIFIED SIGN FOR BAY
 - 6. IDENTIFIED SIGN FOR BAY
 - 7. IDENTIFIED SIGN FOR BAY
 - 8. IDENTIFIED SIGN FOR BAY
 - 9. IDENTIFIED SIGN FOR BAY
 - 10. IDENTIFIED SIGN FOR BAY
 - 11. IDENTIFIED SIGN FOR BAY
 - 12. IDENTIFIED SIGN FOR BAY
 - 13. IDENTIFIED SIGN FOR BAY
 - 14. IDENTIFIED SIGN FOR BAY
 - 15. IDENTIFIED SIGN FOR BAY
 - 16. IDENTIFIED SIGN FOR BAY
 - 17. IDENTIFIED SIGN FOR BAY
 - 18. IDENTIFIED SIGN FOR BAY
 - 19. IDENTIFIED SIGN FOR BAY
 - 20. IDENTIFIED SIGN FOR BAY
 - 21. IDENTIFIED SIGN FOR BAY
 - 22. IDENTIFIED SIGN FOR BAY
 - 23. IDENTIFIED SIGN FOR BAY
 - 24. IDENTIFIED SIGN FOR BAY
 - 25. IDENTIFIED SIGN FOR BAY
 - 26. IDENTIFIED SIGN FOR BAY
 - 27. IDENTIFIED SIGN FOR BAY
 - 28. IDENTIFIED SIGN FOR BAY
 - 29. IDENTIFIED SIGN FOR BAY
 - 30. IDENTIFIED SIGN FOR BAY
 - 31. IDENTIFIED SIGN FOR BAY
 - 32. IDENTIFIED SIGN FOR BAY
 - 33. IDENTIFIED SIGN FOR BAY
 - 34. IDENTIFIED SIGN FOR BAY
 - 35. IDENTIFIED SIGN FOR BAY
 - 36. IDENTIFIED SIGN FOR BAY
 - 37. IDENTIFIED SIGN FOR BAY
 - 38. IDENTIFIED SIGN FOR BAY
 - 39. IDENTIFIED SIGN FOR BAY
 - 40. IDENTIFIED SIGN FOR BAY
 - 41. IDENTIFIED SIGN FOR BAY
 - 42. IDENTIFIED SIGN FOR BAY
 - 43. IDENTIFIED SIGN FOR BAY
 - 44. IDENTIFIED SIGN FOR BAY
 - 45. IDENTIFIED SIGN FOR BAY
 - 46. IDENTIFIED SIGN FOR BAY
 - 47. IDENTIFIED SIGN FOR BAY
 - 48. IDENTIFIED SIGN FOR BAY
 - 49. IDENTIFIED SIGN FOR BAY
 - 50. IDENTIFIED SIGN FOR BAY
 - 51. IDENTIFIED SIGN FOR BAY
 - 52. IDENTIFIED SIGN FOR BAY
 - 53. IDENTIFIED SIGN FOR BAY
 - 54. IDENTIFIED SIGN FOR BAY
 - 55. IDENTIFIED SIGN FOR BAY
 - 56. IDENTIFIED SIGN FOR BAY
 - 57. IDENTIFIED SIGN FOR BAY
 - 58. IDENTIFIED SIGN FOR BAY
 - 59. IDENTIFIED SIGN FOR BAY
 - 60. IDENTIFIED SIGN FOR BAY
 - 61. IDENTIFIED SIGN FOR BAY
 - 62. IDENTIFIED SIGN FOR BAY
 - 63. IDENTIFIED SIGN FOR BAY
 - 64. IDENTIFIED SIGN FOR BAY
 - 65. IDENTIFIED SIGN FOR BAY
 - 66. IDENTIFIED SIGN FOR BAY
 - 67. IDENTIFIED SIGN FOR BAY
 - 68. IDENTIFIED SIGN FOR BAY
 - 69. IDENTIFIED SIGN FOR BAY
 - 70. IDENTIFIED SIGN FOR BAY
 - 71. IDENTIFIED SIGN FOR BAY
 - 72. IDENTIFIED SIGN FOR BAY
 - 73. IDENTIFIED SIGN FOR BAY
 - 74. IDENTIFIED SIGN FOR BAY
 - 75. IDENTIFIED SIGN FOR BAY
 - 76. IDENTIFIED SIGN FOR BAY
 - 77. IDENTIFIED SIGN FOR BAY
 - 78. IDENTIFIED SIGN FOR BAY
 - 79. IDENTIFIED SIGN FOR BAY
 - 80. IDENTIFIED SIGN FOR BAY
 - 81. IDENTIFIED SIGN FOR BAY
 - 82. IDENTIFIED SIGN FOR BAY
 - 83. IDENTIFIED SIGN FOR BAY
 - 84. IDENTIFIED SIGN FOR BAY
 - 85. IDENTIFIED SIGN FOR BAY
 - 86. IDENTIFIED SIGN FOR BAY
 - 87. IDENTIFIED SIGN FOR BAY
 - 88. IDENTIFIED SIGN FOR BAY
 - 89. IDENTIFIED SIGN FOR BAY
 - 90. IDENTIFIED SIGN FOR BAY
 - 91. IDENTIFIED SIGN FOR BAY
 - 92. IDENTIFIED SIGN FOR BAY
 - 93. IDENTIFIED SIGN FOR BAY
 - 94. IDENTIFIED SIGN FOR BAY
 - 95. IDENTIFIED SIGN FOR BAY
 - 96. IDENTIFIED SIGN FOR BAY
 - 97. IDENTIFIED SIGN FOR BAY
 - 98. IDENTIFIED SIGN FOR BAY
 - 99. IDENTIFIED SIGN FOR BAY
 - 100. IDENTIFIED SIGN FOR BAY

BEARING IS GROUND LINE ZONE 17 NORTH (ORIGINAL) DERIVED FROM NAD 83 DATUM. MONUMENT NUMBER 42421 AND 3335 EAST 793820.00M COORDINATE. THE CORNER POINTS ARE LOCATED AT THE POINT OF INTERSECTION OF THE BOUNDARY LINES AS SHOWN ON THIS PLAN.

DISTANCES ARE GROUND AND CAN BE CONVERTED TO GROUND BY MULTIPLYING BY THE CORNER SCALE FACTOR OF 0.99967.

SURVEYOR'S CERTIFICATE

I CERTIFY THAT THIS SURVEY AND PLAN ARE CORRECT AND IN ACCORDANCE WITH THE REGULATIONS MADE UNDER THEM.

2. THE SURVEY WAS COMPLETED ON THE 12th DAY OF August 2016.

DATE: June 8, 2016

Radly Pentek
SURVEYOR

OWNER'S CERTIFICATE

THIS IS TO CERTIFY THAT:

1. LOTS 1 TO 400 BOTH INCLUDING BLOCKS 410 TO 421 BOTH INCLUDING STREET WIDTHS, NAMELY CALLANDER ROAD, CLOCKWORK DRIVE, DONLAMONT CIRCLE, EDENSOR HILL DRIVE, FACET STREET, FEDER STREET, MINNA ROAD, MINING TRAIL, MINNA TRAIL, REDFERN STREET AND TROVER STREET, HAVE BEEN Laid OUT IN ACCORDANCE WITH OUR INSTRUCTIONS.

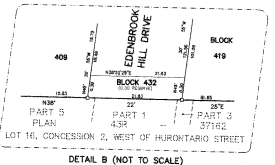
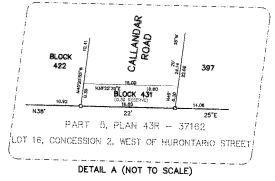
2. THE STREETS ARE HEREBY DEDICATED AS PUBLIC HIGHWAYS TO THE CORPORATION OF THE CITY OF BRAMPTON.

3. THE STREET WIDTHS NAMELY BLOCK 408 IS HEREBY DEDICATED AS A PUBLIC HIGHWAY TO THE REGIONAL MUNICIPALITY OF PEEL.

MATTAMY (MOUNT PLEASANT) LIMITED

DATED THE 12th DAY OF August 2016.

Mattamy
AUTHORIZED SIGNING OFFICER



MUNICIPAL APPROVAL

APPROVED UNDER SECTION 51 OF THE PLANNING ACT, R.S.O. 1990, CH. 193.

DATE: 13th DAY OF August 2016

Mark Radly
PLANNING AND INFRASTRUCTURE SERVICES OFFICER
PLANNING AND INFRASTRUCTURE SERVICES DEPARTMENT
CORPORATION OF THE CITY OF BRAMPTON

rpe RADY-PENTEK & EDWARD SURVEYING LTD.

217-10988
217-10989
217-10990
217-10991
217-10992
217-10993
217-10994
217-10995
217-10996
217-10997
217-10998
217-10999
217-11000
217-11001
217-11002
217-11003
217-11004
217-11005
217-11006
217-11007
217-11008
217-11009
217-11010
217-11011
217-11012
217-11013
217-11014
217-11015
217-11016
217-11017
217-11018
217-11019
217-11020
217-11021
217-11022
217-11023
217-11024
217-11025
217-11026
217-11027
217-11028
217-11029
217-11030
217-11031
217-11032
217-11033
217-11034
217-11035
217-11036
217-11037
217-11038
217-11039
217-11040
217-11041
217-11042
217-11043
217-11044
217-11045
217-11046
217-11047
217-11048
217-11049
217-11050

217-11051
217-11052
217-11053
217-11054
217-11055
217-11056
217-11057
217-11058
217-11059
217-11060
217-11061
217-11062
217-11063
217-11064
217-11065
217-11066
217-11067
217-11068
217-11069
217-11070
217-11071
217-11072
217-11073
217-11074
217-11075
217-11076
217-11077
217-11078
217-11079
217-11080
217-11081
217-11082
217-11083
217-11084
217-11085
217-11086
217-11087
217-11088
217-11089
217-11090
217-11091
217-11092
217-11093
217-11094
217-11095
217-11096
217-11097
217-11098
217-11099
217-11100

217-11101
217-11102
217-11103
217-11104
217-11105
217-11106
217-11107
217-11108
217-11109
217-11110
217-11111
217-11112
217-11113
217-11114
217-11115
217-11116
217-11117
217-11118
217-11119
217-11120
217-11121
217-11122
217-11123
217-11124
217-11125
217-11126
217-11127
217-11128
217-11129
217-11130
217-11131
217-11132
217-11133
217-11134
217-11135
217-11136
217-11137
217-11138
217-11139
217-11140
217-11141
217-11142
217-11143
217-11144
217-11145
217-11146
217-11147
217-11148
217-11149
217-11150

217-11151
217-11152
217-11153
217-11154
217-11155
217-11156
217-11157
217-11158
217-11159
217-11160
217-11161
217-11162
217-11163
217-11164
217-11165
217-11166
217-11167
217-11168
217-11169
217-11170
217-11171
217-11172
217-11173
217-11174
217-11175
217-11176
217-11177
217-11178
217-11179
217-11180
217-11181
217-11182
217-11183
217-11184
217-11185
217-11186
217-11187
217-11188
217-11189
217-11190
217-11191
217-11192
217-11193
217-11194
217-11195
217-11196
217-11197
217-11198
217-11199
217-11200

CURVE DATA	CURVE		BEARING
	ANGLE (DEGREES)	RADIUS (METERS)	
1	90.00	1.00	N89°15'00"W
2	90.00	1.00	N00°00'00"W
3	90.00	1.00	S89°15'00"W
4	90.00	1.00	S00°00'00"W
5	90.00	1.00	N89°15'00"W
6	90.00	1.00	N00°00'00"W
7	90.00	1.00	S89°15'00"W
8	90.00	1.00	S00°00'00"W
9	90.00	1.00	N89°15'00"W
10	90.00	1.00	N00°00'00"W
11	90.00	1.00	S89°15'00"W
12	90.00	1.00	S00°00'00"W
13	90.00	1.00	N89°15'00"W
14	90.00	1.00	N00°00'00"W
15	90.00	1.00	S89°15'00"W
16	90.00	1.00	S00°00'00"W
17	90.00	1.00	N89°15'00"W
18	90.00	1.00	N00°00'00"W
19	90.00	1.00	S89°15'00"W
20	90.00	1.00	S00°00'00"W
21	90.00	1.00	N89°15'00"W
22	90.00	1.00	N00°00'00"W
23	90.00	1.00	S89°15'00"W
24	90.00	1.00	S00°00'00"W
25	90.00	1.00	N89°15'00"W
26	90.00	1.00	N00°00'00"W
27	90.00	1.00	S89°15'00"W
28	90.00	1.00	S00°00'00"W
29	90.00	1.00	N89°15'00"W
30	90.00	1.00	N00°00'00"W
31	90.00	1.00	S89°15'00"W
32	90.00	1.00	S00°00'00"W
33	90.00	1.00	N89°15'00"W
34	90.00	1.00	N00°00'00"W
35	90.00	1.00	S89°15'00"W
36	90.00	1.00	S00°00'00"W
37	90.00	1.00	N89°15'00"W
38	90.00	1.00	N00°00'00"W
39	90.00	1.00	S89°15'00"W
40	90.00	1.00	S00°00'00"W