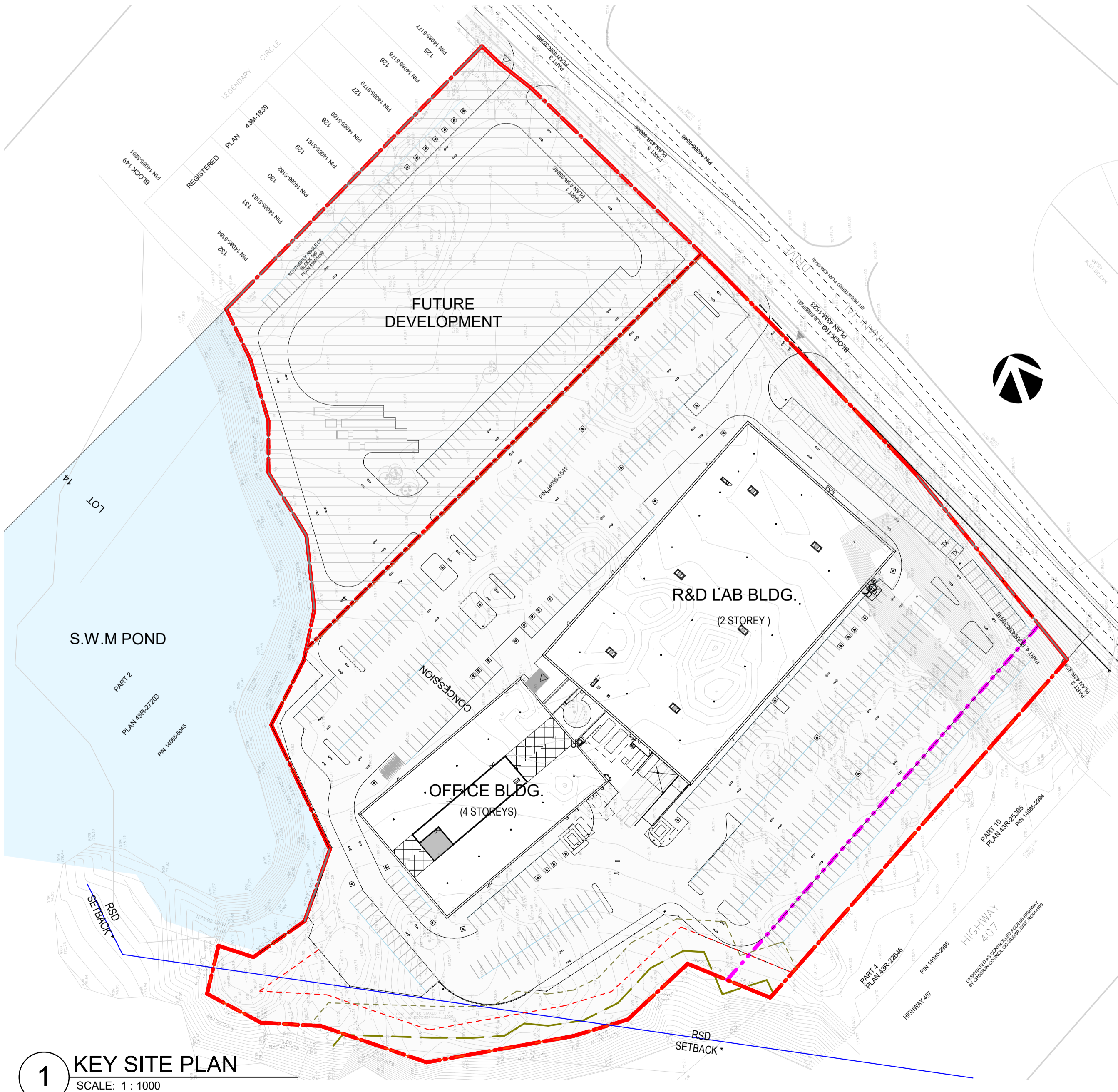


ARCHITECTURAL DRAWING LIST	
Sheet Number	Sheet Name
A00	COVER SHEET
A01	SITE LOCATION
A02	SITE PLAN
A03	CODE MATRIX
A10	OFFICE BUILDING - ELEVATIONS
A14	LAB BUILDING - ELEVATIONS
A21	WOOD SCREEN DETAIL
A22	3D PERSPECTIVE VIEWS
A23	3D PERSPECTIVE VIEWS
A25	ROOF TOP EQUIPMENT SCREENING



**1 KEY SITE PLAN**  
SCALE: 1 : 1000

Note: Plans will be signed as approved upon the receipt of clearances from City Legal and Finance.  
Allan A. Parsons

**CITY OF BRAMPTON**  
**SITE PLAN**  
**APPROVED**  
subject to an agreement  
On This 12 Day of October 2021  
*Allan Parsons*  
**Allan Parsons**  
Director, Development Services

Site Plan Approval does not include lands labeled "Future Development"

**CITY OF BRAMPTON**  
**Engineering Services**  
Approved by Transportation  
Development Planning  
By *Todd Payne*  
Date 2021/10/04

**City of Brampton**  
**Building Division**  
**Zoning Reviewed**  
2021/10/04  
TODD PAYNE



Project  
**PROJECT GLEN - NEW  
OFFICE AND R&D LAB  
BUILDING AT BRAMPTON**

Prepared For  
**Kaneff Properties Limited**



400 University Avenue Suite 2200  
Toronto, ON, M5G 1S5  
t +1 (416) 203 9993

All reproduction & intellectual property rights reserved © 2020  
In Association with  
**Cavalleri & Associates**  
Project Managers  
2145 Dunwin Drive Suite 14  
Mississauga, ON L5L 4L9  
**Read Jones Christoffersen Ltd.**  
Structural Engineers  
100 University Ave, North Tower, Suite 400,  
Toronto, ON, M5J 1V6  
**The HIDI Group**  
Mechanical & Electrical Engineers  
155 Gordon Baker Road, Suite,  
200 Toronto, ON, M2H 3R5  
**Crozier Consulting Engineers**  
Civil Engineers  
2800 High Point Drive, Suite  
100 Milton, ON, L9B 5P4  
**Baker Turner Inc.**  
Landscape  
6501 Mississauga Rd,  
Brampton, ON L6Y 5G8  
Key Plan



No.	Description	Date
1	FOR SPA	2021.02.26
2	FOR SPA SUBMISSION #02	2021.07.09
3	FOR SPA SUBMISSION #03	2021.09.03

Project No: SPA-2021-0042

Sheet Title  
**SITE LOCATION**

Original drawing is A1. Do not scale contents of this drawing.  
Sheet Number

**A01**



# FINANCIAL DR. OFFICE DEVELOPMENT

NEW 1-STOREY SHELL OFFICE BUILDING  
FINANCIAL DRIVE, BRAMPTON, ONTARIO

CONCEPT ILLUSTRATION ONLY



Pearce McCluskey Architects  
2203 Durwin Drive • Mississauga, Ontario • L5L 1X2  
www.pmarchitects.ca 1.905.607.2444



This drawing is not to be used for construction unless signed by partner in charge.

Contractors must verify all dimensions and be responsible for same, report any discrepancies to the architect before commencing the work.

Prints are not to be scaled.

All drawings and related documents are the sole copyright property of the architect and must be returned upon request, any reproduction of drawings and related documents in part or in whole is forbidden without the architect's written permission.

detail number  
sheet number      key to details



OWNER:  
KANEFF GROUP OF COMPANIES  
3501 Mississauga Road  
Brampton | Ontario | L6Y 5G8

APPLICANT:



CONCEPT ILLUSTRATION ONLY

Reissued for SPA      Dec 23, 2022  
Issued for SPA      Oct 28, 2022

**New 1-Storey  
Shell Office Building**

7600 Financial Drive  
Brampton, Ontario

**COVER  
SHEET**

Site Plan Application File No.  
City of Brampton - SPA-2022-0199  
Project Number:

21019

Drawn By: km  
Checked By: km  
Date: October 2022  
Scale: nts  
Sheet Number:

**A0.0**