



Centre for Innovation

Expression of Interest and Design Update

Committee of Council
March 29, 2023

 **BRAMPTON**

BACKGROUND CONTEXT

Centre for Innovation

Council endorses \$100 M for Centre for Innovation to support TMU-Sheridan university campus in downtown Brampton.

Continue with project, increase height, and merge with Transit Hub.

Guelph-Humber delegation. Algoma delegation. Rogers Communication's Minister's Zoning Orders.



2017



2018

Begin procurement for architect.
Propose location and scope.
Province withdraws funding.



2019



2020

Revert to the original location.



2022



2021

Select architect.
Begin procurement for construction manager.



2023

Design development complete.
Project budget \$202 M.



CONSIDERATIONS

Centre for Innovation

An Expression of interest would allow the City to seek innovative ideas and partnership models from prospective proponents on the possibilities of the Centre for Innovation as a catalyst to redevelop the downtown core in the current context.

01

▶ Project Evolution

02

▶ Changing Context

03

▶ Expressed Interest

04

▶ Financial Pressure

EXPRESSION OF INTEREST

Centre for Innovation

- 01.** Draft and launch Request for Expression of Interest and supporting documents.
- 02.** A question and response period during the Expression of Interest for clarification purposes.
- 03.** Evaluation process to include proponent presentations and clarification opportunities.
- 04.** Staff report back to Council with top proposals and evaluation outcome for decision-making.



PROPOSED TIMELINE

Centre for Innovation

	J	F	M	A	M	J	J	A	S	O
Draft Documents				■						
Launch Expression of Interest					■					
Questions and Responses					●					
Evaluation						■	■			
Report to Council								■	■	

Center for Innovation



**diamond
schmitt**

Impactful

Front Entrance
George St. & Nelson St.



Connected

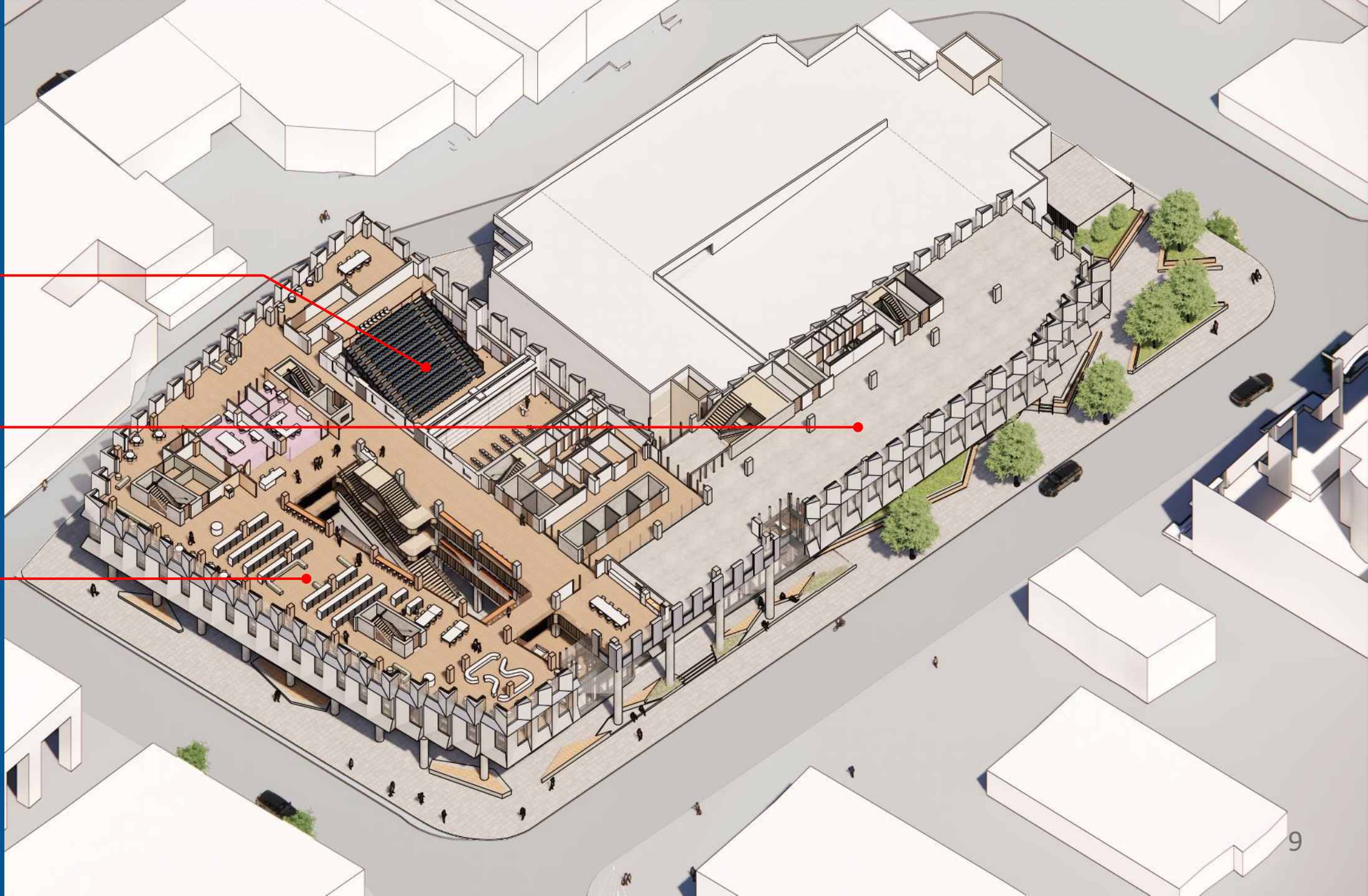


Diplock Lane

Event
Space

Future
Academic

Library &
Study Area



Agile



Library Atrium

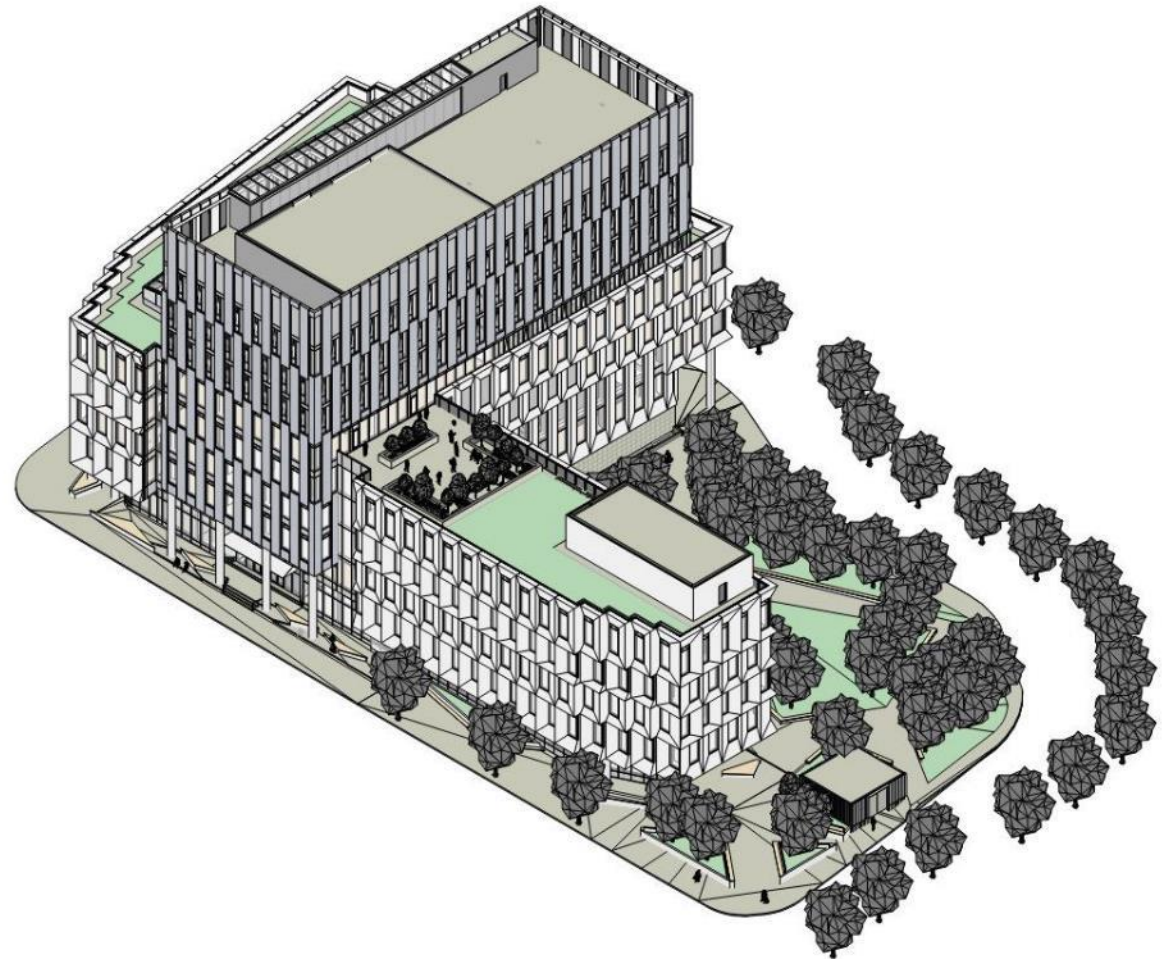
Sustainable

- Resilient
- Low Energy
- Low Carbon
- Healthy



Current Design

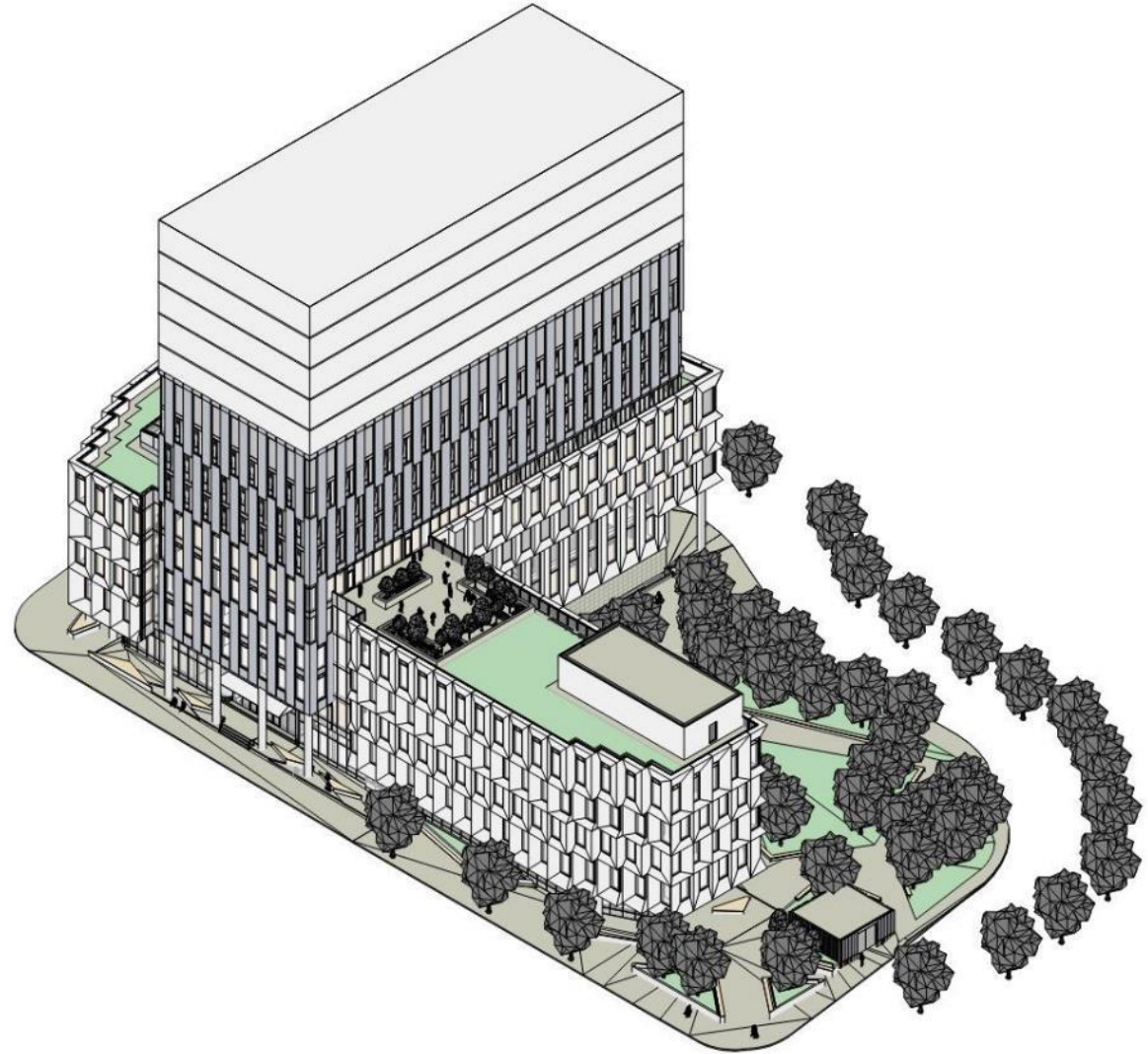
TOTAL: 248,280 sf



Expansion Capacity

- Tower Addition
- 5 Storeys
- 14,230 sf per floor
- **71,150 sf** subtotal

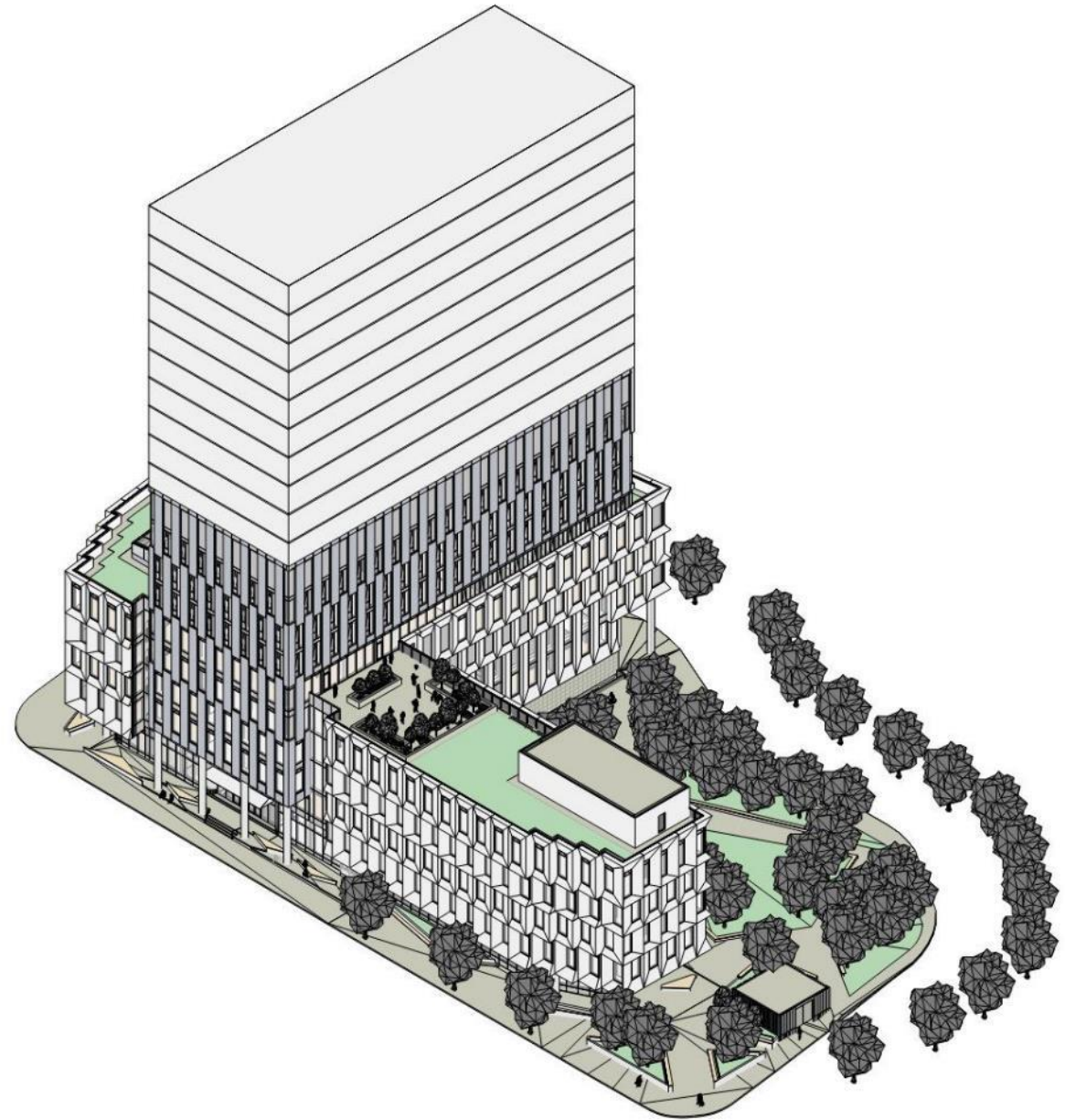
TOTAL: 319,430 sf



Expansion Capacity

- Tower Addition
- 10 Storeys
- 14,230 sf per floor
- **142,300 sf** subtotal

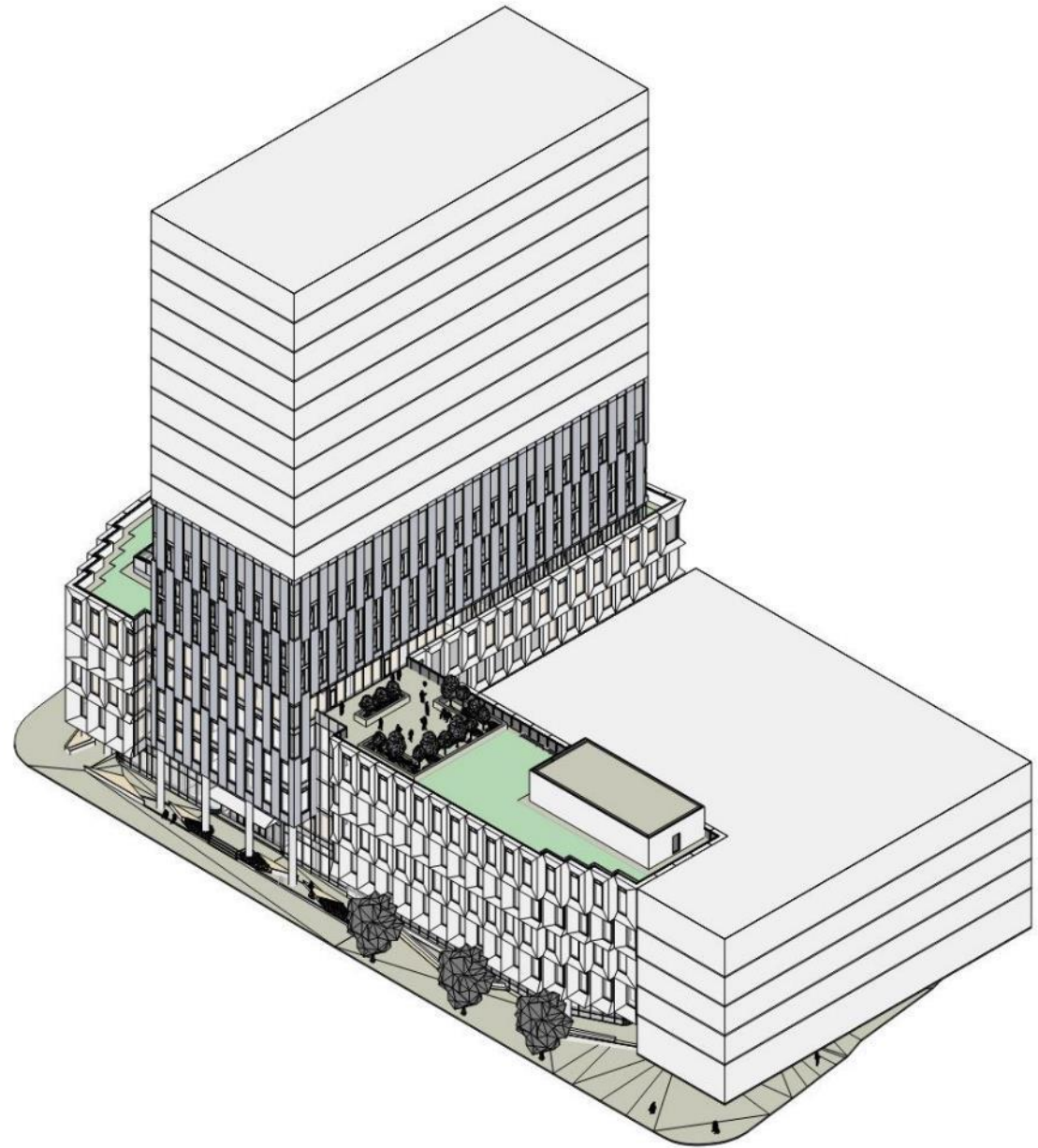
TOTAL: 390,580 sf



Expansion Capacity

- Podium Addition
- 5 Storeys
- 21,185 sf per floor
- **105,925 sf** subtotal

TOTAL: 496,505 sf



Questions and Comments



South Plaza
George St. & Diplock Lane

Thank you!

