

Walnut Foundation Presentation to Brampton City
Council September 20th, 2023

Black Men and Prostate cancer Raising Awareness

Ken Noel and Anthony Henry

THE WALNUT FOUNDATION

Empowering men to take responsibility for their health.

info@thewalnutfoundation.com | thewalnutfoundation.com | Tel: 905.799.2759 Fax: 905.799.8345





The Walnut Foundation

- We are a 100% Volunteered-based Registered non-profit Charity, with a mission to bring awareness to the community through education (monthly meetings/ conferences/ churches, community health centres, etc)
- Provide a safe/ confidential environment for dialogue and support to black men with Prostate Cancer.
- Partnered in research projects targeted to the black community (Princess Margaret Hospital (2) Canadian Cancer Society (1) Movember (1))
- Fund scholarships for black students entering the medical programs at Temerty Faculty of Medicine at the University of Toronto and upcoming TMU Medical school in Brampton
- Our only Funding comes from an Annual Walkathon and from sponsors to our Conferences and Symposiums



Prostate cancer deaths

This table shows global prostate cancer mortality in 2020. Zimbabwe had the highest rate of prostate cancer mortality in 2020, followed by Barbados.

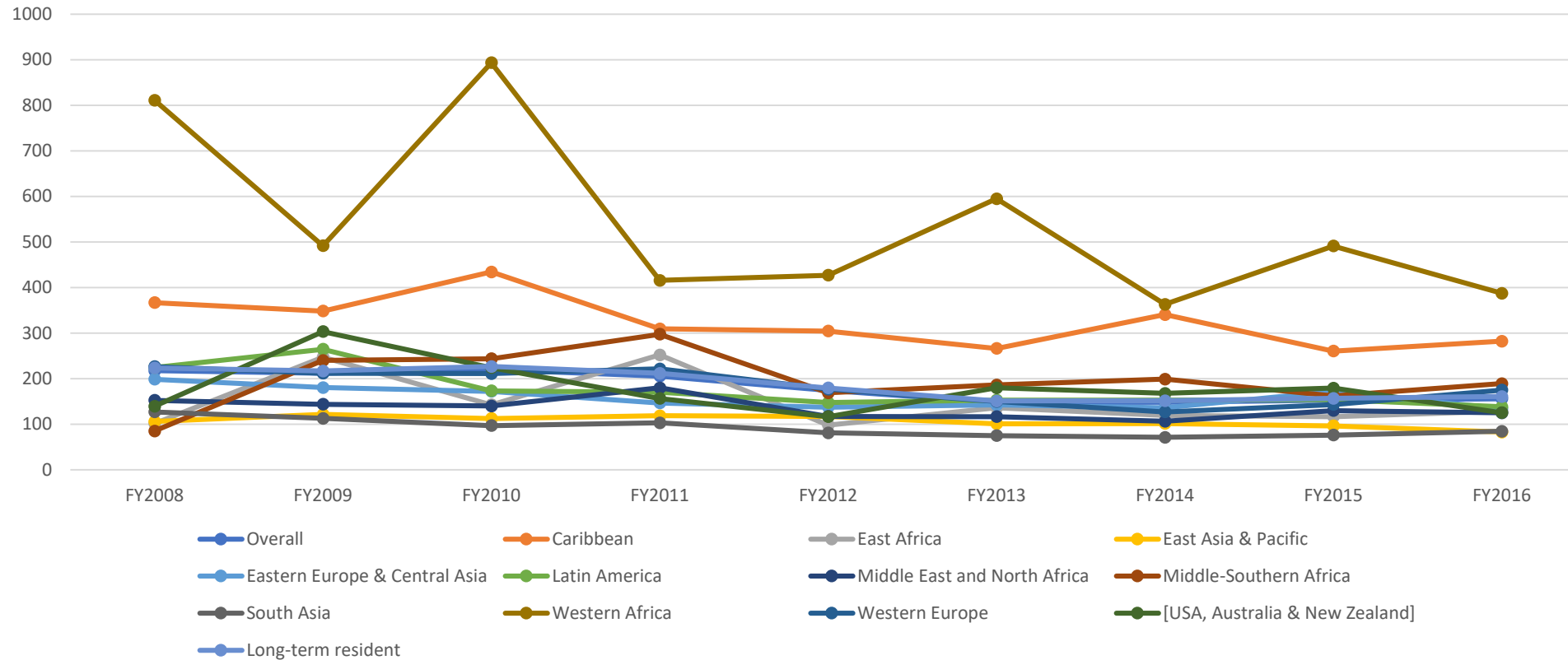
| Rank | Country | Number | ASR/100,000 |
|------|---------------------|----------------|-------------|
| | <i>World</i> | <i>375,304</i> | <i>7.7</i> |
| 1 | Zimbabwe | 868 | 41.7 |
| 2 | Barbados | 137 | 40.3 |
| 3 | Haiti | 1,533 | 40.2 |
| 4 | Zambia | 823 | 40.1 |
| 5 | Jamaica | 844 | 39.4 |
| 6 | Trinidad and Tobago | 403 | 38.9 |
| 7 | Bahamas | 72 | 36.3 |
| 8 | Dominican Republic | 2,228 | 35.0 |
| 9 | Saint Lucia | 54 | 32.6 |
| 10 | Côte d'Ivoire | 1,600 | 29.5 |

Source: The World Health Organization



What does Ontario data tell us

Figure 1. Age-standardized incidence rates per 100,000 for prostate cancer in Ontario for fiscal years (FY) 2008-2016, stratified by region of origin



Research by Dr. Aisha Lofters, Research Scientist, University of Toronto and based on Prostate Cancer among Immigrant men in Ontario. The Walnut Foundation Co-authored this study origin.



Potential Reasons

- Potential reasons for differences in prostate cancer incidence and mortality for Black men
 - ***social and economic disparities,***
 - ***genetics associated with being of West African ancestry,***
 - ***environmental factors,***
 - ***dietary factors,***
 - ***access to quality health care***



Our Work

- The Walnut Foundation is the only organization, that we know of, providing awareness education about prostate cancer in black men.
- We are a 100% volunteer-based with growing demands for our services and partnerships in various Prostate cancer initiatives.
- This model of operations is not sustainable in the future. We need help to transform our operating model to continue to serve the black community.