

**241 QUEEN ST E**  
**OZS-2023-0021**

Review by Sylvia Roberts

## GENERAL NOTES

For landscaping, refer to landscape drawings.

For proposed grading, refer to landscape drawings and approved grading plan.

All perimeter existing information indicated taken from survey.

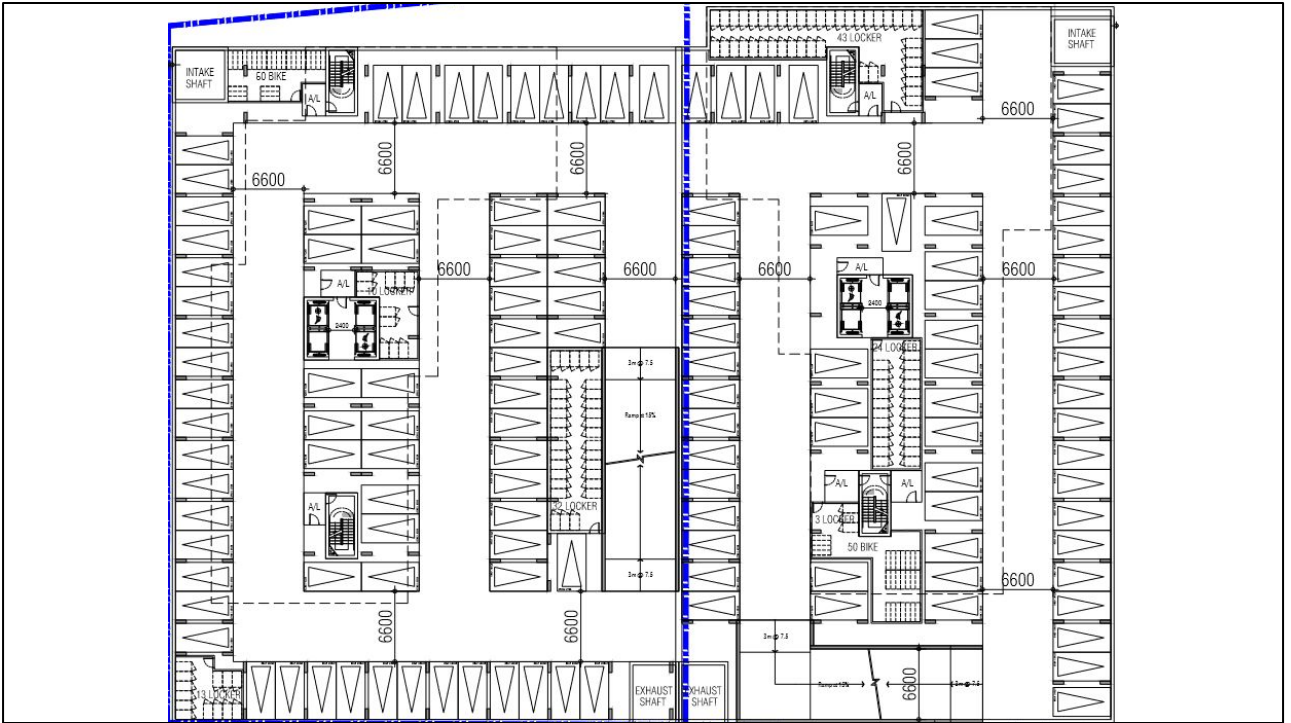
All work to be done in conformance with the 2012 Ontario Building Code (O.B.C., as amended)

All driveway with access onto City owned roadway conform to City of Burlington standards.

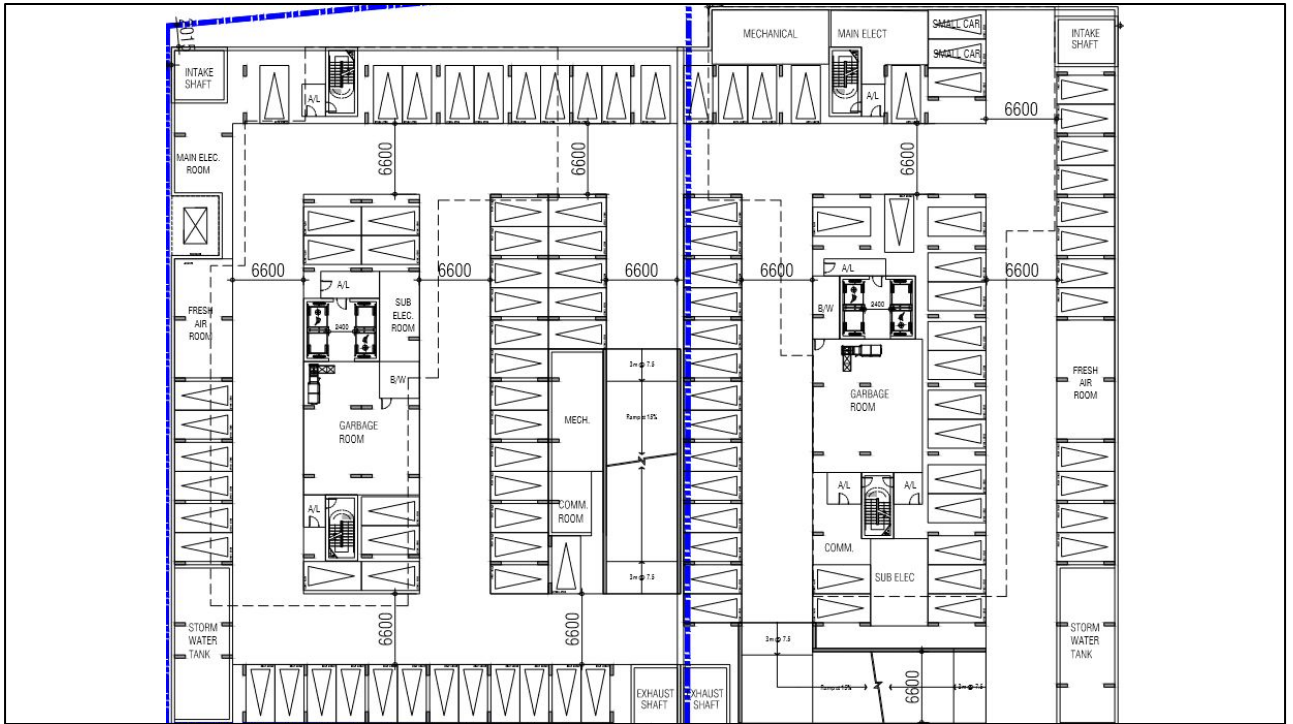
## NOTES

1. Fire access route to existing buildings will be maintained during construction.
2. Accessibility for all pathway to Go Station, Wal-Mart during construction will be maintained.
3. The fire access route will be designed to support a load of not less than 11,363 kg per axle and have a change in gradient of not more than 1 in 12.5 over a minimum distance of 15m.
4. Fire Department access route will be constructed of hard surface material such as asphalt, concrete or lockstone.

Can someone please explain why it references the City of Burlington, a GO Station or Walmart? I don't understand, this is in the City of Brampton.  
From Page 1 of architectural drawings



Here are floors P2-5 for Stage 1, nice, they included parking, just one problem...



Said problem is P1 has no bike parking, this means in some cases people will need to either ride up up to five floors to get to the surface, or use the elevators, which can be slow, especially at peak times. I don't know how to ride a bike, but riding up 2-5 storeys sounds pretty tiring and impractical for regular usage. I strongly recommend the City working to get the bike parking on P1.

While not pictured, Phase 2 has the exact same issue of bike parking on P2-P5 but not P1. Phase 3 the office building lacks bike parking, despite the underground parking garage being bigger than the above ground portion of the building.

## Project issues

- Bike parking in bad locations
- That is a lot of parking
- Office building is an iceberg (larger underground than above ground)

## Suggestion:

- Consult with applicant to use phased surface parking
  - Allows applicant to build less structured parking while meeting temporary demand