

New Brampton Transit Facility Accessibility Committee Review

Brampton, Ontario

November 20, 2023

AGENDA

1. Project Background

2. Site Context

- Site Plan
- Site Circulation
- Main Entrance & Barrier Free Parking

3. Access & Circulation

- Program Layout
- Overall Plans
- Enlarged Plans

4. Washroom Facilities

- Universal Washrooms
- Change Rooms

PROJECT BACKGROUND

About Project: The purpose of the Project is to build a new transit facility that includes vehicle maintenance, vehicle storage and all supporting vehicle wash, fueling, and inspection areas. The building is to also include administration and business support spaces. The City has acquired land in the northeast quadrant of Brampton to construct this new facility which is up to 46,290 sq. m (498,261.41 sq. ft.).

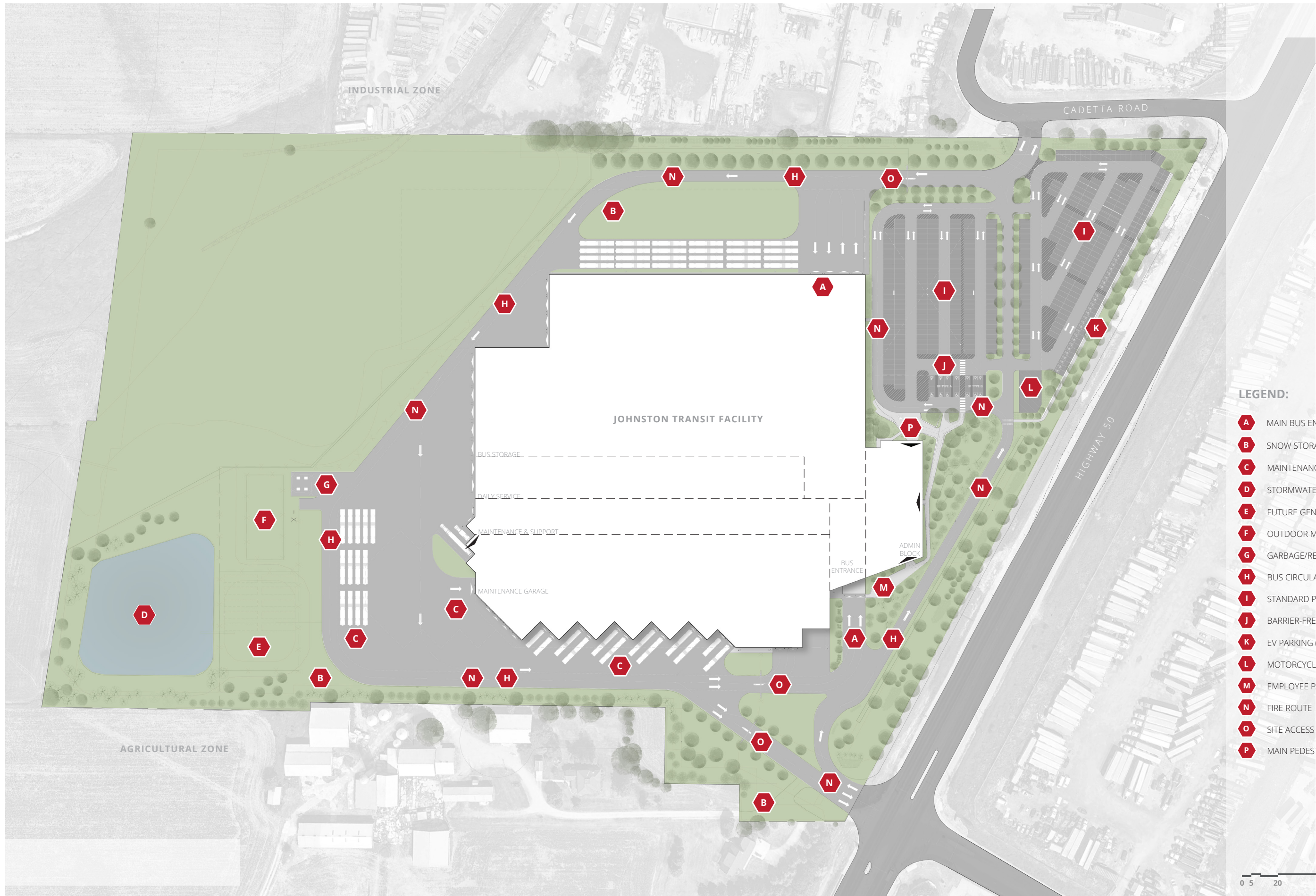
This new facility will include an indoor garage to park 250 buses or standard bus equivalents; a service and maintenance garage; and administrative support spaces.

The Facility will be required to take into consideration the needs for an electric powered fleet.

Site Features: Major building site features include utilities, storm water management, bus circulation, on-site parking, above ground fuel and liquid storage tanks, generator, road intersection and access, facility support spaces, outdoor gathering areas, and site improvements such as landscaping and hardscaping.

Sustainable Goals: The Project will target achievement of LEED v4 / v4.1 BD+C Silver certification

Accessibility: The facility is to be designed in accordance with the City of Brampton Accessibility Technical Standards – Version 2 and Ontario Building Code (OBC)

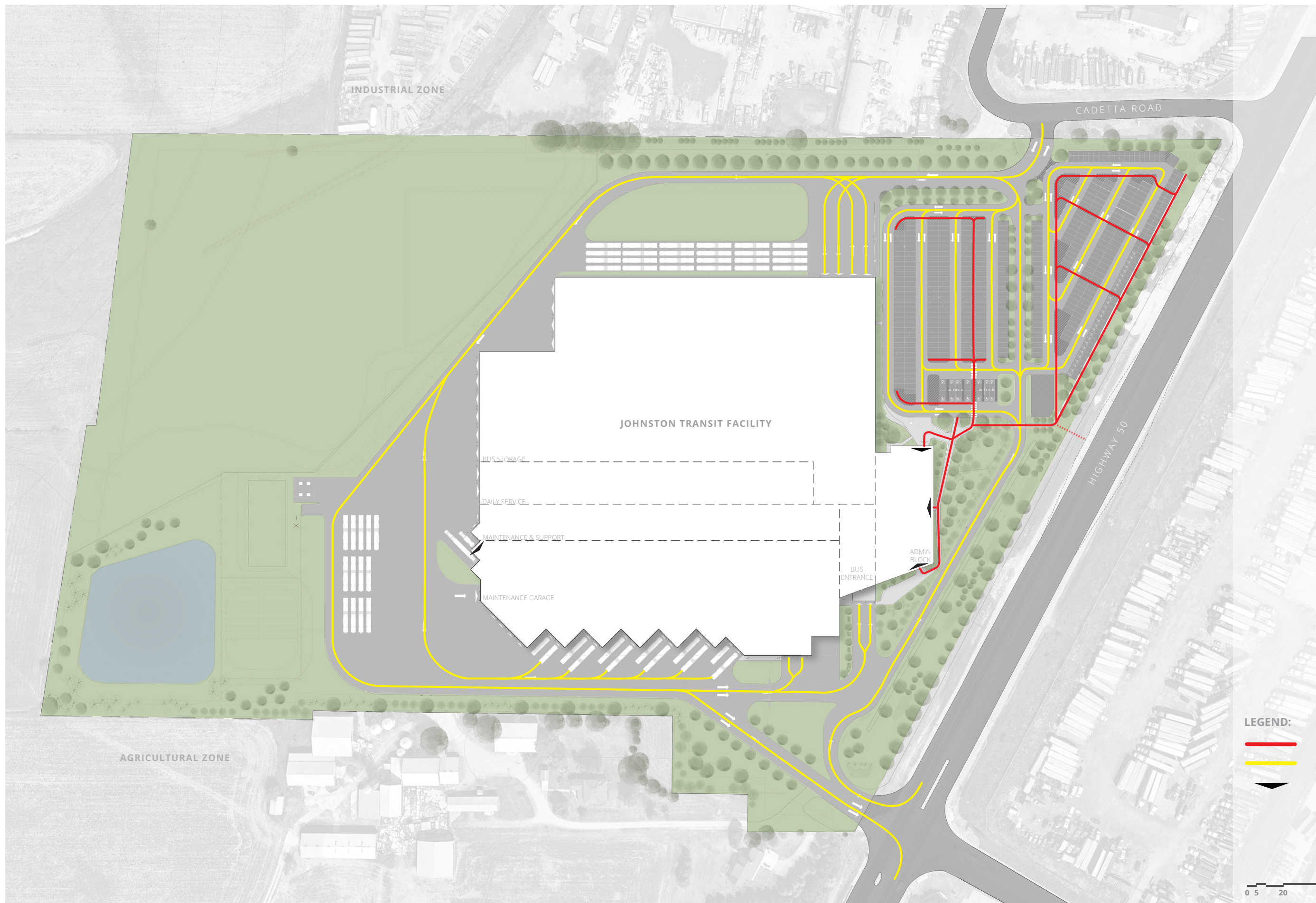


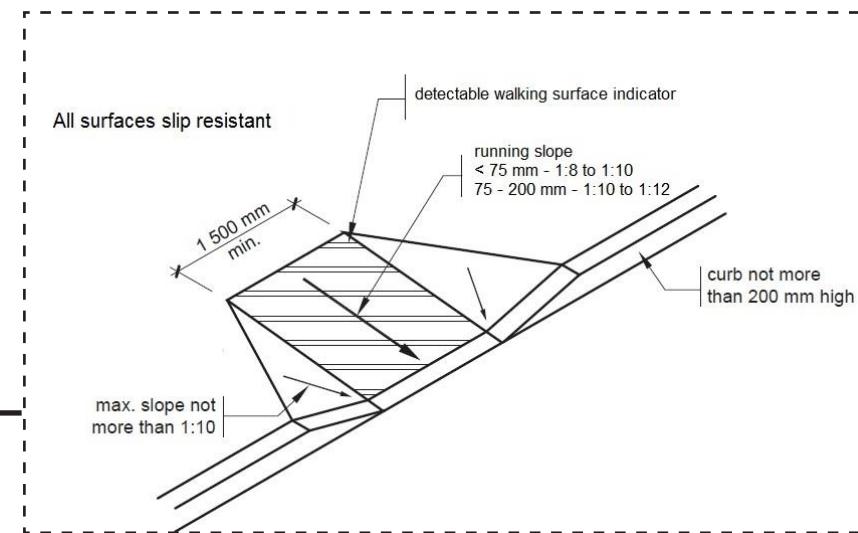
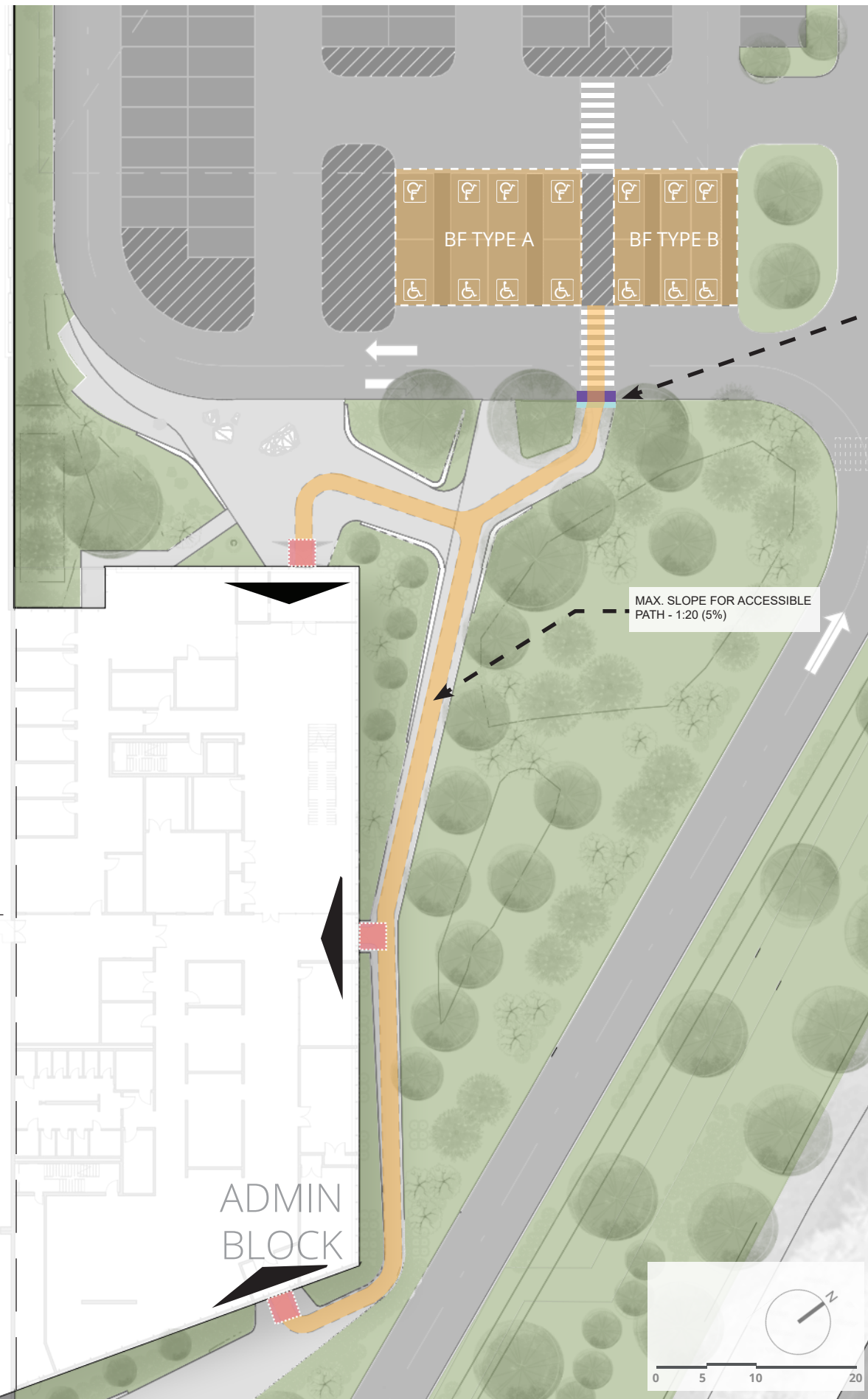
LEGEND:

- A** MAIN BUS ENTRANCE
- B** SNOW STORAGE
- C** MAINTENANCE STAGING
- D** STORMWATER POND
- E** FUTURE GENERATOR COMPOUND
- F** OUTDOOR MATERIAL STORAGE
- G** GARBAGE/RECYCLING ENCLOSURE
- H** BUS CIRCULATION ROADWAY
- I** STANDARD PARKING (359 STALLS)
- J** BARRIER-FREE PARKING (14 STALLS)
- K** EV PARKING (27 STALLS)
- L** MOTORCYCLE PARKING (20 STALLS)
- M** EMPLOYEE PATIO
- N** FIRE ROUTE
- O** SITE ACCESS GATE
- P** MAIN PEDESTRIAN ENTRANCE



0 5 20 50 100

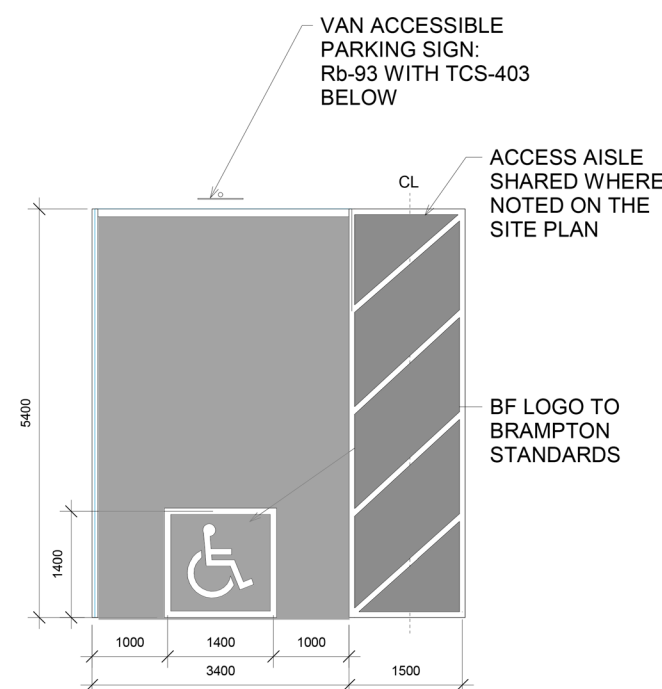




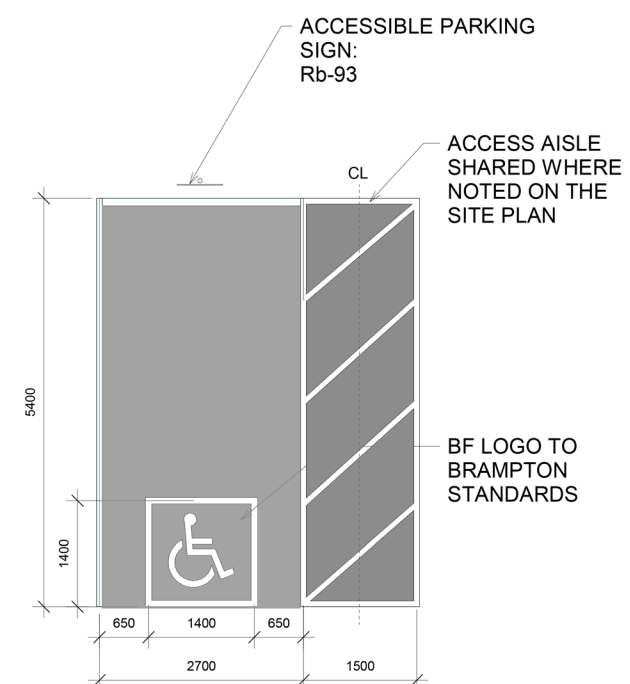
TYPICAL DETAIL: TACTILE WALKING SURFACE INDICATOR AND CURB RAMP

TYPE	OVERALL PARKING SPACES	ACCESSIBLE PARKING SPACES	
		TYPE A - VAN ACCESSIBLE	TYPE B - ACCESSIBLE
REQUIRED (BATS - 400:10)	351 - 400	5	5
PROVIDED (400:14)	400	8	6

PARKING SPACE COUNT



BARRIER-FREE PARKING - TYPE A (VAN ACCESSIBLE)



BARRIER-FREE PARKING - TYPE B

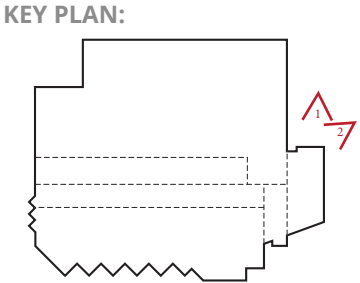
KEY PLAN:

LEGEND:

- 2440 x 2440: LEVEL AREA AT ENTRANCE [BATS]
- 1500 x 1100: EXTERIOR ROUTE [1100 mm MIN. - BATS]
- 1200 x 610: CURB RAMP [BATS]
- 610: TACTILE SURFACE INDICATORS [BATS]



2. VIEW FROM NORTH EAST LOOKING SOUTH WEST



1. VIEW FROM NORTH LOOKING SOUTH



4. ADMIN BUILDING PATIO -VIEW FROM SOUTH EAST LOOKING NORTH WEST



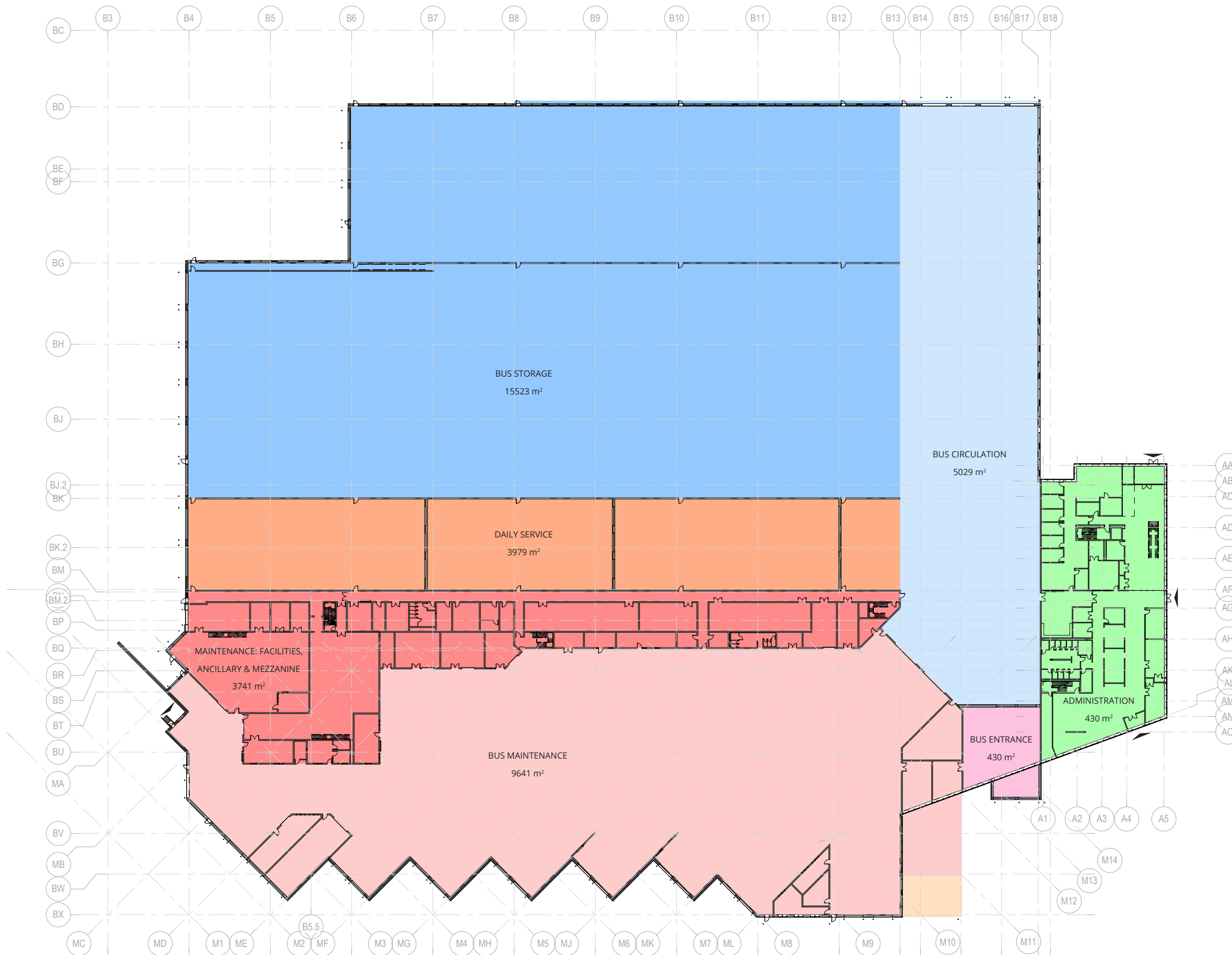
2. ADMIN BUILDING - VIEW FROM EAST LOOKING WEST



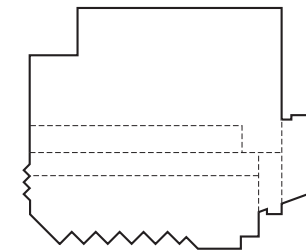
3. MAINTENANCE GARAGE ENTRANCE - VIEW FROM EAST LOOKING WEST



1. BUS STORAGE - VIEW FROM NORTH WEST LOOKING SOUTH EAST

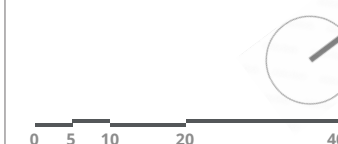


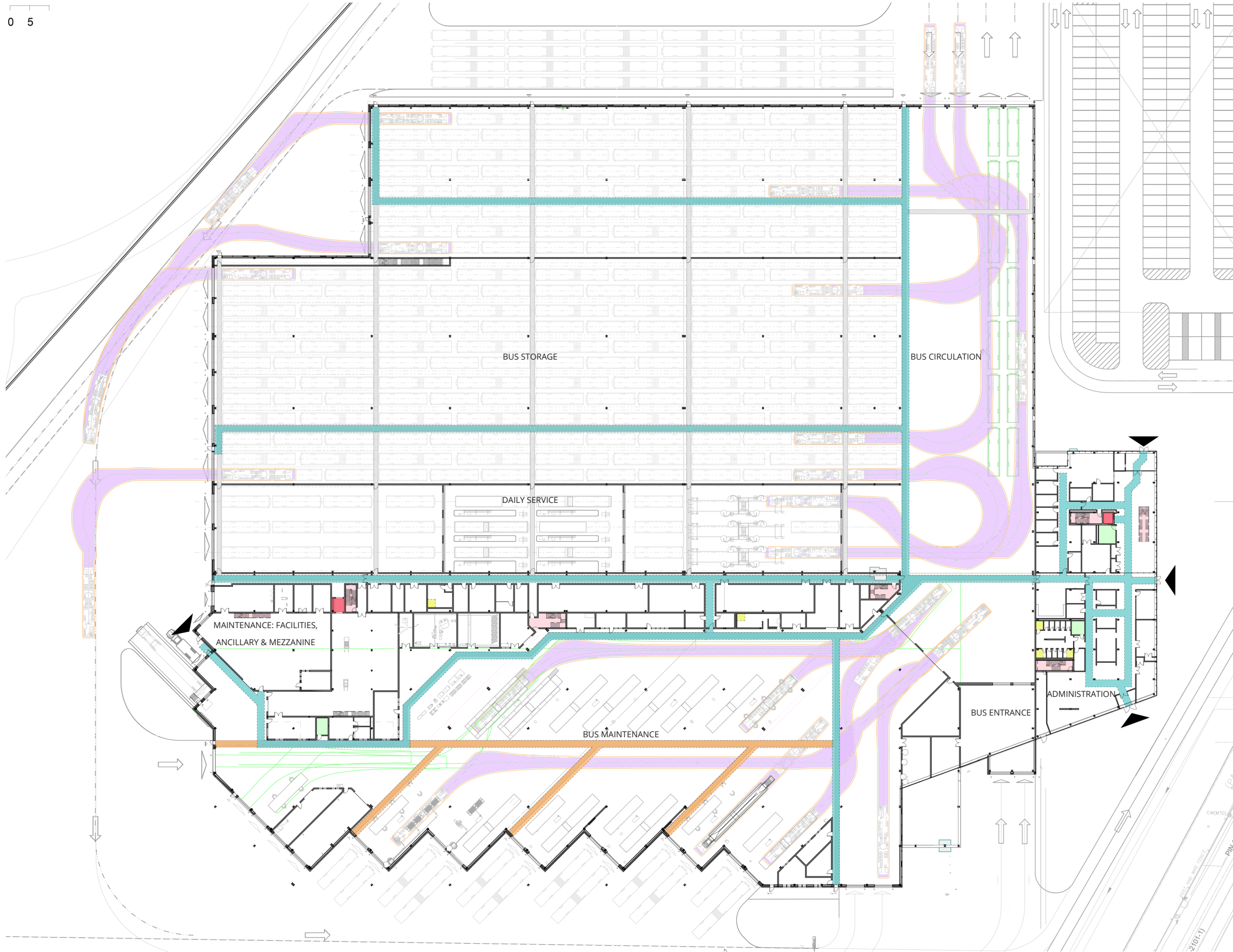
KEY PLAN:



LEGEND:

- ADMINISTRATION
- BUS CIRCULATION
- BUS ENTRANCE
- BUS MAINTENANCE
- BUS STORAGE
- DAILY SERVICE
- MAINTENANCE: FACILITIES, ANCILLARY & MEZZANINE
- TANK FARM





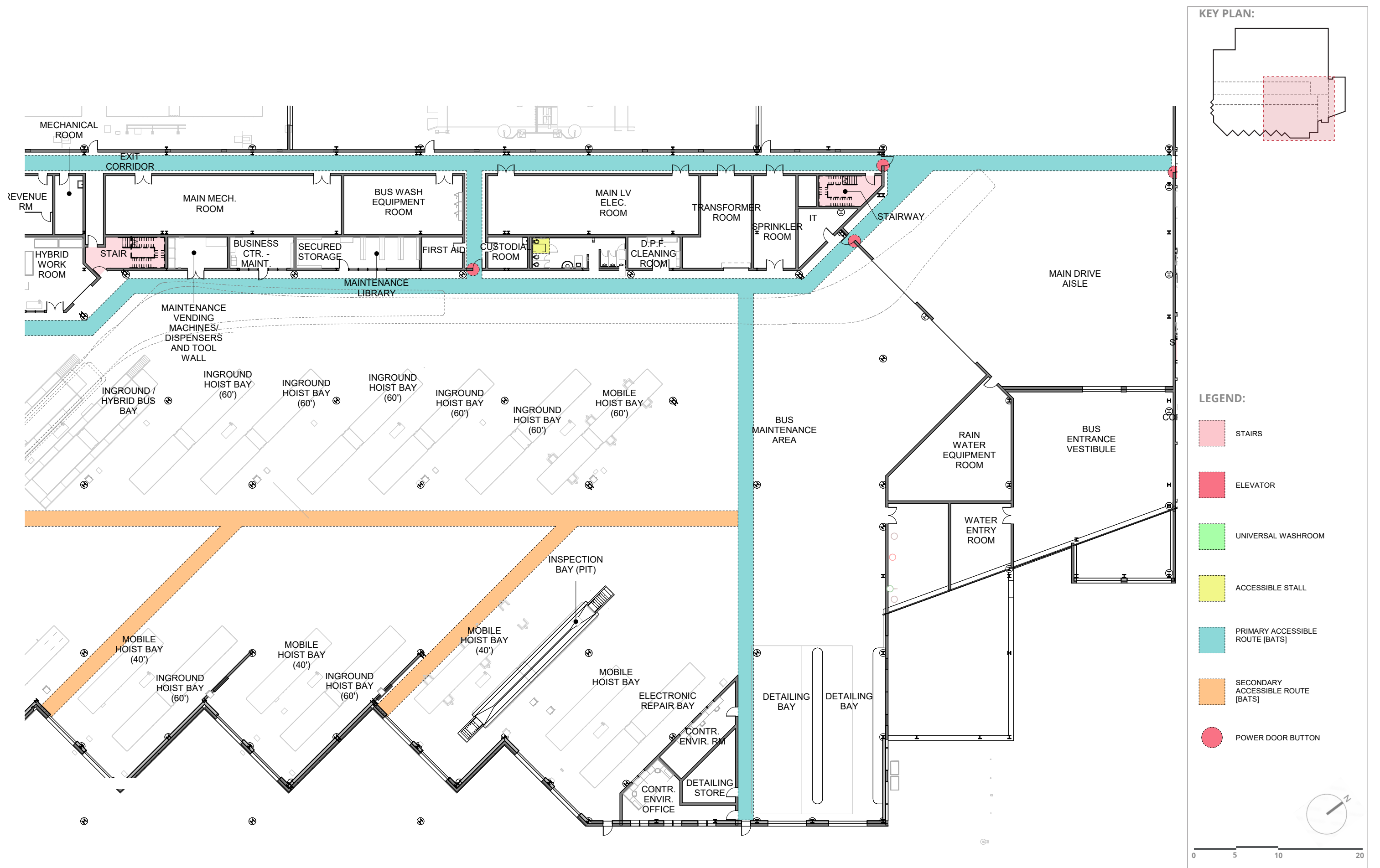
KEY PLAN:

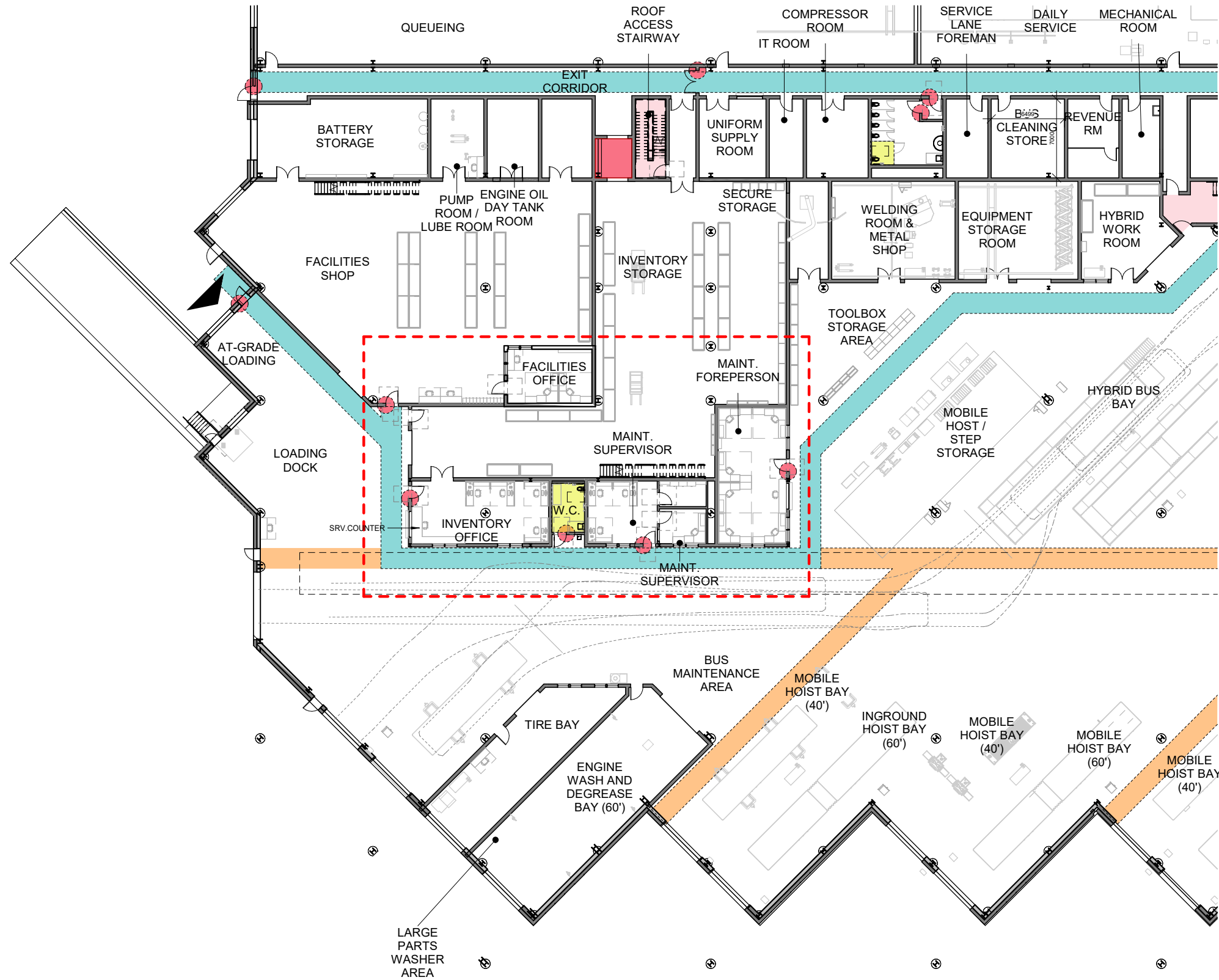
LEGEND:

- BUS CIRCULATION (INTERNAL)
- STAIRS
- ELEVATOR
- UNIVERSAL WASHROOM
- ACCESSIBLE STALL
- PRIMARY ACCESSIBLE ROUTE [BATS]
- SECONDARY ACCESSIBLE ROUTE [BATS]

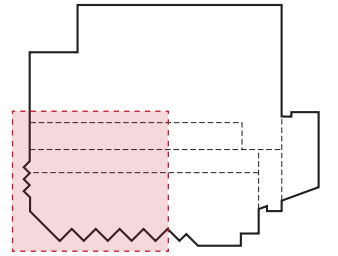
0 5 10 20 40

CM(M70) PIV 2107(1)



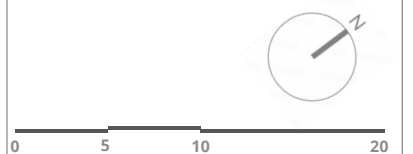


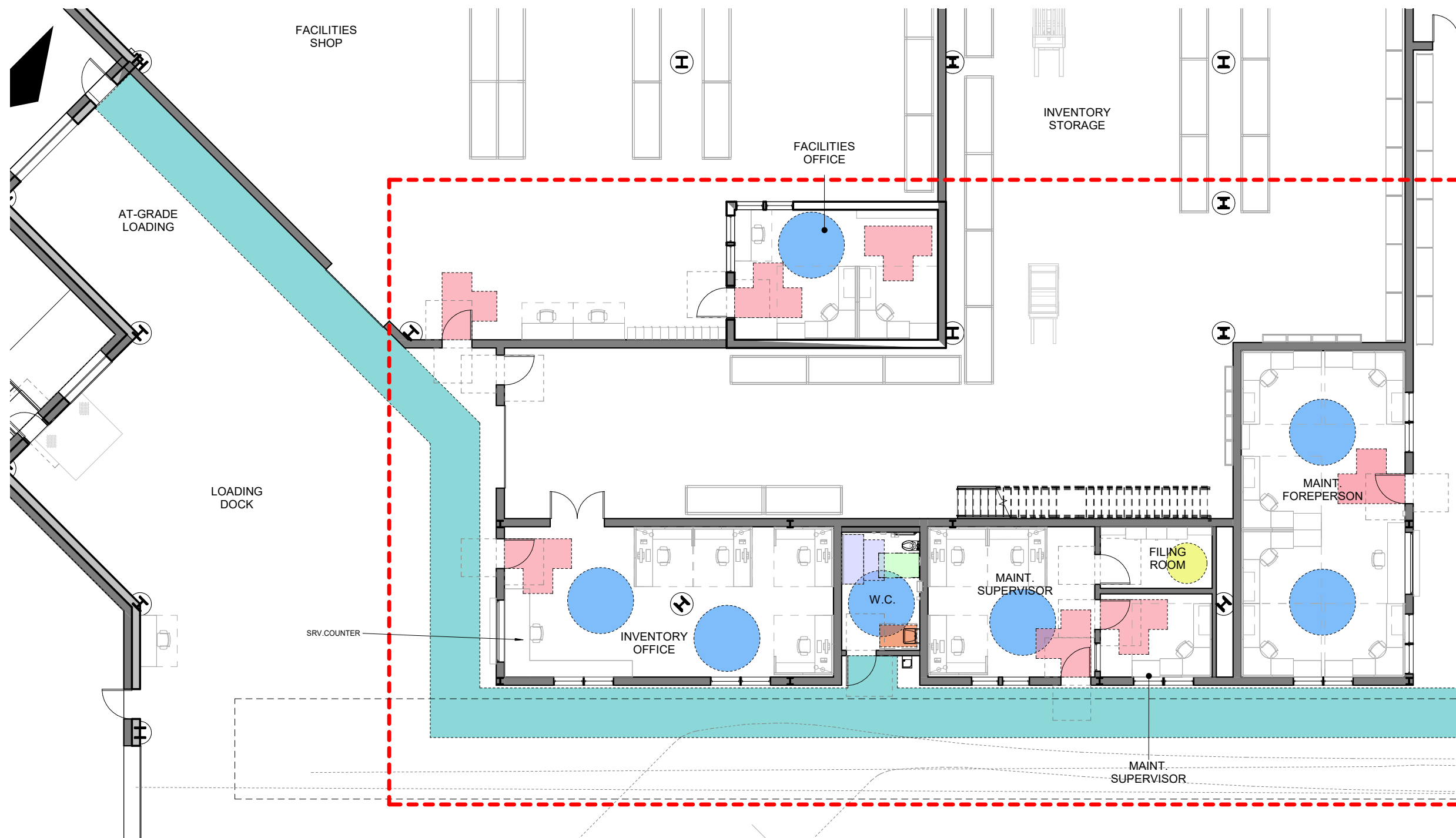
KEY PLAN:



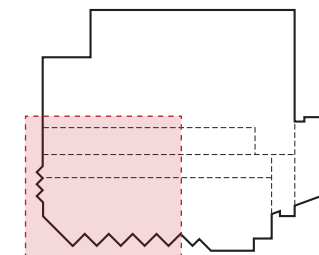
LEGEND:

- STAIRS
- ELEVATOR
- UNIVERSAL WASHROOM
- ACCESSIBLE STALL
- PRIMARY ACCESSIBLE ROUTE [BATS]
- SECONDARY ACCESSIBLE ROUTE [BATS]
- POWER DOOR BUTTON

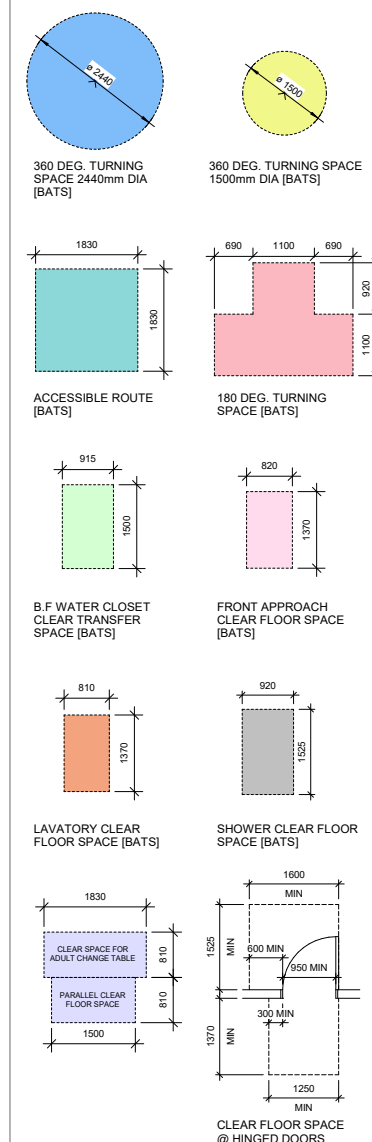


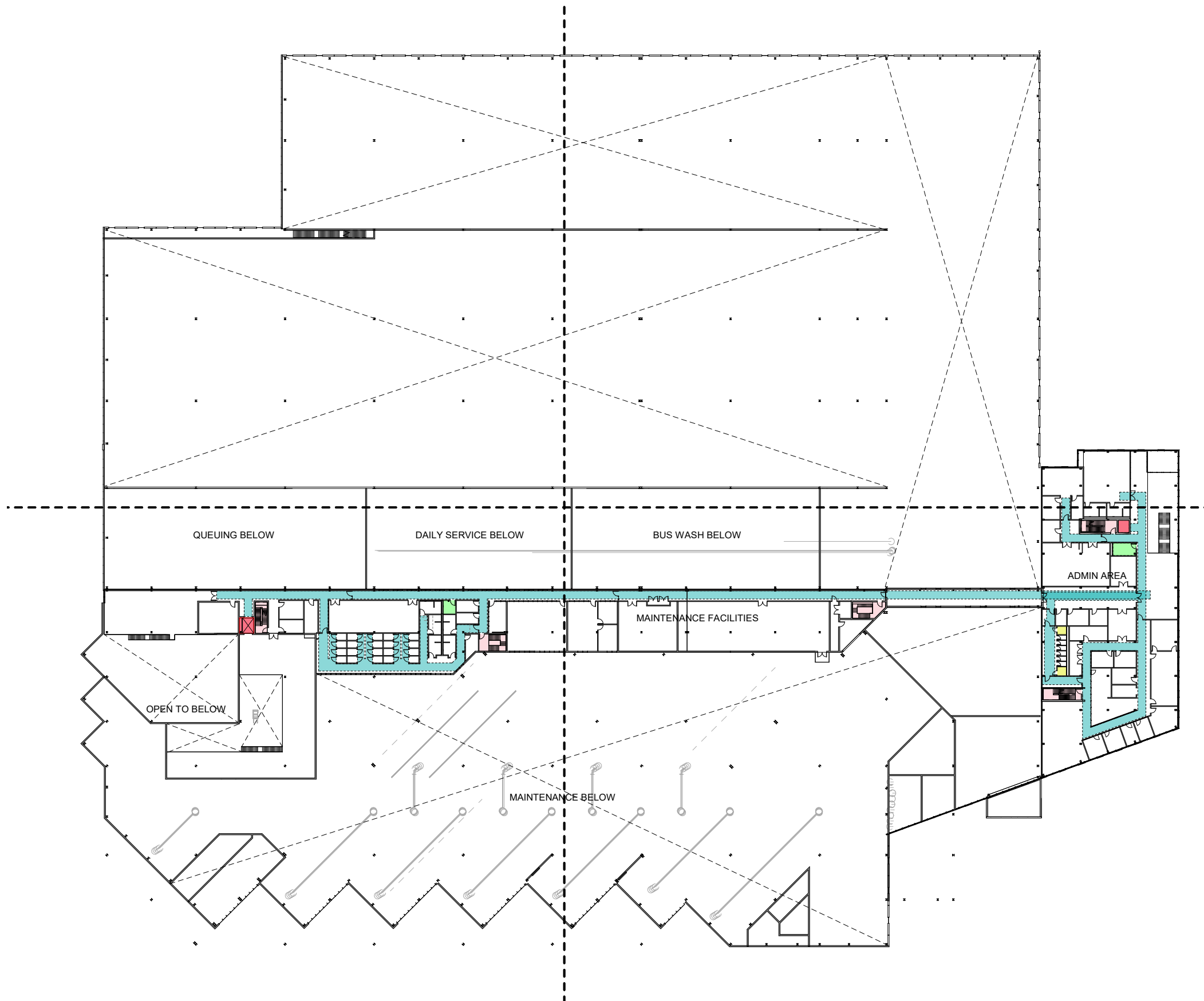


KEY PLAN:

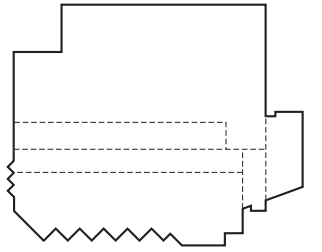


LEGEND:



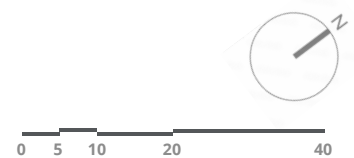


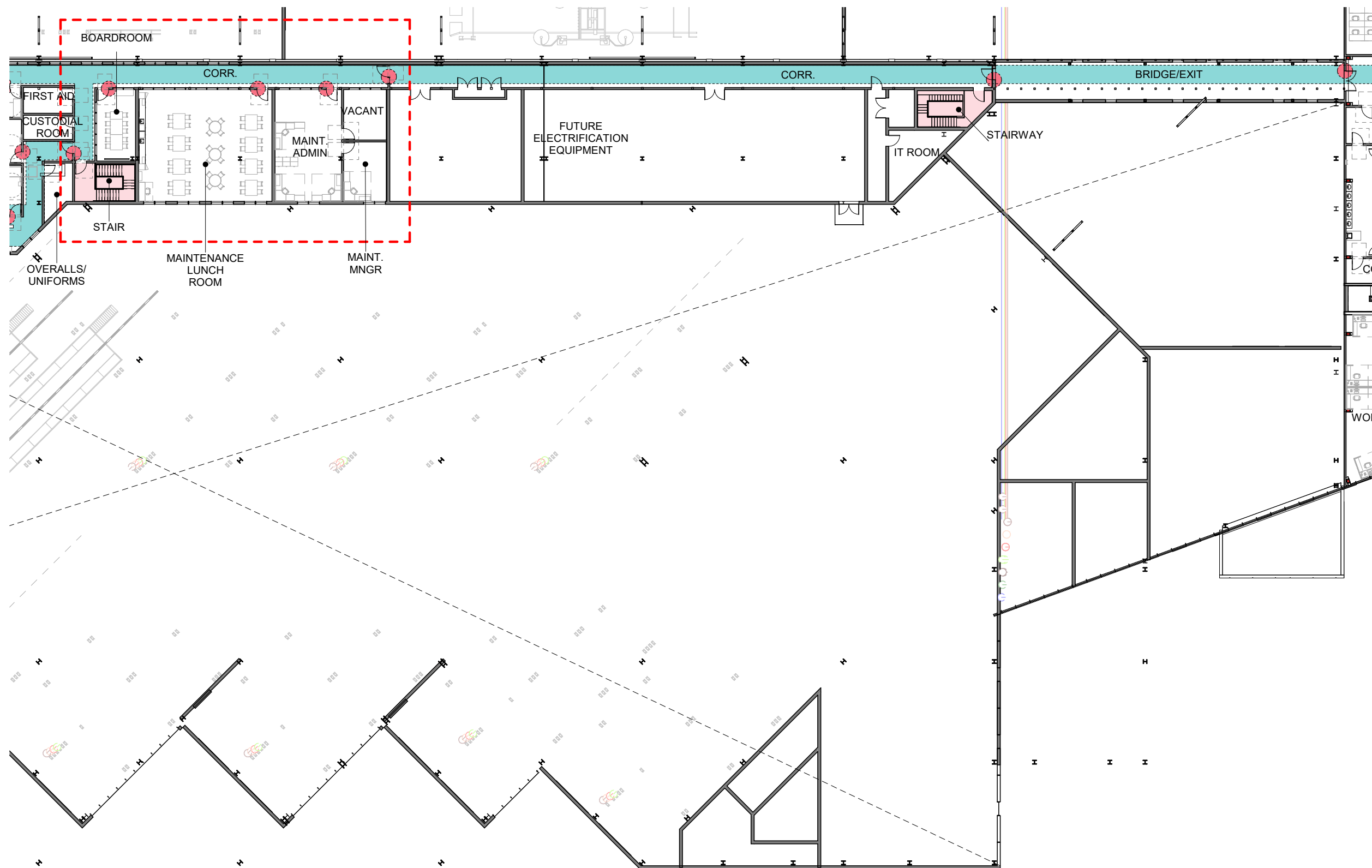
KEY PLAN:



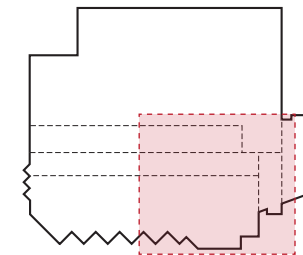
LEGEND:

- STAIRS
- ELEVATOR
- UNIVERSAL WASHROOM
- ACCESSIBLE STALL
- PRIMARY ACCESSIBLE ROUTE [BATS]
- SECONDARY ACCESSIBLE ROUTE [BATS]





KEY PLAN:

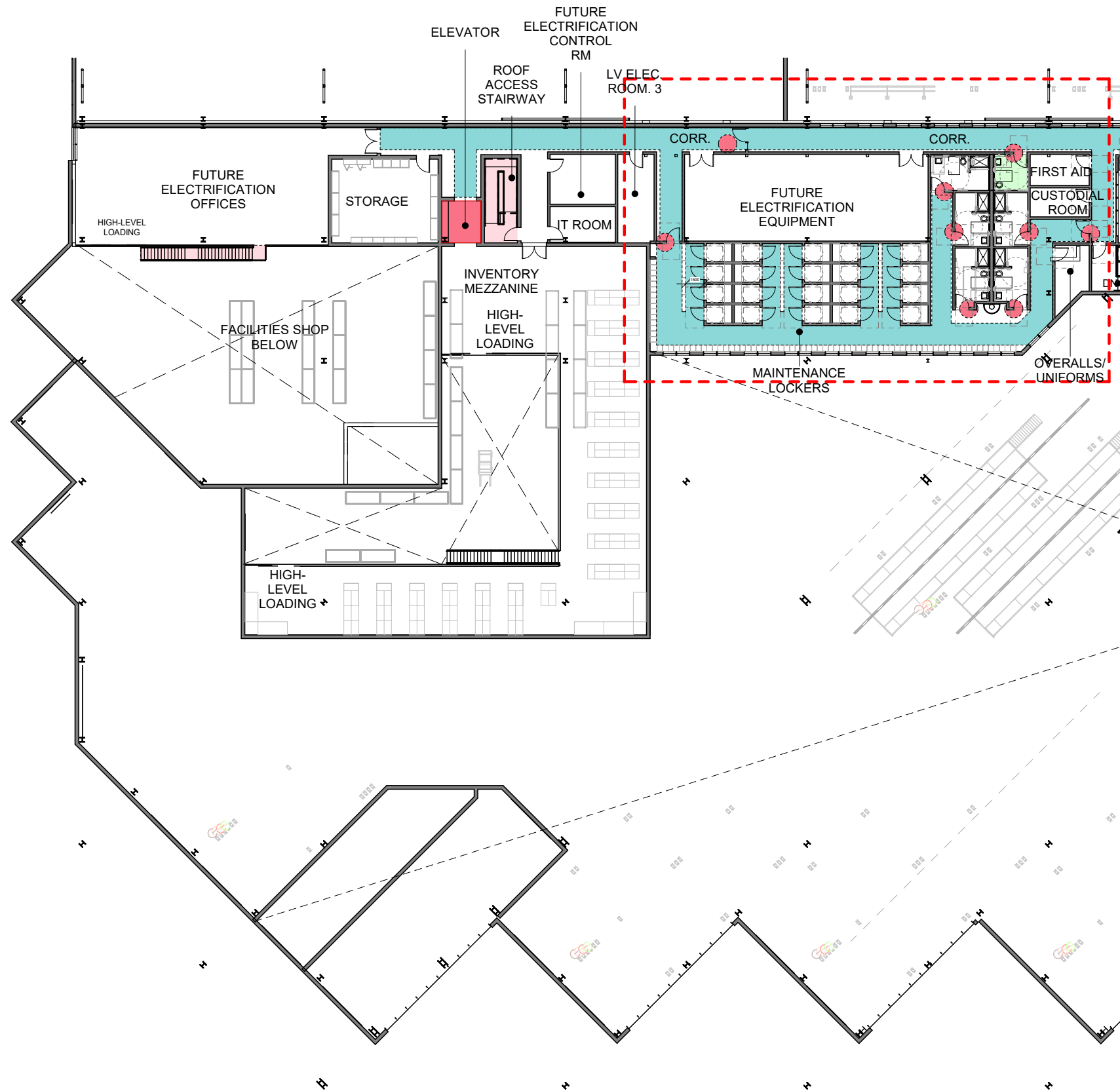


LEGEND:

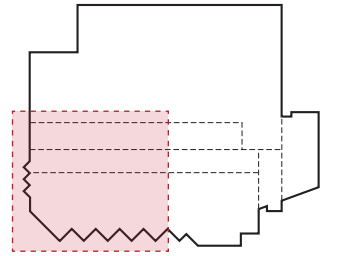
- BUS CIRCULATION (INTERNAL)
- STAIRS
- ELEVATOR
- UNIVERSAL WASHROOM
- ACCESSIBLE STALL
- PRIMARY ACCESSIBLE ROUTE [BATS]



0 5 10 20

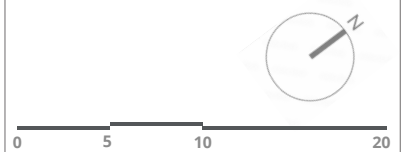


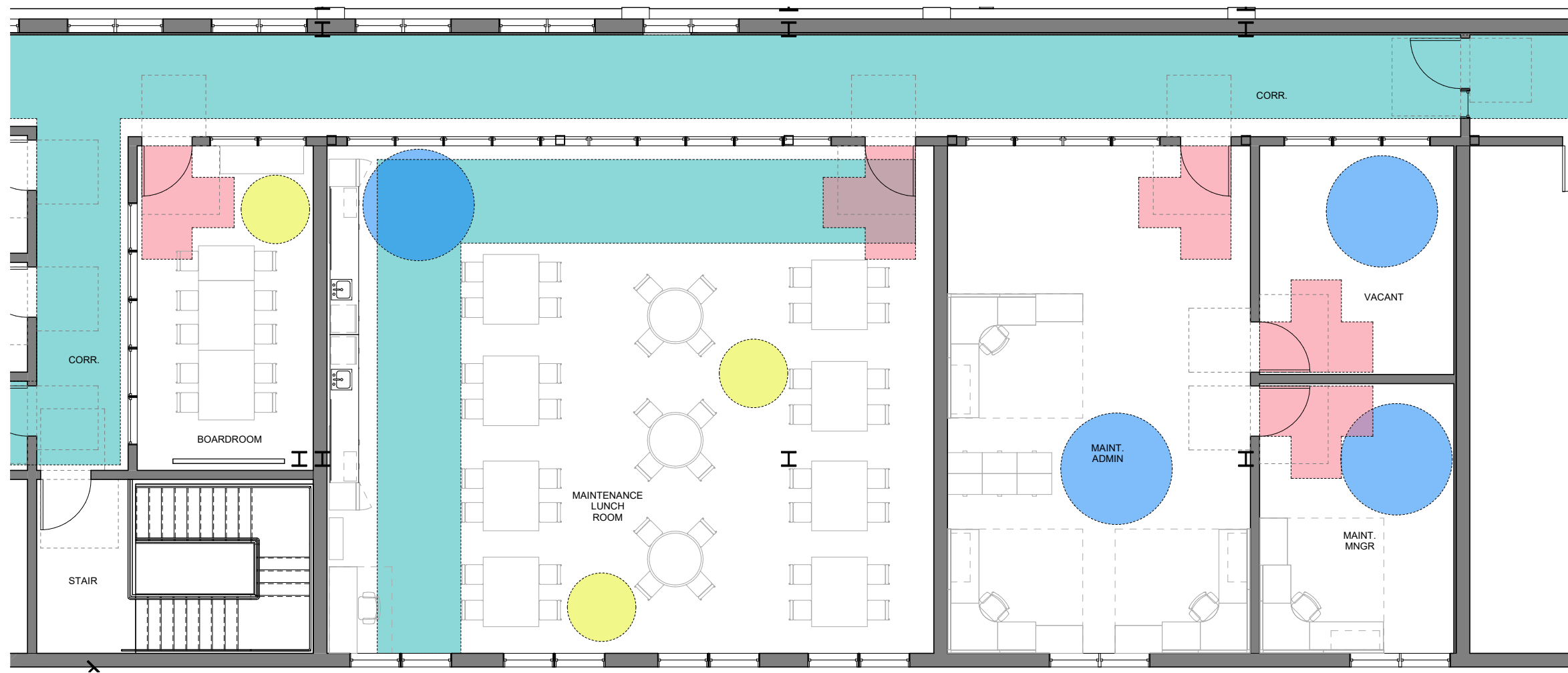
KEY PLAN:



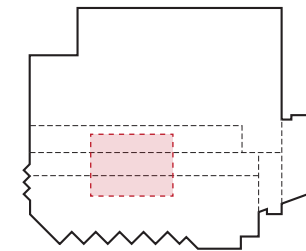
LEGEND:

- STAIRS
- ELEVATOR
- UNIVERSAL WASHROOM
- ACCESSIBLE STALL
- PRIMARY ACCESSIBLE ROUTE [BATS]
- SECONDARY ACCESSIBLE ROUTE [BATS]
- POWER DOOR BUTTON

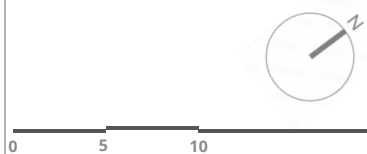
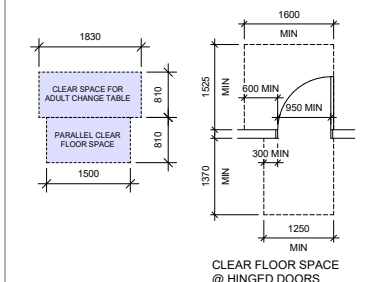
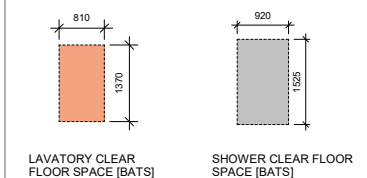
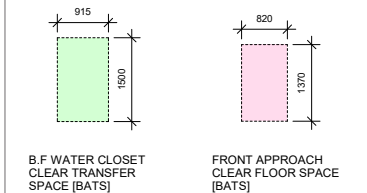
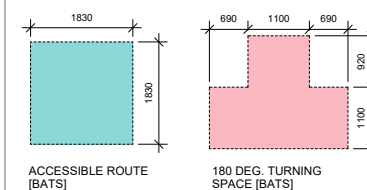
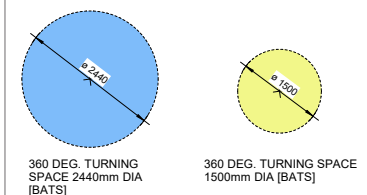


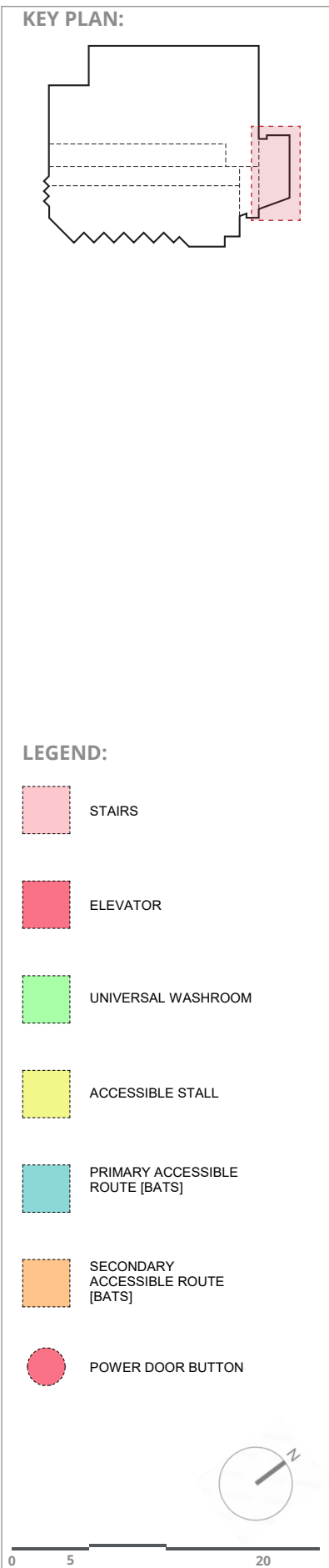
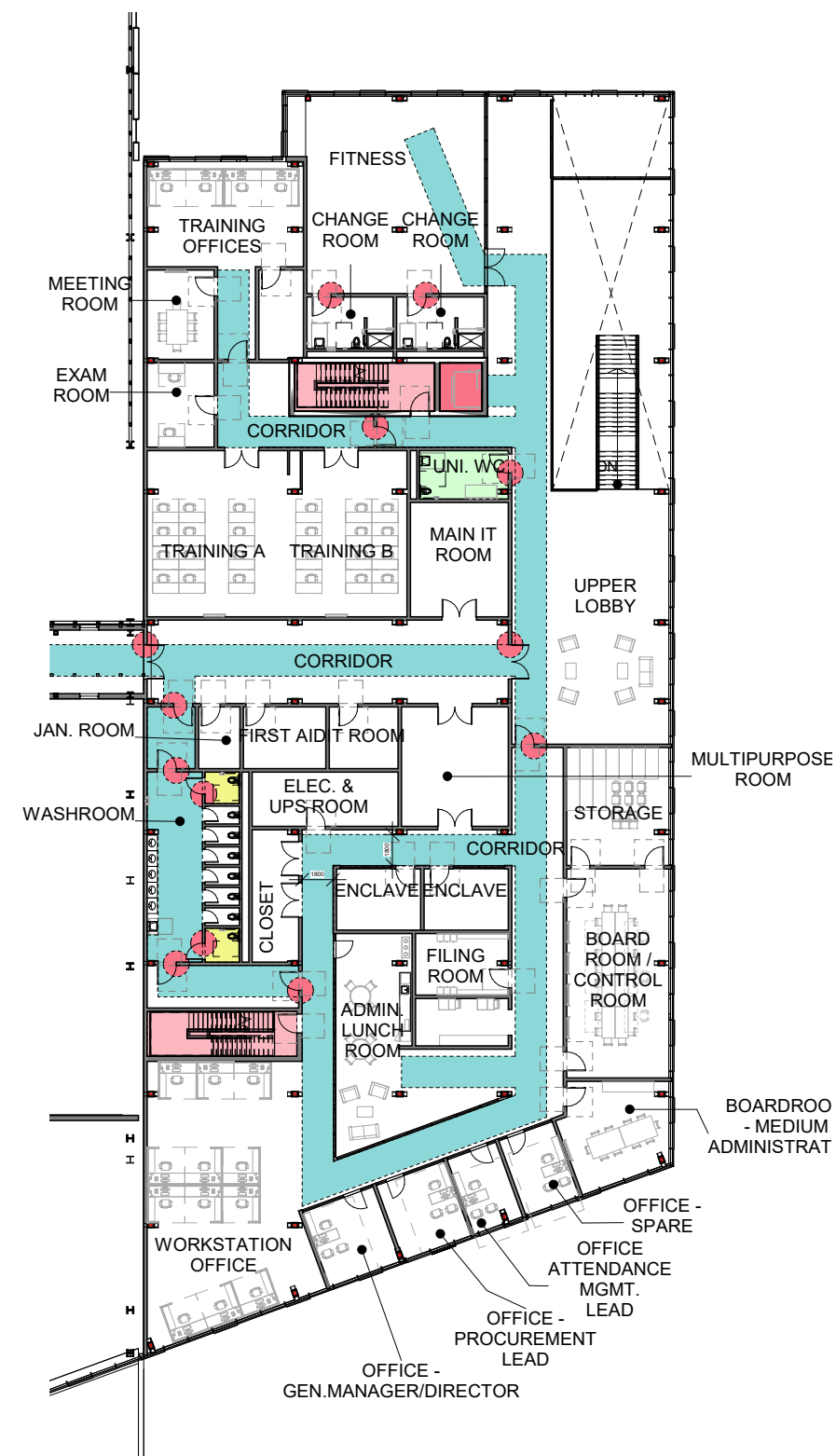
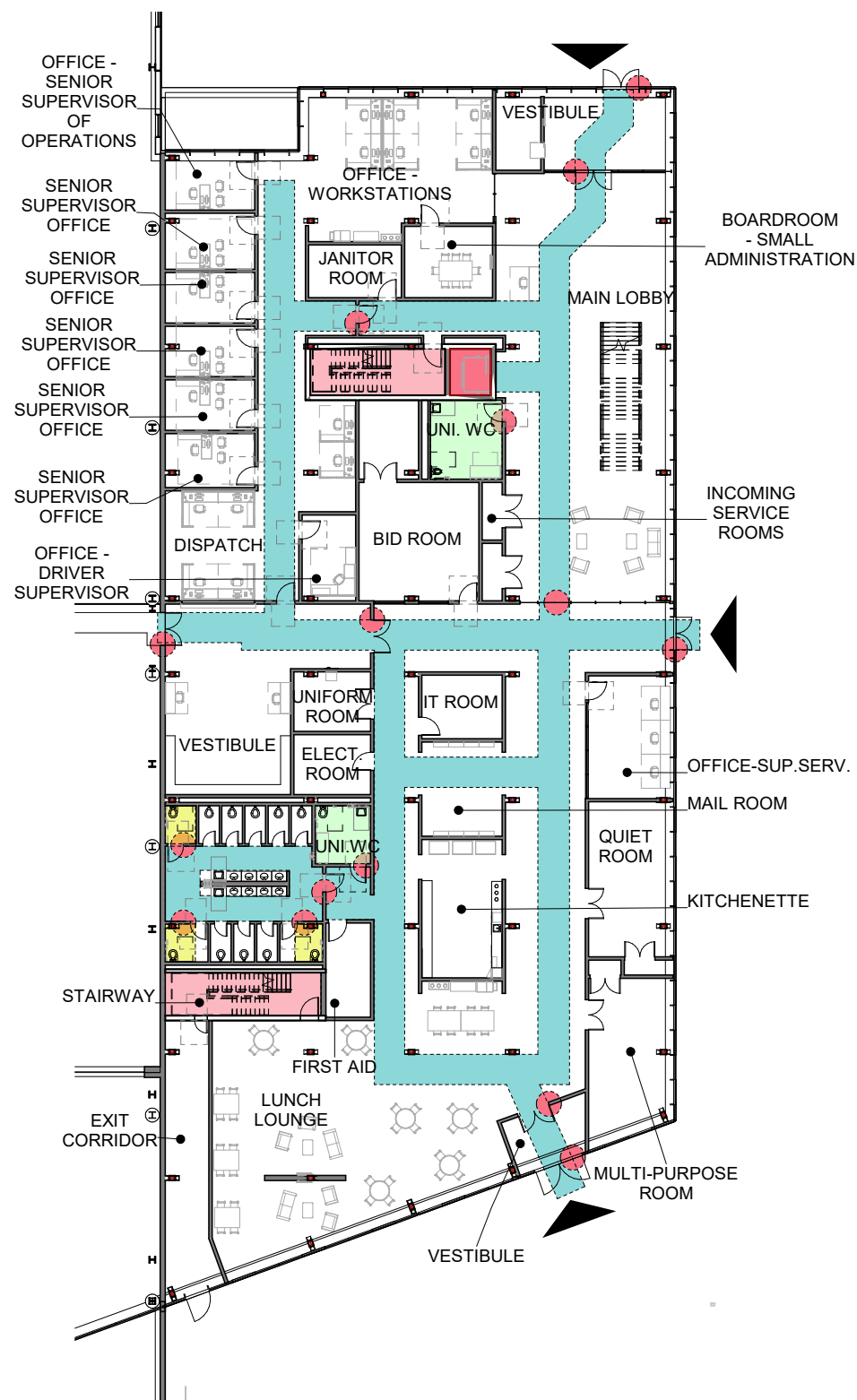


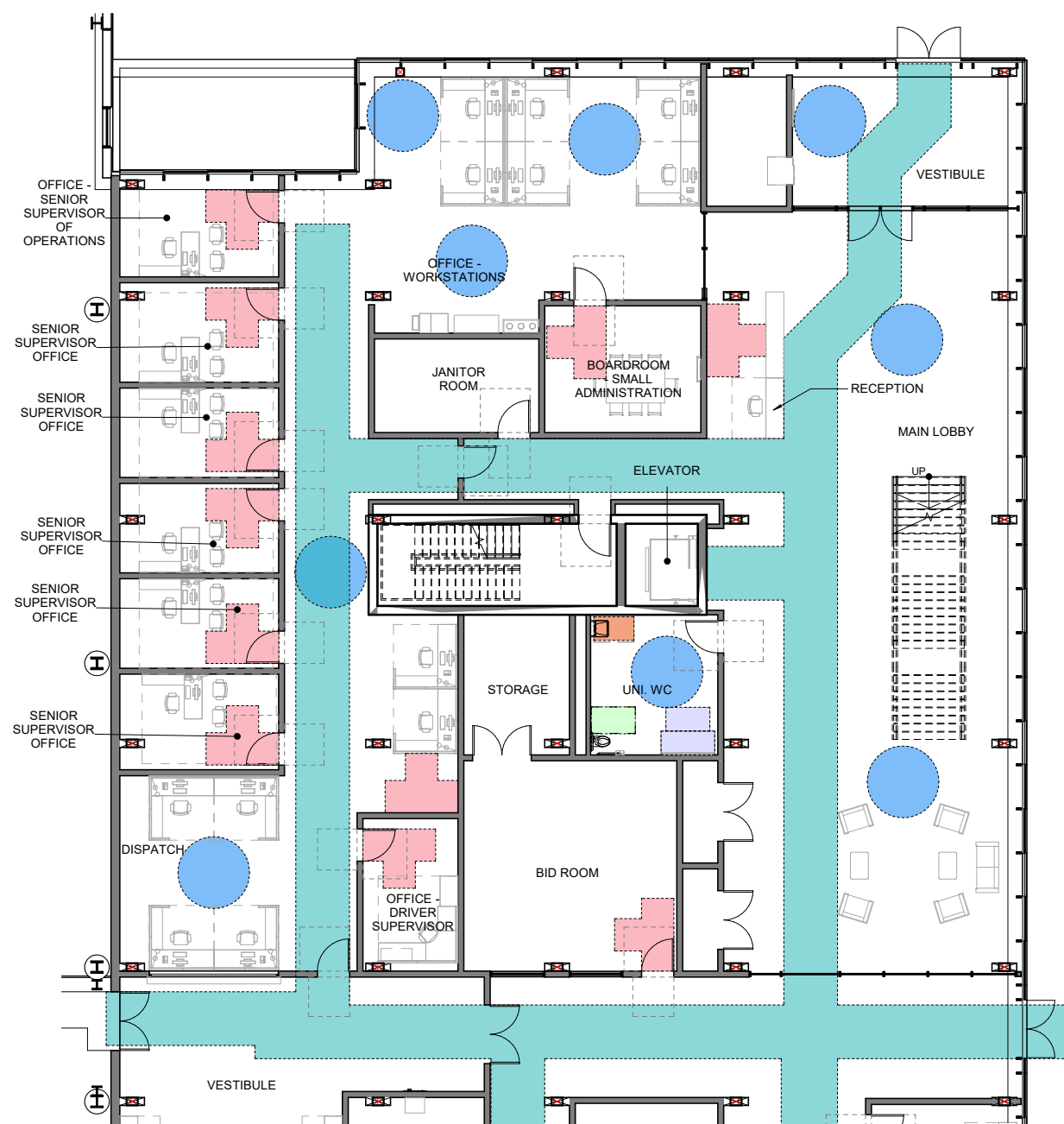
KEY PLAN:



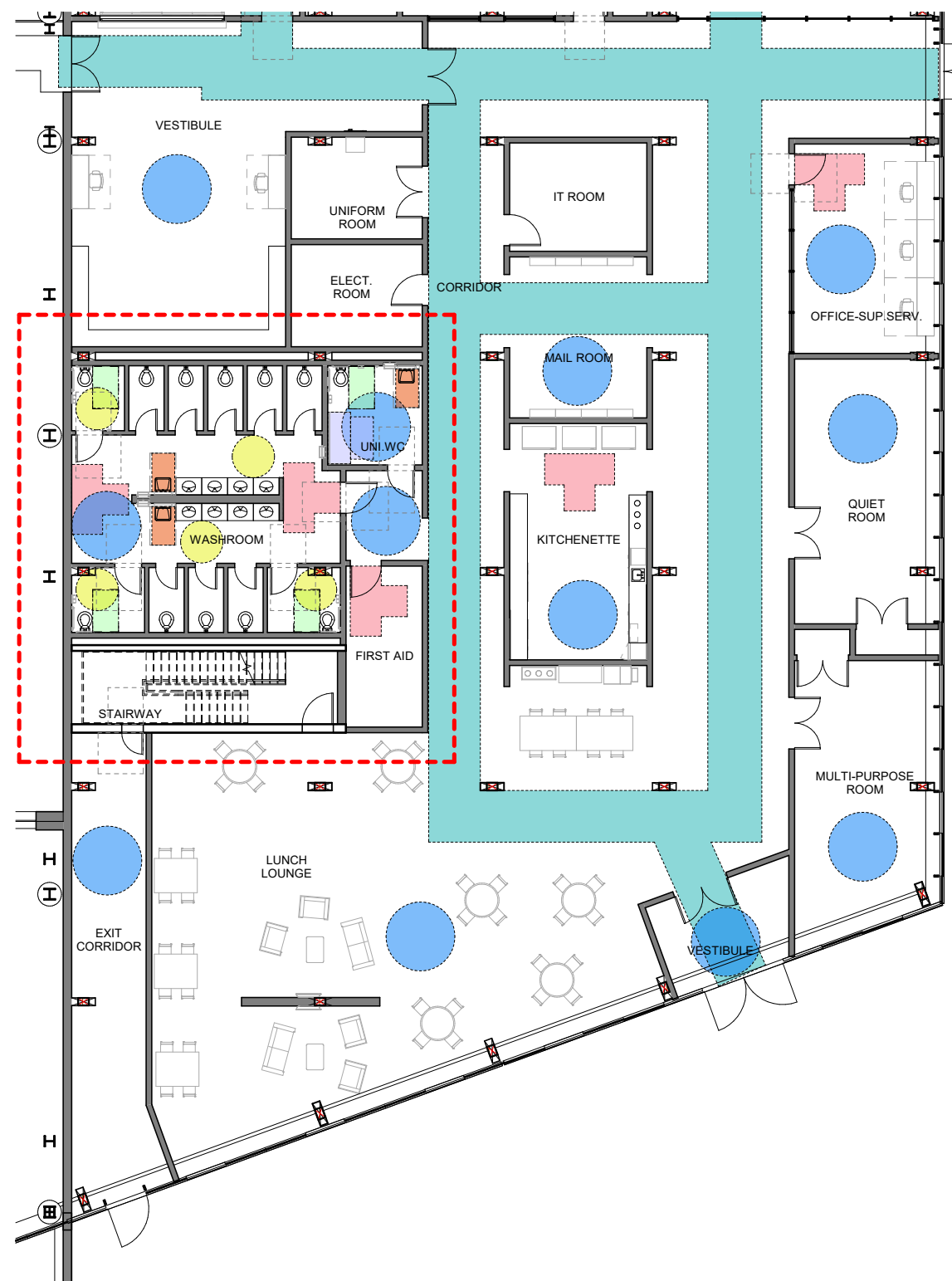
LEGEND:





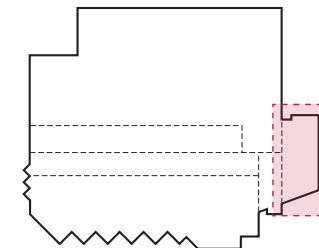


LEVEL 1 FLOOR PLAN (NORTH)

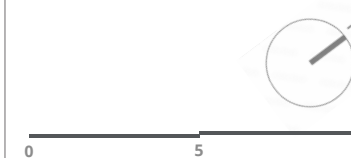
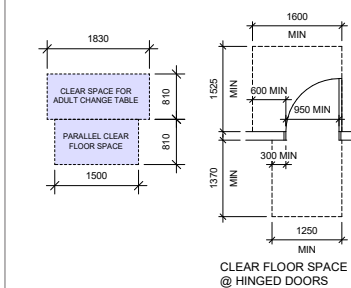
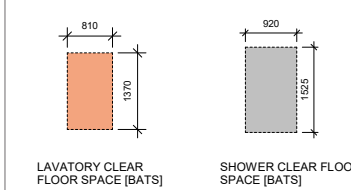
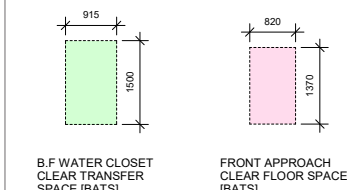
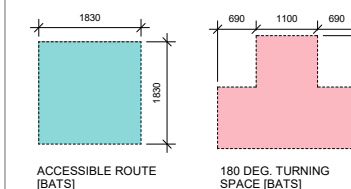
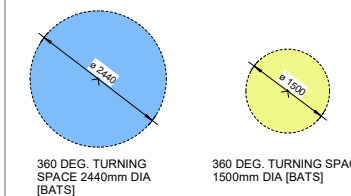


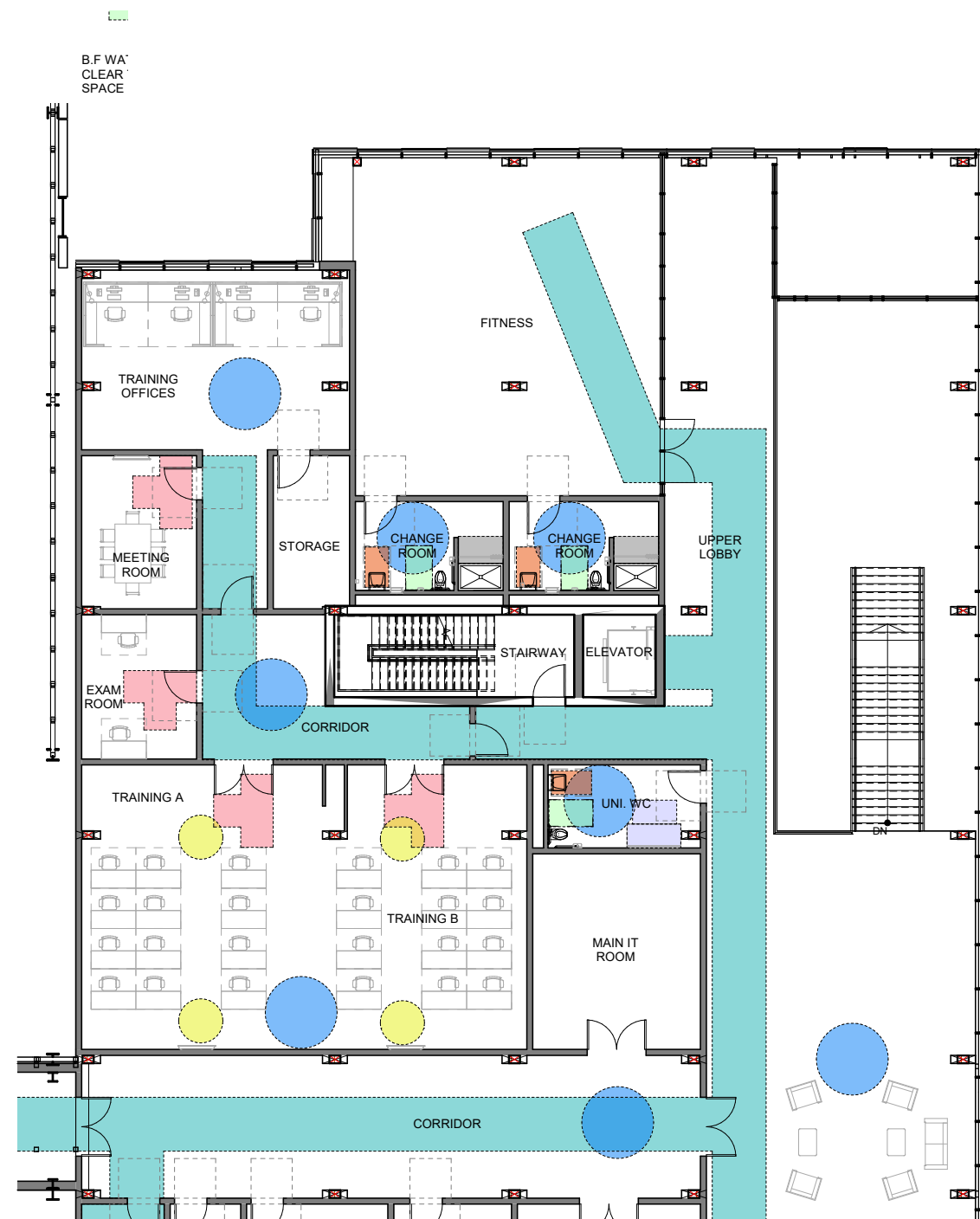
LEVEL 1 FLOOR PLAN (SOUTH)

KEY PLAN:

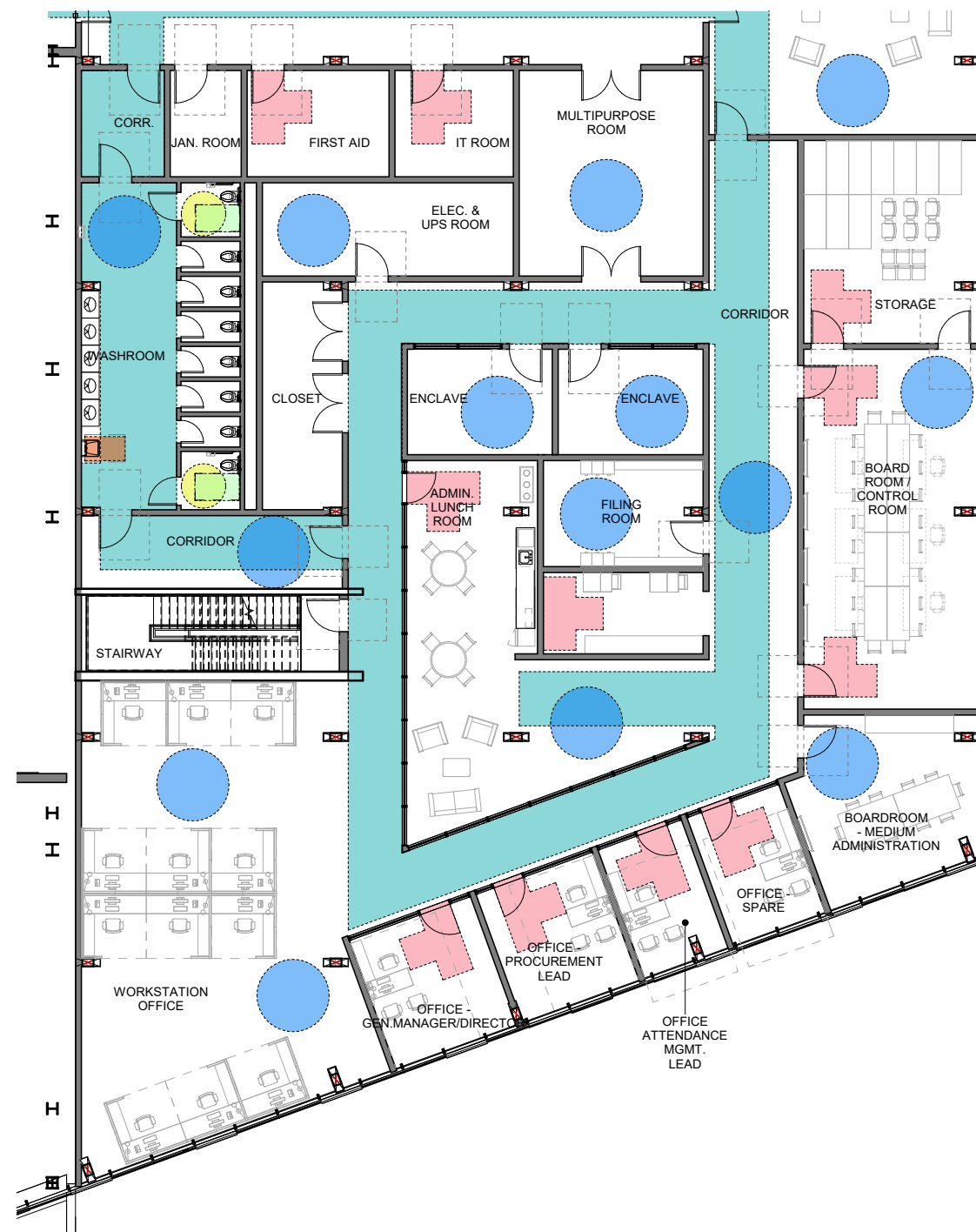


LEGEND:



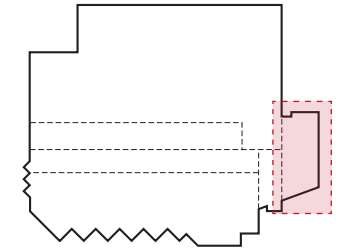


LEVEL 2 FLOOR PLAN (NORTH)

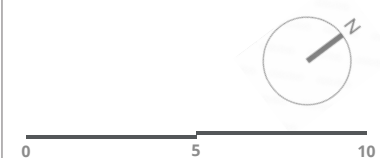
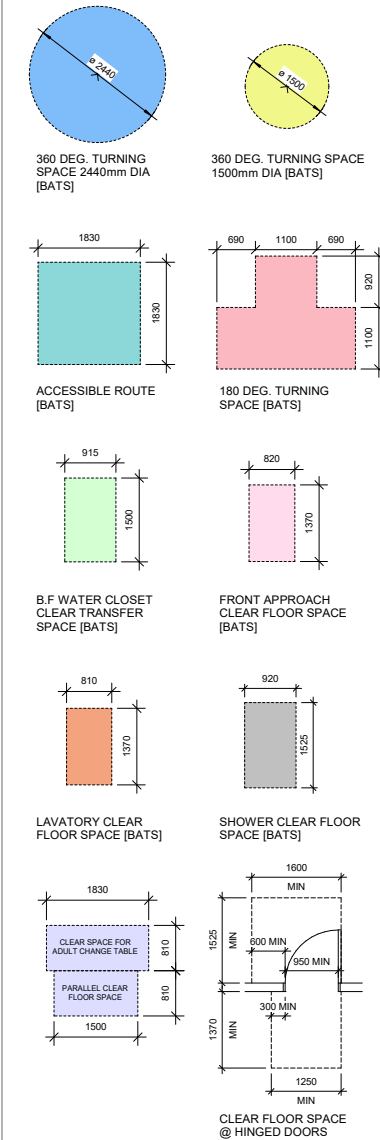


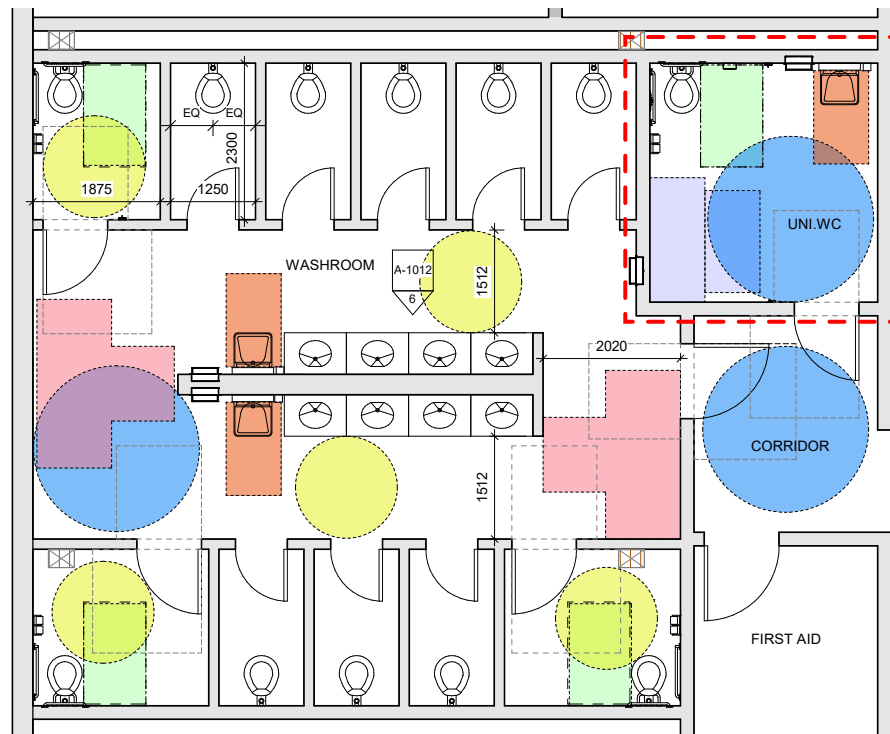
LEVEL 2 FLOOR PLAN (SOUTH)

KEY PLAN:

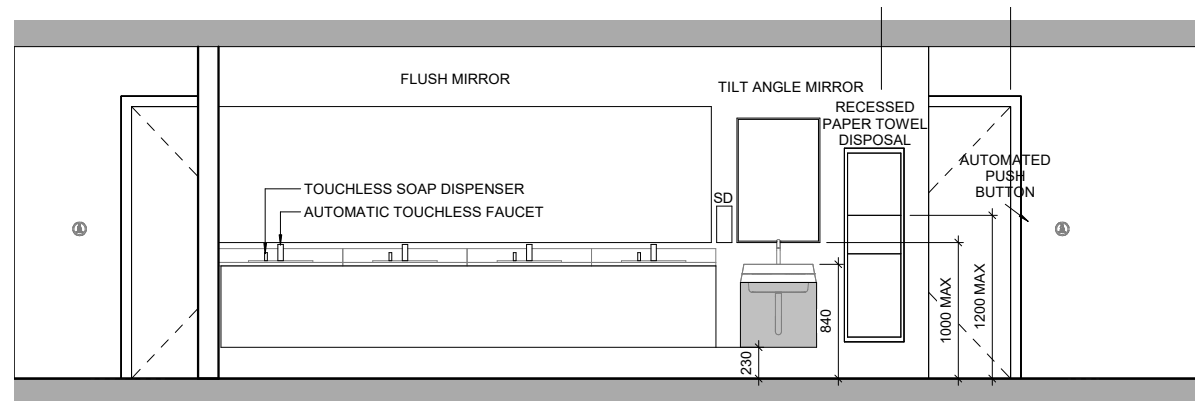


LEGEND:

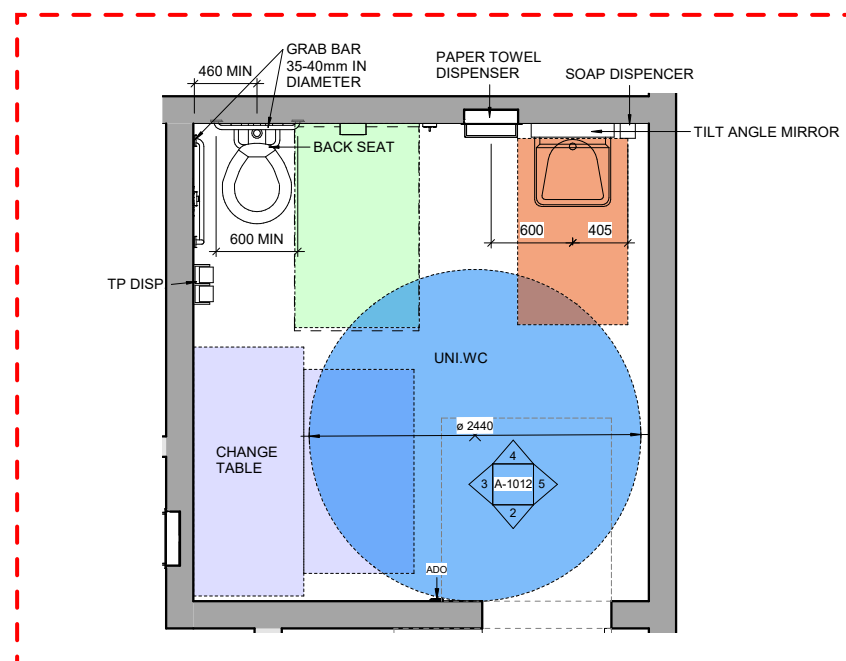




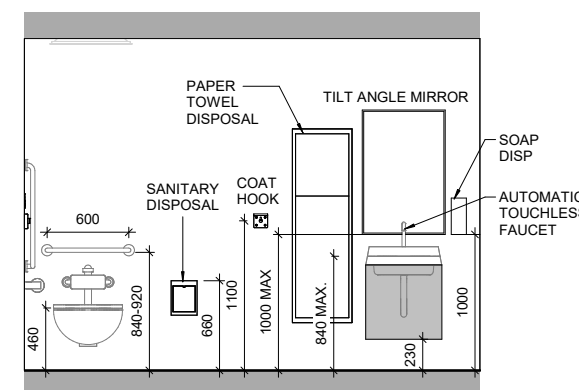
LEVEL 1 - A-420 - FLOOR PLAN (ADMIN)



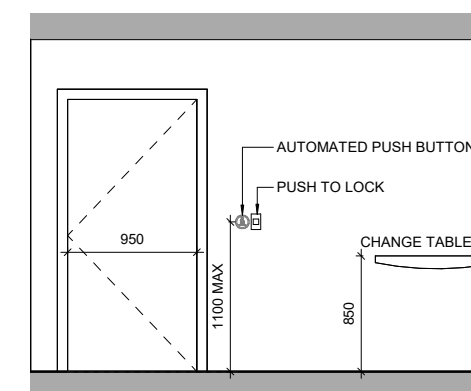
ELEVATION (A-420 - SOUTH)



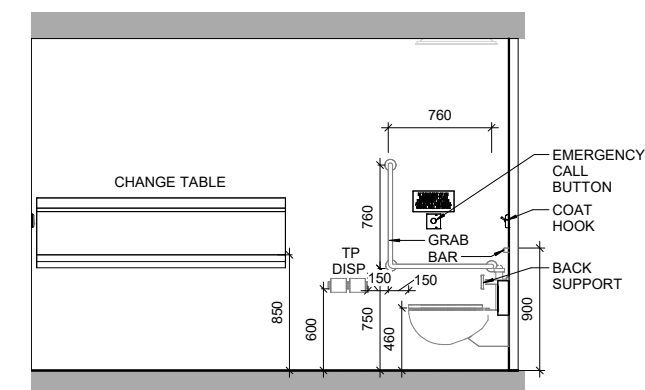
ENLARGED FLOOR PLAN - A-1023



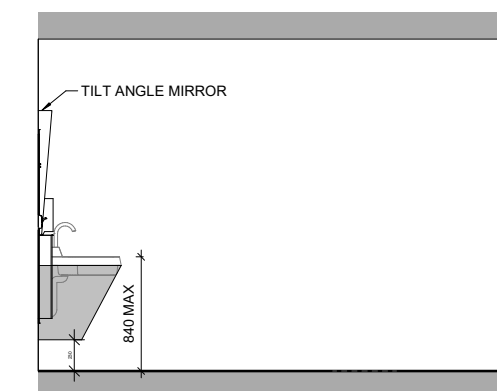
ELEVATION (A-1023 - N)



ELEVATION (A-1023 - S)



ELEVATION (A-1023 - W)

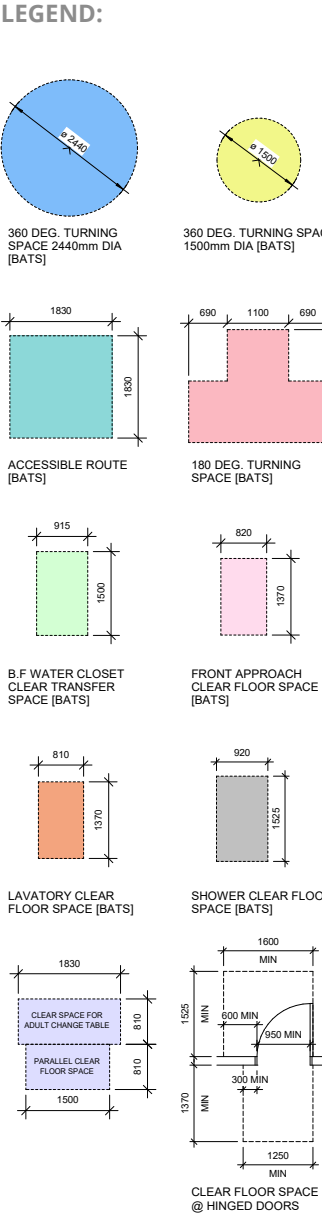
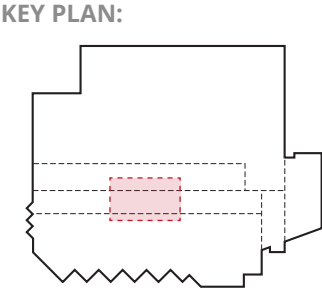
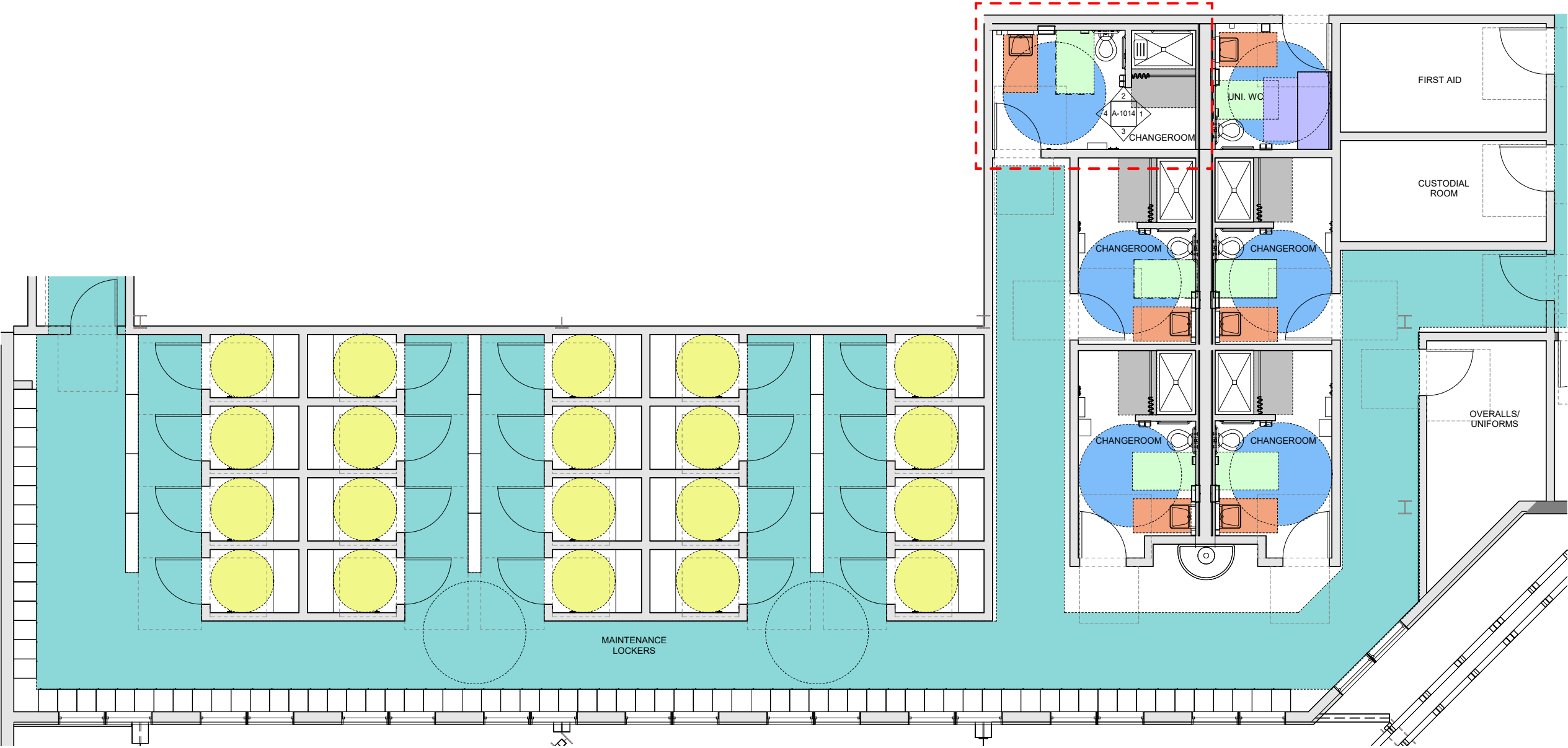


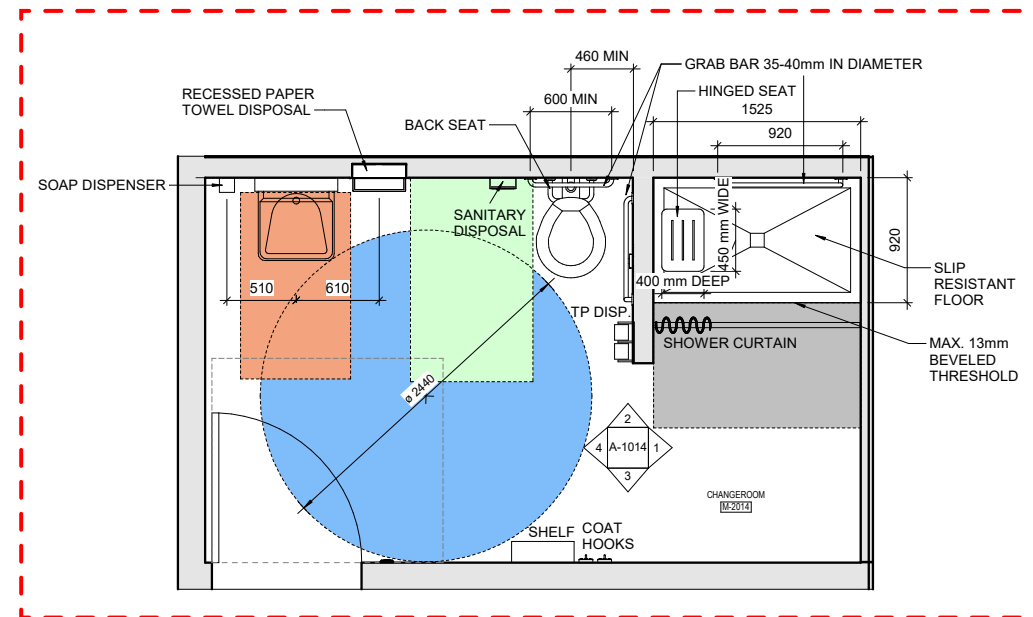
ELEVATION (A-1023 - E)

KEY PLAN:

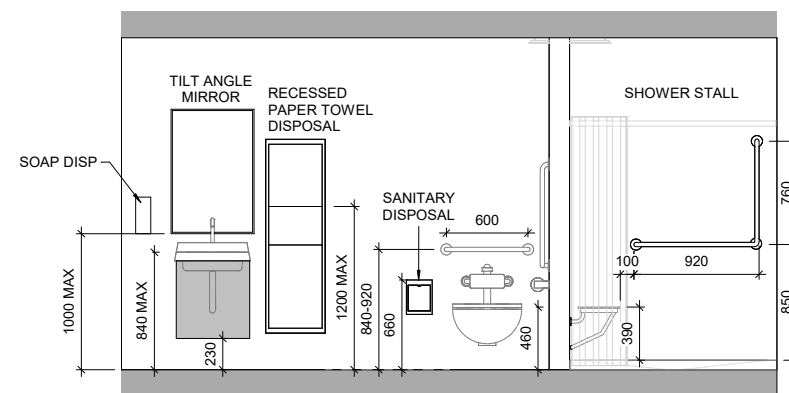
LEGEND:

- 360 DEG. TURNING SPACE 2440mm DIA [BATS]
- 360 DEG. TURNING SPACE 1500mm DIA [BATS]
- ACCESSIBLE ROUTE [BATS]
- 180 DEG. TURNING SPACE [BATS]
- B.F WATER CLOSET CLEAR TRANSFER SPACE [BATS]
- FRONT APPROACH CLEAR FLOOR SPACE [BATS]
- LAVATORY CLEAR FLOOR SPACE [BATS]
- SHOWER CLEAR FLOOR SPACE [BATS]
- CLEAR SPACE FOR ADULT CHANGE TABLE
- PARALLEL CLEAR FLOOR SPACE
- CLEAR FLOOR SPACE @ HINGED DOORS

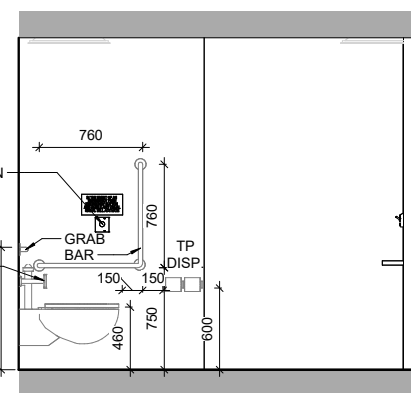




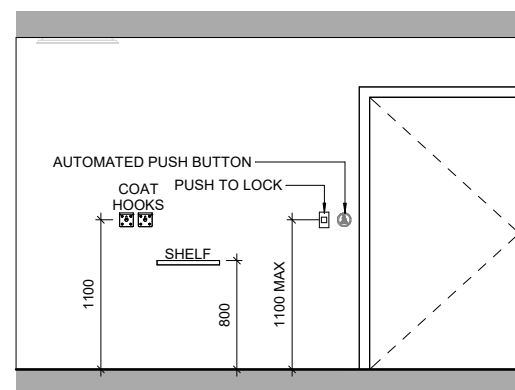
ENLARGED FLOOR PLAN - M-2014



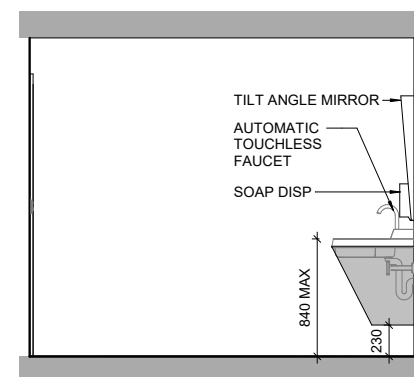
ELEVATION (M-2014 - N)



ELEVATION (M-2014 - E)

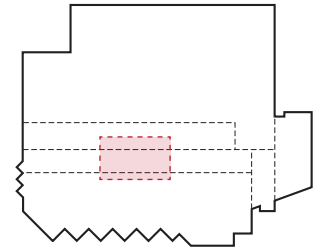


ELEVATION (M-2014 - S)

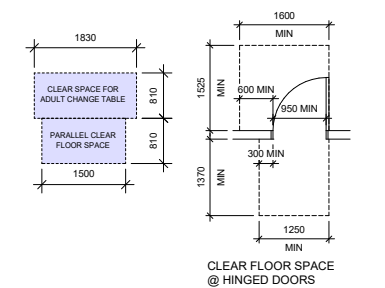
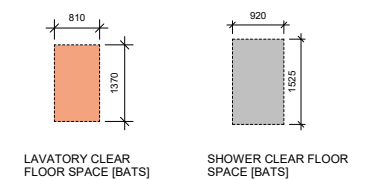
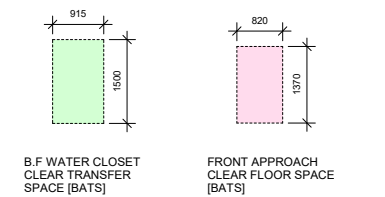
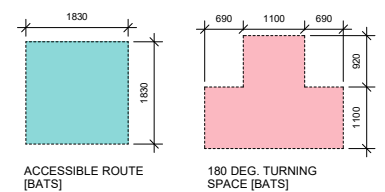
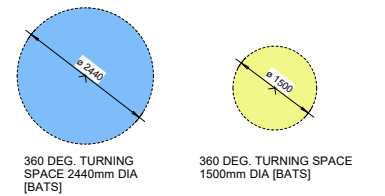


ELEVATION (M-2014 - W)

KEY PLAN:



LEGEND:



ARCHITECTURE | 49

wsp