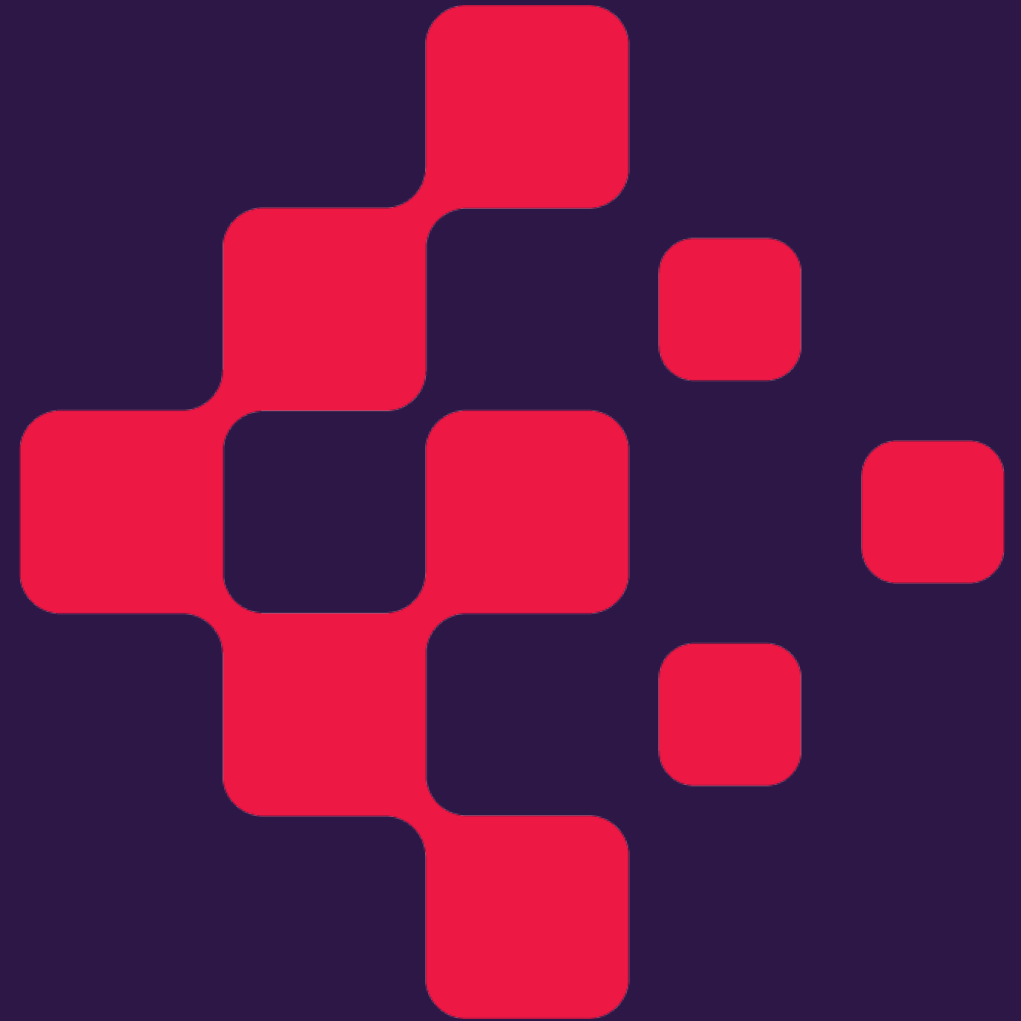


# Fero

Solutions without limits

## City of Brampton

### MedTech Advisory Committee Meeting



November 2023

# Manufacturing Capability and Capacity



[Click here for video](#)



# Available Manufacturing Capacity and Capability



## Quality/Certifications

- CSA A277
- CSA A660
- CWB W47.1
- QA/QC Management Program

## Facility/Operations

- Stoney Creek, Ontario
- 35 minutes to YYZ, 5 minutes to main highways
- 65 employees
- 300K sq ft of manufacturing space
- ERP systems implementation (use D365 base)

## Supply Chain Management

- Qualified vendors
- Target source >80% within 100 km
- Ability to provide flexibility by subcontracting engineering (electrical, mechanical)
- Use of subtrades to flex (drywall, plumbing)



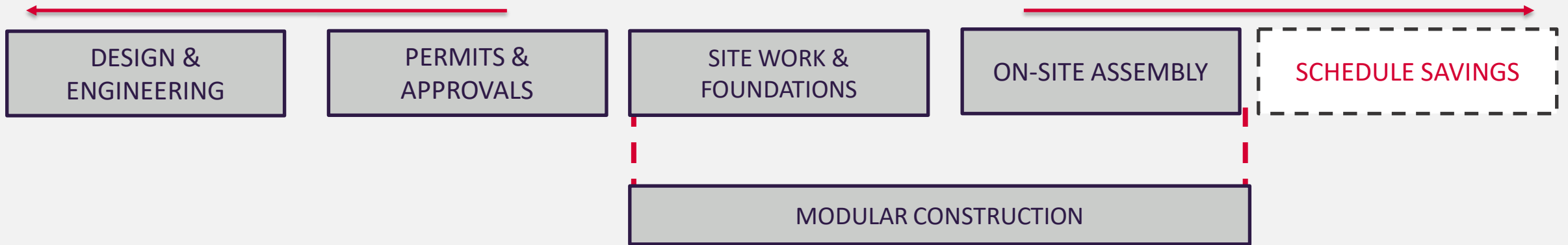
# What is Modular Construction?

- Modular construction is a process in which a building is constructed off-site, in controlled plant conditions, using the same materials and designing to the same codes and standards as conventionally built facilities – in about a third of the time
- Buildings are produced in “modules”
- When modules are assembled on site, the identical design intent and specifications of the most sophisticated site-built facility is reflected – without compromise
- Building in factory provides offsite contractors with the ability to have more robust QA/QC procedures, thereby significantly reducing deficiencies and warranty claims



# Why Modular?

## MODULAR CONSTRUCTION SCHEDULE



## CONVENTIONAL CONSTRUCTION SCHEDULE





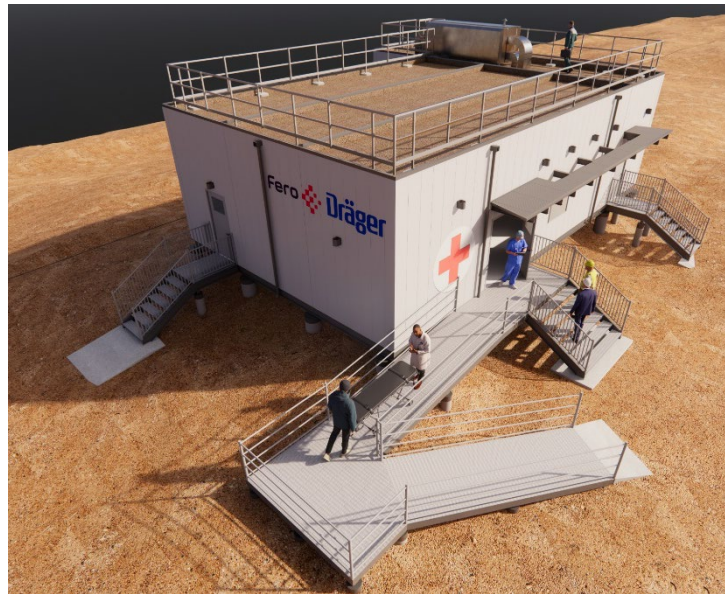
# Fero's Healthcare Solutions



Emergency Management



Wet Laboratories



Remote Medical Clinics



Hospital Facilities



# Case Study - Wet Laboratory

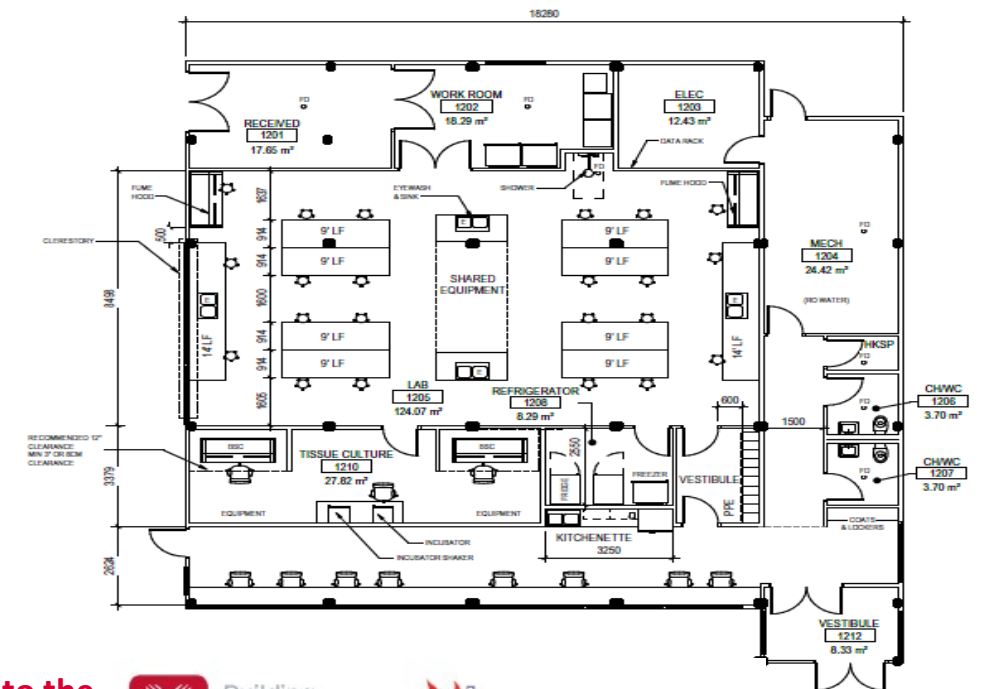
**Challenge:** Unprecedented growth in the Life Sciences Sector has resulted in wet lab space shortages, especially from University Research Parks. Many research parks are at 98% capacity of their existing laboratory space with long waiting list of potential tenants waiting for space

**Project Name:** Modular Convergence Lab

**Project Source:** Ontario Research Park

**Solution:** Fero's laboratory solution will bridge the gap until a larger facility is built by delivering a 3,600 sq ft volumetric modular facility, in approximately 8 months

This facility will be adjacent to an existing building and will aesthetically integrate with the Park's architecture



Connected to the ecosystem



Building Communities of Innovation™



SUSTAINABLE LABS CANADA  
LABS ÉCOLOGIQUE DU CANADA







QUESTIONS?

**Sabrina Fiorellino**

Chief Executive Officer

T 416-891-9001

E [sfiorellino@ferointl.com](mailto:sfiorellino@ferointl.com)